

# WASHINGTON DRIVE EXECUTIVE CENTER



| 3459 Washington Drive, Eagan MN 55122 |

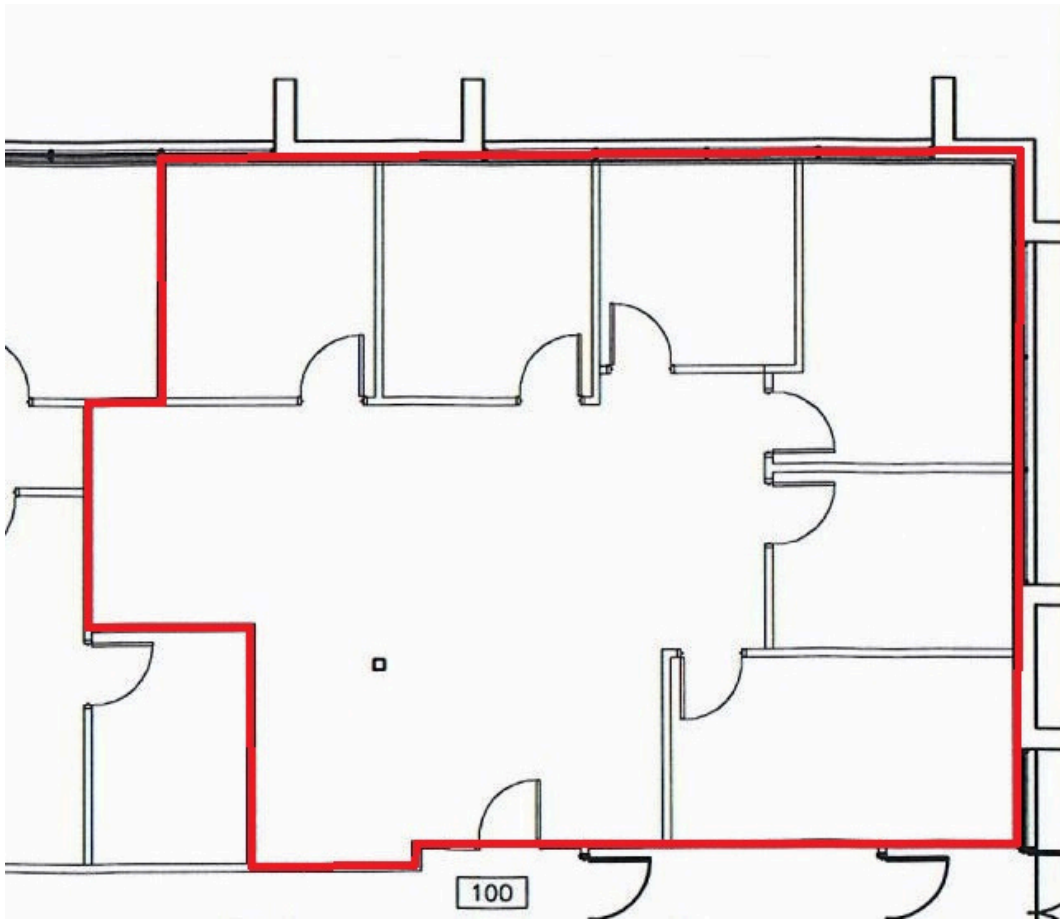
*Outstanding Leasing Value*

**PRICING**  
\$9.75 psf Office

## Property Features

- Available SF: 1,690 sf
- Available Now
- Access to Hwy 35E & I-494
- Monument Signage Available
- Professional, Corporate Image
- Close to MSP Airport
- Abundant Parking (4/1,000)
- \$10.88 psf CAM and Tax (2026)
- Many area Restaurants and amenities





---

## Property Features

- High quality office finish with multiple private offices at the building entrance
- Quiet, professional building with local hands on ownership
- Landlord willing to demo or build out for a term lease
- Total building square footage: 24,194 SF

---

[www.cornerstone-mn.com](http://www.cornerstone-mn.com)

Jack Battenhoff | (612) - 723 - 5408  
jack@cornerstone-mn.com

Luke Battenhoff | (612) - 723 - 2537  
luke@cornerstone-mn.com