

SINGLE TENANT ABSOLUTE NNN

Investment Opportunity



Brand New 20-Year Lease | Annual 2.5% Rental Increases



1002 E. Madison Street

HOUSTON MISSISSIPPI

ACTUALSITE



BRITT RAYMOND

**SVP & Managing Principal
National Net Lease**

britt.raymond@srsre.com
D: 929.229.2614 | M: 704.517.4712
340 Madison Avenue, Suite 3E
New York, NY 10173
NY License No. 10491212709

KYLE FANT

**SVP & Managing Principal
National Net Lease**

kyle.fant@srsre.com
M: 973.632.1386
340 Madison Avenue, Suite 3E
New York, NY 10173
NY License No. 10401281546

MARTIN SMITH

**Principal Broker
SRS Real Estate, LLC**

martin.smith@srsre.com
205.259.2195
304 20th Street South
Birmingham, AL 35233
MS License No. 21705 | SRS License No. 22099





6

INVESTMENT SUMMARY

Offering Summary
Investment Highlights

10

PROPERTY OVERVIEW

Aerials
Site Plan
Location Map

15

AREA OVERVIEW

Demographics

17

FINANCIALS

Rent Roll
Pricing Summary
Brand Profile

SITE OVERVIEW



PROPERTY PHOTO





SRS Real Estate Partners, LLC is pleased to present the opportunity to acquire the fee simple interest (land & building ownership) in an absolute NNN leased healthcare investment located in Houston, Mississippi. The tenant, Progressive Health of Houston, LLC, recently signed a brand-new 20-year lease with two (2) additional 5-year renewal options, demonstrating their long-term commitment to the property. The lease features 2.5% annual rental increases throughout the primary term and renewal periods, offering consistent NOI growth and a built-in hedge against inflation. The lease is structured as absolute NNN, with zero landlord responsibilities, making this an ideal, management-free investment opportunity for passive or out-of-state investors.

Strategically located on E Madison St (9,600 VPD), the primary thoroughfare serving Houston and the broader region, the property benefits from excellent visibility and accessibility. The facility operates as a designated Rural Emergency Hospital (REH), delivering critical emergency care services in a medically underserved market. With no competing hospitals within a 25-mile radius, this property fulfills a vital healthcare need and reinforces long-term tenant viability.

PROPERTY PHOTOS



OFFERING SUMMARY



OFFERING

Price	\$9,225,000
Net Operating Income	\$738,000
Cap Rate	8.00%
Guarantor	Progressive Medical Enterprise LLC
Tenant	Progressive Health of Houston, LLC
Lease Type	Absolute NNN
Landlord Responsibilities	None
Financial Reporting	Yes (Contact Agent For Details)
ROFO/ROFR	No

PROPERTY SPECIFICATIONS

Rentable Area	123,240 SF
Land Area	7.24 Acres
Property Address	1002 E. Madison Street Houston, Mississippi 38851
Year Built	1968
Parcel Number	1-102C-04-012.00
Ownership	Fee Simple (Land & Building Ownership)

Brand New 20-Year Lease | Annual 2.5% Rental Increases

- The tenant, Progressive Health of Houston, LLC, recently executed a brand-new 20-year lease with two (2) additional 5-year renewal options, providing long-term income and demonstrating strong commitment to the location
- Scheduled 2.5% annual rental increases drive consistent NOI growth and offer a built-in hedge against inflation

Absolute NNN | Zero Landlord Responsibilities

- Tenant pays for CAM, taxes, insurance and maintains the premises
- No landlord responsibilities
- Ideal, management-free investment for an out-of-state, passive investor

Excellent Accessibility On E Madison St (9,600 VPD)

- The property benefits from strong visibility and accessibility along E Madison St (9,600 VPD), the primary thoroughfare serving Houston, Mississippi, and the surrounding region

Rural Healthcare Destination

- Operating as a Rural Emergency Hospital (REH), the facility delivers essential healthcare services to an underserved market
- With no other hospitals within 25 miles, this facility fulfills a critical need for essential local access to emergency medical care



LOCATION



Houston, Mississippi
Chickasaw County

ACCESS



E. Madison Street/State Highway 8: 2 Access Points

TRAFFIC COUNTS



E. Madison Street/State Highway 8: 9,600 VPD
Houston Bypass/State Highway 15: 3,900 VPD

IMPROVEMENTS



There is approximately 123,240 SF of existing building area

PARKING



There are approximately 96 parking spaces on the owned parcel.
The parking ratio is approximately 0.78 stalls per 1,000 SF of leasable area.

PARCEL



Parcel Number: 1-102C-04-012.00
Acres: 7.24
Square Feet: 315,374

CONSTRUCTION



Year Built: 1968

ZONING



C-3: Highway Commercial



Houston Municipal Airport

Chickasaw County Justice Court

Houston Lower Elementary

DOLLAR TREE

Walmart

Sprint Mart

Checkers

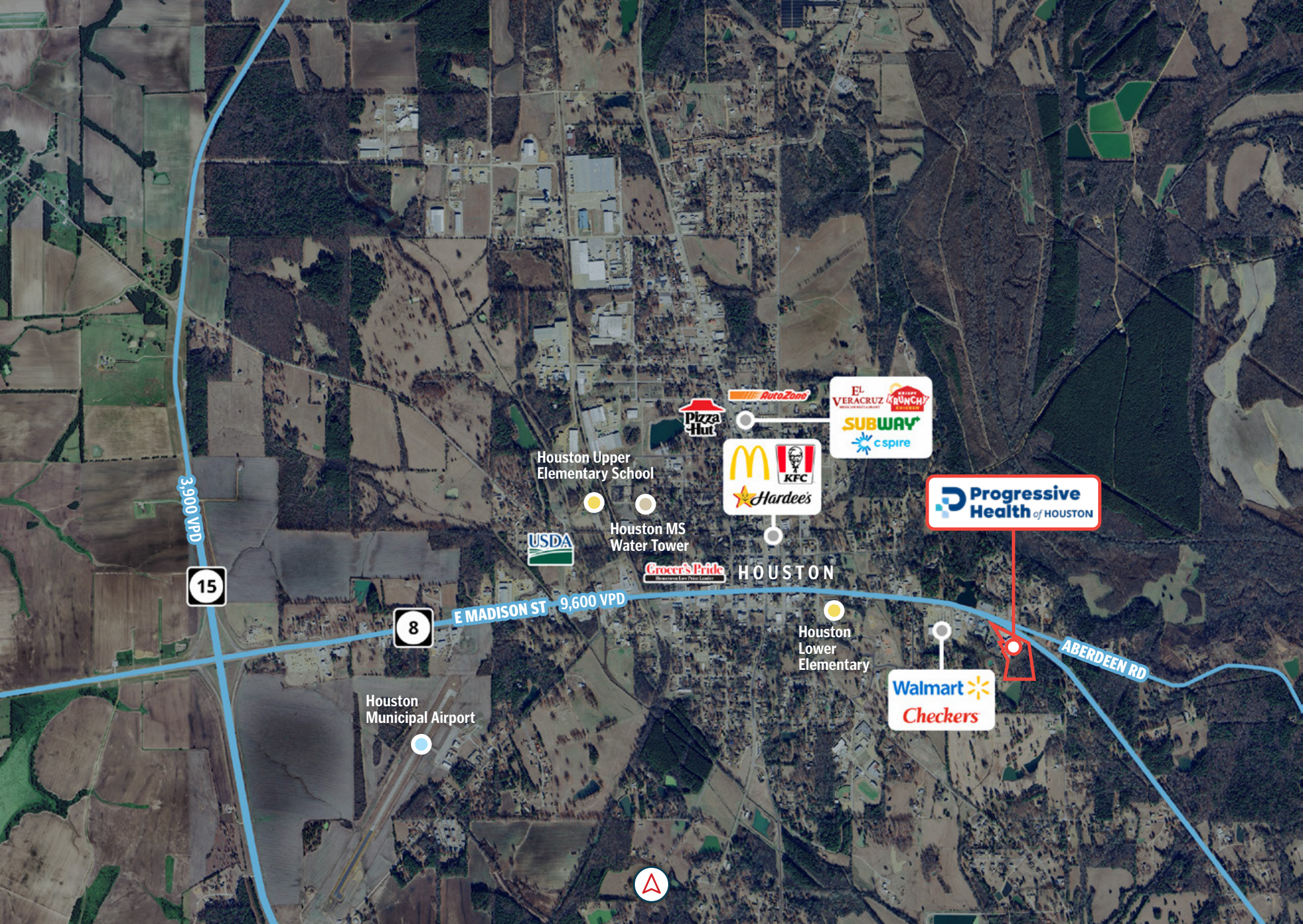
HOLIDAY TERRACE MOTEL

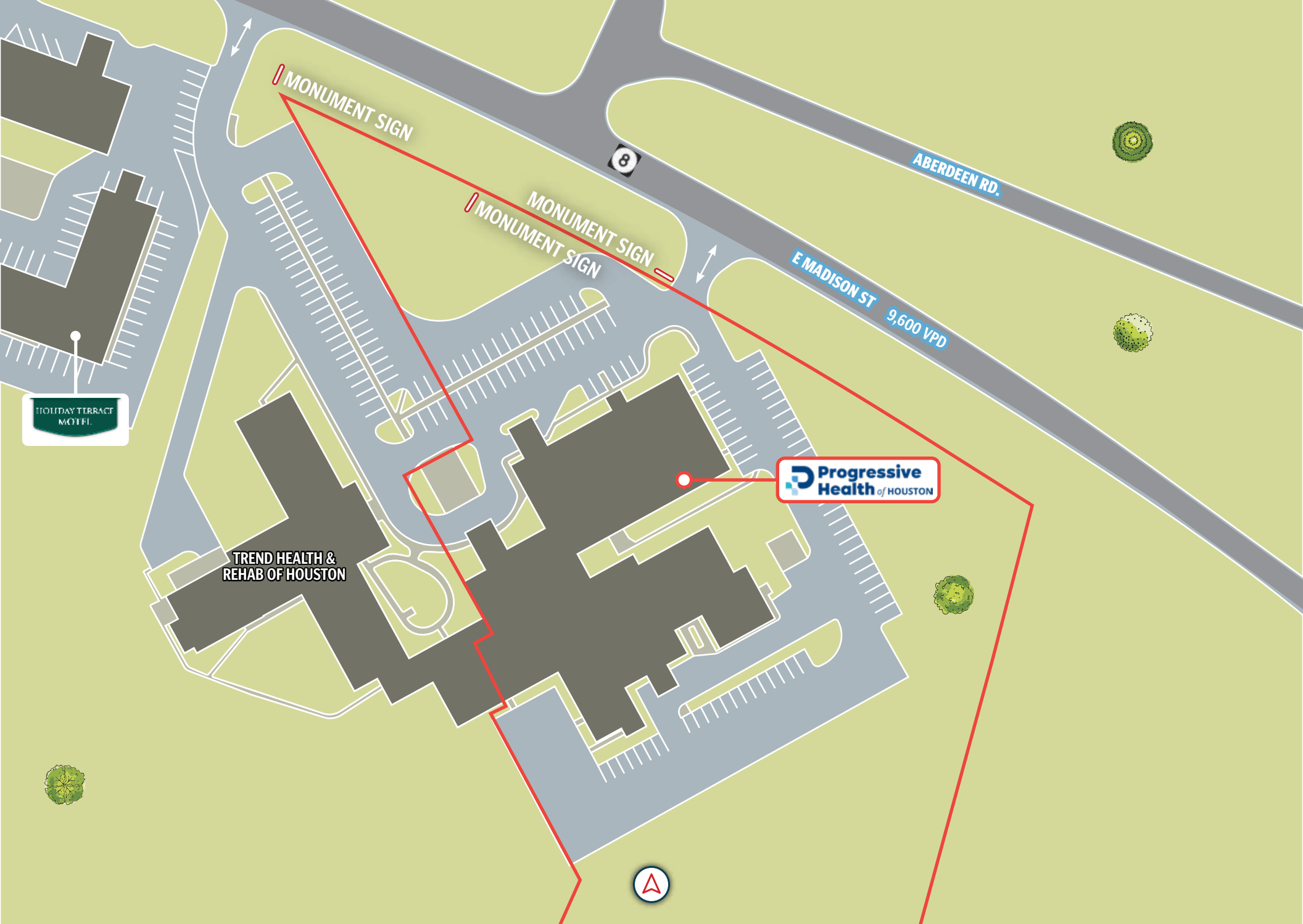
TREND HEALTH & REHAB OF HOUSTON

Progressive Health of HOUSTON

E MADISON ST 9,600 VPD

ABERDEEN RD





HOLIDAY TERRACE
MOTEL

TREND HEALTH &
REHAB OF HOUSTON

Progressive
Health of HOUSTON

MONUMENT SIGN

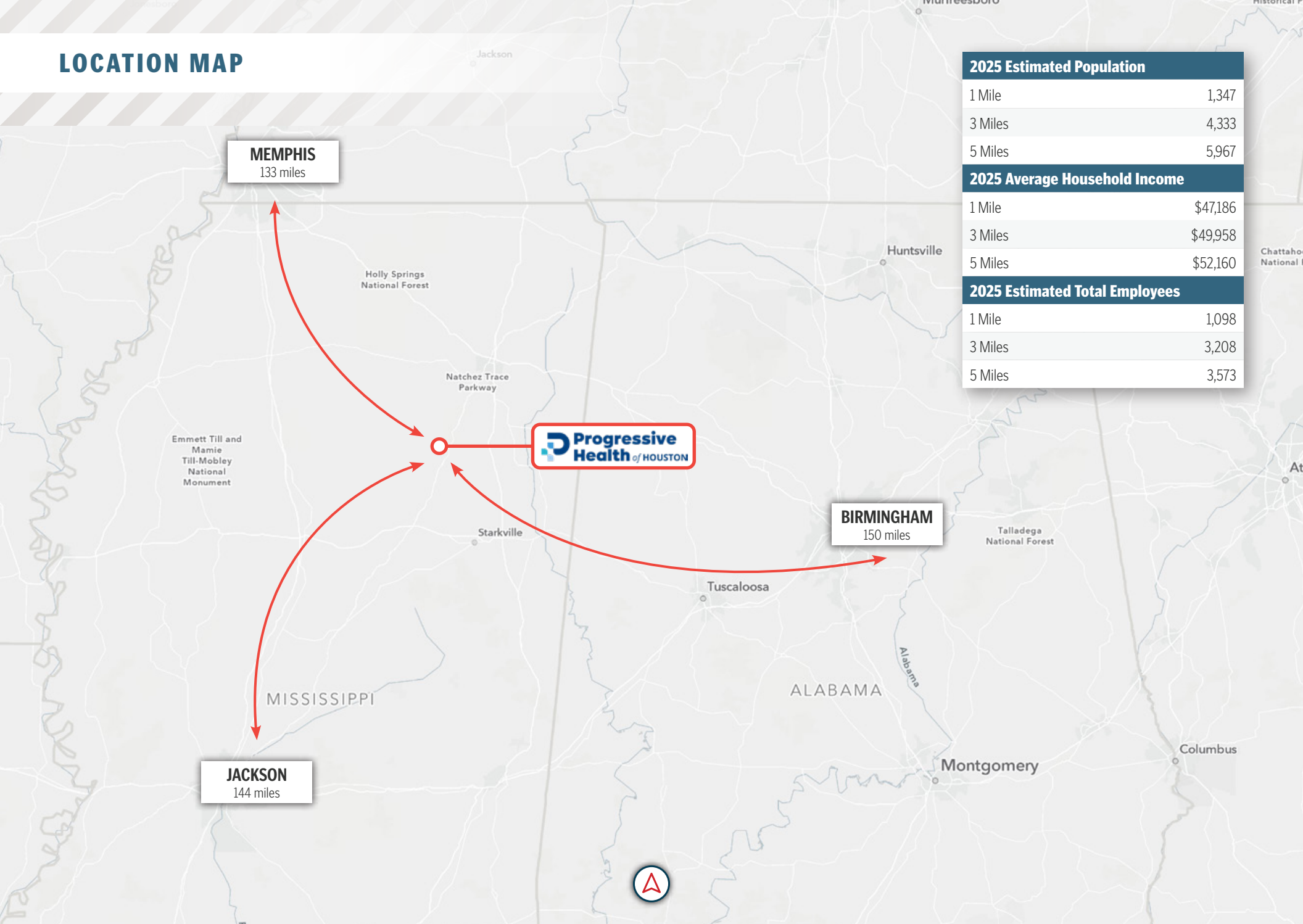
MONUMENT SIGN

ABERDEEN RD.

E MADISON ST
9,600 VPD



LOCATION MAP



MEMPHIS
133 miles

BIRMINGHAM
150 miles

JACKSON
144 miles



2025 Estimated Population	
1 Mile	1,347
3 Miles	4,333
5 Miles	5,967
2025 Average Household Income	
1 Mile	\$47,186
3 Miles	\$49,958
5 Miles	\$52,160
2025 Estimated Total Employees	
1 Mile	1,098
3 Miles	3,208
5 Miles	3,573



HOUSTON, MISSISSIPPI

Houston is located in Chickasaw County, Mississippi, United States, and is designated as a Main Street Community. It is one of two county seats in Chickasaw County and has a 2025 population of 3,661.

The local economy is supported by agriculture, manufacturing, forestry, education, and healthcare. The region has traditionally relied on farming, particularly poultry, soybeans, and timber, as key economic drivers. Manufacturing has steadily grown, with several small to mid-sized plants operating in or near the city, including food processing and wood product facilities. Healthcare services are provided by Trace Regional Hospital and various clinics, which also contribute to local employment. Houston is part of the broader Three Rivers Planning and Development District, which supports workforce development and regional investment initiatives.

Nearby attractions include the Chickasaw Heritage Museum, local parks such as Joe Brigance Park and Bray Creek Walking Trail, and the historic downtown area. The Rails to Trails–Tanglefoot Trail is a 10-foot-wide nature trail that stretches 44 miles along the old GM&O Railroad from Houston to New Albany, offering opportunities for biking, jogging, walking, and enjoying the rural Mississippi outdoors. Adjacent to City Hall is Houston Garden Park, planned and planted by Master Gardeners. The city also hosts the Mississippi Flywheel Festival twice a year, taking place every April and September.

Houston is served by the Chickasaw County School District, with Houston High School as the community's primary high school. The Houston and former Chickasaw County school districts were consolidated into a single district on July 1, 2021. Houston Public Schools is also home to 11-time National Dell-Winston Solar Car Challenge champions.

The nearest major airport is Tupelo Regional Airport, located 32 miles from the center of Houston, MS, and offering domestic flights out of Tupelo, Mississippi.

AREA DEMOGRAPHICS

	1 Mile	3 Miles	5 Miles
Population			
2025 Estimated Population	1,347	4,333	5,967
2030 Projected Population	1,318	4,243	5,864
2010 Census Population	1,352	4,169	5,788
Projected Annual Growth 2025 to 2030	-0.43%	-0.42%	-0.35%
Historical Annual Growth 2010 to 2020	0.50%	0.99%	0.89%
Households & Growth			
2025 Estimated Households	551	1,804	2,357
2030 Projected Households	553	1,811	2,373
2010 Census Households	527	1,650	2,158
Projected Annual Growth 2025 to 2030	0.07%	0.08%	0.14%
Historical Annual Growth 2010 to 2020	0.50%	0.90%	0.80%
Race & Ethnicity			
2025 Estimated White	55.32%	54.56%	57.11%
2025 Estimated Black or African American	38.53%	39.23%	37.15%
2025 Estimated Asian or Pacific Islander	0.37%	0.30%	0.32%
2025 Estimated American Indian or Native Alaskan	0.30%	0.28%	0.25%
2025 Estimated Other Races	4.90%	4.98%	4.52%
2025 Estimated Hispanic	7.13%	7.20%	6.54%
Income			
2025 Estimated Average Household Income	\$47,186	\$49,958	\$52,160
2025 Estimated Median Household Income	\$39,567	\$41,216	\$42,482
2025 Estimated Per Capita Income	\$19,456	\$20,264	\$20,793
Businesses & Employees			
2025 Estimated Total Businesses	133	251	274
2025 Estimated Total Employees	1,098	3,208	3,573



Tenant Name	LEASE TERM			RENTAL RATES							
	Square Feet	Lease Start	Lease End	Begin	Increase	Monthly	PSF	Annually	PSF	Recovery Type	Options
Progressive Health of Houston, LLC	123,240	10/9/2024	11/30/2044	Current	2.5%	\$61,500	\$0.50	\$738,000	\$5.99	Absolute NNN	2 (5-Year)
				11/1/2026	2.5%	\$63,038	\$0.51	\$756,450	\$6.14		

2.5% Annual increases thereafter

FINANCIAL INFORMATION

Price	\$9,225,000
Net Operating Income	\$738,000
Cap Rate	8.00%
Lease Type	Absolute NNN

PROPERTY SPECIFICATIONS

Year Built	1968
Rentable Area	123,240 SF
Land Area	7.24 Acres
Address	1002 E. Madison Street Houston, Mississippi 38851



FOR FINANCING OPTIONS AND LOAN QUOTES:
Please contact SRS Debt & Equity at jordan.yarosh@srsre.com



PROGRESSIVE HEALTH OF HOUSTON

phghealth.com

Company Type: Private

Locations: 1

Progressive Health of Houston is a single-location Rural Emergency Hospital (REH) located in Houston, Mississippi. The facility provides 24/7 emergency care services ranging from minor injuries to life-threatening conditions, and also offers outpatient and ancillary services including cardiopulmonary rehabilitation, internal medicine, laboratory services, and outpatient radiology. The operator has played a key role in advancing the Rural Emergency Hospital model.

Source: phghealth.com/about



THE EXCLUSIVE NATIONAL NET LEASE TEAM of SRS Real Estate Partners

300+

TEAM
MEMBERS

29

OFFICES

\$6.5B+

TRANSACTION
VALUE
company-wide
in 2025

930+

CAPITAL MARKETS
PROPERTIES
SOLD
in 2025

\$3.5B+

CAPITAL MARKETS
TRANSACTION
VALUE
in 2025



© 2026 SRS Real Estate Partners, LLC. All rights reserved.

All information in this document and related marketing materials is confidential and intended solely for the recipient and their authorized representatives. This document was prepared by SRS Real Estate Partners, LLC ("SRS") and approved for distribution. While reasonable efforts were made to ensure accuracy, SRS and those represented by SRS make no guarantees, representations, or warranties—express or implied—regarding the completeness or accuracy of the information provided, whether in this document or any other form of communication. Documents have been referred to in summary and should not be considered legal analysis. This material is not all-inclusive and may not contain all the information you require. Any financial projections are provided for reference only and reflect assumptions as of the date of preparation. They may not account for changes in economic performance, market conditions, or future activities related to the property. These materials were created for marketing purposes only and no recipient should make any investment decision predicated on the information contained within. Recipients are strongly encouraged to conduct their own independent evaluation and analysis of any received information and of the subject property.

SRSRE.COM/CapitalMarkets