

# COURT HOUSE SQUARE

237 2nd Avenue SW, Cambridge, MN 55008

**CENTURY 21  
COMMERCIAL.**

Moline Realty, Inc

**Carrie Gibbs, Broker/Owner, Commercial Specialist**

*CENTURY 21 Moline Realty, Inc*

*763-245-6431*

*License: 20542911*

*carrie@century21moline.com*

**2**

**Property Info & Disclaimer**

**3**

**Property Description**

**7**

**Property Photos**

**10**

**Demographic Analysis**

**14**

**Aerial & Location Report**

# TABLE OF CONTENTS

## COURT HOUSE SQUARE



# PROPERTY INFORMATION

# COURT HOUSE SQUARE

237 2nd Avenue SW  
Cambridge, MN  
55008

**ANNUAL RENT**  
*\$15.00/ per SQ. FT.*

**PROPERTY ADDRESS**  
*237 2nd Avenue SW, Cambridge, MN 55008*

**RENTABLE AREA**  
*13,000 Sq. Ft.*

### Company Disclaimer

This information has been obtained from sources believed reliable. We have not verified it and make no guarantee, warranty or representation about it. Any projections, opinions, assumptions or estimates used are for example only and do not represent the current or future performance of the property. You and your advisors should conduct a careful, independent investigation of the property to determine to your satisfaction the suitability of the property for your needs. Photos herein are the property of their respective owners and use of these images without the express written consent of the owner is prohibited..

# PROPERTY OVERVIEW

Court House Square Historic Office Suites for Lease in Downtown Cambridge. Step into a piece of Isanti County history at Court House Square, originally built in 1887 and thoughtfully restored to combine timeless charm with modern functionality. Located just one block from Main Street and within walking distance to restaurants, retail shops, and professional services, this iconic building offers a distinctive environment for your business to thrive. Court House Square features: A variety of office suites available with flexible layouts.



## COURT HOUSE SQUARE

237 2nd Avenue SW, Cambridge, MN 55008

**CENTURY 21  
COMMERCIAL**  
Moline Realty, Inc

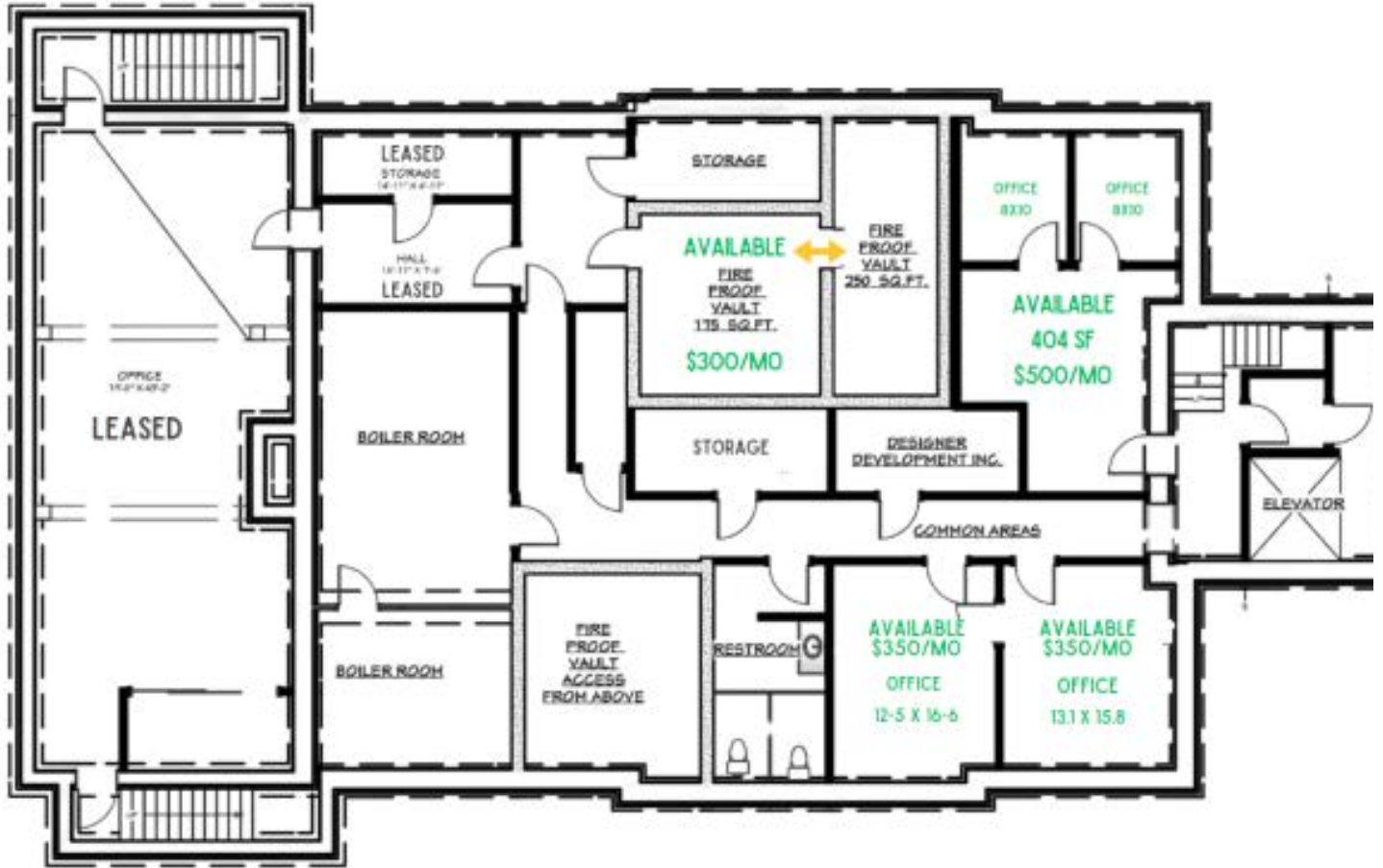
CENTURY 21 Commercial, the CENTURY 21 Commercial Logo and C21 Commercial are registered service marks owned by Century 21 Real Estate LLC. Century 21 Real Estate LLC fully supports the principles of the Fair Housing Act and Equal Opportunity Act. Each office is independently owned and operated.  
©Copyright 2011-2025 CRE Tech, Inc. All Rights Reserved.

# PROPERTY DETAILS

**Court House Square – Historic Office Suites for Lease in Downtown Cambridge. Step into a piece of Isanti County history at Court House Square, originally built in 1887 and thoughtfully restored to combine timeless charm with modern functionality. Located just one block from Main Street and within walking distance to restaurants, retail shops, and professional services, this iconic building offers a distinctive environment for your business to thrive. Court House Square features: A variety of office suites available with flexible layouts. Gross lease rates starting at \$15 per square foot annually. Tenants pay only for phone and internet services. Heat, electricity, water/sewer, taxes, garbage service, parking, and common area maintenance all included. Handicap-accessible building with elevator service. On-site, on-street and nearby city parking is available. Professionally maintained historic building with excellent corner location and signage. Enjoy modern amenities like updated heating and cooling, high ceilings, operable insulated windows, and full audio/video wiring, all within the character of a registered historic site. Perfect for professionals, creatives, or growing teams looking for a memorable and functional workspace in a central location. Contact us today to schedule a tour and explore available suites!**

**Tenant Representatives/Tenants to verify all information, zoning rules and restrictions, etc. Contact Carrie Gibbs, Broker/Owner directly to schedule showings. There is not a lockbox on the premises.**

# PROPERTY DETAILS



LOWER LEVEL FLOOR PLAN

# PROPERTY DETAILS



**UPPER LEVEL FLOOR PLAN**

# PROPERTY PHOTOS



# COURT HOUSE SQUARE

237 2nd Avenue SW, Cambridge, MN 55008

# PROPERTY PHOTOS

# COURT HOUSE SQUARE

237 2nd Avenue SW, Cambridge, MN 55008



CENTURY 21 Commercial<sup>®</sup>, the CENTURY 21 Commercial Logo and C21 Commercial<sup>®</sup> are registered service marks owned by Century 21 Real Estate LLC. Century 21 Real Estate LLC fully supports the principles of the Fair Housing Act and Equal Opportunity Act. Each office is independently owned and operated.

©Copyright 2011-2025 CRE Tech, Inc. All Rights Reserved.

**CENTURY 21  
COMMERCIAL**  
Moline Realty, Inc.

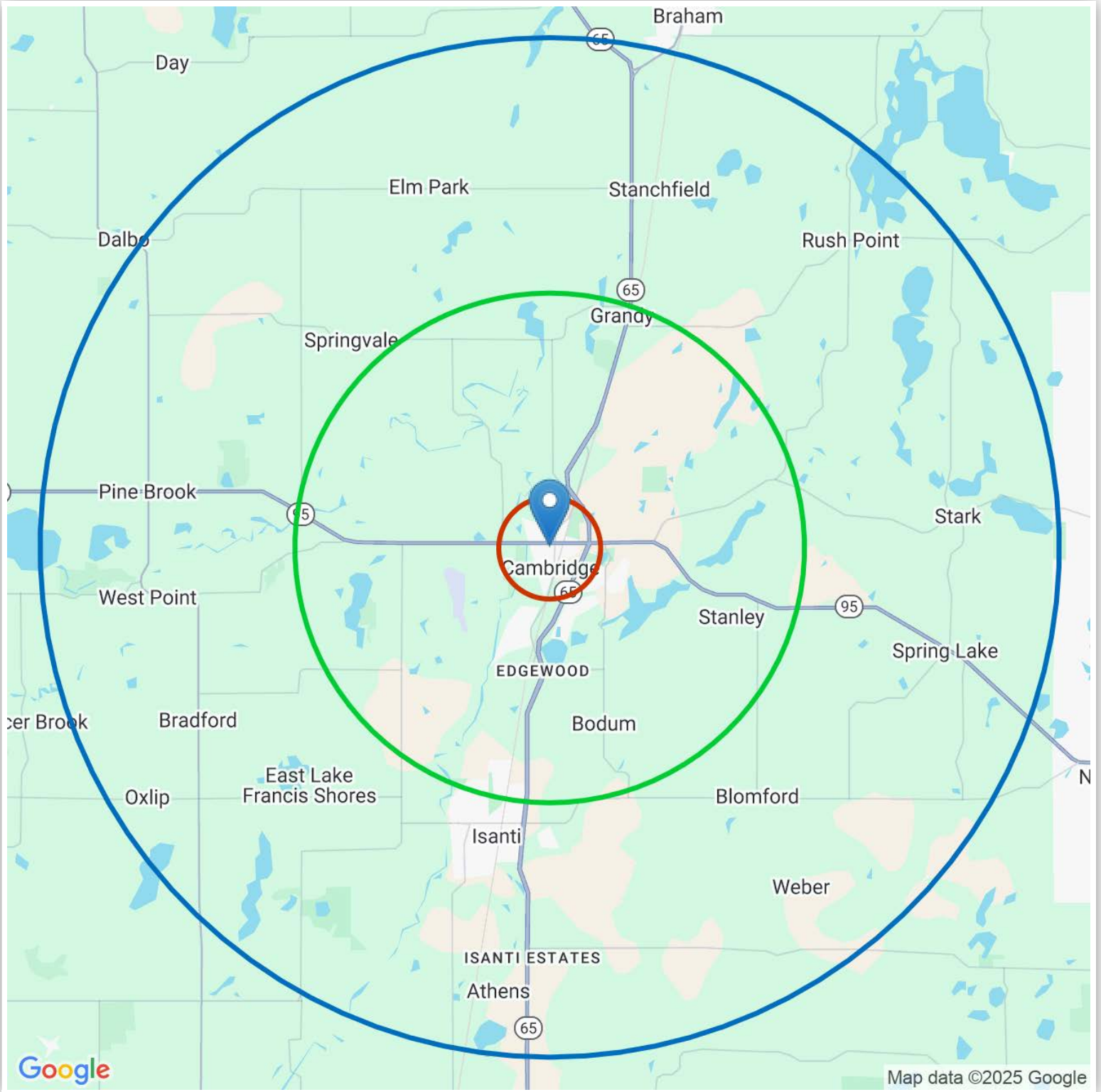
# PROPERTY PHOTOS



# COURT HOUSE SQUARE

237 2nd Avenue SW, Cambridge, MN 55008

# LOCATION/STUDY AREA MAP (RINGS: 1, 5, 10 MILE RADIUS)



## COURT HOUSE SQUARE

237 2nd Avenue SW, Cambridge, MN, 55008

CENTURY 21 Commercial, the CENTURY 21 Commercial Logo and C21 Commercial are registered service marks owned by Century 21 Real Estate LLC. Century 21 Real Estate LLC fully supports the principles of the Fair Housing Act and Equal Opportunity Act. Each office is independently owned and operated.

©Copyright 2011-2025 CRE Tech, Inc. All Rights Reserved.

CENTURY 21  
COMMERCIAL  
Malmo Realty, Inc.

# INFOGRAPHIC: KEY FACTS (RING: 1 MILE RADIUS)

## KEY FACTS

**4,223**  
Population

**38.3** Median Age

**2.29**  
Average Household Size

**1,721**  
Total Households

## EDUCATION

4.99%  
No High School Diploma

6.74%  
High School Graduate

24.93%  
Some College

14.7%  
Bachelor's/ Grad

## BUSINESS

**376**  
Total Businesses

**4,988**  
Total Employees

## EMPLOYMENT

**1,055**  
Retail Trade Employees

**481**  
Manufacturing Employees

**338**  
Finance/Ins/Real Estate Emp

**456**  
Eating & Drinking Employees

**2.3%** Unemployment Rate

## INCOME

**\$55,919**  
Median Household Income

**\$33,636**  
Per Capita Income

**\$114,897**  
Median Net Worth

## Households by Income

The largest group : \$75,000 - \$99,999 (16.61%) ■

The smallest group : \$200,000+ (4.39%) ■

Indicator	Value(%)	
< \$15,000	7.72	■
\$15,000 - \$24,999	8.33	■
\$25,000 - \$34,999	15	■
\$35,000 - \$49,999	14.78	■
\$50,000 - \$74,999	13.56	■
\$75,000 - \$99,999	16.61	■
\$100,000 - \$149,999	14.28	■
\$150,000 - \$199,999	5.28	■
\$200,000+	4.39	■



Copyright © 2024 TheAnalyst PRO by CRE Tech, Inc. <https://TheAnalystPRO.com>  
This infographic contains data provided by Esri.

## COURT HOUSE SQUARE

237 2nd Avenue SW, Cambridge, MN, 55008

# INFOGRAPHIC: KEY FACTS (RING: 5 MILE RADIUS)

## KEY FACTS

**17,177**  
Population

**39.3** Median Age

**2.53**  
Average Household Size

**6,133**  
Total Households

## EDUCATION

4.36%  
No High School Diploma

6.07%  
High School Graduate

25.84%  
Some College

15.05%  
Bachelor's/ Grad

## BUSINESS

**638**  
Total Businesses

**8,711**  
Total Employees

## EMPLOYMENT

**2,203**  
Retail Trade Employees

**608**  
Manufacturing Employees

**430**  
Finance/Ins/Real Estate Emp

**751**  
Eating & Drinking Employees

**2.4%** Unemployment Rate

## INCOME

**\$80,745**  
Median Household Income

**\$39,885**  
Per Capita Income

**\$269,235**  
Median Net Worth

## Households by Income

The largest group : \$100,000 - \$149,999 (20.91%) ■

The smallest group : \$15,000 - \$24,999 (5.36%) ■

Indicator	Value(%)	
< \$15,000	5.63	■
\$15,000 - \$24,999	5.36	■
\$25,000 - \$34,999	9.24	■
\$35,000 - \$49,999	11.48	■
\$50,000 - \$74,999	13.62	■
\$75,000 - \$99,999	16.03	■
\$100,000 - \$149,999	20.91	■
\$150,000 - \$199,999	9.37	■
\$200,000+	8.34	■



Copyright © 2024 TheAnalyst PRO by CRE Tech, Inc. <https://TheAnalystPRO.com>  
This infographic contains data provided by Esri.

## COURT HOUSE SQUARE

237 2nd Avenue SW, Cambridge, MN, 55008

# INFOGRAPHIC: KEY FACTS (RING: 10 MILE RADIUS)

## KEY FACTS

**36,973**  
Population

**39.7** Median Age

**2.6**  
Average Household Size

**13,119**  
Total Households

## EDUCATION

5.13%  
No High School Diploma

5.74%  
High School Graduate

23.61%  
Some College

15.63%  
Bachelor's/ Grad

## BUSINESS

**1,070**  
Total Businesses

**11,682**  
Total Employees

## EMPLOYMENT

**2,979**  
Retail Trade Employees

**926**  
Manufacturing Employees

**557**  
Finance/Ins/Real Estate Emp

**1,041**  
Eating & Drinking Employees

**3.1%** Unemployment Rate

## INCOME

**\$89,189**  
Median Household Income

**\$41,775**  
Per Capita Income

**\$333,925**  
Median Net Worth

## Households by Income

The largest group : \$100,000 - \$149,999 (23.66%) ■

The smallest group : \$15,000 - \$24,999 (4.36%) ■

Indicator	Value(%)	
< \$15,000	5.35	■
\$15,000 - \$24,999	4.36	■
\$25,000 - \$34,999	7	■
\$35,000 - \$49,999	9.46	■
\$50,000 - \$74,999	14.1	■
\$75,000 - \$99,999	15.26	■
\$100,000 - \$149,999	23.66	■
\$150,000 - \$199,999	11.57	■
\$200,000+	9.24	■

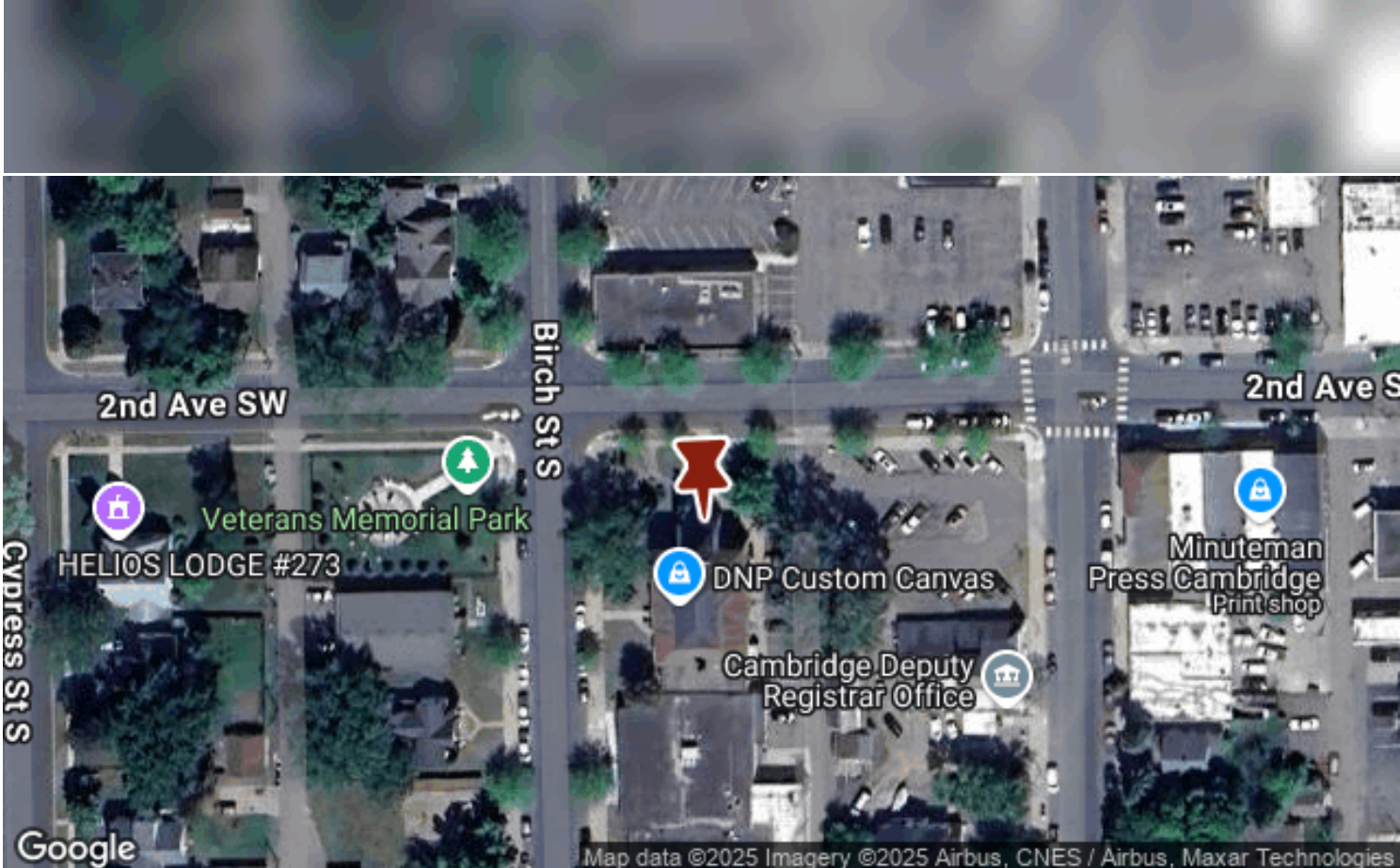


Copyright © 2024 TheAnalyst PRO by CRE Tech, Inc. <https://TheAnalystPRO.com>  
This infographic contains data provided by Esri.

## COURT HOUSE SQUARE

237 2nd Avenue SW, Cambridge, MN, 55008

# AERIAL ANNOTATION MAP



# Court House Square

237 2nd Avenue SW, Cambridge, MN, 55008

# CONTACT



## Carrie Gibbs, Broker/Owner, Commercial Specialist

Phone: 763-245-6431

Email: [carrie@century21moline.com](mailto:carrie@century21moline.com)

License: 20542911

## COURT HOUSE SQUARE

237 2nd Avenue SW  
Cambridge, MN 55008

## CENTURY 21 COMMERCIAL.

Moline Realty, Inc



763-245-6431



[carrie@century21moline.com](mailto:carrie@century21moline.com)



202 Main Street South  
Cambridge, MN 55008 United States

CENTURY 21 Commercial<sup>®</sup>, the CENTURY 21 Commercial Logo and C21 Commercial<sup>®</sup> are registered service marks owned by Century 21 Real Estate LLC. Century 21 Real Estate LLC fully supports the principles of the Fair Housing Act and Equal Opportunity Act. Each office is independently owned and operated..

©Copyright 2011-2025 CRE Tech, Inc. All Rights Reserved.