

# 149 Main St Freeport, Maine Available for Lease

5,896 SF  
.41 Acres



Currently Thos. Moser Furniture

**Direct Inquiries to:**

149mainstfreeportme@gmail.com

617-755-8832

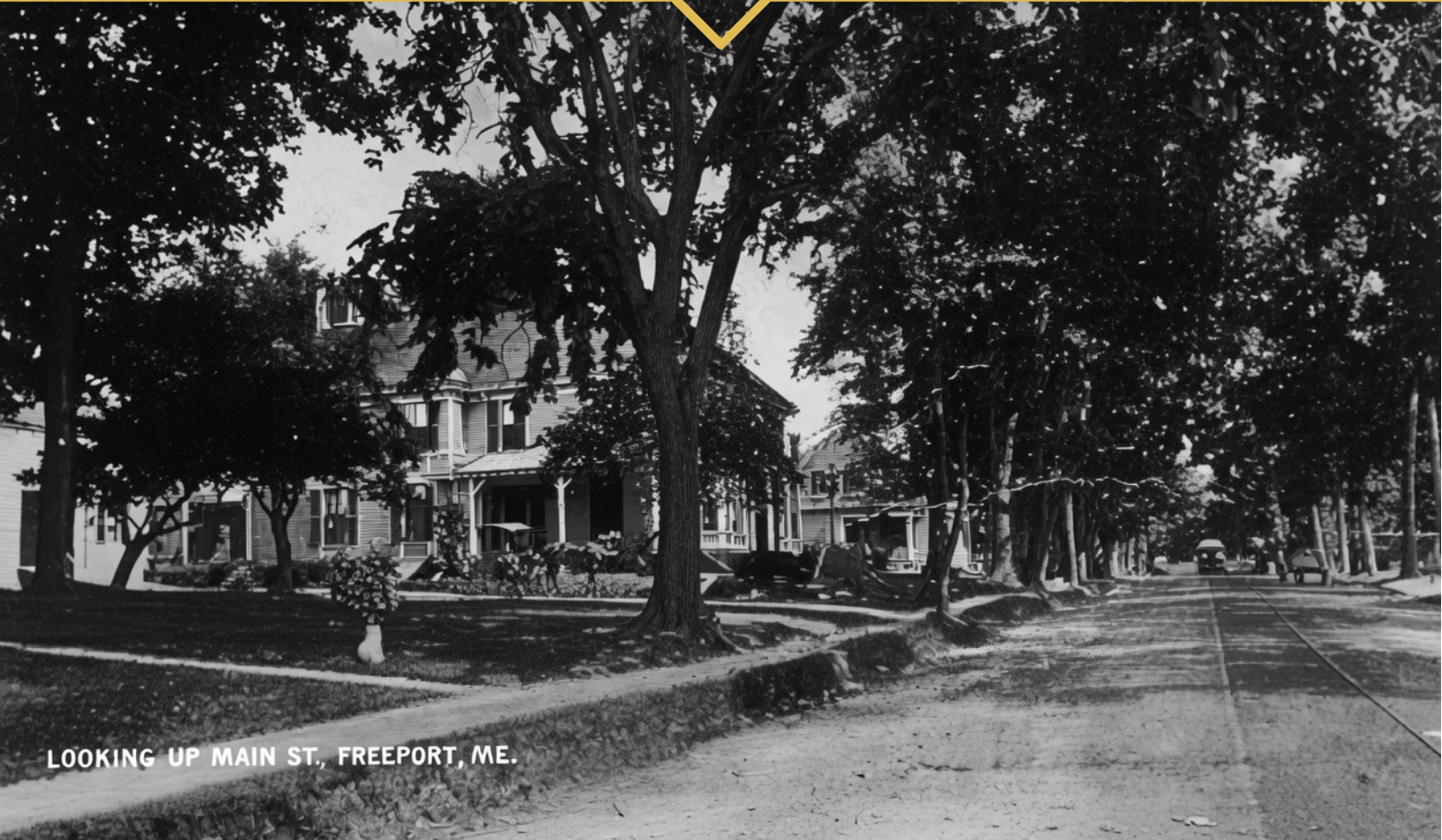


# Property Features



- Prime Retail Location Downtown Freeport
- Current Home to Flagship Showroom Moser Furniture
- 5,896 SQ. FT. Victorian on .41 Acres
- Parking, Garages, Loading, Storage, and Basement
- Steps to L.L. Bean at 95 Main St and next to Mcdonalds
- Immediate Access I-95
- 20 Minutes North of Portland
- Walking Distance to Amtrak and Bus Station
- ZONED VC-II

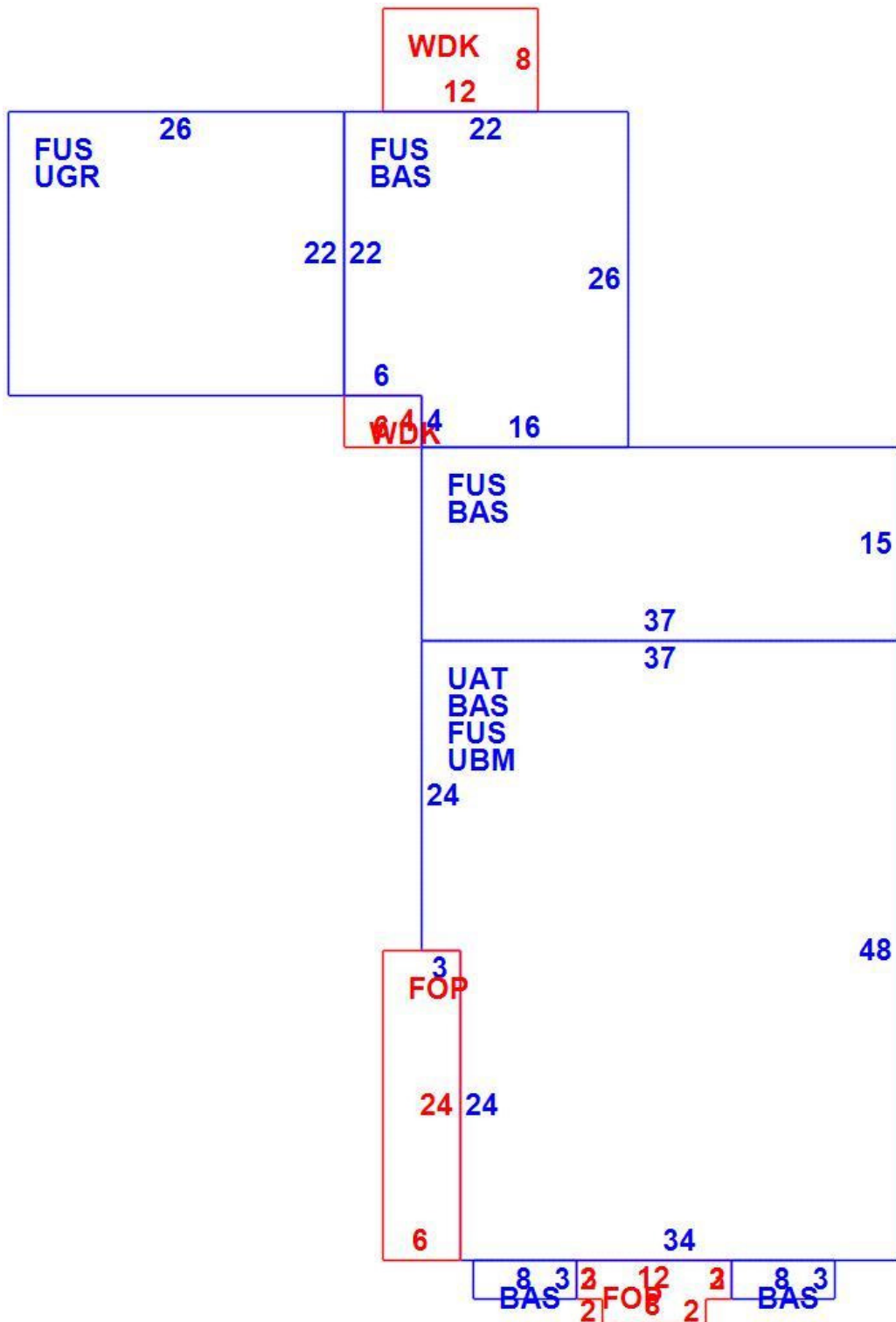
# Photos



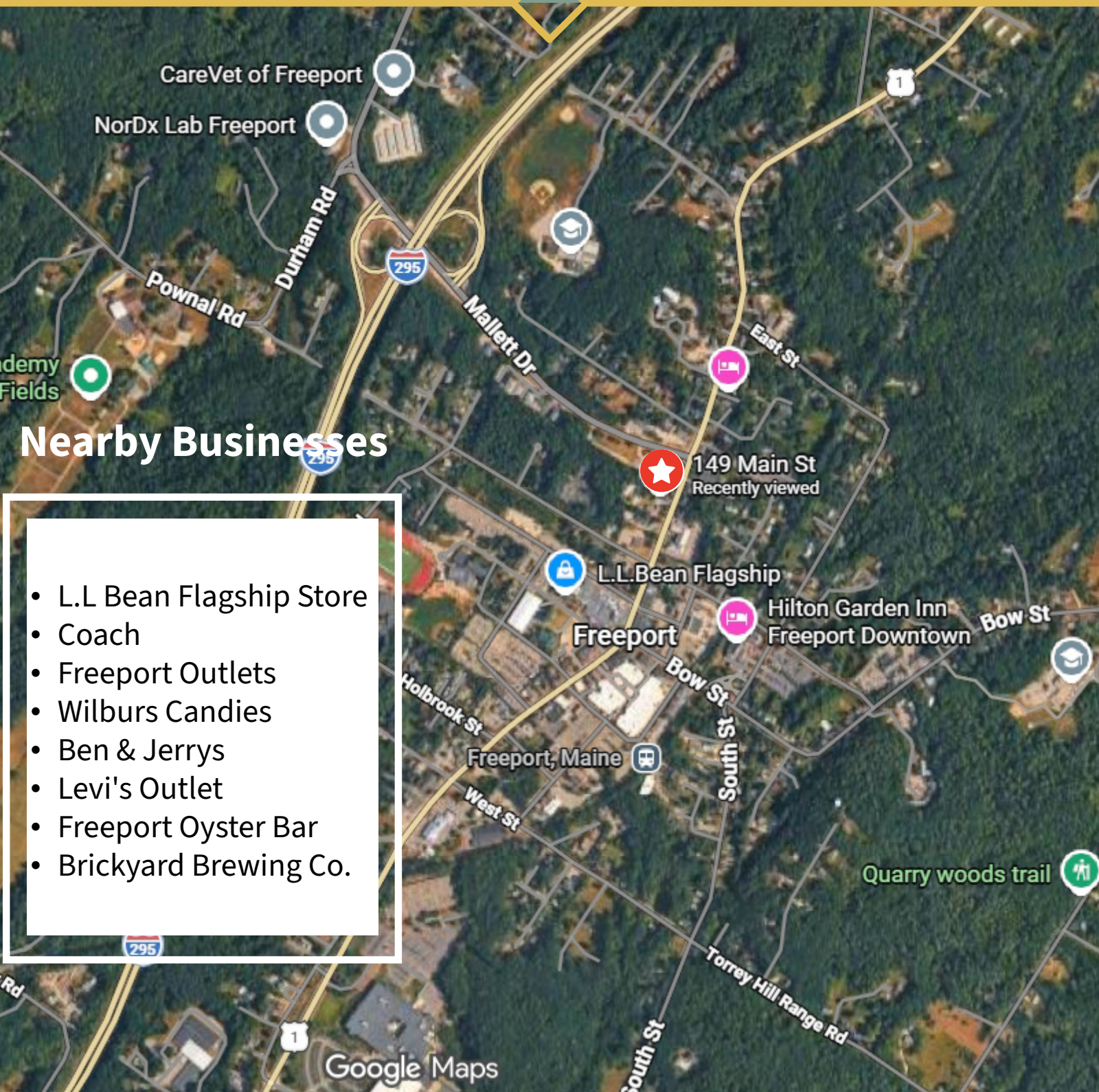
LOOKING UP MAIN ST, FREEPORT, ME.



# Building Layout



# Map



## Nearby Businesses

- L.L Bean Flagship Store
- Coach
- Freeport Outlets
- Wilburs Candies
- Ben & Jerrys
- Levi's Outlet
- Freeport Oyster Bar
- Brickyard Brewing Co.

