

PALM LAKE AT TAMPA PALMS

15310 Amberly Drive
Tampa, FL 33647

Class 'A' Office Space For Lease



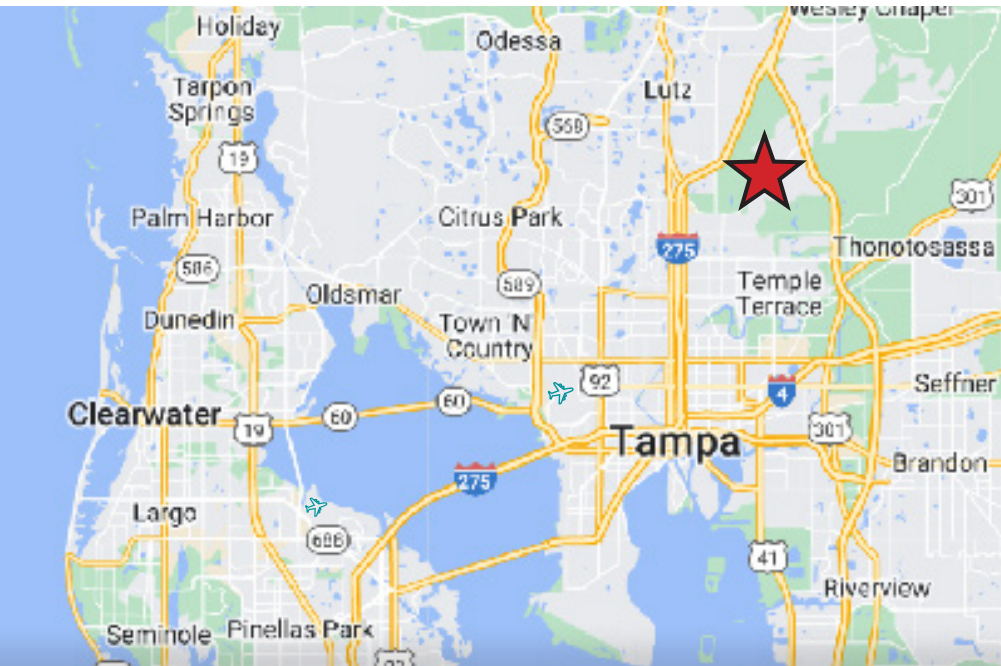
AVAILABLE SUITES

SUITE	SIZE (RSF)	AVAILABLE
190	1,206	9/01/2026
195	2,097	Now
210	978 - 4,158	Now
220	3,180 - 4,158	Now
330	1,181	Now

Contiguous Suites

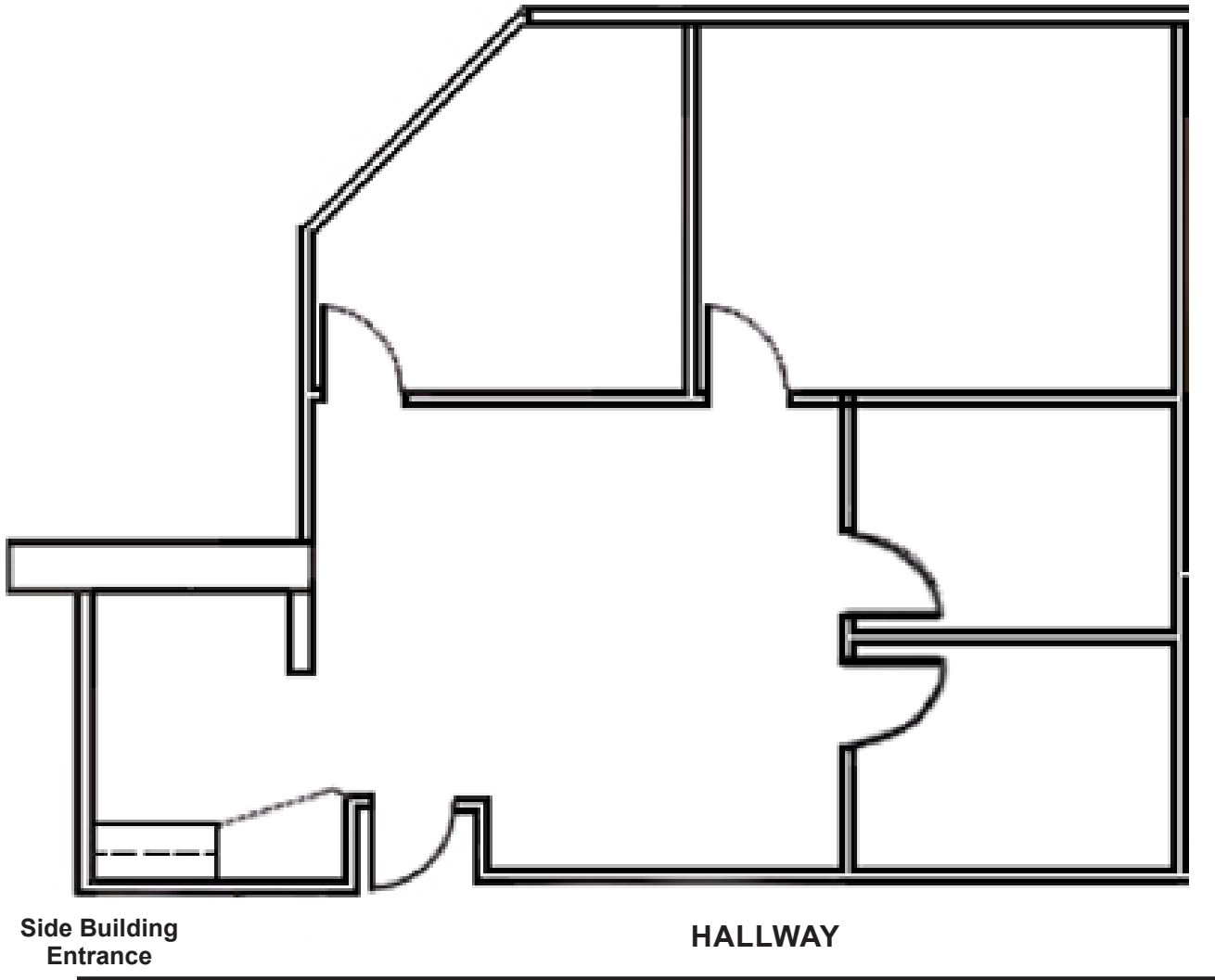
PROPERTY HIGHLIGHTS

- Move-in ready condition with upgraded finishes & glass wall inserts
- Spectacular view of lake & cascading water feature
- Motion-activated light system
- Free parking at a ratio of 4 spaces / 1,000 SF leased
- Secure building with 24/7 tenant access via Regus
- On-site property management
- Convenient access to I-75, I-275, University of South Florida, and Florida Hospital-Tampa

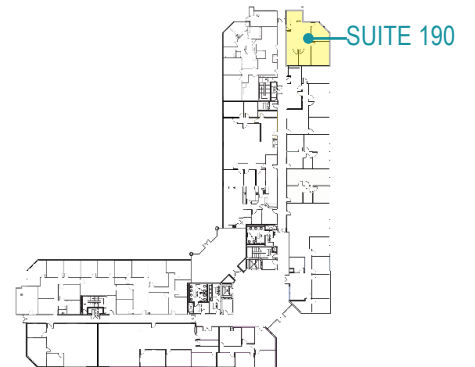


SUITE 190: 1,206 RSF

Available 9/01/2026

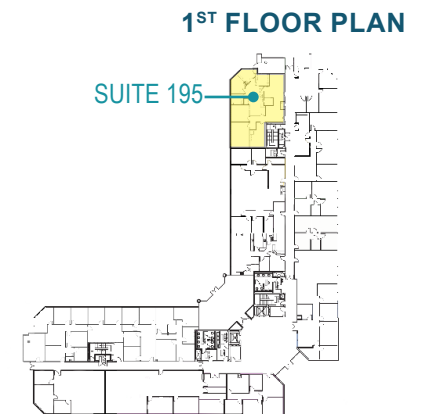


1ST FLOOR PLAN

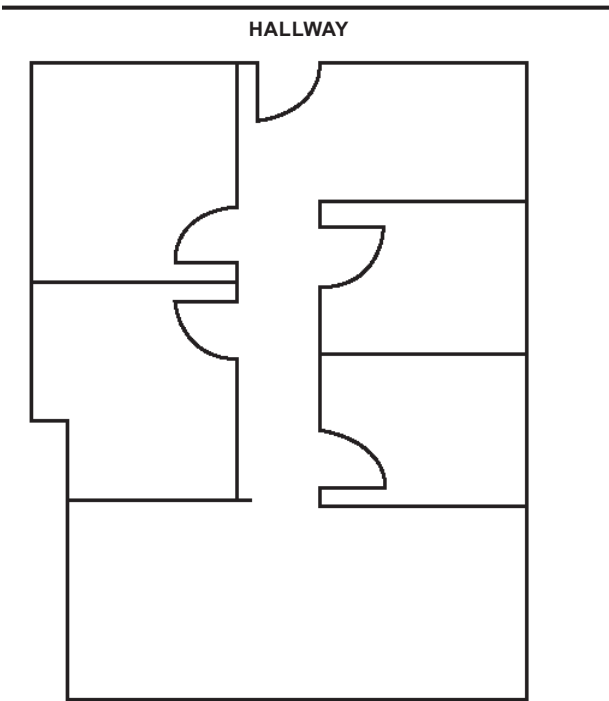


SUITE 195: 2,097 RSF

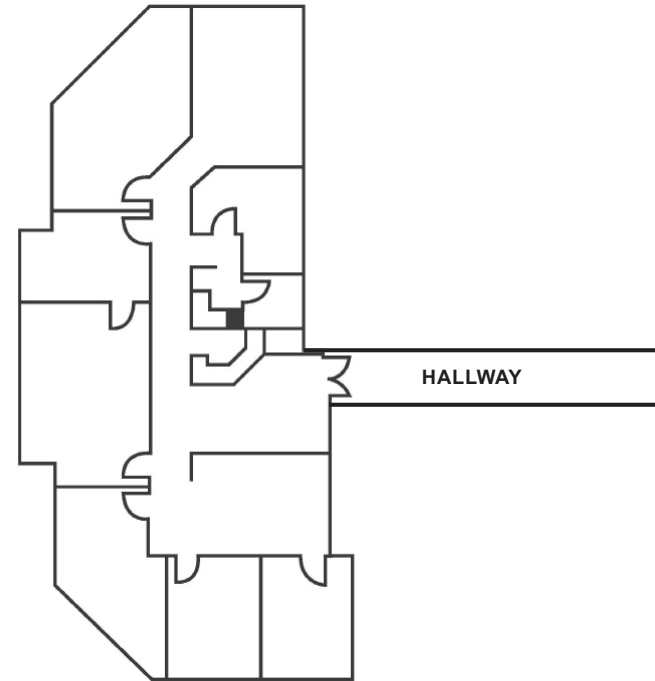
Great For Medical Use - Prior Dental Surgery Suite



SUITE 210: 978 RSF

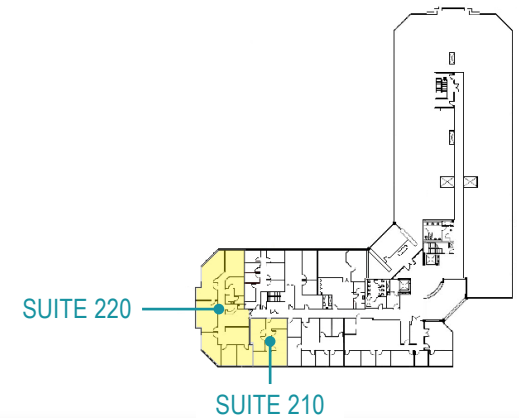


SUITE 220: 3,180 RSF



Suites 210 & 220 are contiguous, offering up to 4,158 RSF

2ND FLOOR PLAN



SUITE 330: 1,181 RSF

