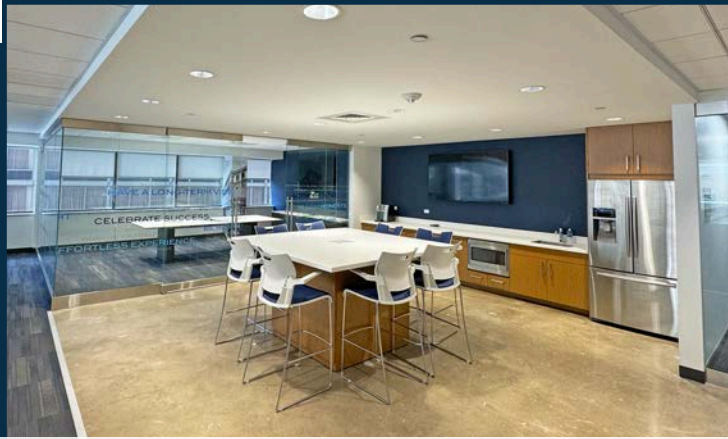


1760 MARKET STREET PHILADELPHIA, PA

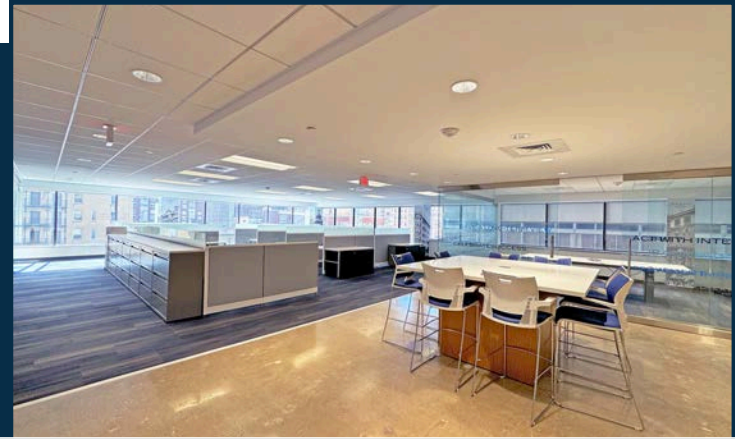
17
60
MKT

SUITE 800 | 3,294 RSF

FULLY FURNISHED, MOVE-IN READY SUITE



FULL KITCHEN AND DINING AREA



OPEN WORK AREA WITH LARGE WINDOWS

SPACE HIGHLIGHTS



Two private offices, full kitchen, and dining area



Large glass-enclosed conference room



Column-free, open work area with abundance of natural light



Fully-furnished, move-in ready suite

SUITE 800
VIRTUAL TOUR



BUILDING FEATURES

- Sophisticated boutique environment
- On-site building management
- Keystone Innovation Zone opportunity
- Tenant lounge and building conference center
- Designated bike room
- 24/7 manned security desk



ADDITIONAL BUILDING ENHANCEMENTS PLANNED



STOCKTON
REAL ESTATE ADVISORS

PRIME MARKET STREET LOCATION AT THE LOWEST MARKET (STREET) RATE!

- Column-free floor plates providing maximum efficiency and flexible open floor plans.
- Unparalleled connectivity with easy access to Suburban Station, I-676, I-76, and I-95. Conveniently located minutes from PATCO Speedline and 30th Street Station.



TENANT LOUNGE & CONFERENCE ROOM

BUILDING AMENITIES

- Conference Center
- Bike Storage
- On-Site Management
- Tenant Lounge
- On-Site Banking
- 24/7 Security

Prime corner office building located directly on Philadelphia's "Pedestrian Highway"

RETAIL
NEW & COMING SOON

- EQUINOX
- Levain
- GLOWBAR
- WORLD OF FLIGHT
- ARITZIA
- FIGS
- SKIN LAUNDRY
- FLIGHT CLUB
- ayat
- Lucy's
- Reformation

Map details include: Market Street, 15th Street Station, 15th Street, Dilworth Park, City Hall, Broad Street Line, Chestnut Street, Sansom Street, Walnut Street, 16th Street, 17th Street, Locust Street, 18th Street, Pedestrian Highway, Rittenhouse Square, and various retail and dining establishments like Equinox, Levain, and Anthropologie.

WALK SCORE
100

TRANSIT SCORE
100

BIKE SCORE
82

Nearby Amenities

- Parking
- Hotels
- Gyms

Jacklyn Hadzor
609.760.9985
jhadzor@StocktonREA.com

Stockton Real Estate Advisors, LLC
1760 Market Street, Suite 900, Philadelphia, PA
215.636.4444 | www.StocktonREA.com

