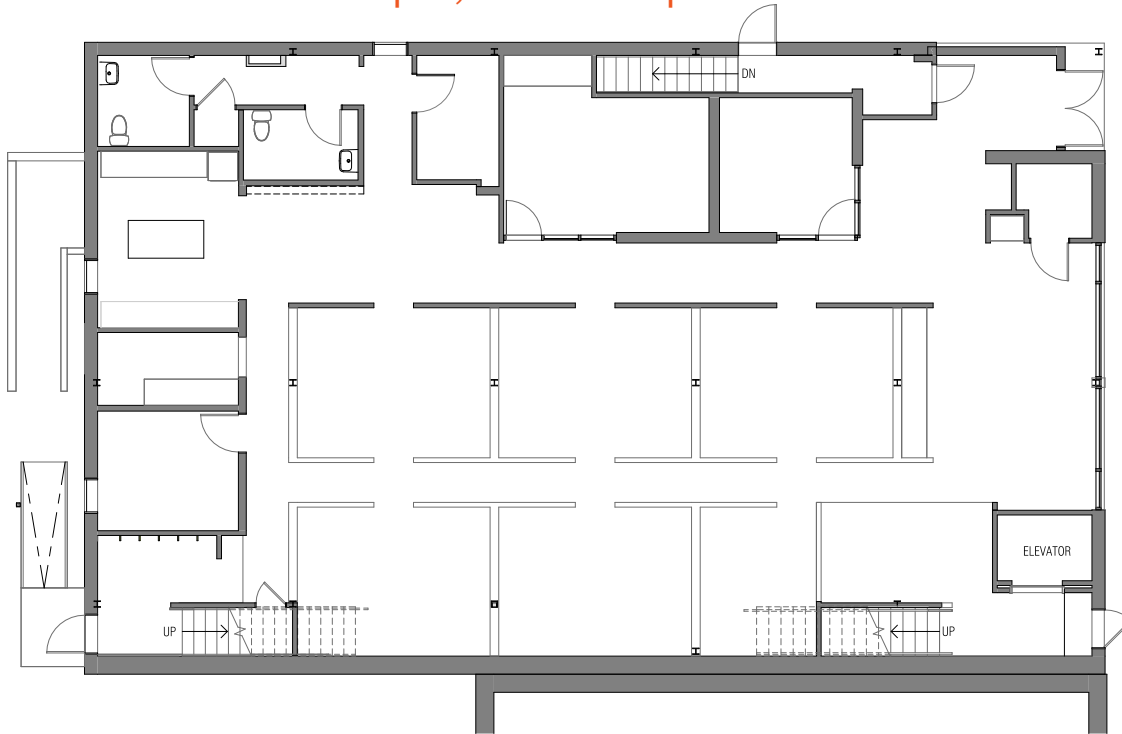


Office / Service Retail Space for Lease

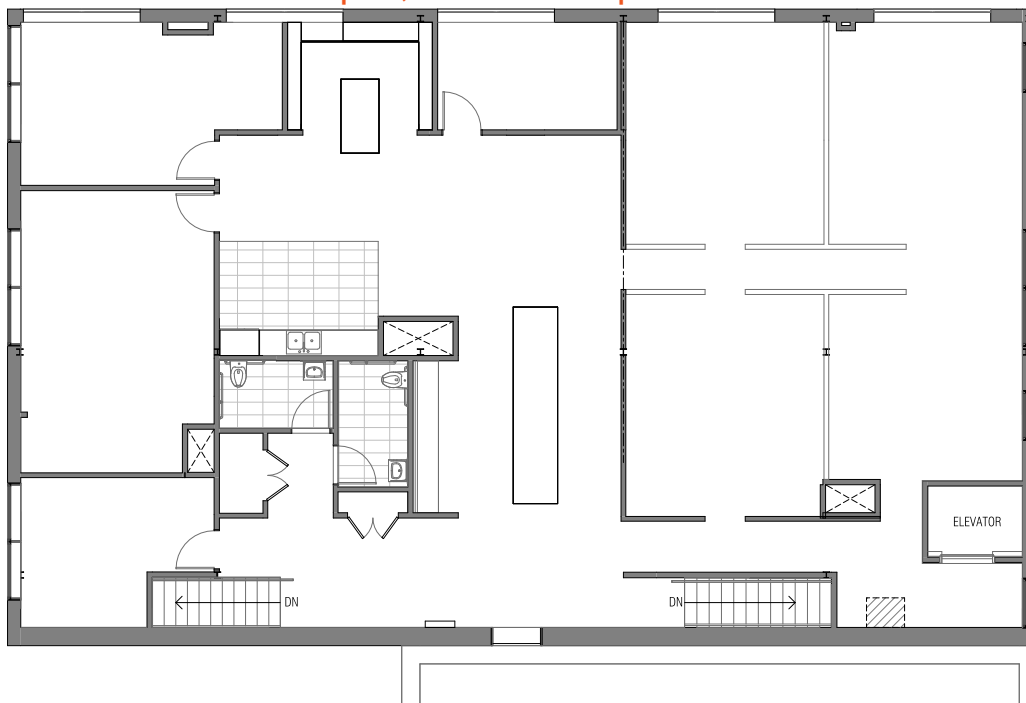
FIRST & SECOND FLOOR | 3,794 - 9,397 RSF FULL BUILDING

115 15TH AVE E, SEATTLE, WA 98112

First Floor | 3,794 RSF | Renovated 2016



Second Floor | 3,888 RSF | Renovated 2020



FOR MORE INFO
CONTACT

BOJIDAR GABROVSKI
847.275.8474
bgabrovski@orioncp.com

JACK DEANE
206.707.1315
jdeane@orioncp.com

1218 Third Avenue
Suite 2200
Seattle, WA 98101

www.orioncp.com

ORION
COMMERCIAL PARTNERS