



2 2 2

**N. PERSON ST
RALEIGH, NC 27601**

Office Space for Lease

L O D E N

LEASING

John Koonce

919.446.3339 ext. 110

john@lodendev.com

PROPERTY DESCRIPTION

222 N. PERSON STREET

OFFICE FOR LEASE

Lease Rate

\$32.00 PSF Full Service

AVAILABILITY

Ground Floor

Suite 10 ± 1,103 SF

Suite 12 ± 4,230 SF

Suite 16 ± 4,043 SF

First Floor

± 13,203 SF

Details

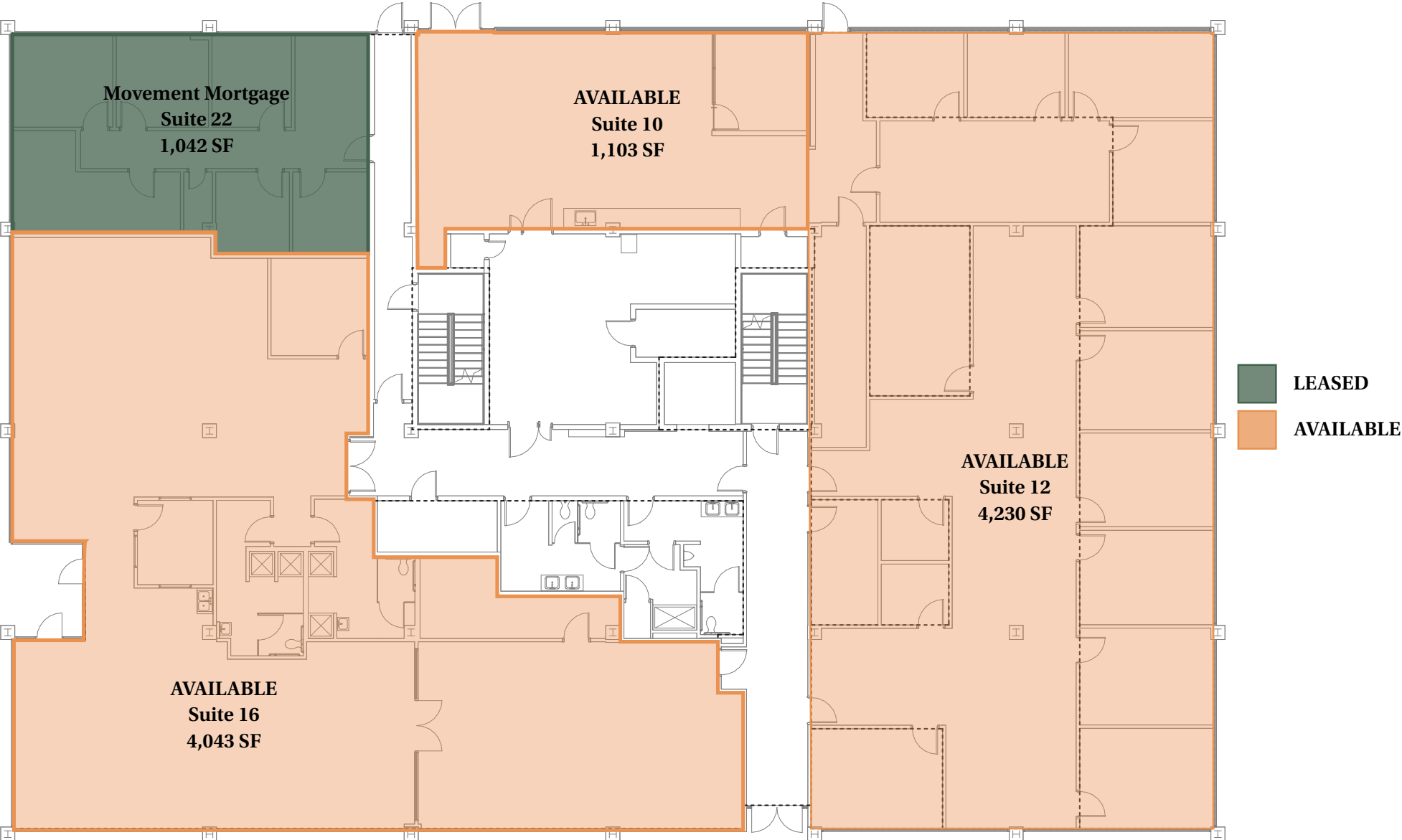
- ± 40,638 SF three-story office building in Historic Oakwood
- Some suites offer “in-office” restrooms including showers and exterior entrances
- Ground floor unit is suitable for light retail/fitness/yoga/pilates
- Built in 1971 and designed by renowned Raleigh architect, Milton Small and renovated in 2016
- Great natural light and tall windows
- Large parking lot with excellent lighting
- Adjacent to the Governor’s Mansion
- Walking distance to Person Street retail including Oakwood Pizza Box, (ish) delicatessen, Standard Foods, Yellow Dog Bakery, Two Roosters, Gringo A Go Go, Crawford and Sons, Jolie, and Side Street Cafe



GROUND FLOOR AVAILABILITY

222 N. PERSON STREET

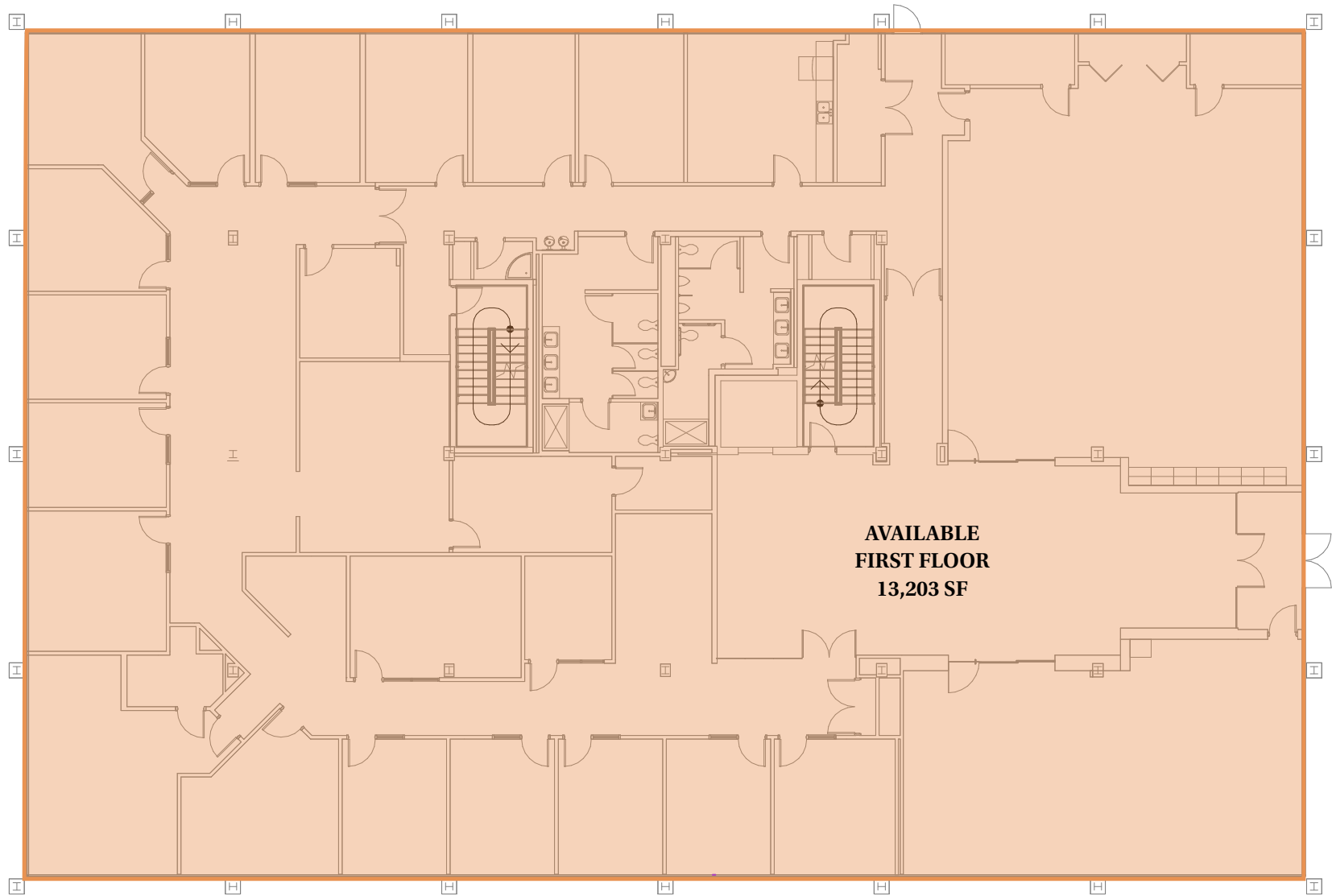
Ground floor features exterior entrance from Lane Street and parking lot



FIRST FLOOR AVAILABILITY

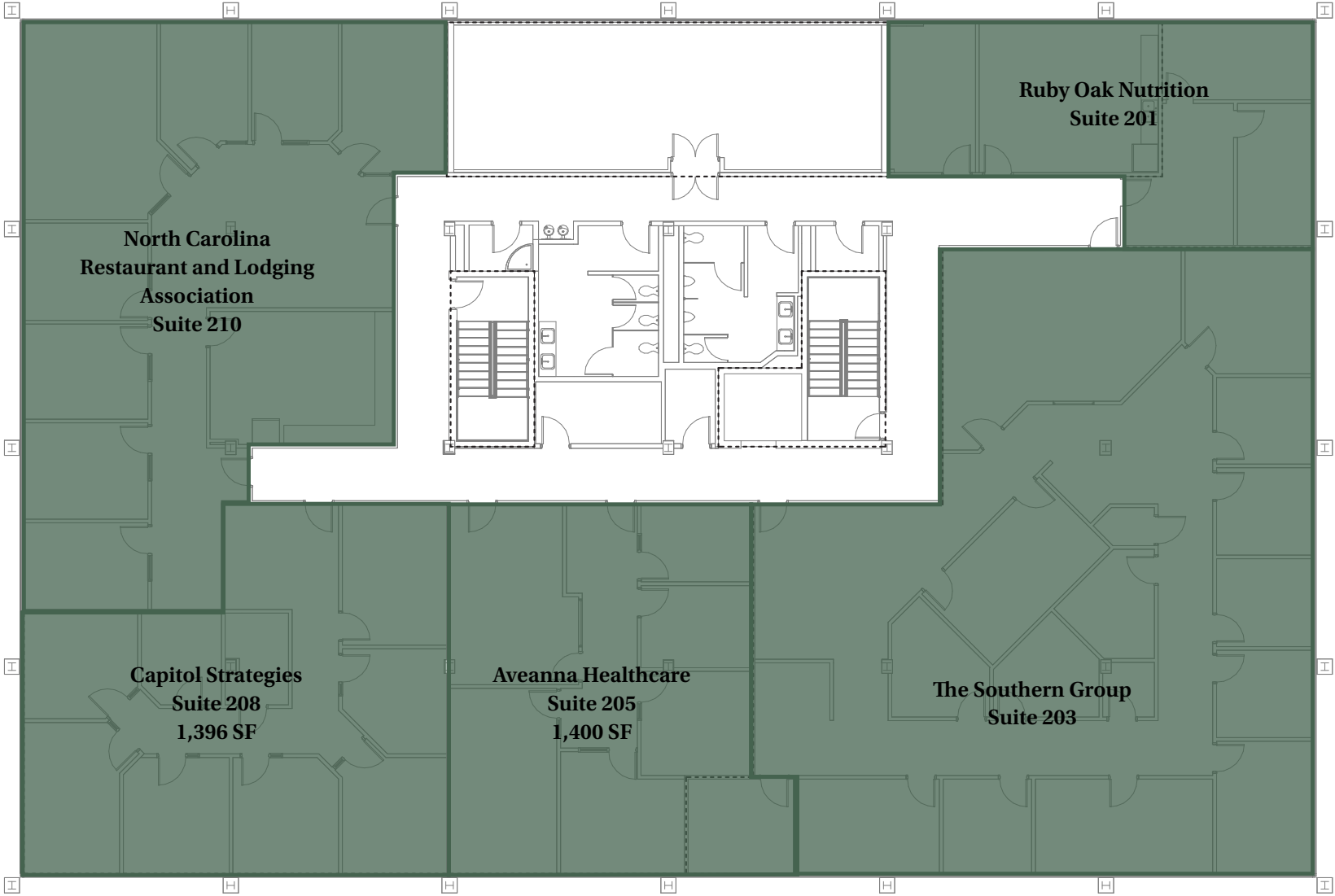
222 N. PERSON STREET

Features at-grade entrance from Person Street



SECOND FLOOR - LEASED

222 N. PERSON STREET



PROPERTY PHOTOS

222 N. PERSON STREET



SITE OVERVIEW

222 N. PERSON STREET



Seaboard Station
A newly redeveloped project
Retail
Restaurants
Entertainment
Apartments

Smoky Hollow
A brand new mixed-use development
Class A office
Structured parking
Urban apartments
Retail
Restaurants

Person St Retail
Standard Foods
Two Roosters
Yellow Dog
Crawford & Son
Jolie
Oakwood Pizza Box
Krispy Kreme

222
N. Person St

SIDE STREET RESTAURANT

LODEN

DEMOGRAPHICS

222 N. PERSON STREET

RALEIGH ACCOLADES

2025

Top 10 Best Cities to Start a Business

-WNCN

2nd Friendliest City in the U.S.

-YUZU, Match Group's social app

3rd Happiest City

-Smart Asset

No. 3 Best State Capitol to Live in

-WalletHub

Tapped as the Best-Performing Large Metro Area

-Milken Institute

No. 4 for Best Cities for Headquarters

-Triangle Business Journal

No. 7 Fastest Growing City in the U.S.

-U-Haul Annual Growth Report

2024 DEMOGRAPHIC REPORT

	1 Mile	3 Miles	5 Miles
Population	18,648	106,680	220,566
Households	9,939	42,5656	91,851
Avg. Household Income	\$108,653	\$98,192	\$89,829
Daytime Population	43,637	82,114	180,810



L O D E N