



# FLEX SPACE

1900 NORTHSIDE INDUSTRIAL BLVD  
COLUMBUS, GA 31904

REALTY  
RIVERCITIES  
SERVILLAS  
2821  
Top Teams

FOR LEASE



**ERNEST SMALLMAN IV, CCIM**

c 706-888-6651

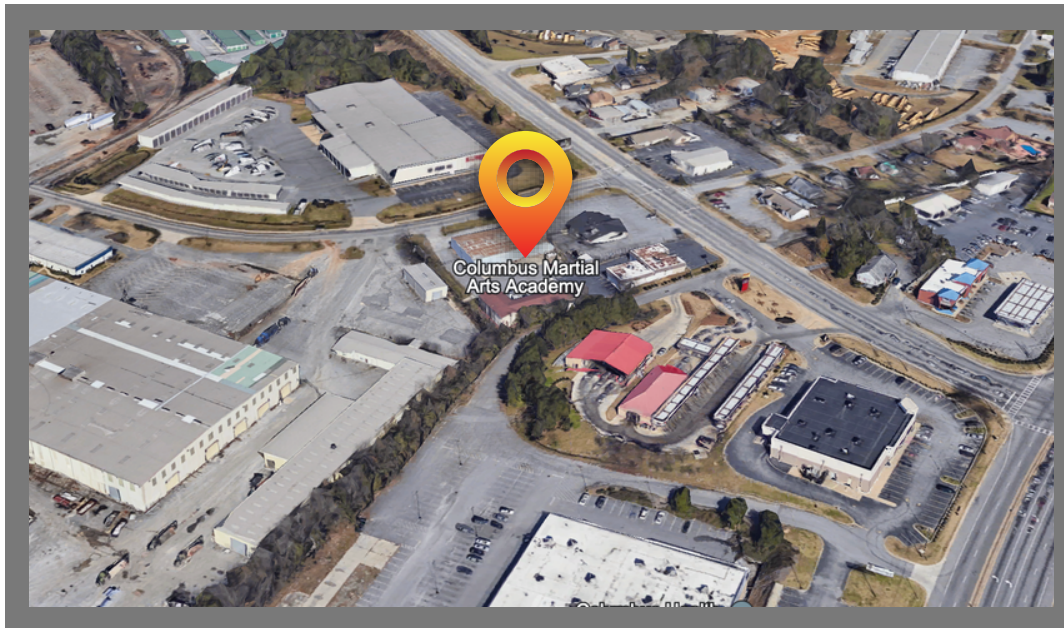
[ernie@erniesmallman.com](mailto:ernie@erniesmallman.com)

1025 1st Ave | Columbus, GA 31901 | 706-256-1500



**COLDWELL BANKER**

KENNON, PARKER,  
DUNCAN & DAVIS



## FEATURES

- ± 3,700 sq ft of flex space available
- Easy Access to Whitesville Rd, Bradley Park & Veterans Pkwy
- Established Businesses and Restaurants Surrounding
- High traffic counts of ± 17,500 on Whitesville Rd
- Opportunity for Road Signage that can be seen on Whitesville Road

Columbus  
Phenix City  
Ft Moore

**MARKET**

**LEASE RATE**  
**\$11.00 per ft**  
**PLUS CAM**

**ERNEST SMALLMAN IV, CCIM**

c 706-888-6651

[ernie@erniesmallman.com](mailto:ernie@erniesmallman.com)

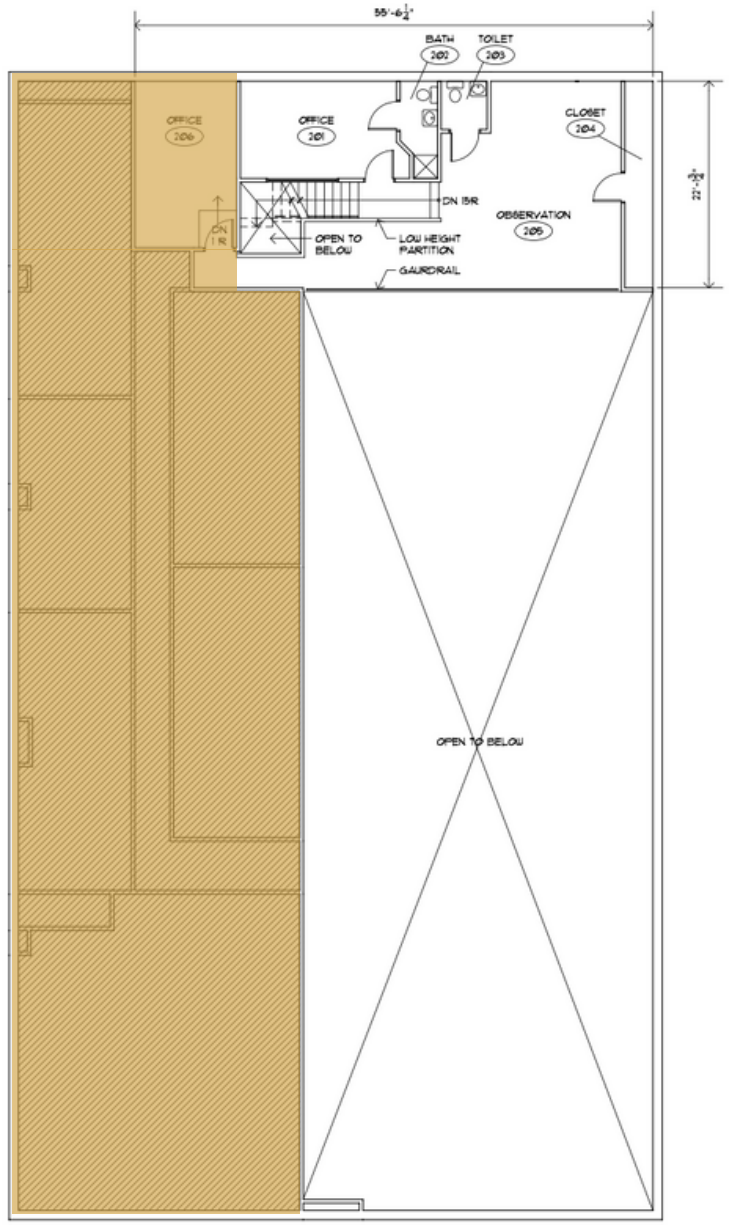
1025 1st Ave | Columbus, GA 31901 | 706-256-1500

\*The land acreage and/or building square footage was obtained from the County's Geographical Information System or other electronic resources. For exact square footage and/or acreage, we recommend that prior to purchase, a prospective Buyer/Tenant obtain a boundary survey or have the building measured professionally.

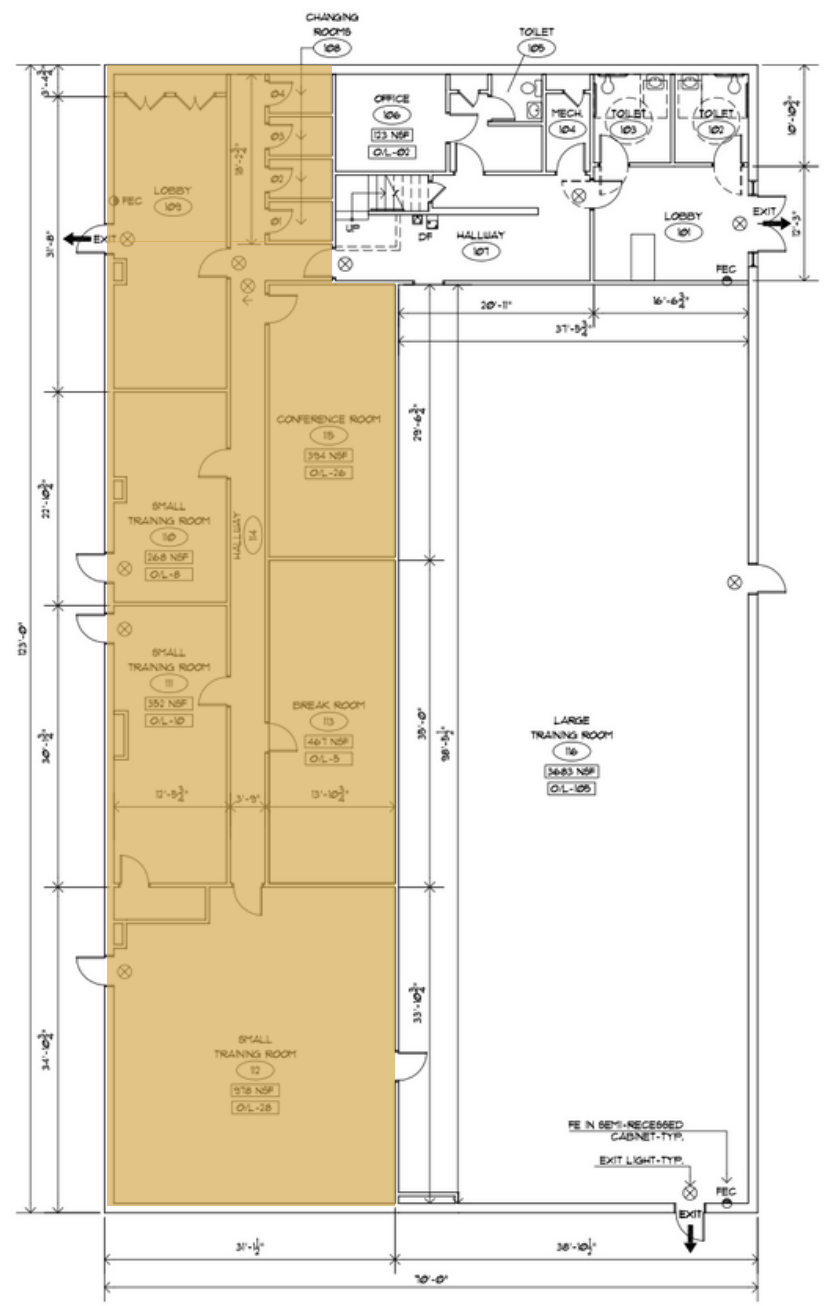
©2023 Coldwell Banker Real Estate LLC, dba Coldwell Banker Commercial Affiliates. All Rights Reserved. Coldwell Banker Real Estate LLC, dba Coldwell Banker Commercial Affiliates fully supports the principles of the Equal Opportunity Act. Each Office is Independently Owned and Operated. Coldwell Banker Commercial and the Coldwell Banker Commercial Logo are registered service marks owned by Coldwell Banker Real Estate LLC, dba Coldwell Banker Commercial Affiliates.



**COLDWELL BANKER**  
KENNON, PARKER,  
DUNCAN & DAVIS

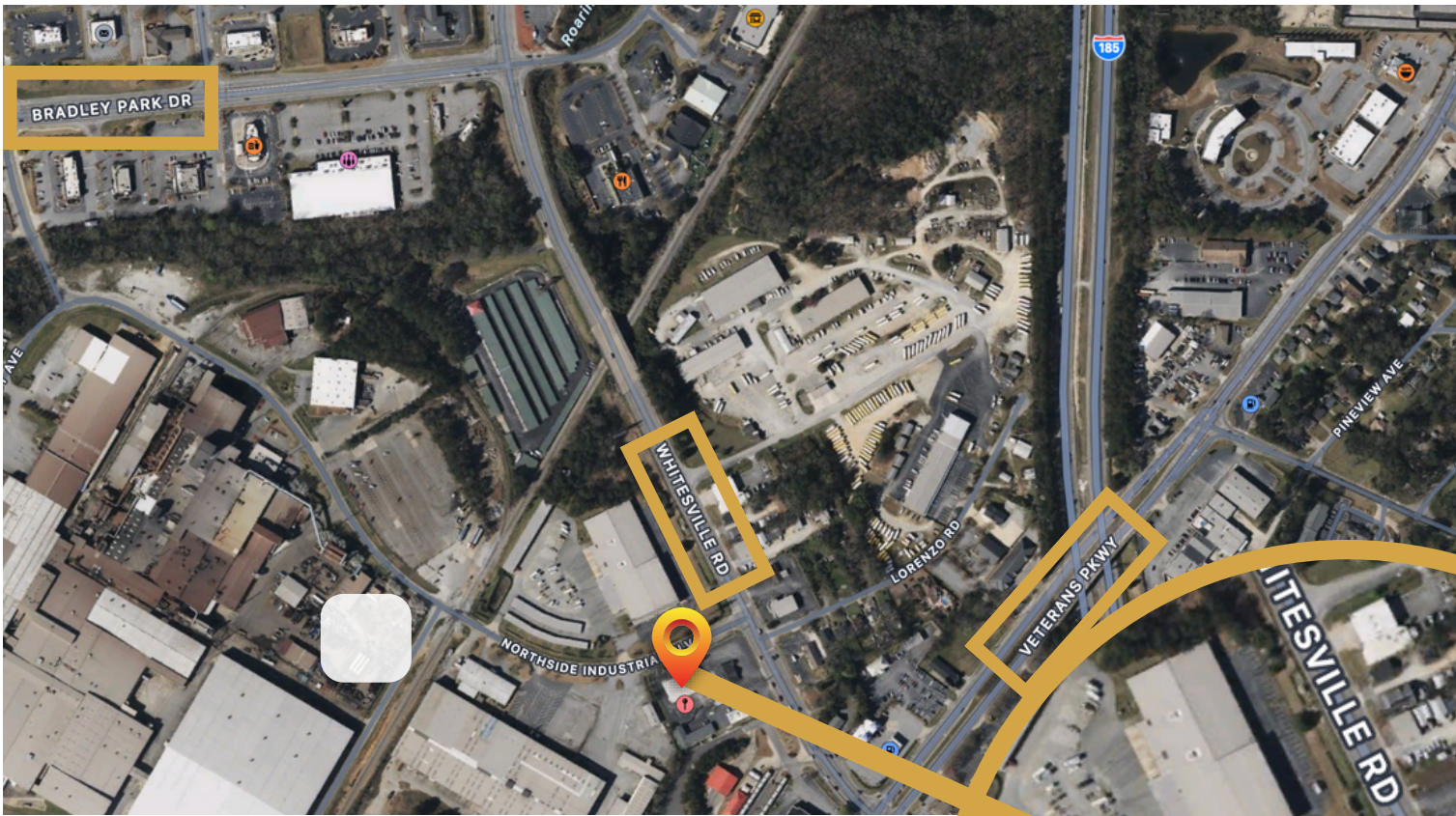


# AVAILABLE SPACE



\*The land acreage and/or building square footage was obtained from the County's Geographical Information System or other electronic resources. For exact square footage and/or acreage, we recommend that prior to purchase, a prospective Buyer/Tenant obtain a boundary survey or have the building measured professionally.

©2023 Coldwell Banker Real Estate LLC, dba Coldwell Banker Commercial Affiliates. All Rights Reserved. Coldwell Banker Real Estate LLC, dba Coldwell Banker Commercial Affiliates fully supports the principles of the Equal Opportunity Act. Each Office is Independently Owned and Operated. Coldwell Banker Commercial and the Coldwell Banker Commercial Logo are registered service marks owned by Coldwell Banker Real Estate LLC, dba Coldwell Banker Commercial Affiliates.



## NEARBY RETAILERS

- Miles To Go
- Walgreens
- Chef Lees
- Hibachi Express
- Zaxbys
- Chickfila
- Publix
- FedEx
- Circle K
- Truist
- Panera
- Starbucks
- Target
- Krystal

ERNEST SMALLMAN IV, CCIM  
c 706-888-6651  
ernie@erniesmallman.com

1025 1st Ave | Columbus, GA 31901 | 706-256-1500

\*The land acreage and/or building square footage was obtained from the County's Geographical Information System or other electronic resources. For exact square footage and/or acreage, we recommend that prior to purchase, a prospective Buyer/Tenant obtain a boundary survey or have the building measured professionally.





4.8  
MILES

TO  
UPTOWN  
COLUMBUS

5.4  
MILES

TO  
PHENIX  
CITY

16  
MILES

TO  
FT MOORE

30  
MILES

TO  
OPELIKA

42  
MILES

TO  
LAGRANGE



ERNEST SMALLMAN IV, CCIM  
c 706-888-6651  
ernie@erniesmallman.com

1025 1st Ave | Columbus, GA 31901 | 706-256-1500



COLDWELL BANKER  
KENNON, PARKER,  
DUNCAN & DAVIS

# CONTACT

FOR MORE INFORMATION



## ERNIE SMALLMAN

1025 1st Ave | Columbus, GA 31901 | 706-888-6651



**706-888-6651 (Cell)**  
**706-256-1500 (Office)**



**ernie@erniesmallmancre.com**



**COLDWELL BANKER**

**KENNON, PARKER,  
DUNCAN & DAVIS**