



RENOVATED CORNER RETAIL OPPORTUNITY NEAR S CLAIBORNE AVE

3039 GENERAL TAYLOR ST NEW ORLEANS, LA 70125



OFFERED: FOR SALE

SALE PRICE: \$325,000 (\$165.82/SF)

±1,960 SF

- Features a large retail space, a smaller secondary space, 2 storage rooms, 1 restroom
- Four blocks from the Magnolia Marketplace strip mall
- Seconds from S Claiborne Ave, which sees ±31,825 vehicles per day
- Zoned HU-RD2 - Historic Urban Two-Family Residential District.

CONTACT:

FRANK LOPICCOLO
504.519.7693

800.895.9329 | <https://elifinrealty.com> | June 2026
640 Main St, Suite A, Baton Rouge, LA 70801

Broker of Record, Mathew Laborde; Licensed by the Louisiana, Mississippi, and Ohio Real Estate Commissions. This information has been secured from sources we believe to be reliable, but we make no representations or warranties, expressed or implied, as to the accuracy of the information. References to square footage or age are approximate. Interested parties must verify the information and bears all risk for any inaccuracies.

OFFERING SUMMARY



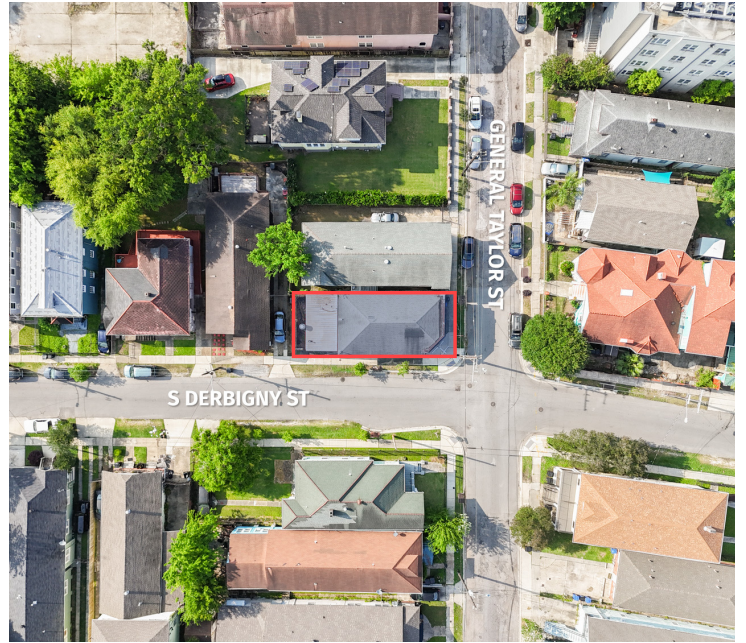
PROPERTY SUMMARY

- Now for sale, 3039 General Taylor St offers a ±1,960 SF retail building at the corner of General Taylor St and S Derbigny St.
- The property features a large main retail area, a smaller secondary space, two storage rooms, and a restroom. Recent renovations have been completed, enhancing the appeal of the space.
- The site is well-suited for a corner store or neighborhood market and is four blocks from Magnolia Marketplace, home to businesses such as Raising Cane's, Michaels, PetSmart, and Ulta Beauty.
- Located seconds from S Claiborne Ave, which sees ±31,825 vehicles per day, the site benefits from strong accessibility.
- Zoned HU-RD2 for Historic Urban Two-Family Residential District.

CONTACT:

FRANK LOPICCOLO
504.519.7693

PROPERTY INFORMATION



LOCATION INFORMATION

Street Address	3039 General Taylor St
City, State, Zip	New Orleans, LA 70125
County	Orleans Parish
Market	LA - New Orleans-Metairie MSA
Side Of The Street	East
Road Type	Paved
Nearest Highway	S Claiborne Ave (US 90)
Nearest Airport	Louis Armstrong (MSY)

PROPERTY INFORMATION

Property Type	Retail
Property Subtype	Free Standing Building
Zoning	HU-RD2 - Historic Urban Two-Family Residential District
APN #	614359527
Lot Frontage	±27 ft
Lot Depth	±75 ft
Corner Property	Yes

BUILDING INFORMATION

Building Size	±1,960 SF
Tenancy	Single
Free Standing	Yes
Parking Type	Street Parking
Number Of Buildings	1

CONTACT:

FRANK LOPICCOLO
504.519.7693

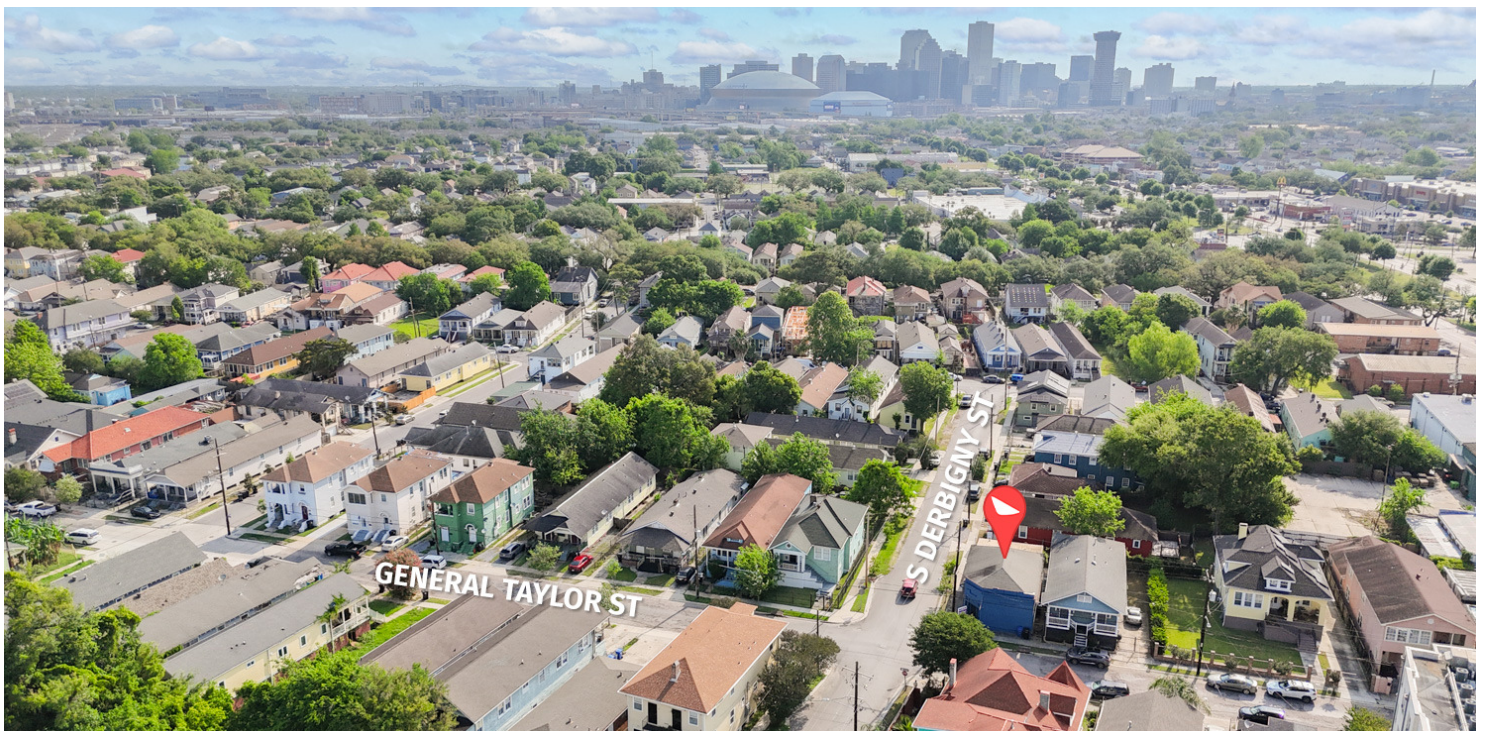
INTERIOR PHOTOS



CONTACT:
FRANK LOPICCOLO
504.519.7693

800.895.9329 | <https://elifinrealty.com> | June 2026
640 Main St, Suite A, Baton Rouge, LA 70801
Broker of Record, Mathew Laborde; Licensed by the Louisiana, Mississippi, and Ohio Real Estate Commissions. This information has been secured from sources we believe to be reliable, but we make no representations or warranties, expressed or implied, as to the accuracy of the information. References to square footage or age are approximate. Interested parties must verify the information and bears all risk for any inaccuracies.

AERIAL PHOTOS



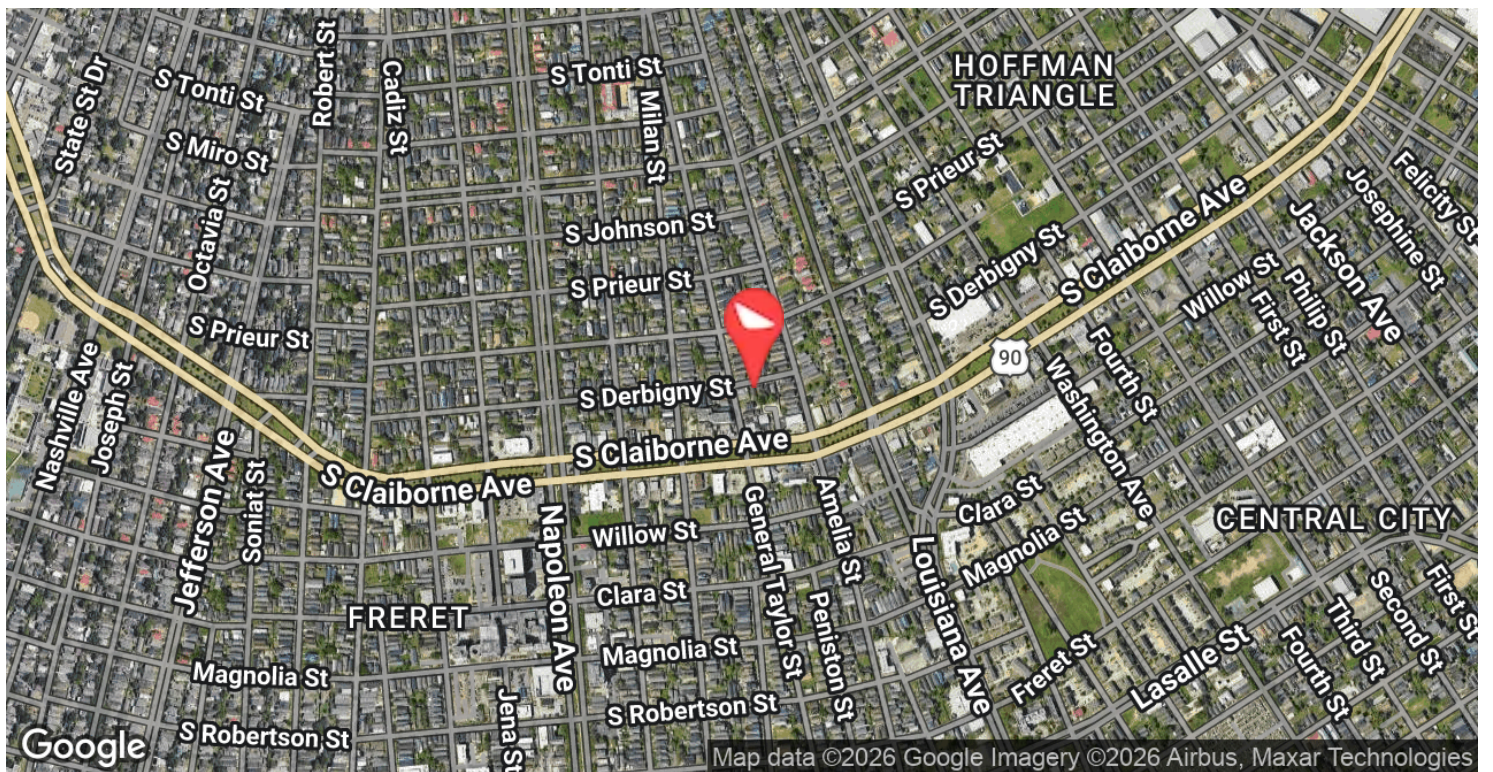
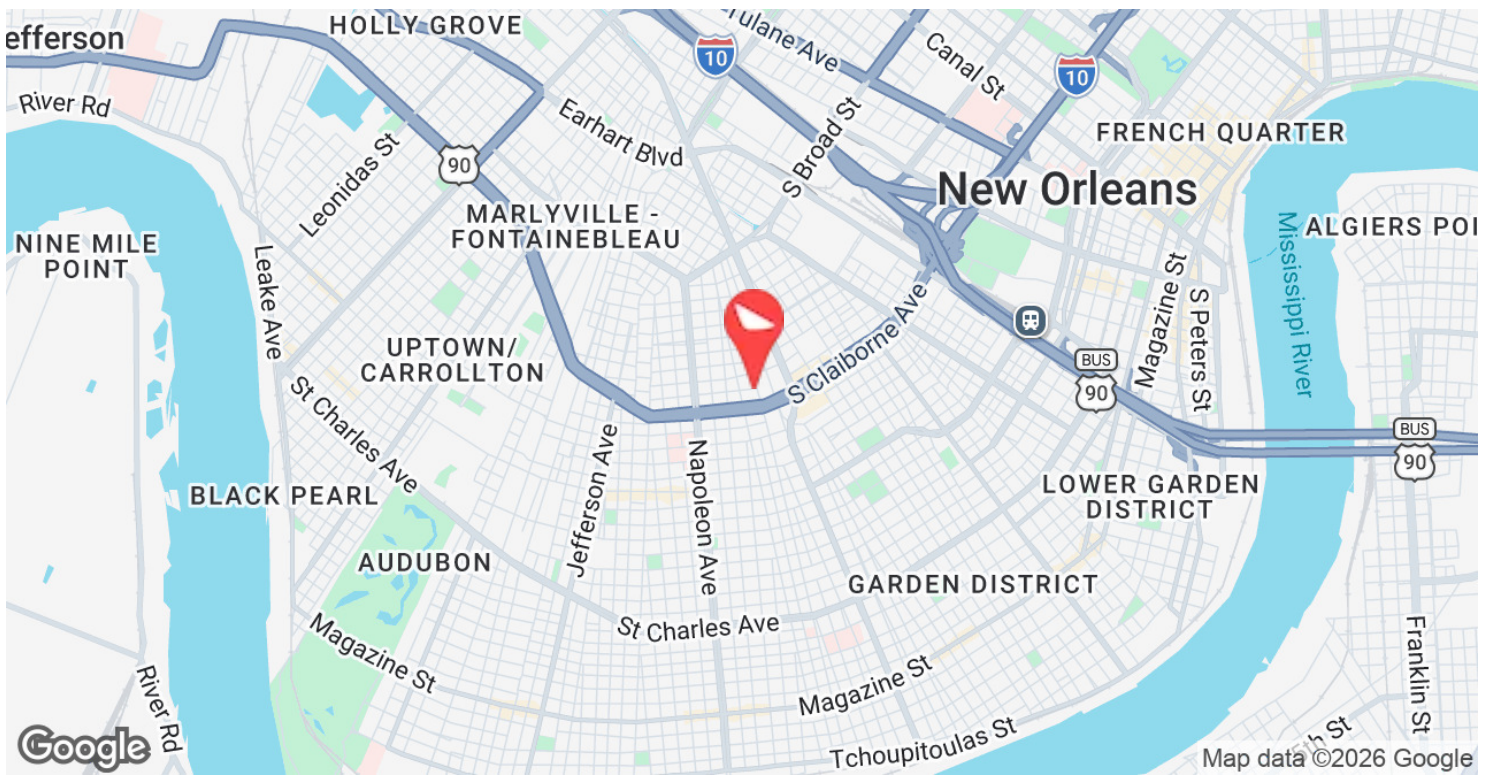
CONTACT:
FRANK LOPICCOLO
504.519.7693

800.895.9329 | <https://elifinrealty.com> | June 2026

640 Main St, Suite A, Baton Rouge, LA 70801

Broker of Record, Mathew Laborde; Licensed by the Louisiana, Mississippi, and Ohio Real Estate Commissions. This information has been secured from sources we believe to be reliable, but we make no representations or warranties, expressed or implied, as to the accuracy of the information. References to square footage or age are approximate. Interested parties must verify the information and bears all risk for any inaccuracies.

LOCATION MAPS



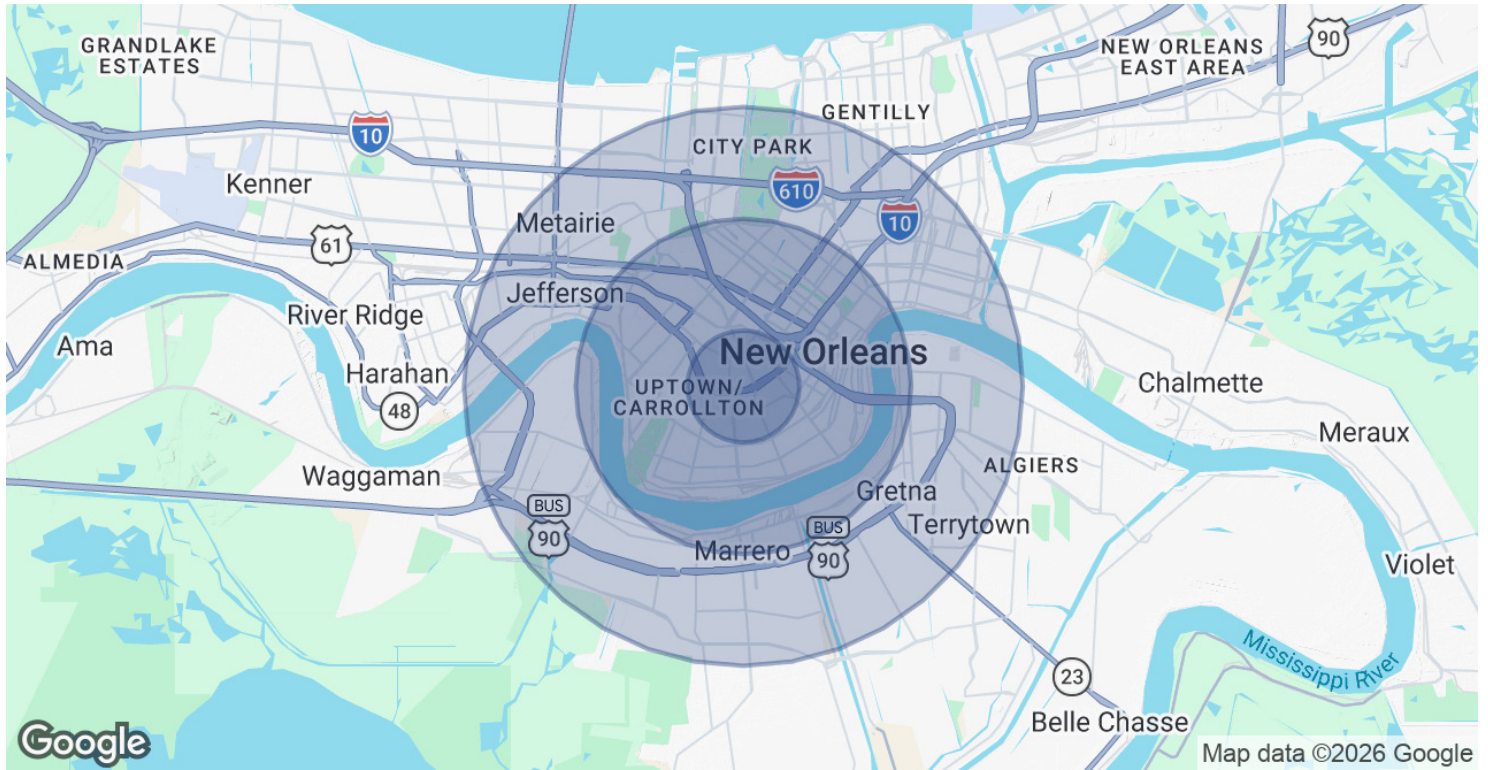
CONTACT:

FRANK LOPICCOLO
504.519.7693

800.895.9329 | <https://elifinrealty.com> | June 2026

640 Main St, Suite A, Baton Rouge, LA 70801
Broker of Record, Mathew Laborde; Licensed by the Louisiana, Mississippi, and Ohio Real Estate Commissions. This information has been secured from sources we believe to be reliable, but we make no representations or warranties, expressed or implied, as to the accuracy of the information. References to square footage or age are approximate. Interested parties must verify the information and bears all risk for any inaccuracies.

DEMOGRAPHICS MAP & REPORT



POPULATION

	1 MILE	3 MILES	5 MILES
Total Population	29,994	160,523	348,665
Average Age	36.1	39.2	40.0
Average Age (Male)	34.6	38.6	38.6
Average Age (Female)	37.4	39.7	41.6

HOUSEHOLDS & INCOME

	1 MILE	3 MILES	5 MILES
Total Households	11,565	69,521	152,101
# of Persons per HH	2.6	2.3	2.3
Average HH Income	\$91,662	\$107,022	\$91,879
Average House Value	\$417,493	\$537,836	\$406,980

2023 American Community Survey (ACS)

CONTACT:

FRANK LOPICCOLO
504.519.7693

