



### 27116 Grummand Avenue Tea, SD 57064

#### PROPERTY HIGHLIGHTS

- Industrial warehouse for lease
- 6,624 SF of heated shop space (Reznor)
- 4 (12 x 12) overhead doors
- 3 phase power
- Side wall height ranging from 12' - 16'
- Zoning: Light Industrial
- Includes office space with 6 offices and a large reception desk
- Floor drains
- 15,000 SF of outdoor storage available (negotiable)

#### LOCATION DESCRIPTION

Easy access to I-29/Tea Exit  
 Area Neighbors: Casey's, Marv Skie - Lincoln County Airport, Weller Brother's Landscape Professionals, Starbucks, Glass Doctor

Lease Rate	<b>\$5,000.00 PER MONTH GROSS + UTILITIES</b>
Lot Size	<b>1.18 AC (51,401 SF)</b>
Suite Size	<b>7,378 SF</b>



**BRODY ETRHEIM**  
 Broker Associate  
 betrheim@naisiouxfalls.com  
 605.251.7625

2500 W. 49th St. Suite 100  
 Sioux Falls, SD 57105  
 605.357.7100  
 naisiouxfalls.com

# PHOTOS

SKY HAVEN SHOP

27116 Grummand Avenue, Tea, SD 57064

FOR LEASE

Industrial Property



# ADDITIONAL PHOTOS

SKY HAVEN SHOP

27116 Grummand Avenue, Tea, SD 57064

FOR LEASE

Industrial Property



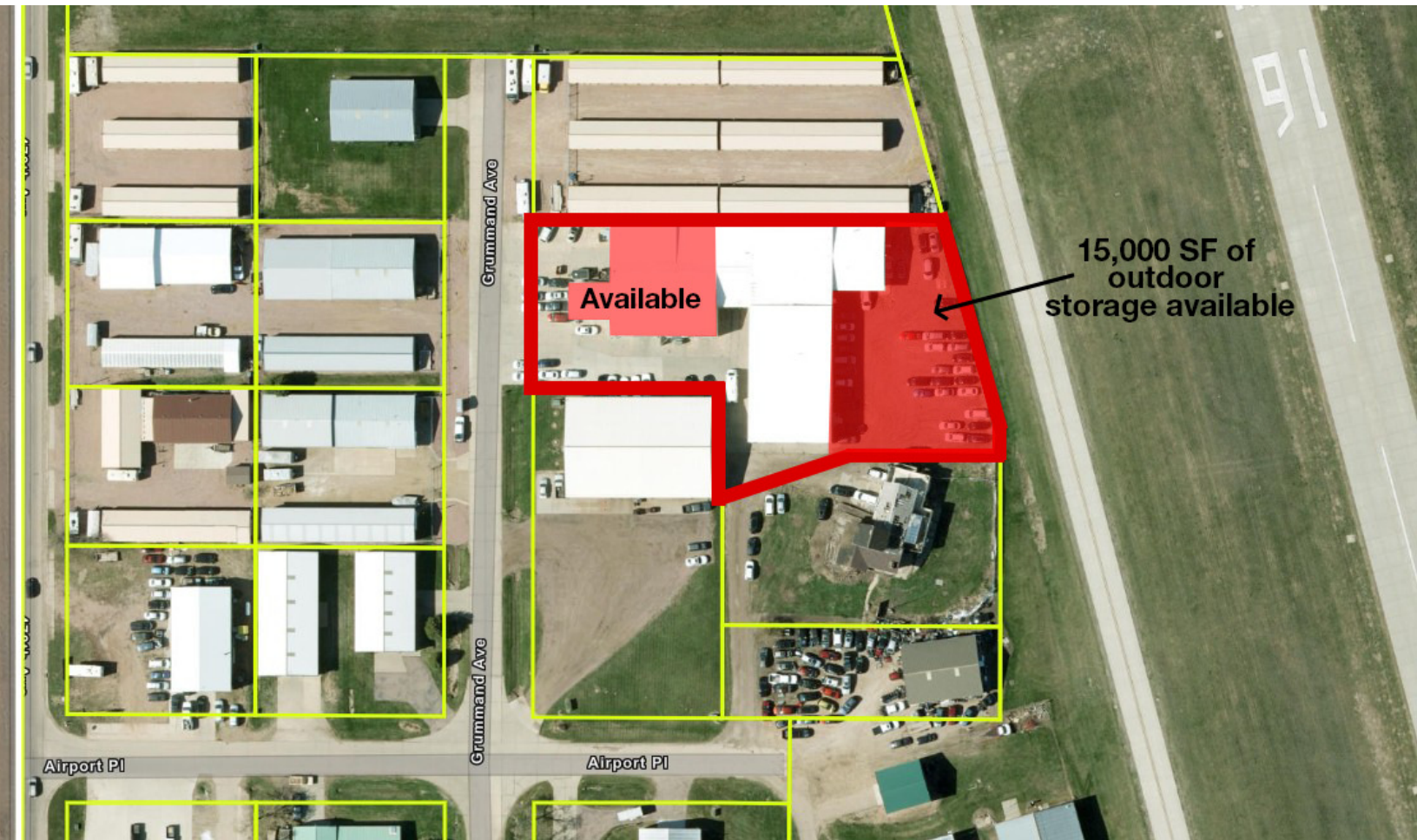
# PARCEL

SKY HAVEN SHOP

27116 Grummand Avenue, Tea, SD 57064

FOR LEASE

Industrial Property



# LOCATION MAP

## SKY HAVEN SHOP

27116 Grummand Avenue, Tea, SD 57064

FOR LEASE

Industrial Property



Google