



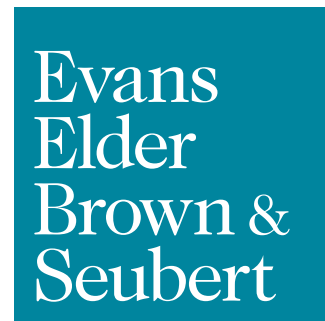
FOR LEASE

Ground Floor Office Space

2350 Oakmont Way
Eugene OR 97401

SUITE 105 | AVAILABLE JUNE 1ST 2026

- Approximately 3,520 square feet
- Space includes open work areas, large conference room, break room, storage area, reception area, server room and two private rest rooms.
- Accessible via the common area lobby as well as directly from the parking lot.
- Highly desirable Oakway Center location.
- \$1.80/sf per month, fully serviced



COMMERCIAL REAL ESTATE

CONTACT

Stephanie Seubert
stephanie@eebcre.com

Alan Evans
alan@eebcre.com

541.345.4860

Licensed in the State of Oregon.

Suite 105

2350 Oakmont Way | 105 | Eugene OR 97401

Evans
Elder
Brown &
Seubert

COMMERCIAL REAL ESTATE

CONTACT

**Stephanie
Seubert**

stephanie@eebcre.com

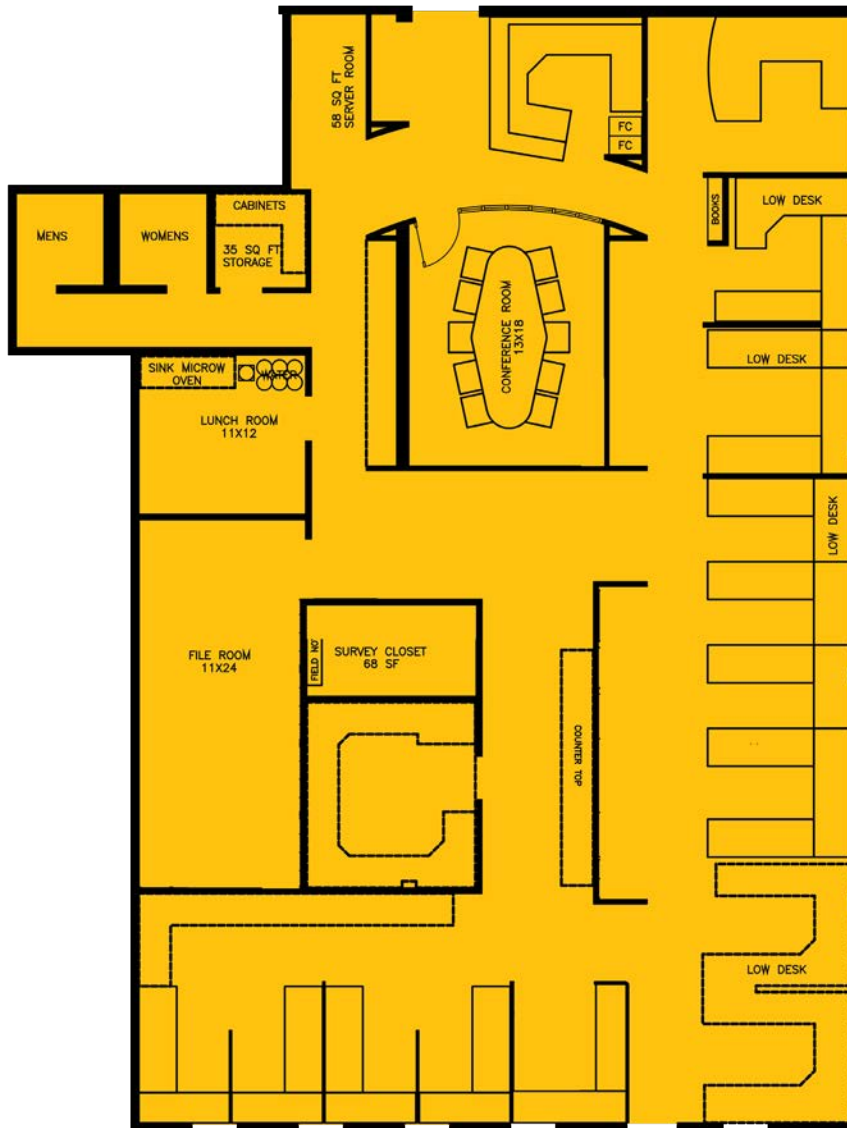
**Alan
Evans**

alan@eebcre.com

541.345.4860

101 East Broadway
Suite #101
Eugene, OR 97401

Licensed in the
State of Oregon.



Oakway Location

2350 Oakmont Way | 105 | Eugene OR 97401

Evans
Elder
Brown &
Seubert

COMMERCIAL REAL ESTATE

CONTACT

**Stephanie
Seubert**

stephanie@eebcre.com

**Alan
Evans**

alan@eebcre.com

541.345.4860

101 East Broadway
Suite #101
Eugene, OR 97401

Licensed in the
State of Oregon.



Oakway Location

2350 Oakmont Way | 105 | Eugene OR 97401

Evans
Elder
Brown &
Seubert

COMMERCIAL REAL ESTATE

CONTACT

**Stephanie
Seubert**

stephanie@eebcre.com

**Alan
Evans**

alan@eebcre.com

541.345.4860

101 East Broadway
Suite #101
Eugene, OR 97401

Licensed in the
State of Oregon.

