

The logo for NAI Commercial, featuring the letters 'NAI' in a bold, sans-serif font with a red diagonal line through the 'A', followed by the word 'Commercial' in a smaller, black, sans-serif font.

**NAI**Commercial

A red diagonal banner in the top right corner containing white text.

**School Space  
9,452 SF**

A photograph of a modern glass skyscraper in an urban setting, with other buildings and construction cranes visible in the background. The building's glass facade reflects the surrounding environment.

**#300 - 605 Robson Street** | Vancouver, BC

**FOR LEASE** | Fully Improved Full Floor School Space

Opportunity to lease a full floor office space in Downtown Vancouver, located on the North West corner of Robson and Seymour Streets. Steps away from the Canada Line, SkyTrain, bus routes, shops, cafés, and restaurants. Well maintained building with on site management.

**Roy Gibbs, LL.B**  
Personal Real Estate Corporation  
Commercial Leasing & Sales  
778 834 4050  
rgibbs@naicommercial.ca

**Chris Oteman, B.Sc.**  
Commercial Leasing & Sales  
604 828 0535  
coteman@naicommercial.ca

**NAI Commercial**  
1075 W Georgia St, Suite 1300  
Vancouver, BC V6E 3C9  
+1 604 683 7535  
naicommercial.ca

# #300 - 605 Robson Street

Vancouver, BC

## Property Details

<b>Unit Size:</b>	9,452 SF
<b>Net Rent:</b>	\$32.00/SF
<b>Additional Rent:</b>	\$22.62/SF (2026)
<b>Availability:</b>	Immediately

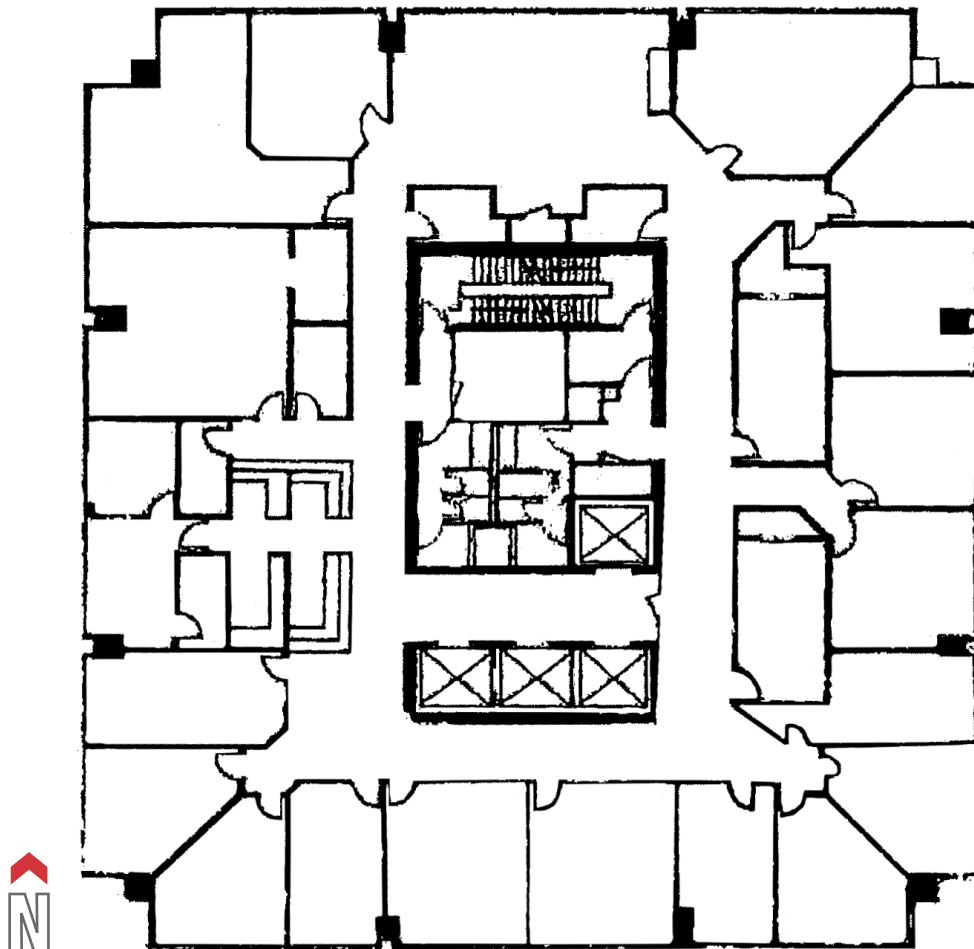
### Premises:

Full floor, fully improved and assembly zoned school space. Existing improvements include reception area, 17 classrooms, 3 offices, washrooms, handicap accessible washroom, storage areas and a kitchen adjacent to a private patio.

### Building Details:

The building is conveniently located close to Skytrain, Pacific Centre, and numerous cafes and restaurants. The building also offers onsite building management, abundant and secure onsite parking, secure bike storage and brand-new end-of-trip facilities including clothes dryer, updated elevators and full height windows providing abundant natural light in all office spaces.

## Floor Plan



### Roy Gibbs, LL.B

Personal Real Estate Corporation  
Commercial Leasing & Sales  
778 834 4050  
rgibbs@naicommercial.ca

### Chris Oteman, B.Sc.

Commercial Leasing & Sales  
604 828 0535  
coteman@naicommercial.ca



**LAW COURTS**

**ROBSON SQUARE**

**VANCOUVER CITY CENTRE**

**PACIFIC CENTRE**

**GRANVILLE**

**605 ROBSON**

**ORPHEUM**

**SEYMOUR ST**

**ROBSON ST**

**VANCOUVER PUBLIC LIBRARY**

**WITHIN 5-MIN WALKING DISTANCE**

- Five Guys
- Meat & Bread
- Blenz Coffee
- Aladdin Café
- Guu Japanese
- Bahar Bakery & Cafe
- H-Mart
- Cafe Monet Bakery
- Tractor Foods
- JINYA Ramen
- JAPADOG
- CIBC Bank
- The Ox Pub
- Chipotle Mexican
- Jollibee
- Starbucks
- Tim Hortons
- Glowbal
- London Drugs
- Pacific Centre
- Hudson's Bay
- Popeyes
- McDonald's
- Dublin Calling Bar
- Staples
- Fable Diner & Bar
- Cafe Medina
- Viet Sub Vietnamese
- Falafel King
- Paramount Fine Foods
- Gong Cha
- Taf's Cafe
- The Fountainhead Pub

**Roy Gibbs, LL.B**  
 Personal Real Estate Corporation  
 Commercial Leasing & Sales  
 778 834 4050  
 rgibbs@naicommercial.ca

**Chris Oteman, B.Sc.**  
 Commercial Leasing & Sales  
 604 828 0535  
 coteman@naicommercial.ca



No warranty or representation, express or implied, is made as to the accuracy of the information contained herein, and the same is submitted subject to errors, omissions, change of price, rental or other conditions, prior sale, lease or financing, or withdrawal without notice, and of any special listing conditions imposed by our principals no warranties or representations are made as to the condition of the property or any hazards contained therein are any to be implied. Aerial image(s) courtesy of Google, Landsat/Copernicus

**NAI Commercial**  
 1075 W Georgia St, Suite 1300  
 Vancouver, BC V6E 3C9  
 +1 604 683 7535  
 naicommercial.ca