

Downtown Boulder Offices for Lease

954 PEARL STREET | BOULDER, CO 80302

SUITE 2

Size: 850 SF

Rate: \$2,830/mo

Available: Now

STAIRWAY TO HEAVEN

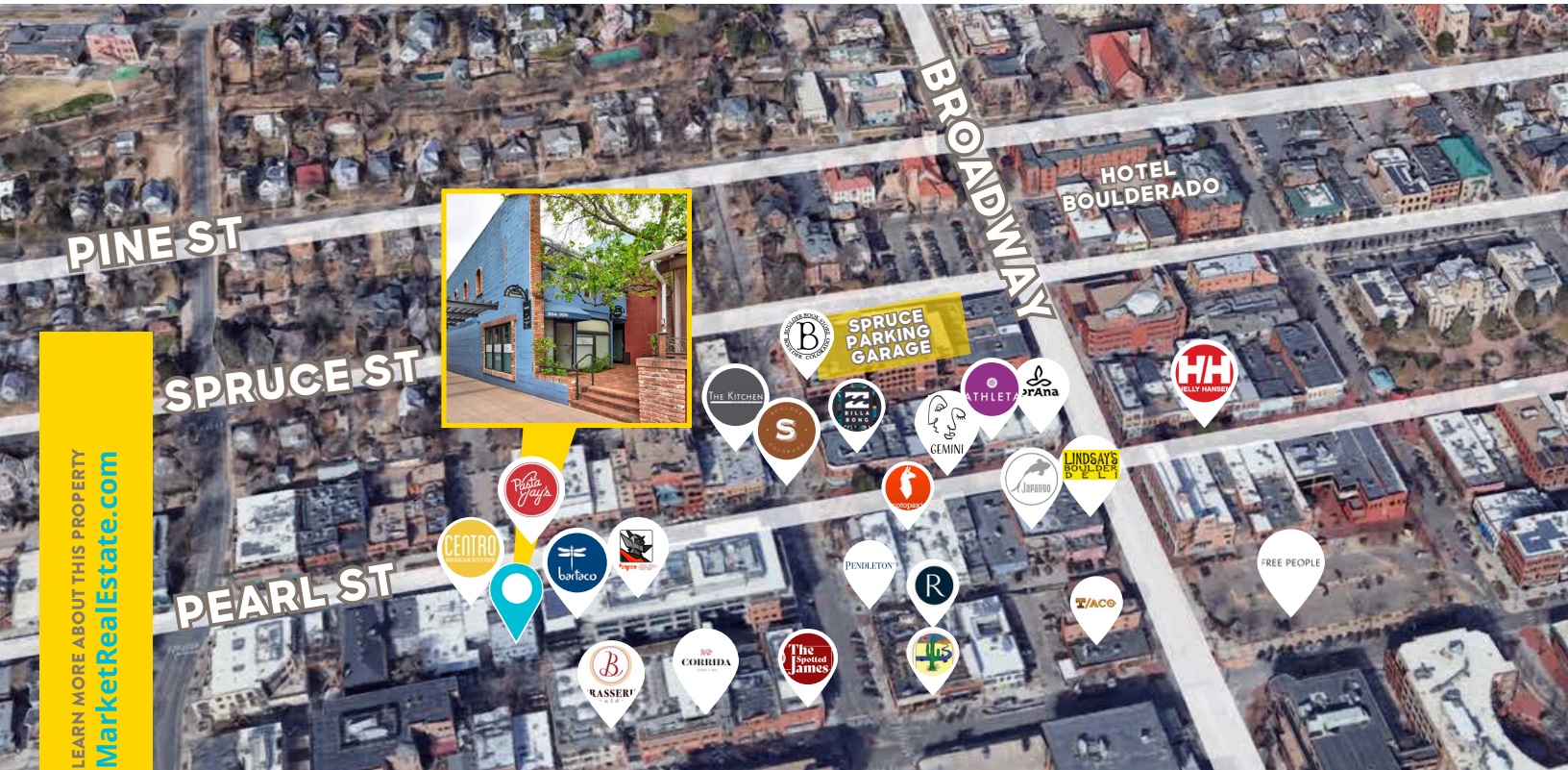
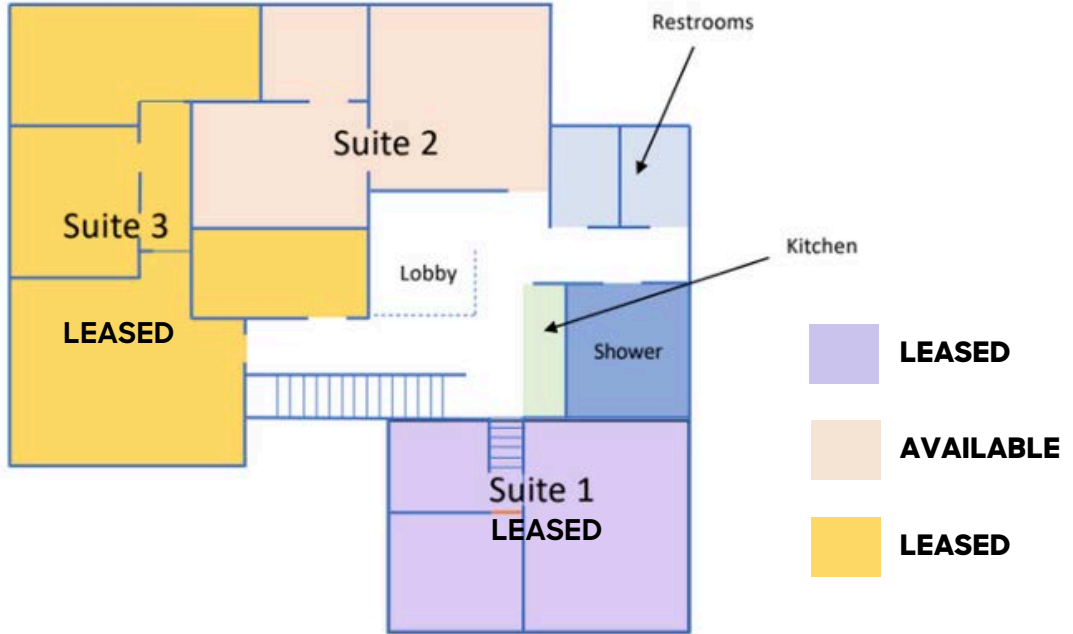
You're strolling the bricks of Boulder's legendary Pearl Street, surrounded by the energy of the city. You stand in front of a bustling hub, taking in the sights and sounds around you. You look up and see a series of windows peering over you. You tell yourself, "One day, that's where I'm going to work." And just like that, your wish is our command.

PROPERTY HIGHLIGHTS:

- Collaborative upstairs office space with shared kitchenette
- Quiet space surrounded by the action of downtown Boulder
- Large windows and skylight
- Parking available at City rates



LEARN MORE ABOUT THIS PROPERTY
[MarketRealEstate.com](https://www.MarketRealEstate.com)



HEIDI SCHAMBER

303 444 4344
Heidi@MarketRealEstate.com

TODD WALSH, CCIM

303 444 5040
Todd@MarketRealEstate.com