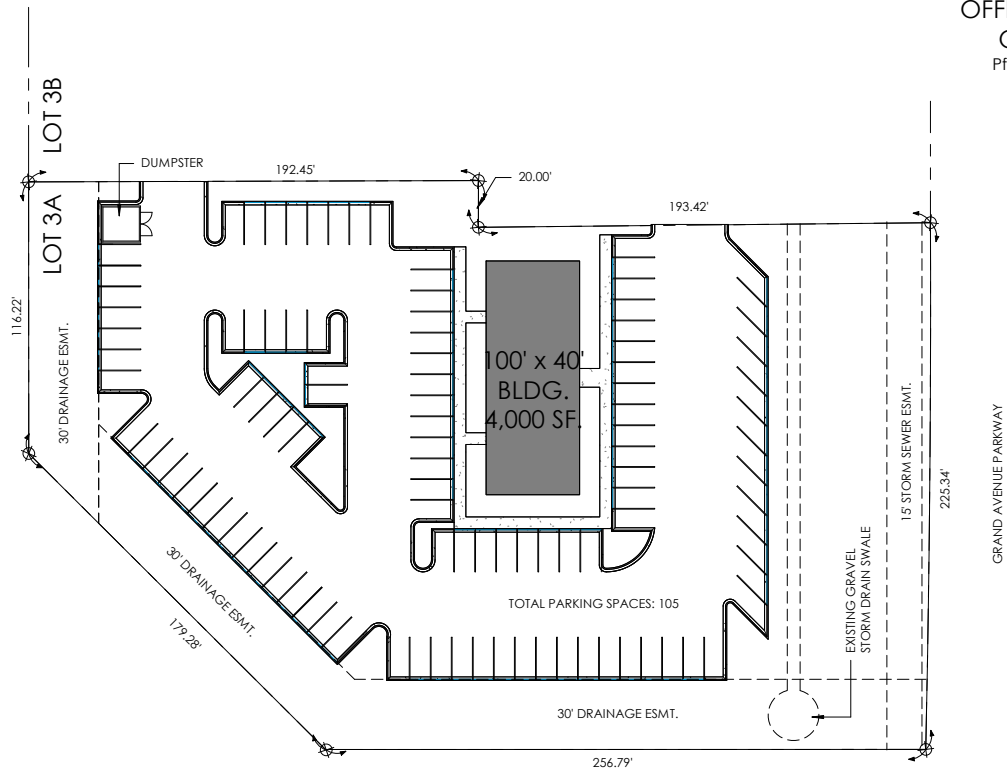


GRAND AVENUE PARKWAY
 OFFICE BUILDING
 OPTION B2
 Pflugerville, Texas



NEGRETE & KOLAR
 ARCHITECTS LLP

11720 N IH-35: AUSTIN TX 78753 | T: (512) 474-4524
 204 E STUBBS ST: EDINBURG TX 78539 | T: (956) 384-0611
 WWW.NEKOARCH.COM



TRUE NORTH PLAN NORTH

GRAND AVENUE PARKWAY -
 OFFICE BUILDING - OPTION B2
 1" = 40'-0"