

775 YARD ST.

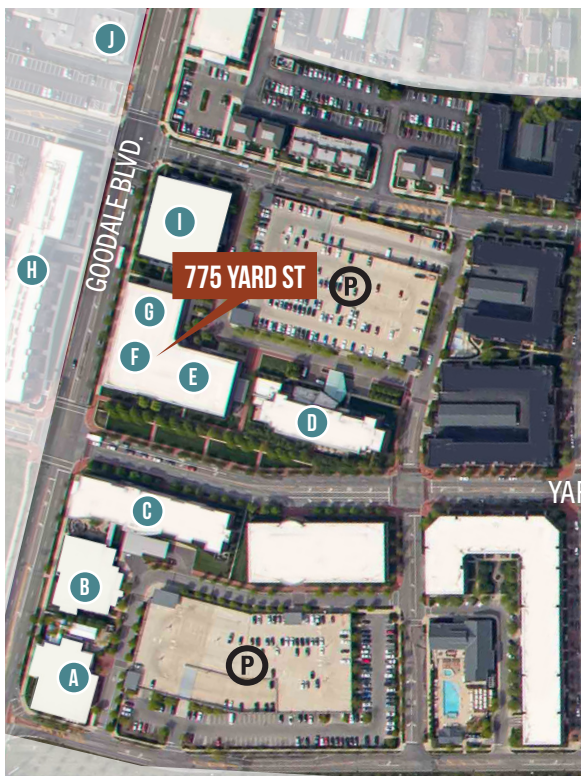
Office Leasing Opportunity, Grandview Heights, Ohio

GRANDVIEW
YARD



RESTAURANTS & RETAIL NEARBY

- A. HOFBRÄUHAUS COLUMBUS
- B. THE GRAND EVENT CENTER
- C. COURTYARD MARRIOTT
- D. HYATT PLACE COLUMBUS OSU
- E. PASTIMES PUB & GRILL
- F. MASSAGE ENVY
- G. DIM SUM
- H. JT'S PIZZA & PUB
- I. LA FITNESS
- J. Highbank Distillery



GRANDVIEW YARD

is a premier business district with an urban vibe and suburban conveniences located just outside downtown Columbus with easy access to I-670 and SR 315. The growing neighborhood is home to some of the region's most successful businesses alongside restaurants, grocery, service retail, hotels and event facilities, and luxury urban living. Modern architecture and walkable streets are complemented by lush green spaces, brick and tree-lined sidewalks and convenient parking.

Building Features:

- Three-story, ±92,000 SF building
- Available suites on the second floor
- Complimentary parking in the adjacent deck
- Nearby amenities include LA Fitness, Pastimes Pub & Grill, JT's Pizza, Chick-Fil-A, Dim Sum, Brekkie Shack, Habaneros, Winans, Panera, Agape Mediterranean, Club Pilates, Giant Eagle, and more.
- Tenants are eligible for as-of-right payroll tax incentives from the City of Grandview Heights.

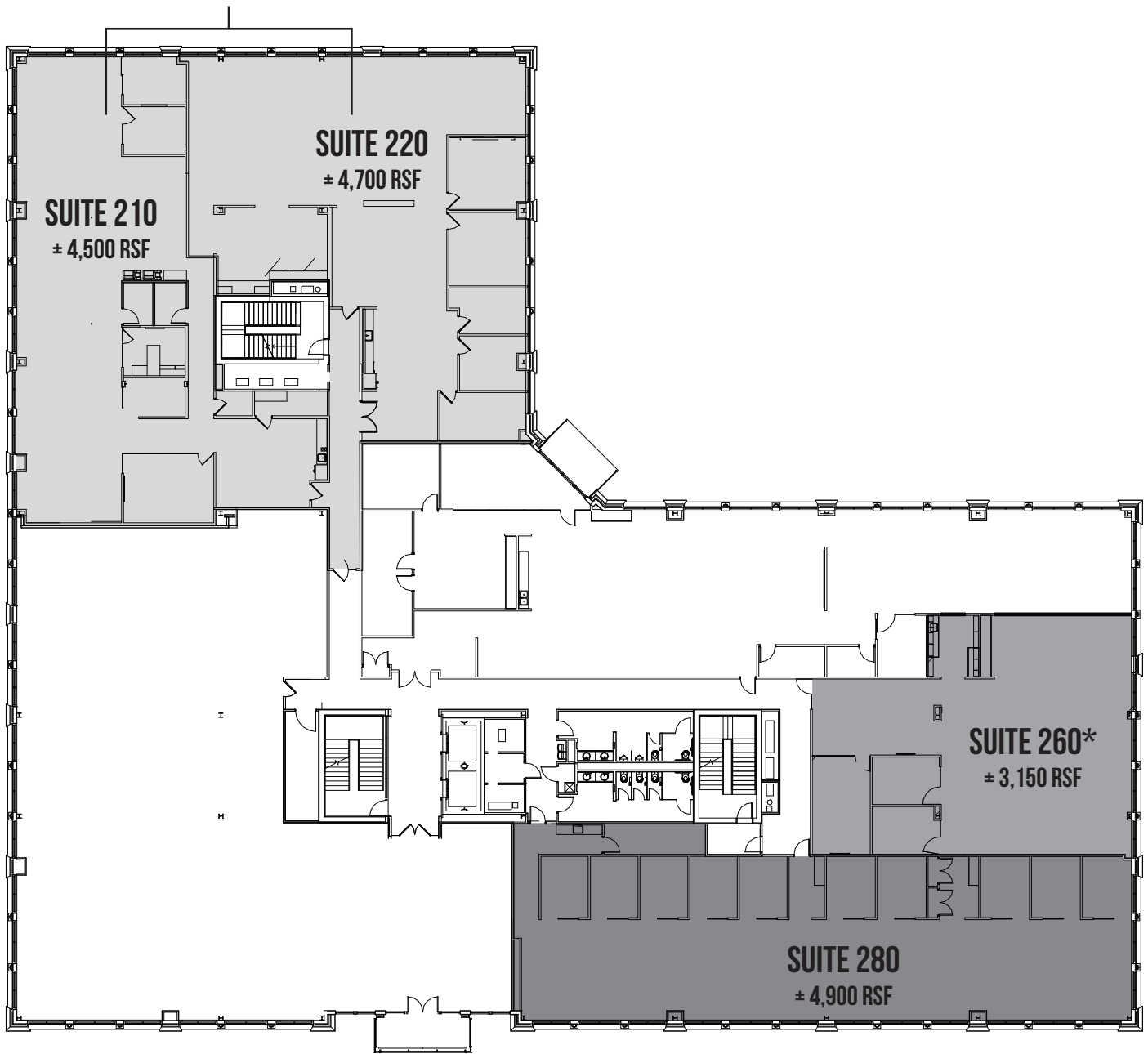


Owned and Developed by
Nationwide Realty Investors

GRANDVIEWYARD.COM

CAN BE COMBINED

± 9,200 RSF



*CURRENTLY LEASED BUT MAY BE AVAILABLE AS A STANDALONE SUITE OR ADDED TO SUITE 280. TO BE FURTHER ADDRESSED.



Owned and Developed by
Nationwide Realty Investors

Nationwide Realty Investors

375 North Front Street, Suite 200
Columbus, Ohio 43215
www.nationwiderealtyinvestors.com

Chris Thompson:
thompscj@nationwide.com | 614.857.2330

Chris Matousek:
matouc1@nationwide.com | 614.857.2330

NEWMARK

150 East Broad Street | Columbus, OH 43215
614.883.1200 | www.nmrk.com

Office Leasing

Wayne Harer: wayne.harer@nmrk.com
Ken Isenbarger: kenneth.isenbarger@nmrk.com

Retail Leasing

Steve Siegel: steve.siegel@nmrk.com

