

DOWNTOWN OFFICE FOR SALE

702 SAN ANTONIO

AUSTIN, TX 78701



LEAD COMMERCIAL



[CLICK HERE TO WATCH THE VIDEO!](#)

Executive Summary

PROPERTY OVERVIEW

The San Antonian is located at 702 San Antonio Street in the heart of Downtown Austin on the historic Bremond Block between 7th Street and 8th Street. This brick structure has a charming European-like character with large arched windows, a relaxing secluded courtyard, and vast views of the Downtown skyline.

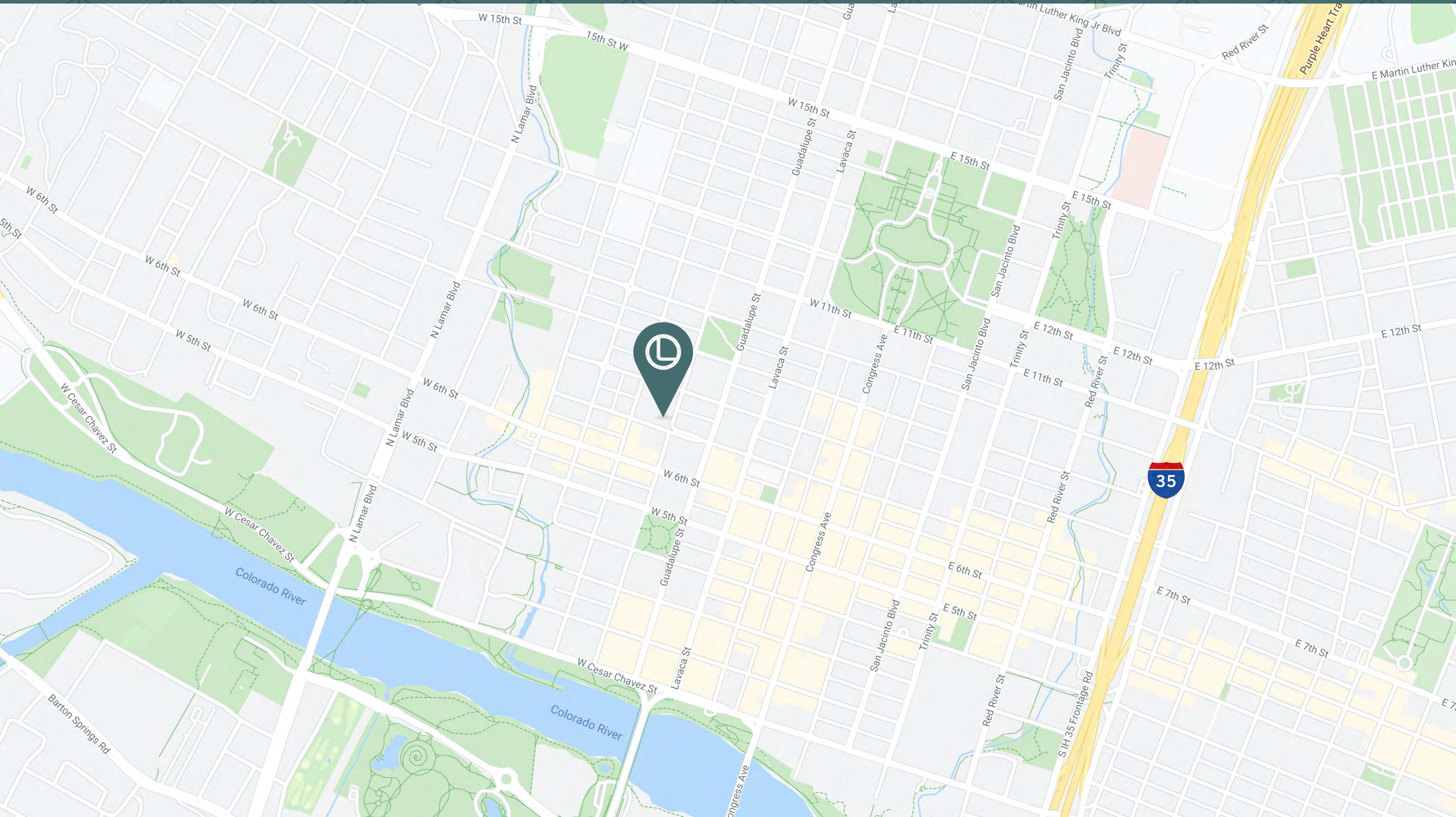
PROPERTY HIGHLIGHTS

- Tranquil neighborhood setting in the heart of Downtown and Historic Bremond Block
- Direct access and convenient parking
- Historic charm and vast Downtown views
- Extraordinary amenities within close proximity to countless restaurants, nightlife, live music venues and pedestrian accessibility to the West Sixth Street Entertainment District, Whole Foods, the Capitol Complex, the Travis County Courthouse, Lady Bird Lake Hike & Bike Trail, Seaholm Redevelopment District, Wooldridge Square, Duncan Park and Shoal Creek.
- Low Taxes! (Historic Exemptions)
- Live/Work Opportunity - Have living space on the first floor or top floor.

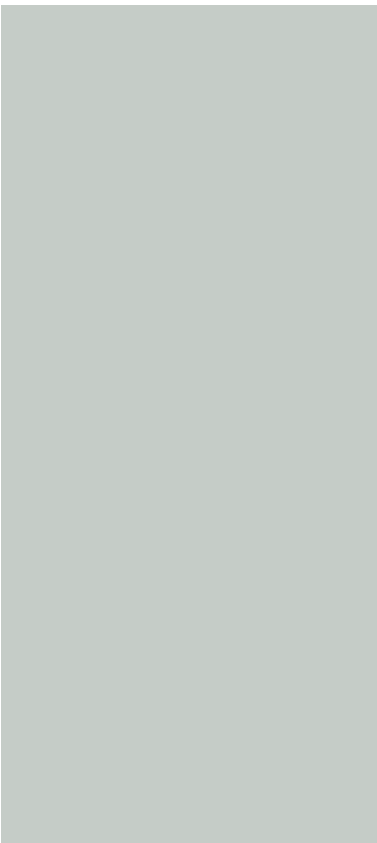
OFFERING SUMMARY

SALE PRICE	Contact Broker	FLOODPLAIN	No
INVESTMENT TYPE	Owner/User	SUBMARKET	Downtown
LEGAL DESCRIPTION	CEN 37.7 FT LOT 4 BLOCK 079 ORIGINAL CITY	NEIGHBORHOOD	Original Austin Neighborhood
YEAR BUILT/RENOVATED	1910/2021	EXEMPTIONS	Historic/HT
CONSTRUCTION TYPE	Masonry/Brick	BUILDING SIZE	7,617 SF
LOT SIZE	2,747 SF	First Floor - Suite 101	805 SF
ZONING	DMU-H-CO	First Floor - Suite 102	374 SF
PARKING	Six (6) Residential Parking Permits Available Through City of Austin	First Floor - Suite 103	663 SF
		Second Floor - Suite 200	2,030 SF
		Third Floor - Suite 300	1,797 SF
		Fourth Floor - Suite 400	1,948 SF

Location Map



Exterior Photos



Aerial



W 7TH STREET

SAN ANTONIO ST

W 6TH STREET

NUECES ST

Aerial



THE
CAPITOL

CONGRESS ST

W 8TH STREET

NUECES ST



SAN ANTONIO ST

W 7TH STREET

W 6TH STREET

Fourth Floor Floor Plan

[CLICK HERE FOR A VIRTUAL TOUR!](#)



Fourth Floor Photos



Third Floor Floor Plan

[CLICK HERE FOR A VIRTUAL TOUR!](#)

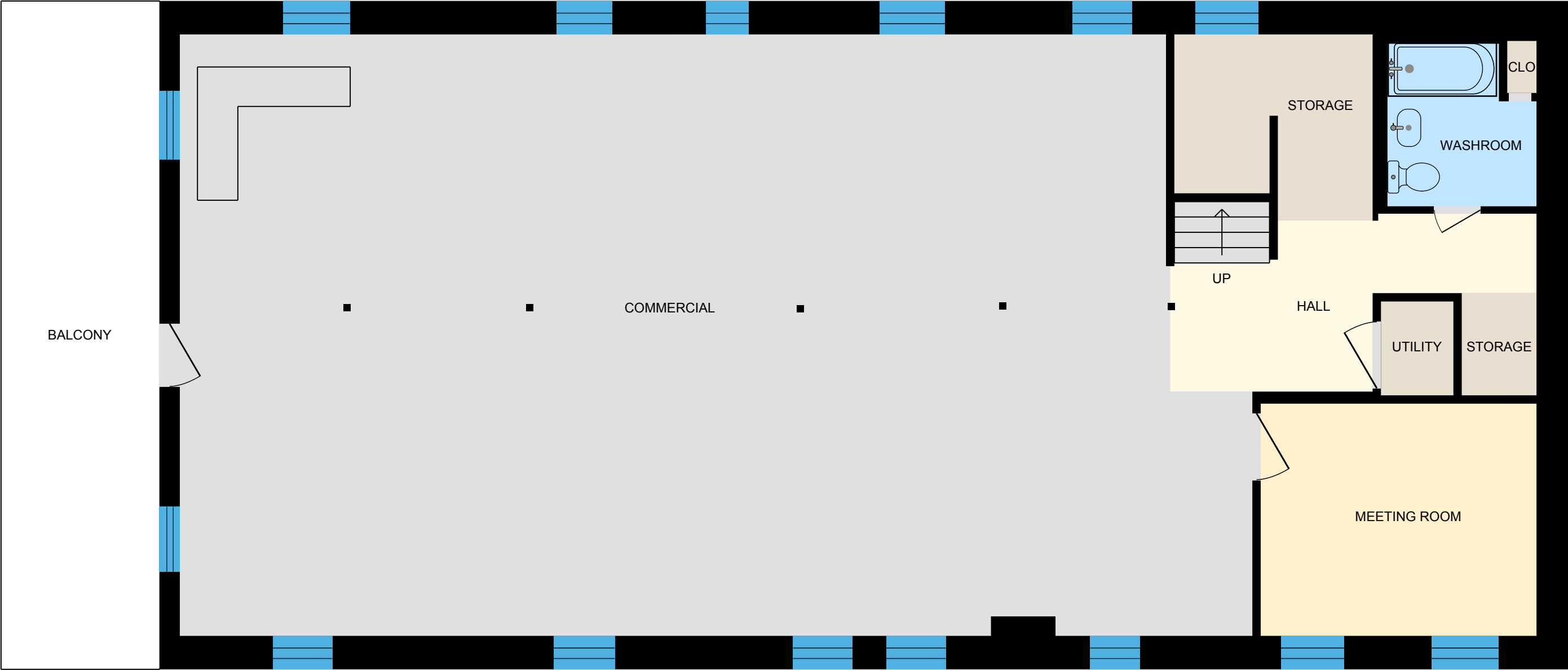


Third Floor Photos



Second Floor Floor Plan

[CLICK HERE FOR A VIRTUAL TOUR!](#)



Second Floor Photos

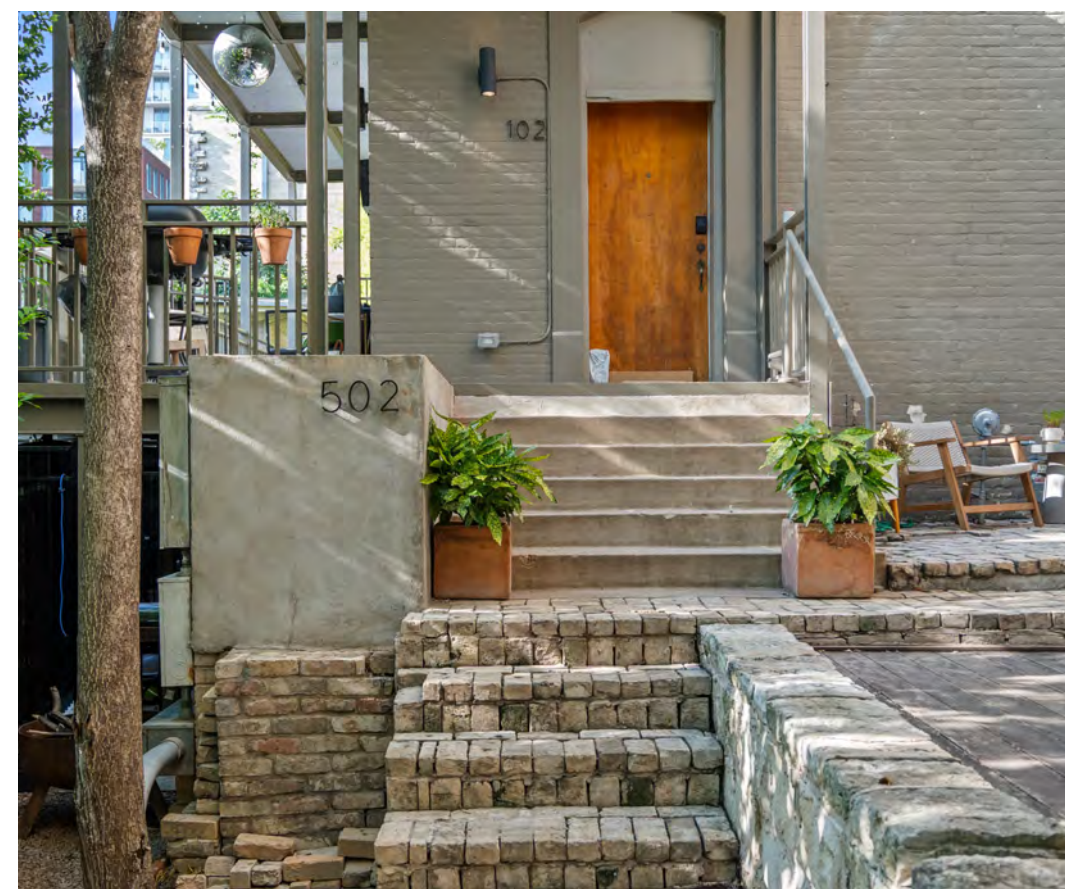
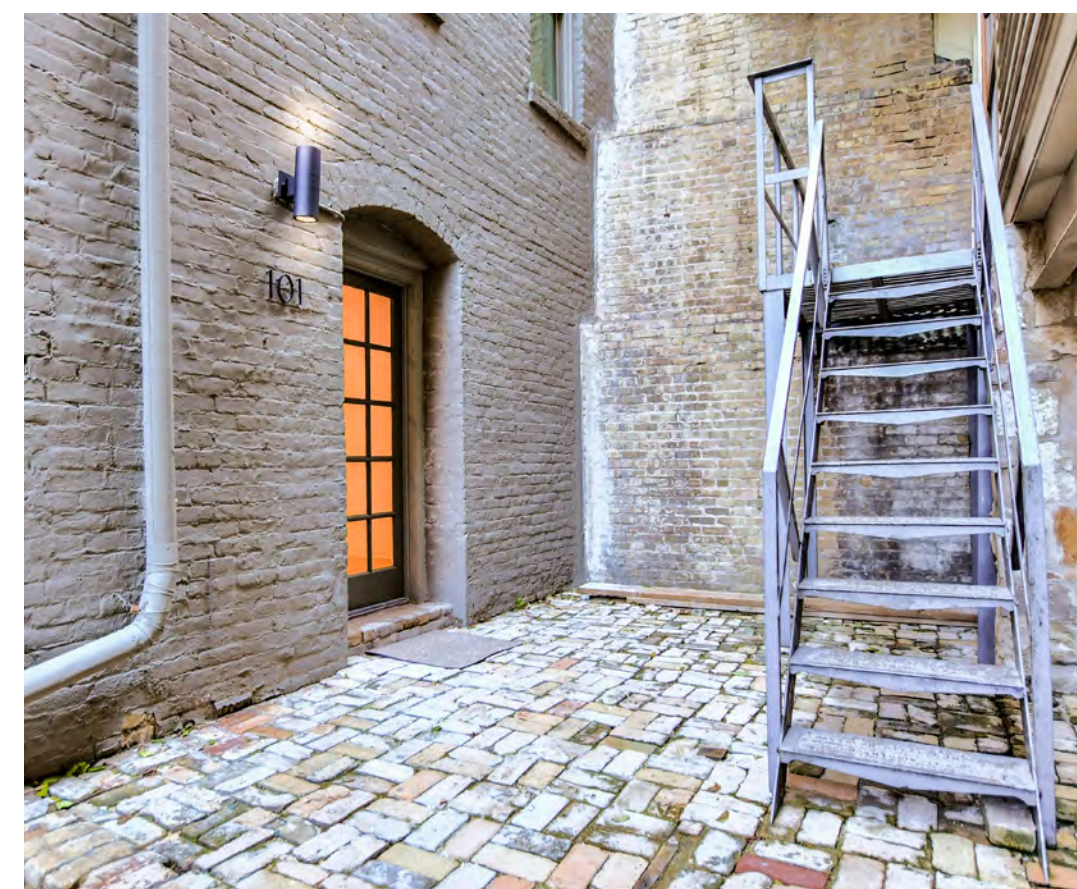


First Floor Floor Plan

[CLICK HERE FOR A VIRTUAL TOUR!](#)

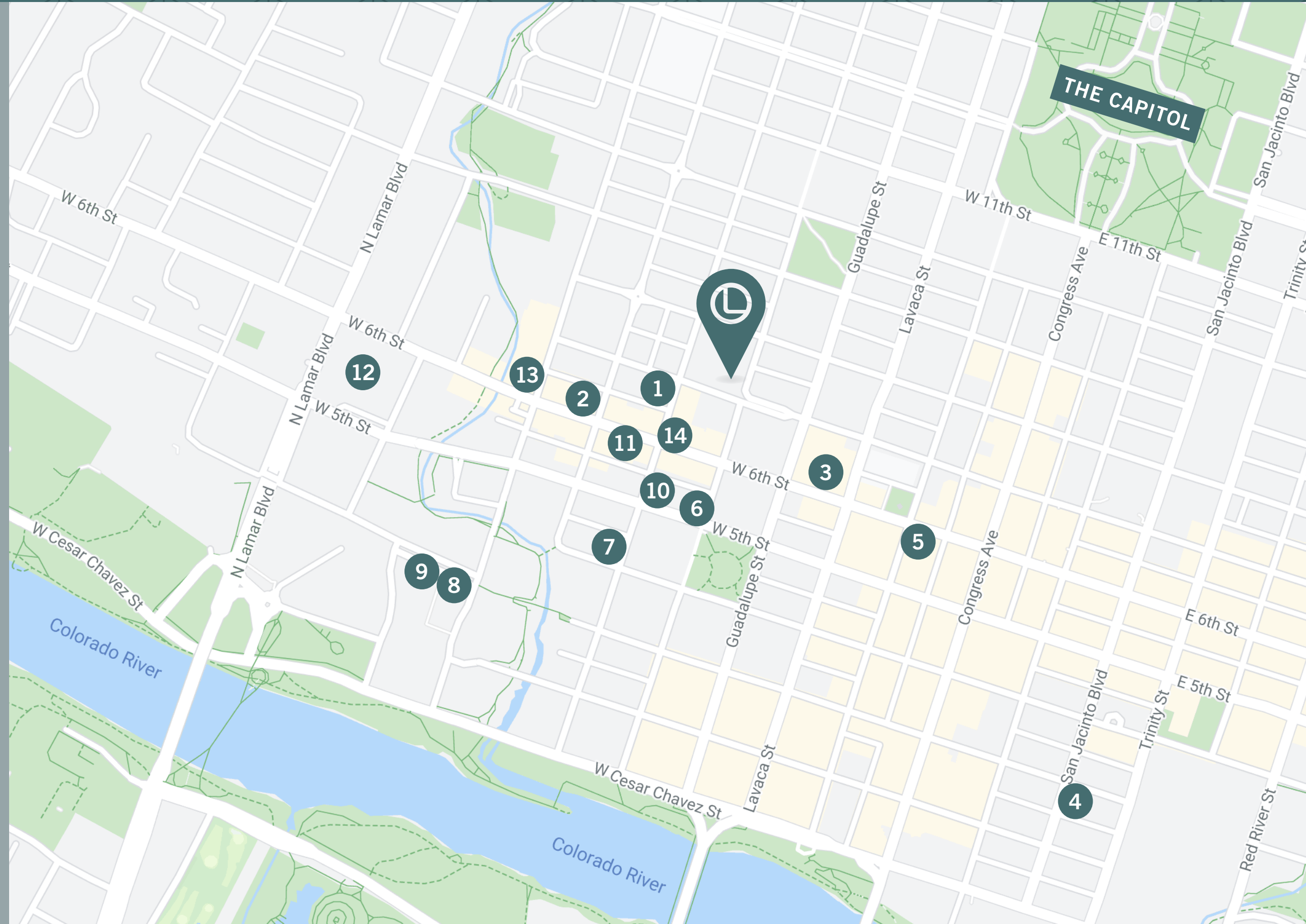


First Floor Photos



Retailer Map

1. Ranch 616
2. Buford's Beer Garden
3. Gloria's
4. Maiko Sushi Lounge
5. Italic
6. WU Chow
7. Juan Pelota
8. True Food Kitchen
9. Trader Joe's
10. Fixe Southern House
11. Walton's
12. Whole Foods
13. The Grove
14. Little Woodrow's





LEADCOMMERCIAL

Tim Mooney

m. 512.658.4916

tim@leadcommercial.com



**2306 Lake Austin Blvd.
Austin, TX 78703
512.467.2222
LeadCommercial.com**

Lead Commercial, LLC - We obtained the information in this package from sources we believe reliable. However, we have not verified its accuracy and make no guarantee, warranty or representation about it. It is submitted subject to the possibility of errors, omissions, change of price, rental or other conditions, or withdrawal without notice. We include projections, opinions, assumptions or estimates for example only, and they may not represent current or future performance of the project. You and your tax and legal advisors should conduct your own investigation of the property.