



**FOR LEASE**

**802 N FANCHER RD**

Spokane Valley, WA 99212

**[View Location](#)**

**Property Key Facts**

**Lease Rate:** \$9.50 SF/YR NNN

**Parcel Number:** 35132.1027

**Total Lot Size:** ±0.68 AC

**Total Building Size:** ±11,756 SF

**Year Built:** 1954/1977

**Zoning:** I-2

**Parking:** 33 Stalls

**Signage:** Monument

**Exclusively listed by:**

**Cory Barbieri**

**President**

**509.344.4901**

**cory.barbieri@g-b.com**

**Bob Spooner**

**Sr Commercial Broker**

**509.999.1959**

**bob.spooner@g-b.com**



# Property Description

Maximize your presence at the high-traffic intersection of Fancher and Broadway with this versatile ±11,756 SF commercial asset. Perfectly positioned for immediate I-90 access, this property is a turnkey solution for an owner-user or a high-potential addition to a leased investment portfolio.

The building has been extensively modernized, featuring a new TPO roof, updated HVAC, 3-phase power, and energy-efficient LED lighting. With fresh carpet, new windows, a robust security system, and available office FF&E, this space is truly move-in ready. High visibility, corner signage, and 33 dedicated parking stalls make this Spokane Valley's premier opportunity for 2026.



Cory Barbieri  
President  
509.344.4901  
cory.barbieri@g-b.com

Bob Spooner  
Sr Commercial Broker  
509.999.1959  
bob.spooner@g-b.com





# Features



Recent Improvements -  
New TPO Roof, HVAC, etc.



33  
Parking Stalls



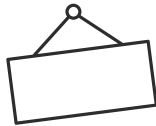
Easy  
Freeway Access



Excellent  
Visibility



Zoning:  
I-2



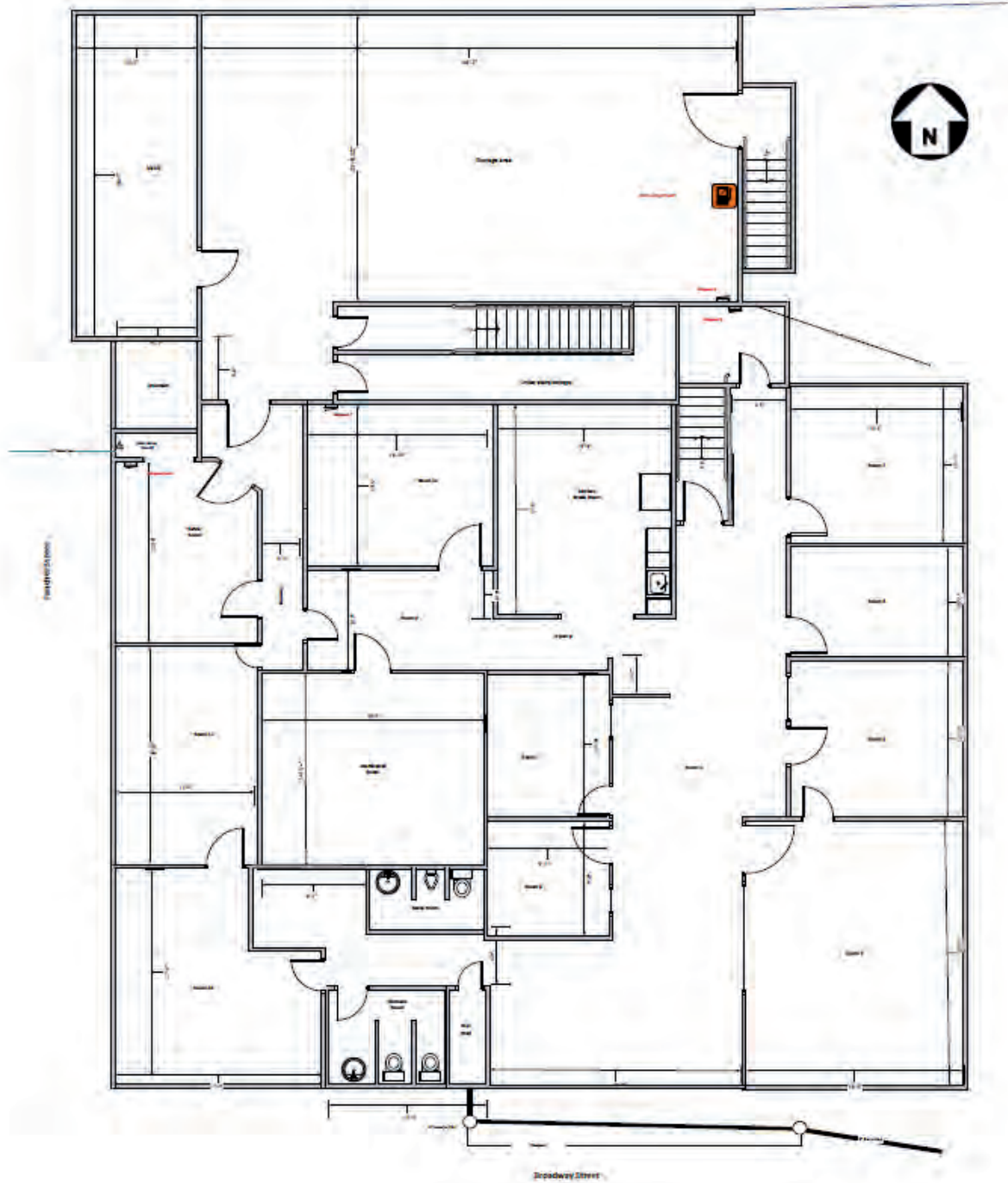
Building  
Signage

Cory Barbieri  
President  
509.344.4901  
cory.barbieri@g-b.com

Bob Spooner  
Sr Commercial Broker  
509.999.1959  
bob.spooner@g-b.com







**Cory Barbieri**  
President  
509.344.4901  
cory.barbieri@g-b.com

**Bob Spooner**  
Sr Commercial Broker  
509.999.1959  
bob.spooner@g-b.com



# LOCATION OVERVIEW

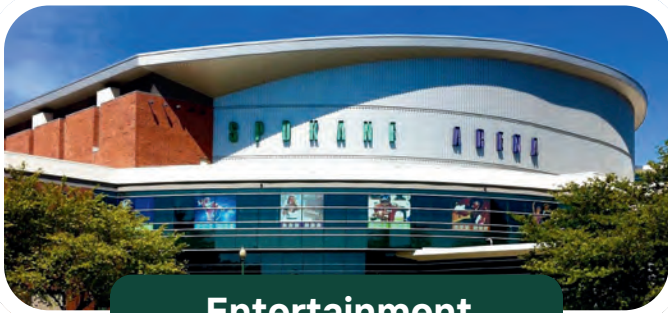
Spokane, Washington



International Events



Outdoor Activities



Entertainment

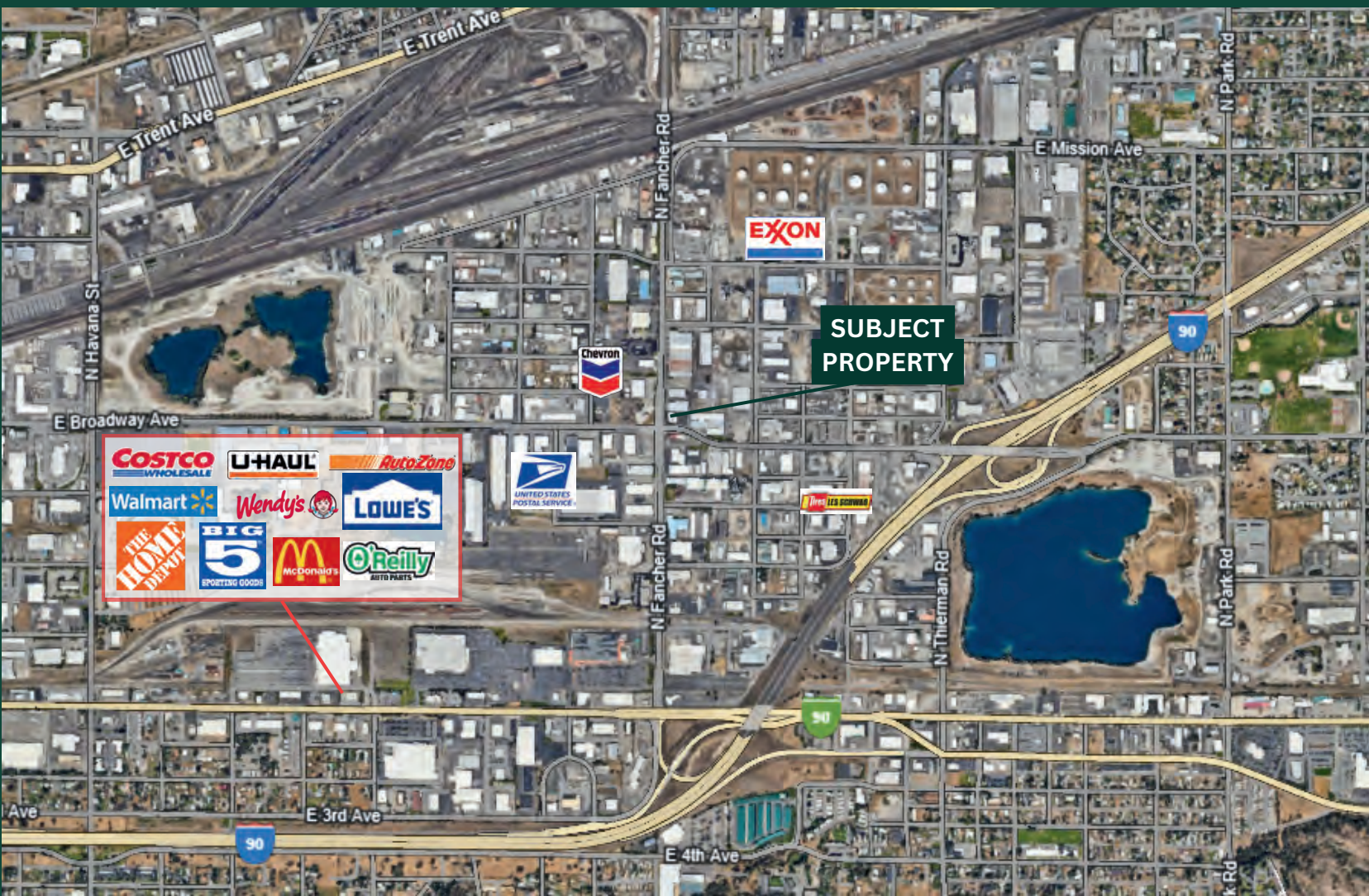
**Spokane, Washington, is the second largest city in the state, located in the eastern part of Washington, along the Spokane River.**

- ✓ Home of the largest 3on3 outdoor basketball tournament, Hoopfest, and Bloomsday, Spokane's iconic annual 12K race.
- ✓ There are 76 lakes and rivers within a 50-mile radius of Downtown Spokane, offering an abundance of outdoor activities.
- ✓ The city hosts a variety of festivals, concerts and shows, including internationally recognized Broadway tours.
- ✓ The Spokane City Line is a brand new 6-mile bus route, connecting Browne's Addition to local universities, like SCC and Gonzaga.

**Cory Barbieri**  
President  
509.344.4901  
cory.barbieri@g-b.com

**Bob Spooner**  
Sr Commercial Broker  
509.999.1959  
bob.spooner@g-b.com





# RETAILER MAP

*General Warranty Disclaimer: G&B makes no warranties, representations, or guarantees as to Seller/Owner's supplied information or the Property itself. G&B disclaims all warranties (express and implied) as to the Property and Seller/Owner's statements/information about the Property.*

*Buyer/Lessee shall not rely on Property information supplied by Seller/Owner or G&B. Buyer/Lessee shall conduct its own due diligence to verify any information and the Property's suitability for specific or general purposes. Copyright information G&B respects the intellectual property of others and its Digital Millennium Copyright Act.*

**Cory Barbieri**  
President  
509.344.4901  
cory.barbieri@g-b.com

**Bob Spooner**  
Sr Commercial Broker  
509.999.1959  
bob.spooner@g-b.com

