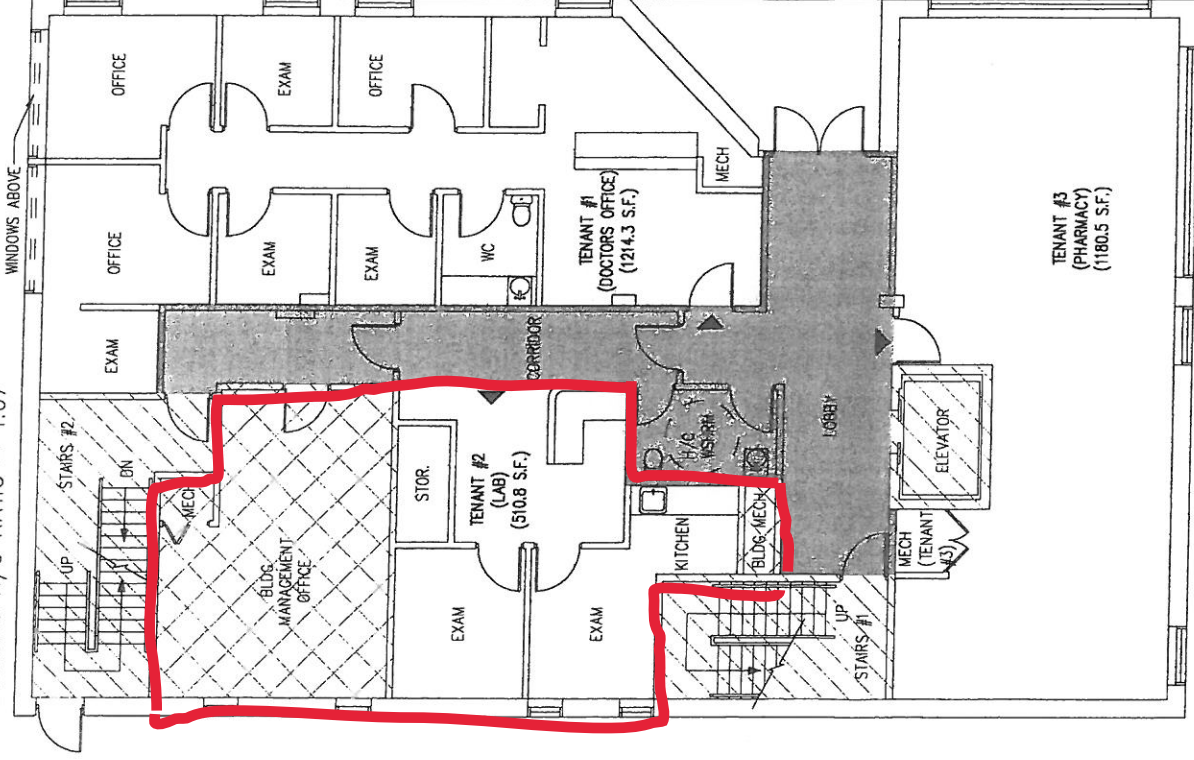


BUILDING R/U RATIO = 1.07



RAI Architect Inc.
 1885 Chippewa Road, Pickering, Ontario, L1W 3V4
 Tel: 905.439.4660 Fax: 905.439.4651
 e-mail: raibarch@raibuild.ca

ISSUE DATE MAY 29/06

APPROVAL DATE

SCALE 1/8" = 1'-0"

DETAIL No. A2.1

DETAIL TITLE
GROUND FLOOR PLAN

JOB NAME & NUMBER
 07-06 WHITBY CLINIC

Whitby Clinic: Summary of Area Calculations

6. Rentable Area:

Location	Space Name	Basic Rentable Area	x Bldg R/U Ratio= (1.07)	Rentable Area
Basement	Tenant # 1: Physiotherapy	1,461.6 sf		1,564.0 sf
	Tenant # 2: X-Ray Lab	1,710.2 sf		1,829.9 sf
	Elect. Room	66.6 sf		
	Mech. Rooms	116.5 sf		
Ground Floor	Tenant # 1: Medical Office	1,134.9 sf		1,214.3 sf
	Tenant # 2: Medical Lab	477.4 sf		510.8 sf
	Tenant # 3: Pharmacy	1,103.3 sf		1,180.5 sf
	Management Office	378.4 sf		
	Mech.	21.0 sf		
Second Floor	Tenant #1: Medical Office	3,275.2 sf		3,504.5 sf
	Jan. Closet	25.8 sf		
Total Basic Rentable Area=				9,770.9 sf
Total Rentable Area=				9,804.0 sf