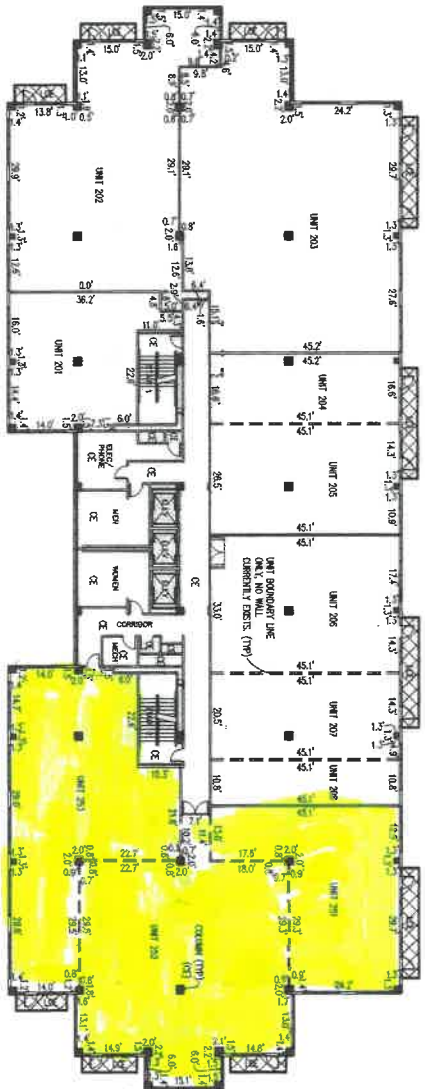


# CYPRESS BAY CONDOMINIUM, A COMMERCIAL CONDOMINIUM, PHASE 1 - REVISED

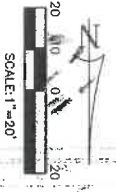
SECTION 19, TOWNSHIP 29 SOUTH, RANGE 18 EAST  
HILLSBOROUGH COUNTY, FLORIDA



REFER TO CONDOMINIUM DOCUMENTS CONCERNING ANY FUTURE UNIT ACCESS DOOR LOCATIONS.

WEST BUILDING  
SECOND FLOOR PLAN

Suite- 250



**NOTES:**

THIS CONDO PLAT PAGE IS RECORDED PURSUANT TO THAT CERTAIN FOURTH AMENDMENT TO THE DECLARATION OF CONDOMINIUM, WHICH ALTERED THE BOUNDARIES OF UNIT 202, UNIT 203 AND 204. THIS CONDO PLAT PAGE IS A REVISION OF THE CONDO PLAT ORIGINALLY RECORDED IN PLAT BOOK 24, PAGE 102, IN CONNECTION WITH THE RECORDING OF THE ORIGINAL DECLARATION OF CONDOMINIUM IN OR BK 17920, PG 1110, AND THEN REVISED BY THOSE CONDO PLAT PAGES RECORDED IN PLAT BOOK 24, PAGE 256, IN CONNECTION WITH THE RECORDING OF THAT SECOND AMENDMENT TO THE DECLARATION OF CONDOMINIUM IN OR BOOK 18023, PG 1959, AND THEN REVISED BY THE CONDO PLAT PAGE RECORDED IN CONDOMINIUM BOOK 25, PAGE 206 IN CONNECTION WITH THE RECORDING OF THAT THIRD AMENDMENT TO THE DECLARATION OF CONDOMINIUM IN OFFICIAL RECORDS BOOK 18439, PAGE 215, ALL IN THE PUBLIC RECORDS OF HILLSBOROUGH COUNTY, FLORIDA.

- NOTES:**
1. ALL IMPROVEMENTS OUTSIDE OF THE UNITS AND NOT LABELED AS "LCE" ARE COMMON ELEMENTS.
  2. ALL COLUMNS WEATHER LOCATED INSIDE OR OUTSIDE OF UNITS ARE COMMON ELEMENTS.
  3. LCE-A IS A LIMITED COMMON ELEMENT FOR THE BENEFIT OF ADJACENT UNIT OR UNITS AS SHOWN.

- FLOOR AND CEILING HEIGHT**
- SECOND FLOOR = 23.16  
CEILING = 32.50

- LEGEND**
- BLDG: BUILDING
  - CE: COMMON ELEMENT
  - EL: ELEVATION
  - ELEC: ELECTRIC
  - ELEV: ELEVATOR
  - LOE: LIMITED COMMON ELEMENT
  - MECH: MECHANICAL
  - O/A: OVERALL
  - ☒ = LIMITED COMMON ELEMENTS
  - = COMMON ELEMENTS

**POLARIS ASSOCIATES INC.**  
 PROFESSIONAL SURVEYING LB 6713  
 2165 SUNNYDALE BOULEVARD SUITE D  
 CLEARWATER, FLORIDA 33765  
 (727) 461-6713  
 PAGE 5 OF 10