



Retail Box - For LEASE
1230 N State Street
Waseca, MN 56093

- Total Available Space 1,000 - 34,000 sq ft (Devisable)
- Base Rent is Negotiable
- CAM / TAX \$1.26 psf / \$1.52 psf
- Major co-tenant Bomgaars Fleet and Farm is a regional draw.
- Space is perfect for retail, medical, self-storage, or educational use.
- Directly across the street from the High School and the Middle School
- Area retailers Walmart, Verizon, McDonald's, Kwik Trip, Dairy Queen, Burger King, and Caribou is under construction.
- Tenant improvements are available

Unit 4 - Available and Devisable – Cash Wise Liquor is Operating



Unit 3 – Waseca Smoke Shop (occupied)



Listed By: Dixon Diebold --- ReUrban, LLC --- 651-343-1889 --- dixon@reurbanrealestate.com



Unit 2 – Monson Eyecare / Kroger Salon – Available

- 2000 sq ft Monson Eyecare
- 1000 sq ft Kroger Salon



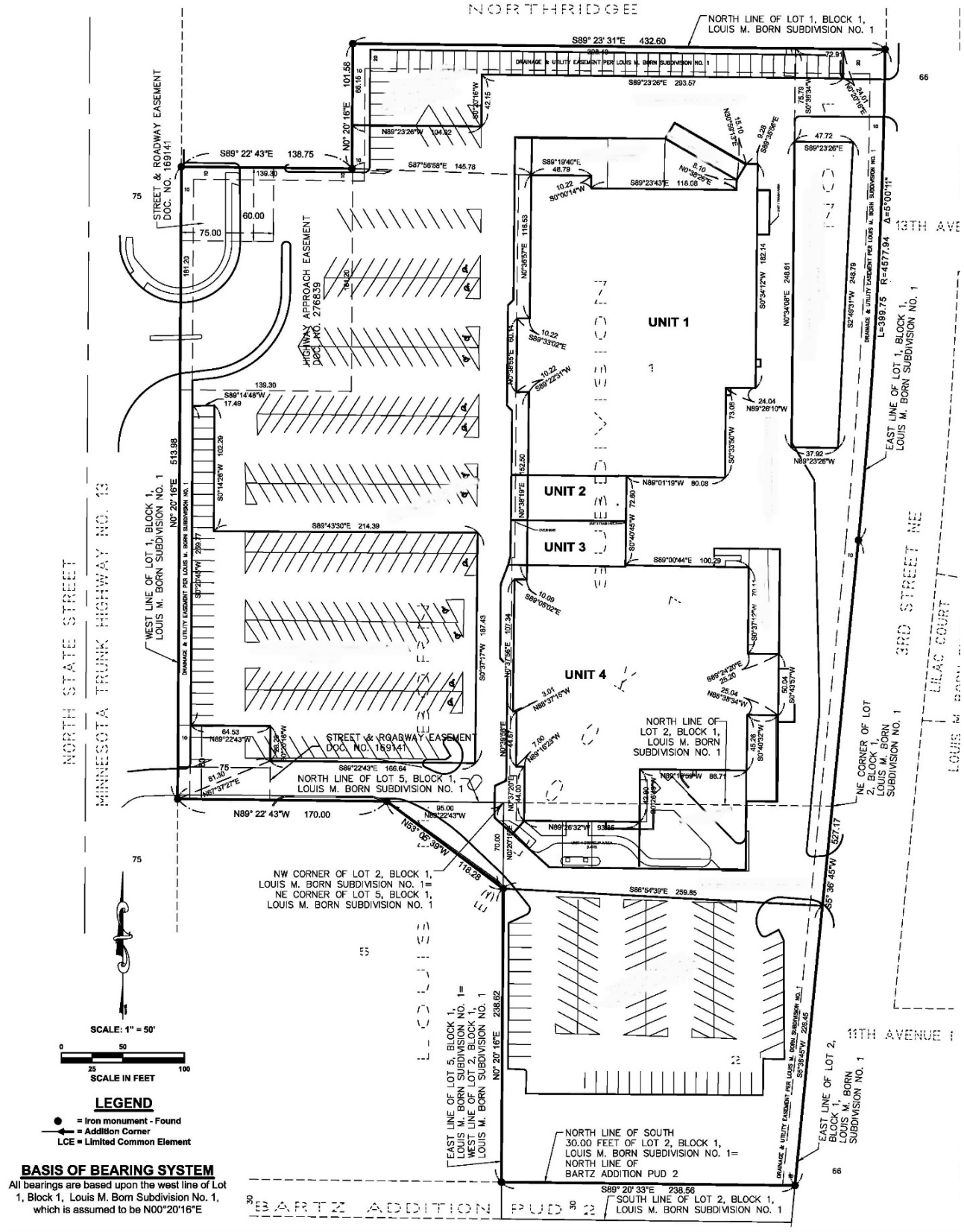
Unit 1 – Anchor Tenant - Bomgaar's Fleet and Farm – Operating



Listed By: Dixon Diebold --- ReUrban, LLC --- 651-343-1889 --- dixon@reurbanrealestate.com



Site Plan – Shopping Center



Listed By: Dixon Diebold --- ReUrban, LLC --- 651-343-1889 --- dixon@reurbanrealestate.com



Floor Plan – Unit 2

