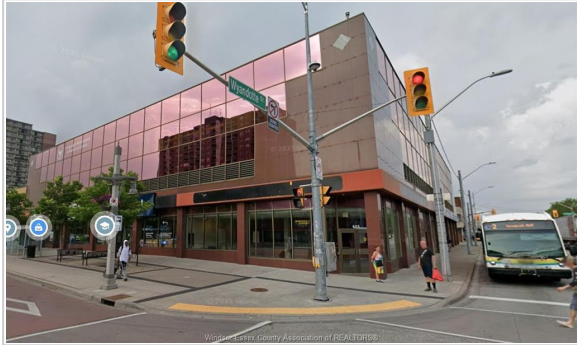




## 605 OUELLETTE, Windsor, Ontario



<b>Lease</b>	\$15
<b>City</b>	WINDSOR, ONTARIO
<b>Address</b>	605 OUELLETTE
<b>Listing ID</b>	25021218
<b>Square Footage</b>	2673
<b>Roof</b>	OTHER, SEE REMARKS
<b>Flooring</b>	CARPETED, CERAMIC OR PORCELAIN
<b>Type</b>	INDUSTRIAL/COMMERCIAL
<b>Status</b>	FOR LEASE

**View Online At** [www.buckinghamrealty.ca/windsor/property/62532](http://www.buckinghamrealty.ca/windsor/property/62532)

**Listing Agents**



**Rob McMaster**  
Sales Representative  
C:(519) 259-3249 / O: (519) 259-3249



**Cameron Paine**  
Broker of Record  
C:(519) 562-3107 / O: (519) 948-8171  
[www.cameronpaine.com](http://www.cameronpaine.com)

## PROPERTY DETAILS

### Extended Features

Attachment Style Multi-Unit Subtype Office(s), Retail Approx. Square Footage 2673 Acreage 0.625 Inclusions Building Insurance, Property Taxes Parking None Amenities Corner Site, High Traffic Location, Public Transportation Ownership Leasehold Building Amenities Natural Light, Other, See Remarks, Window Display Fire Protection Other, See Remarks, Smoke Detector Heating / Cooling Air Conditioned, Forced Air Heating Fuel Natural Gas Utility Power AMPS Utility Water Municipal Water Sewer Sanitary, Storm

### Details

2673 sq.ft. high exposure retail space at the corner of Ouellette and Wyandotte. Common Area Maintenance and Taxes Aprox \$5/ sq.ft .. Call Listing Broker for more info. Previously occupied by money mart. Fascia Sign on both Ouellette and Wyandotte available. Other Tenants in the building include Red Apple, College Boreal and the Employment Assessment Office.



## IMAGE GALLERY



---

---

---

---

---



---

---

---

---

---



---

---

---

---

---



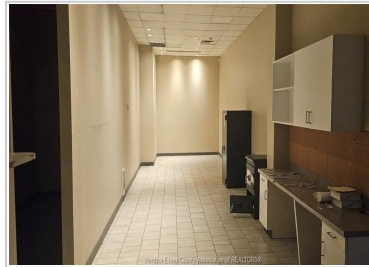
---

---

---

---

---



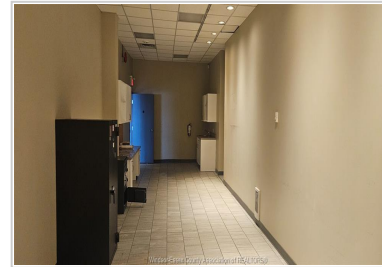
---

---

---

---

---



---

---

---

---

---