



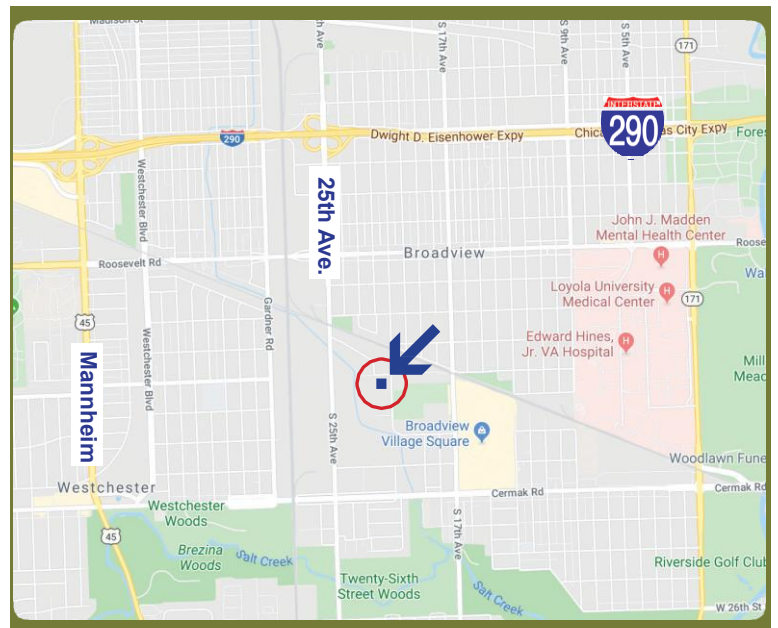
2150 Parkes Dr. ~ Heavy Power

49,959 SF

AGENT
Peter Balyeat
PHONE
773.307.5540
EMAIL
peterb@kormanlederer.com

AGENT
Harley Korman
PHONE
847.205.4364
EMAIL
hkorman@kormanlederer.com

- 3,000 square foot office
- 18' ceiling height
- Three (3) interior docks
- One (1) drive-in door
- Ample parking
- Two Services
400 Amps @ 240v
2,500 Amps @ 480v
- Minutes from I-290

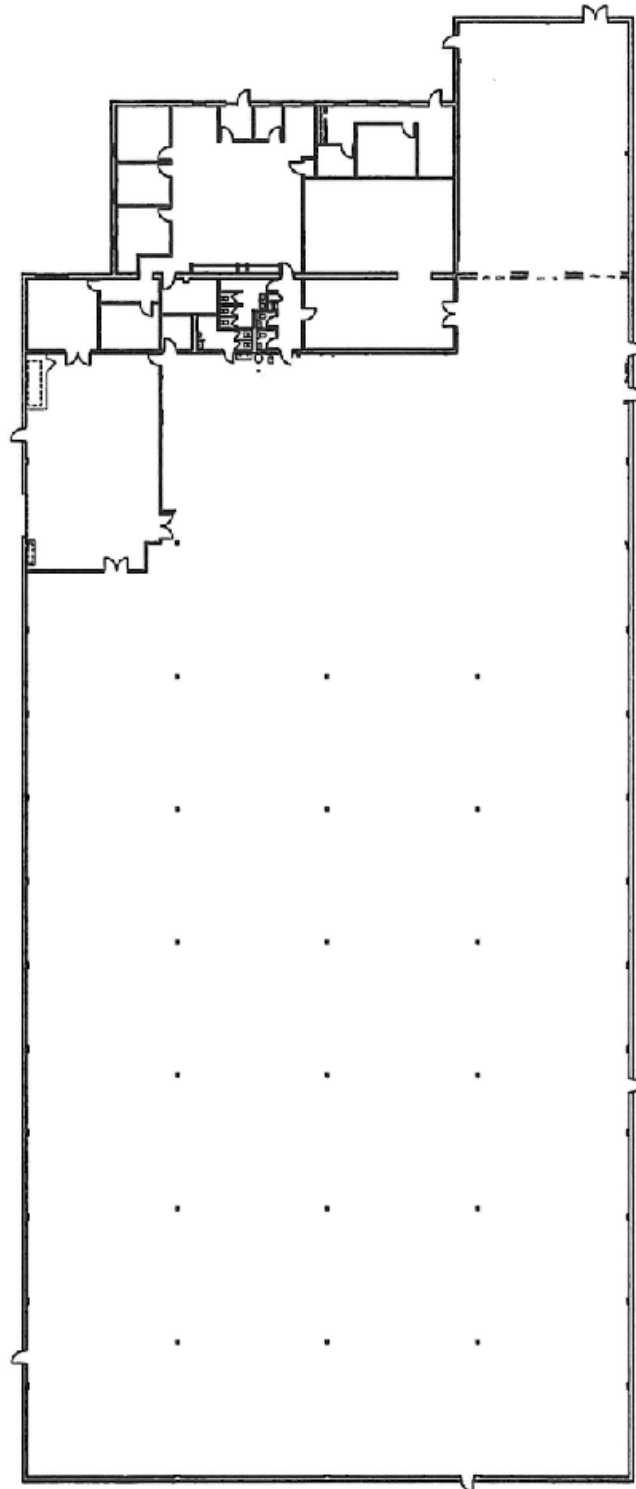


All information herein is from sources reliable but not guaranteed accurate. Subject to errors, omissions, and to change of price and terms, prior to sale or lease, all without notice.

2150 Parkes Dr.

AVAILABLE

49,959 SF



All information herein is from sources reliable but not guaranteed accurate. Subject to errors, omissions, and to change of price and terms, prior to sale or lease, all without notice.

2150 Parkes Dr.

49,959 SF

AVAILABLE

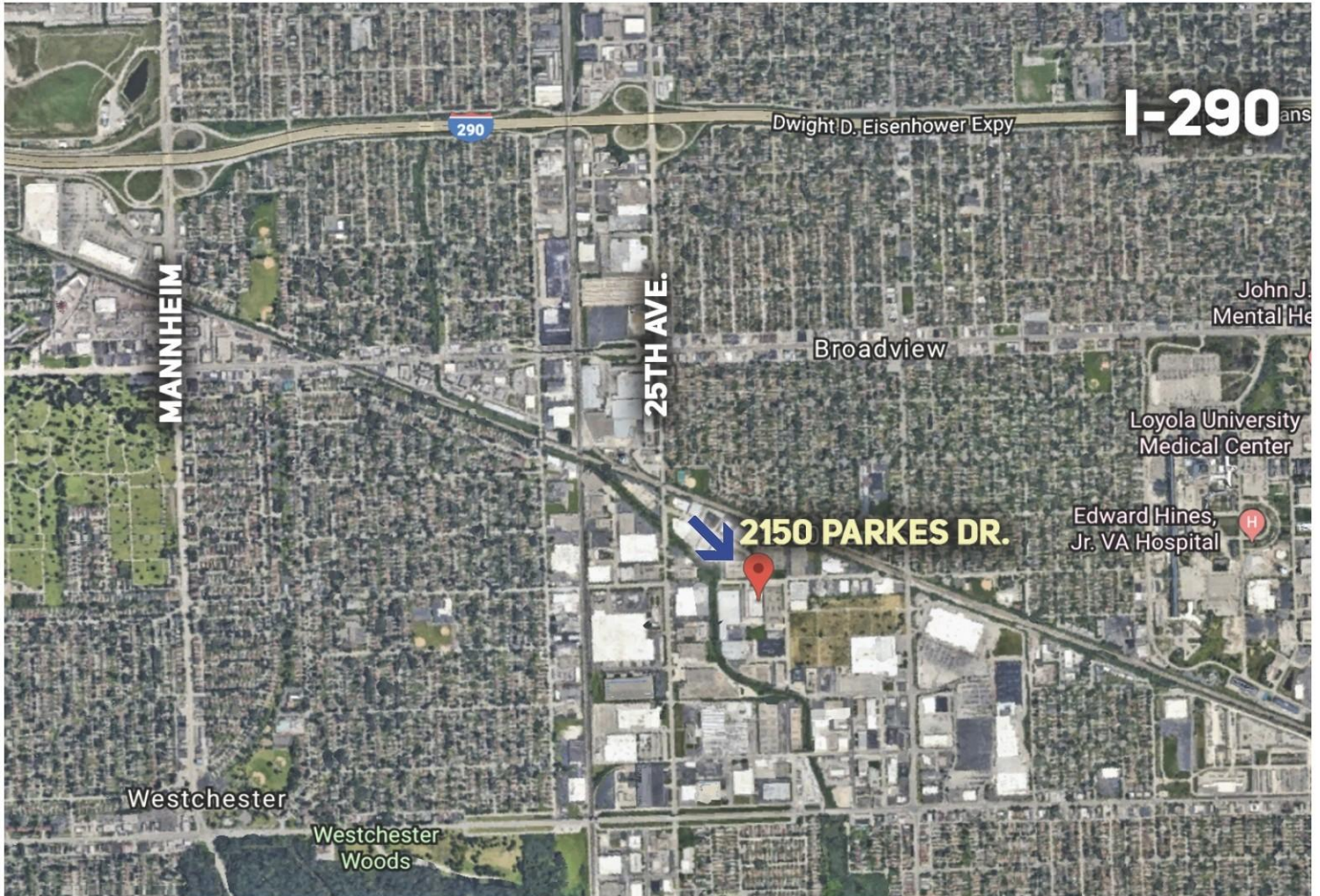


All information herein is from sources reliable but not guaranteed accurate. Subject to errors, omissions, and to change of price and terms, prior to sale or lease, all without notice.

2150 Parkes Dr.

49,959 SF

AVAILABLE



All information herein is from sources reliable but not guaranteed accurate. Subject to errors, omissions, and to change of price and terms, prior to sale or lease, all without notice.