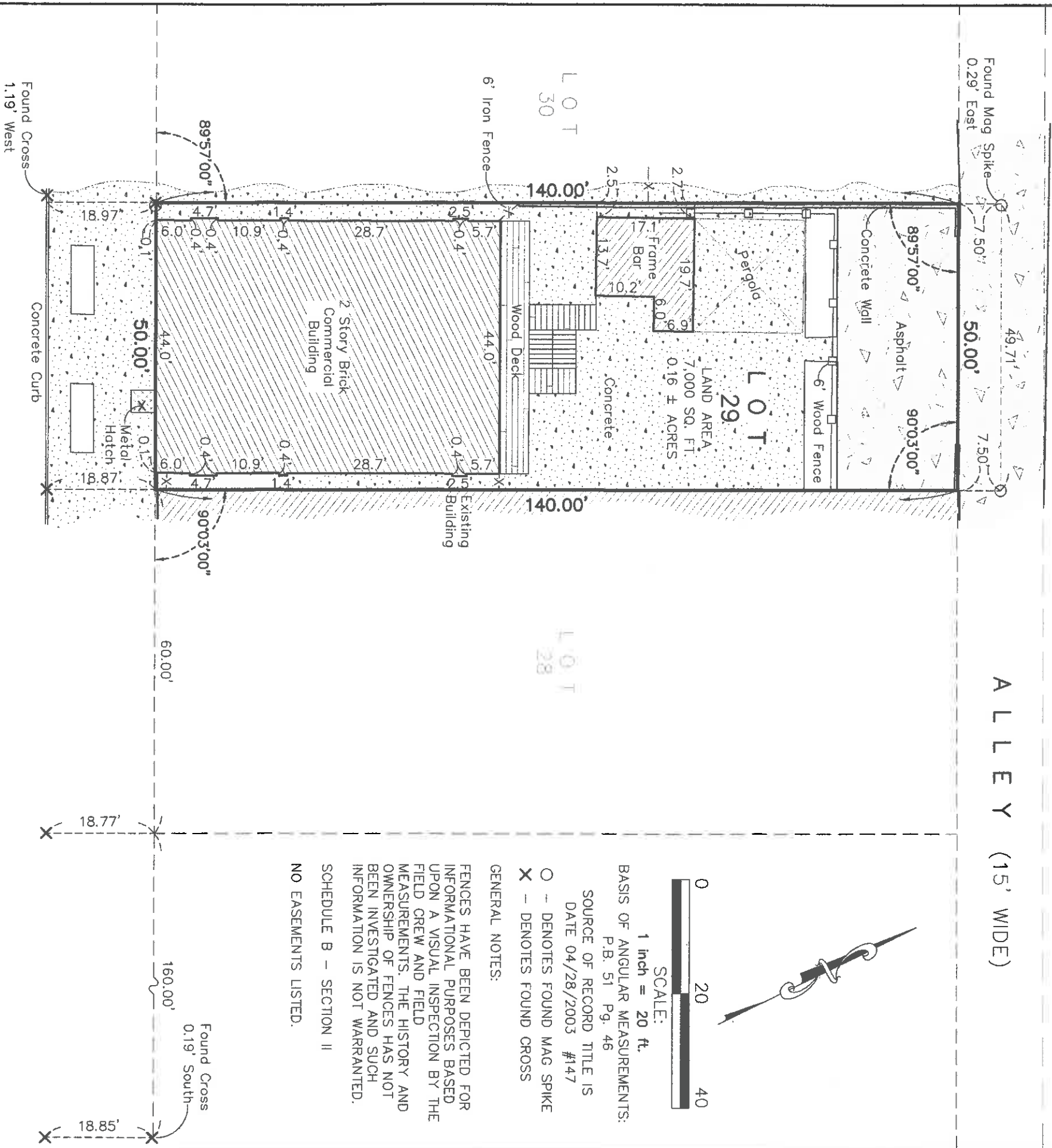


# BOUNDARY RESURVEY AND LOCATION OF IMPROVEMENTS AND EASEMENTS FULLERTON'S SUBDIVISION

CITY BLOCK 2963  
CITY OF ST. LOUIS, MISSOURI



BASIS OF ANGULAR MEASUREMENTS:  
P.B. 51 Pg. 46

SOURCE OF RECORD TITLE IS  
DATE 04/28/2003 #147

- - DENOTES FOUND MAG SPIKE
- ✕ - DENOTES FOUND CROSS

**GENERAL NOTES:**

FENCES HAVE BEEN DEPICTED FOR INFORMATIONAL PURPOSES BASED UPON A VISUAL INSPECTION BY THE FIELD CREW AND FIELD MEASUREMENTS. THE HISTORY AND OWNERSHIP OF FENCES HAS NOT BEEN INVESTIGATED AND SUCH INFORMATION IS NOT WARRANTED.

SCHEDULE B - SECTION II  
NO EASEMENTS LISTED.

## M C P H E R S O N A V E N U E (80' WIDE)

### SURVEYOR'S STATEMENT

THIS IS TO CERTIFY AT THE REQUEST OF **COPPER TITLE, LLC** AND **ACDI, LLC**, WE HAVE DURING THE MONTH OF NOVEMBER 2019, PERFORMED A BOUNDARY RESURVEY AND LOCATION OF IMPROVEMENTS AND EASEMENTS ON LOT 29 OF FULLERTON'S SUBDIVISION, A SUBDIVISION RECORDED IN PLAT BOOK 51 PAGE 46 OF THE ST. LOUIS CITY LAND RECORDS OFFICE IN THE CITY OF ST. LOUIS, MISSOURI, AND THE RESULTS OF SAID SURVEY ARE REPRESENTED ON THIS DRAWING:

THAT THE SAID SURVEY WAS EXECUTED IN COMPLIANCE WITH THE CURRENT MISSOURI STANDARDS FOR PROPERTY BOUNDARY SURVEYS AS SET FORTH BY THE MISSOURI DEPARTMENT OF INSURANCE, FINANCIAL INSTITUTIONS AND PROFESSIONAL REGISTRATION (20 CSR 2030-16.040) AND THE MISSOURI BOARD FOR ARCHITECTS, PROFESSIONAL ENGINEERS AND LAND SURVEYORS (20 CSR 2030-16.070), AND THE LOCATION OF IMPROVEMENTS AND EASEMENTS (20 CSR 2030-16.110), EFFECTIVE 12/30/94, AND LAST REVISED MAY OF 2017. (URBAN CLASS PROPERTY)

IN WITNESS WHEREOF, I HAVE SIGNED AND SEALED THE FOREGOING THIS 2nd DAY OF DECEMBER 2019.

TITLE COMMITMENT PROVIDED BY:  
**COPPER TITLE, LLC**  
COMMITMENT NO.: 2019113455

MARLER SURVEYING COMPANY INC.  
MISSOURI CORP. NO. L.S. 347-D

follow us:  
facebook.com/marler-surveying-company-inc  
copyright 2019 by Marler Surveying Company, Inc.



By: MARTY L. MARLER  
MISSOURI P.L.S. 2501

JOB NO. 1911-068  
DRWN BY: J.M.F./D.L.E.

11402 GRAVOIS RD., STE. 200, ST. LOUIS, MO 63126 (314) 729-1001 PH. (314) 729-1044 FAX  
402 EAST SPRINGFIELD ROAD, SULLIVAN, MO (573) 468-4684 PH. (573) 860-8606 FAX



DEPUTY: R.M./E.V.

CHK'D BY: M.L.M.

email: [marler@marlersurveying.net](mailto:marler@marlersurveying.net)