

# Industrial Building for Sale

1100 W MISSISSIPPI AVENUE, DENVER, CO 80223

**CALL FOR OFFERS, OFFERS DUE BY JUNE 8TH!**



**Warehouse Virtual Tour**

**Office Virtual Tour**



## Overview

Hoff & Leigh proudly bring you this highly sought after stand-alone Industrial property for sale, located at 1100 W Mississippi Avenue. It boasts 15,665 SF of office/warehouse space and is situated on a large I-1 zoned Industrial lot, featuring fenced and secure storage, and ample parking.

The building features multiple overhead doors (3) ranging from 10' - 12' in height, warehouse clear height ranging from 16' - 17.5' along with other common areas throughout the building. It currently has an extremely useable 75/25%, warehouse to office ratio.

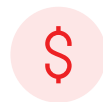
The versatile spaces in the building can be used for various industrial and retail businesses. This property is ideal with its prime location, flexible zoning, and attractive features. Contact us today to schedule your private showing.

\*Billboard generates \$2,800 annually.

## Highlights

- Fenced Yard Space
- Ample Parking and Outside Storage
- High Visibility Signage
- Frontage along W. Mississippi Avenue
- Flexible I-1 Zoning
- Multiple Overhead Doors
- Billboard Income in Place

## Property Details



**Sales Price**  
\$2,584,725  
\$1,600,000



**Lot Size**  
0.82 Acres



**Building Size**  
15,665 SF



**Zoning**  
I-1

Rev: May 26, 2026



### Our Network Is Your Edge

All information is from sources deemed reliable and is subject to errors, omissions, change of price, rental, prior sale, and withdrawal without notice. Prospect should carefully verify each item of information contained herein.

### Brandon Langiewicz, SIOR

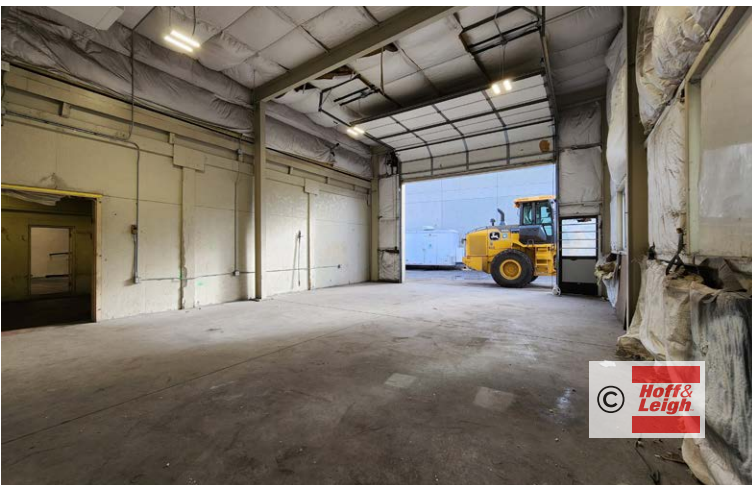
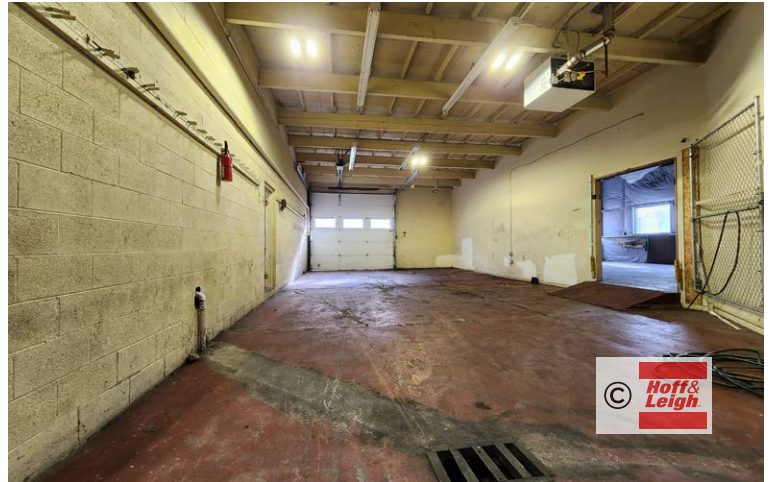
C: 715.512.0265  
O: 720.572.5187  
Brandon@HoffLeigh.com

### Chris Camozzi

C: 303.328.5611  
O: 720.572.5187  
CCamozzi@HoffLeigh.com

# Industrial Building for Sale

1100 W MISSISSIPPI AVENUE, DENVER, CO 80223



Rev: May 26, 2026

### Our Network Is Your Edge

All information is from sources deemed reliable and is subject to errors, omissions, change of price, rental, prior sale, and withdrawal without notice. Prospect should carefully verify each item of information contained herein.

**Brandon Langiewicz, SIOR**

C: 715.512.0265

O: 720.572.5187

Brandon@HoffLeigh.com

**Chris Camozzi**

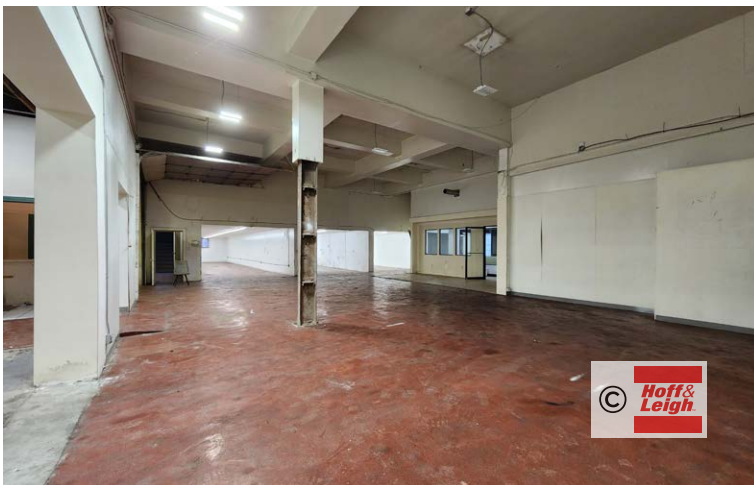
C: 303.328.5611

O: 720.572.5187

CCamozzi@HoffLeigh.com

# Industrial Building for Sale

1100 W MISSISSIPPI AVENUE, DENVER, CO 80223



Rev: May 26, 2026

### Our Network Is Your Edge

All information is from sources deemed reliable and is subject to errors, omissions, change of price, rental, prior sale, and withdrawal without notice. Prospect should carefully verify each item of information contained herein.

**Brandon Langiewicz, SIOR**

C: 715.512.0265

O: 720.572.5187

Brandon@HoffLeigh.com

**Chris Camozzi**

C: 303.328.5611

O: 720.572.5187

CCamozzi@HoffLeigh.com

# Industrial Building for Sale

1100 W MISSISSIPPI AVENUE, DENVER, CO 80223



Rev: May 26, 2026



# Industrial Building for Sale

1100 W MISSISSIPPI AVENUE, DENVER, CO 80223

1100 W Mississippi Ave, Denver, Colorado, 80223

## DEMOGRAPHICS



195,495  
Population



34.6  
Median Age



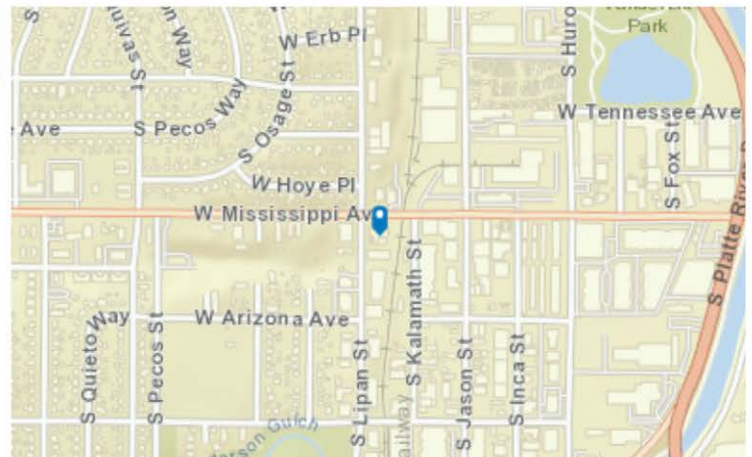
2.2  
Average  
Household Size



\$77,587  
Median Household  
Income

## TRAFFIC COUNT

Cross street	VPD	Distance
W Hoyer Pl	4,700	0.0
W Louisiana Ave	2,600	0.3
S Fox St	20,494	0.4
S Huron St	720	0.4
S Huron St	370	0.5



Rev: May 26, 2026



### Our Network Is Your Edge

All information is from sources deemed reliable and is subject to errors, omissions, change of price, rental, prior sale, and withdrawal without notice. Prospect should carefully verify each item of information contained herein.

### Brandon Langiewicz, SIOR

C: 715.512.0265

O: 720.572.5187

Brandon@HoffLeigh.com

### Chris Camozzi

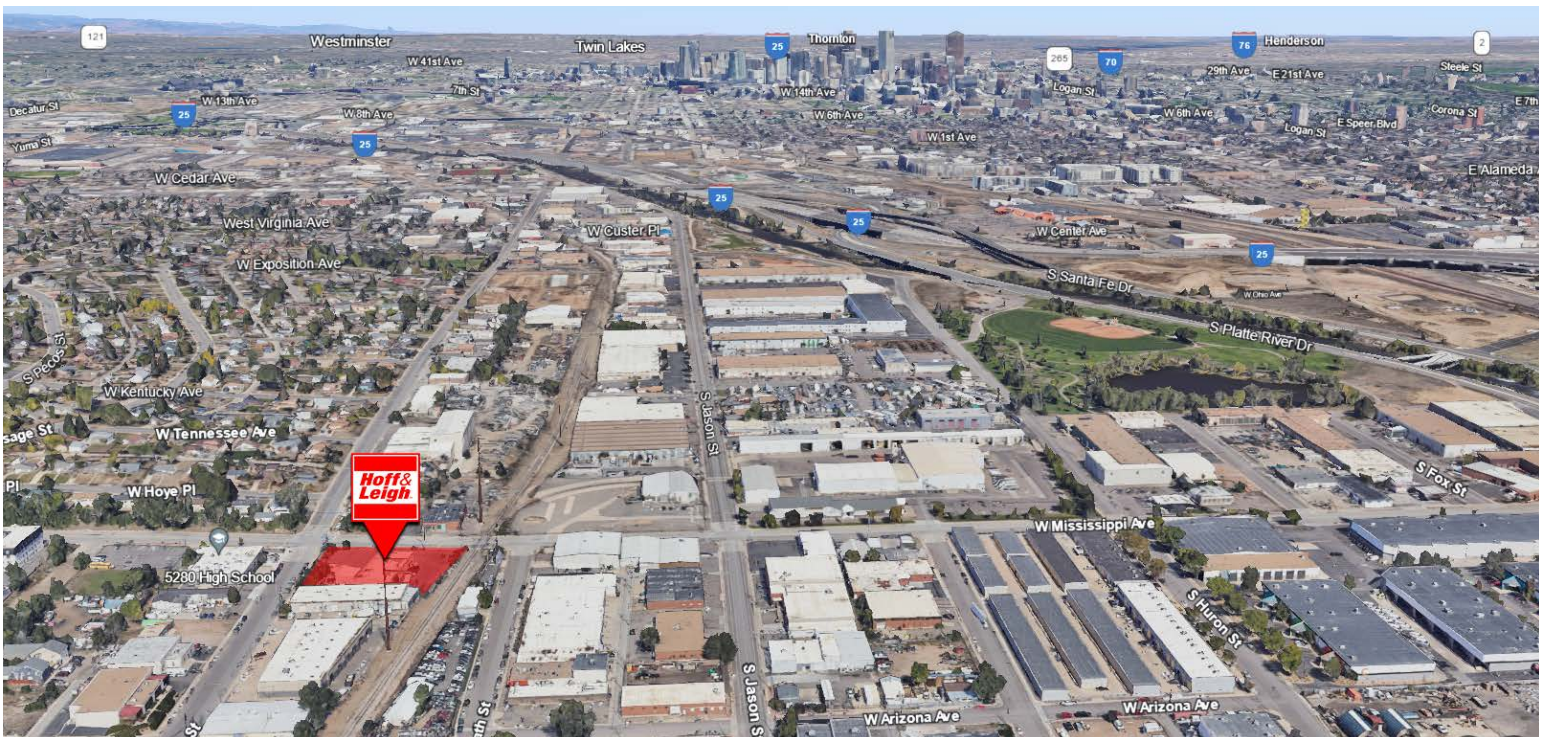
C: 303.328.5611

O: 720.572.5187

CCamozzi@HoffLeigh.com

# Industrial Building for Sale

1100 W MISSISSIPPI AVENUE, DENVER, CO 80223



Rev: May 26, 2026