



# SmartEquity

Commercial Real Estate and Property Management

**FOR LEASE**  
Bank of America Bldg

4625 Lindell Blvd, St. Louis, MO 63108

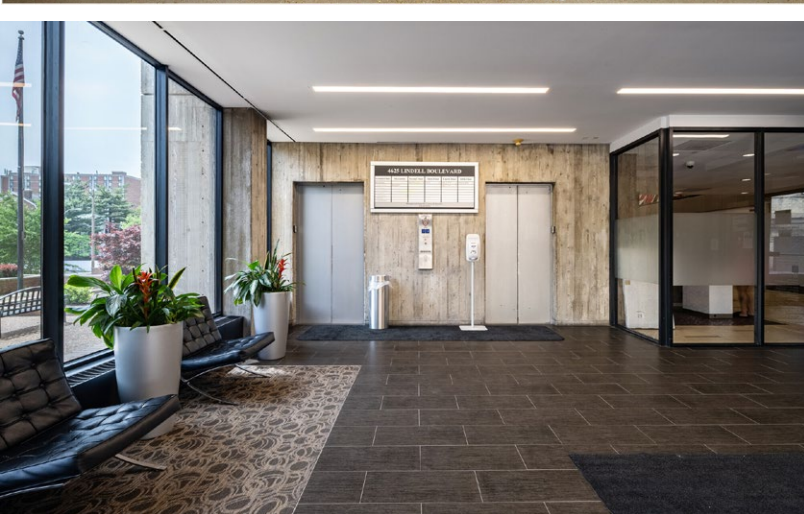
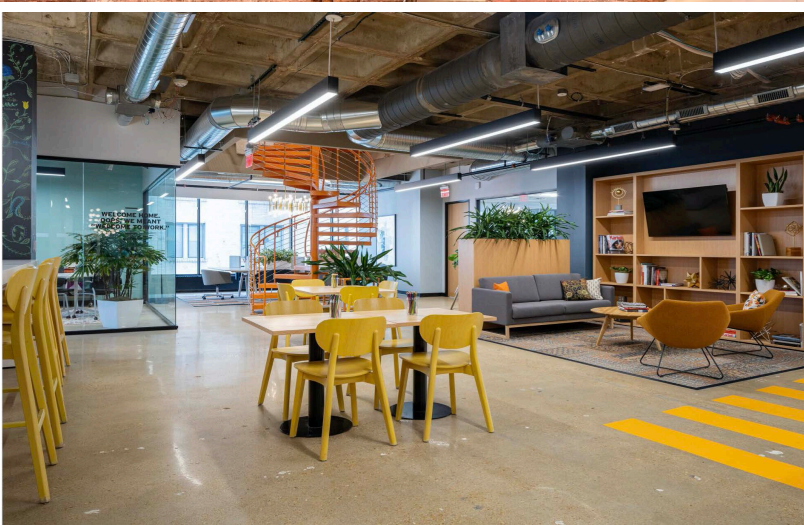
**BRANDON K. SMART, CCIM | 314.254.0088 | Brandon@bsmartequity.com**

**MALIK R. SIMMONS | 314.254.0088 (O) 618.434.0243 (M) | Malik@bsmartequity.com**

**PAUL MABRY 314.254.0088 (O) 317.937.2835 (M) | Paul@bsmartequity.com**

No expressed or implied warranty or representation is made as to the accuracy of the information contained herein. This property is submitted subject to errors, omissions, change of price, withdrawal without notice, prior lease or sale and any other listing conditions imposed by the principals.

# PROPERTY DETAILS



**CLASS B OFFICE**  
Type

**URBAN**  
Location

**71,652 SF**  
Property Size

**1.03**  
AC Lot

**5**  
Stories

**14,057 SF**  
Typical Floor

**4,454 SF**  
Available SF

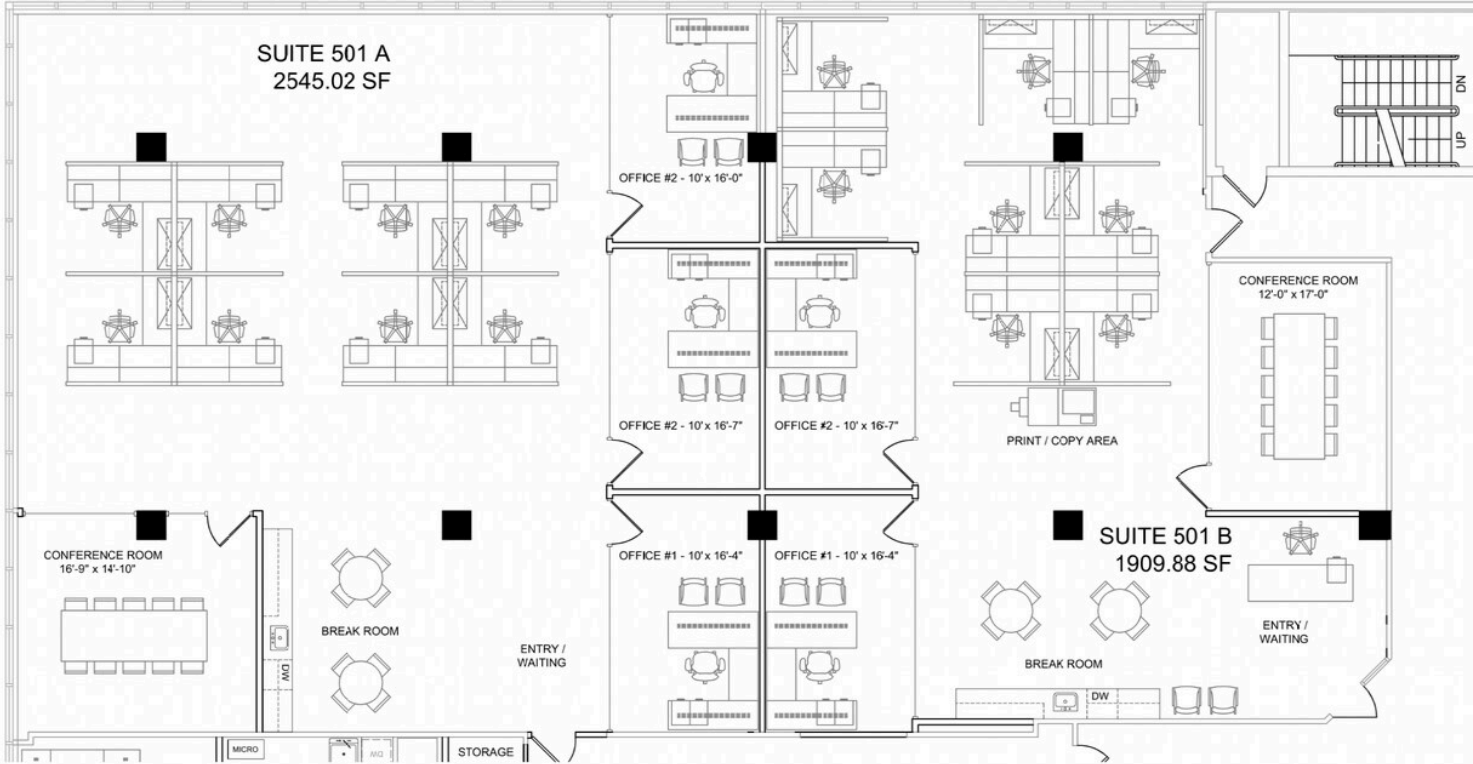
**200: 2.50/1,000 SF**  
Parking Ratio

**COVERED/200**  
Parking Type/Spaces

**\$26.50/psf Full Service**  
Office Rent

# FIFTH FLOOR PLAN

## 4,454 TOTAL RSF



# MAP





# SmartEquity

Commercial Real Estate and Property Management

[www.bsmaequity.com](http://www.bsmaequity.com)