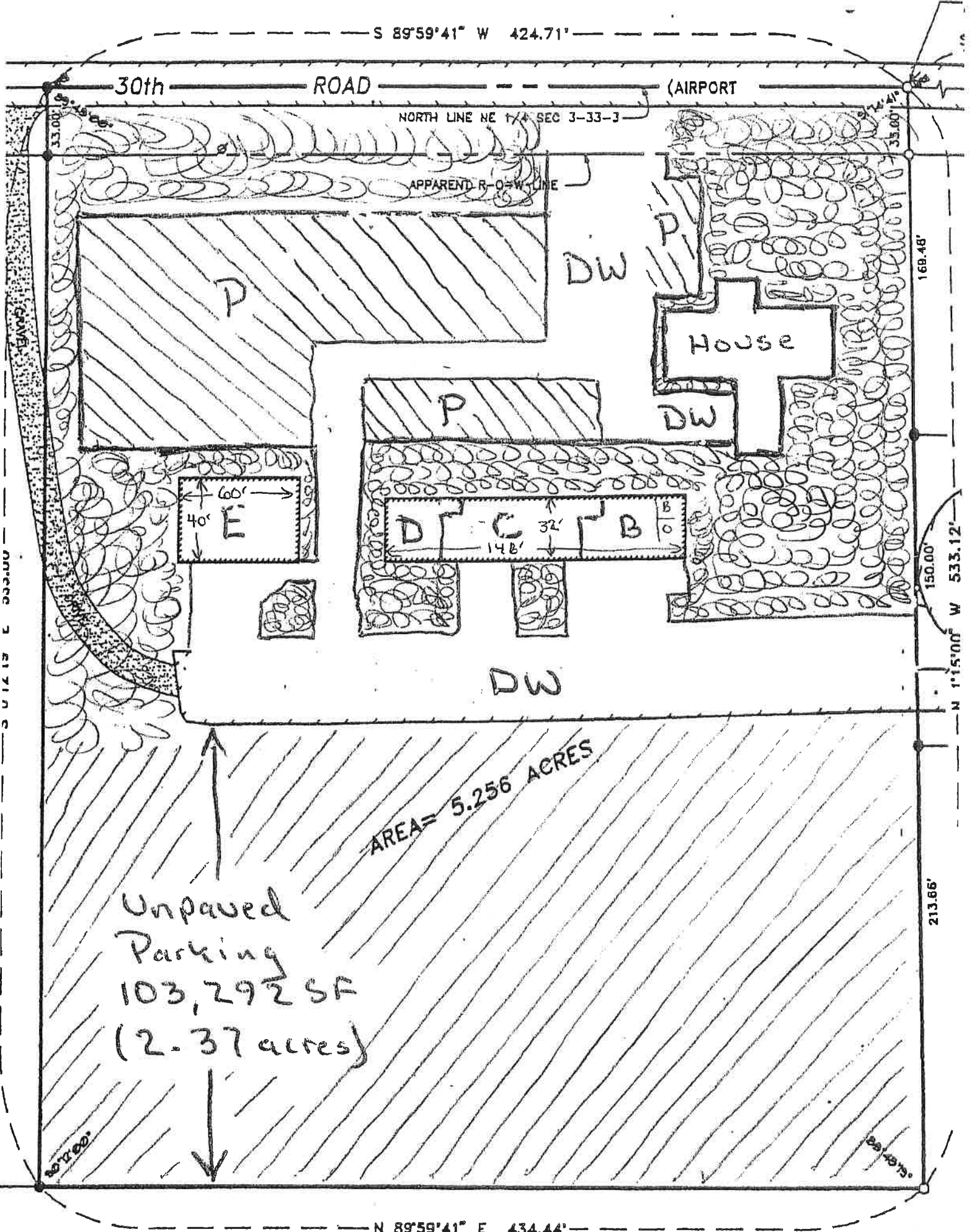


County, Illinois and subject to the rights of the public in and upon that portion being used as a public highway.



AREA = 5.256 ACRES

Unpaved
Parking
103,292 SF
(2.37 acres)

30th ROAD

(AIRPORT)

NORTH LINE NE 1/4 SEC 3-33-3

APPARENT R-O-W LINE

House

P

DW

P

DW

E

D

C

B

DW

N 89°59'41" E 434.44'

213.66'

150.00'

168.48'

GENERIC PLATTING