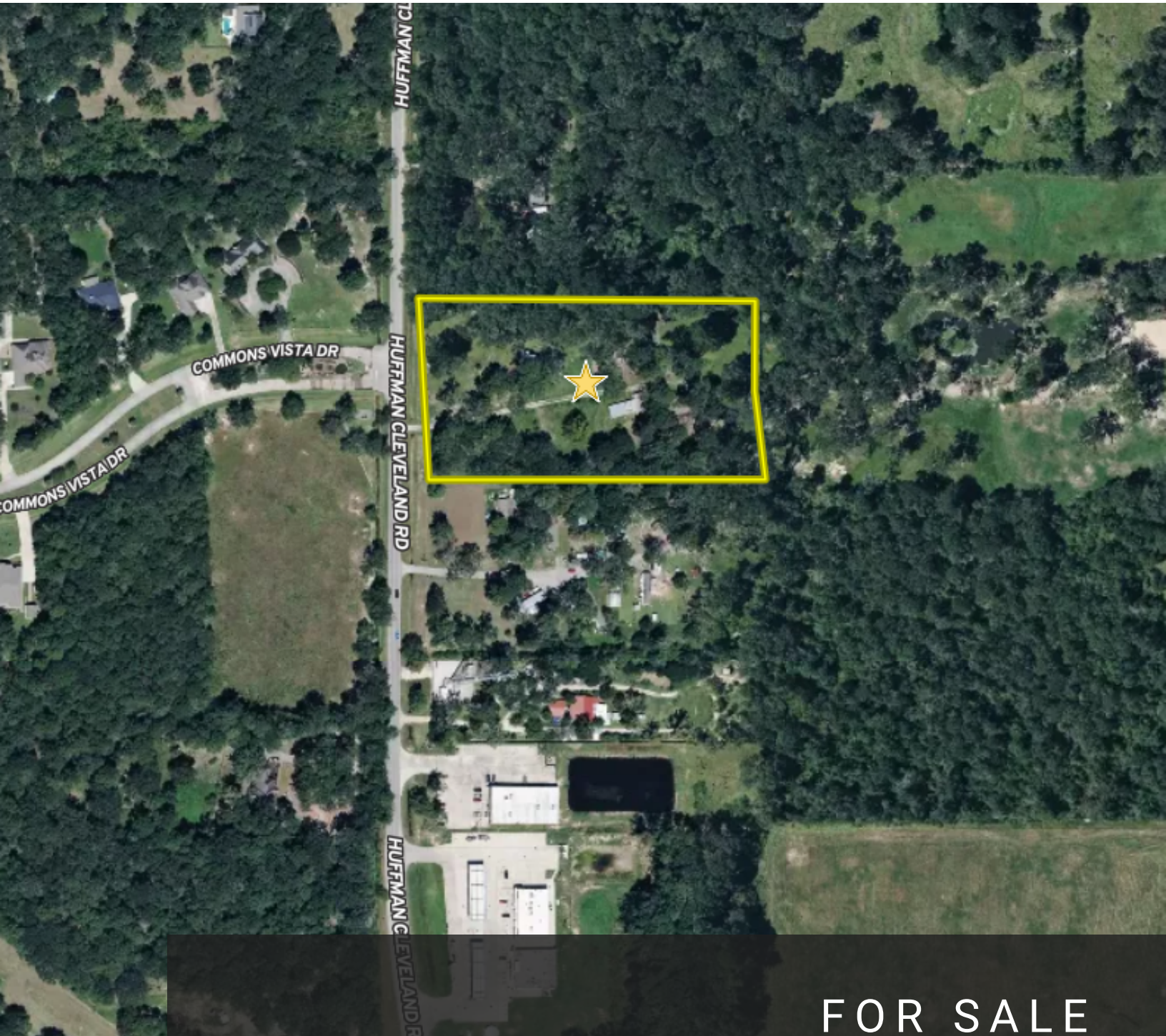


LAND FOR SALE

OFF MARKET 5.1 ACRES LAND IN HUFFMAN

29662 HUFFMAN CLEVELAND RD, HUFFMAN, TX, 77336



FOR SALE

KW COMMERCIAL TEXAS

1220 Augusta Drive, suite 300
Houston, TX 77057



Each Office Independently Owned and Operated

PRESENTED BY:

ASH NOORANI

O: (832) 455-6486

ash@cbanrealestate.com

O: 7135814899

The calculations and data presented are deemed to be accurate, but not guaranteed. They are intended for the purpose of illustrative projections and analysis. The information provided is not intended to replace or serve as substitute for any legal, accounting, investment, real estate, tax or other professional advice, consultation or service. The user of this software should consult with a professional in the respective legal, accounting, tax or other professional area before making any decisions.

TABLE OF CONTENTS

29662 HUFFMAN CLEVELAND ROAD



KW COMMERCIAL TEXAS
1220 Augusta Drive, suite 300
Houston, TX 77057

ASH NOORANI
O: (832) 455-6486
ash@cbanrealestate.com

O: 7135814899

EXECUTIVE SUMAMRY	3
Aerial Map	4
Demographics	5
PROFESSIONAL BIO	6
Disclaimer	7

EXECUTIVE SUMAMRY

29662 HUFFMAN CLEVELAND ROAD



Offering Summary

Price:	\$1,250,000
Price / SF:	\$5.63 PSF
Lot Size:	5.1 acres
Flood Zone:	NO
Sewer:	Private
Electricity:	YES

Property Overview

Located at 29662 Huffman Cleveland Rd, Huffman, TX 77336, this 5.1-acre commercial tract presents a strong land opportunity in a growing Northeast Houston submarket. The property is offered at \$5.63 per SF, making it an attractive option for commercial development or long-term investment.

The surrounding area is supported by strong demographics, with a 5-mile population of 48,739 and a median household income of \$126,364, reflecting an affluent and steadily expanding residential base. This property represents a compelling opportunity for investors or end-users seeking commercial land in a high-income, growing Houston-area market.

[Click here for Survey](#)

KW COMMERCIAL TEXAS
1220 Augusta Drive, suite 300
Houston, TX 77057



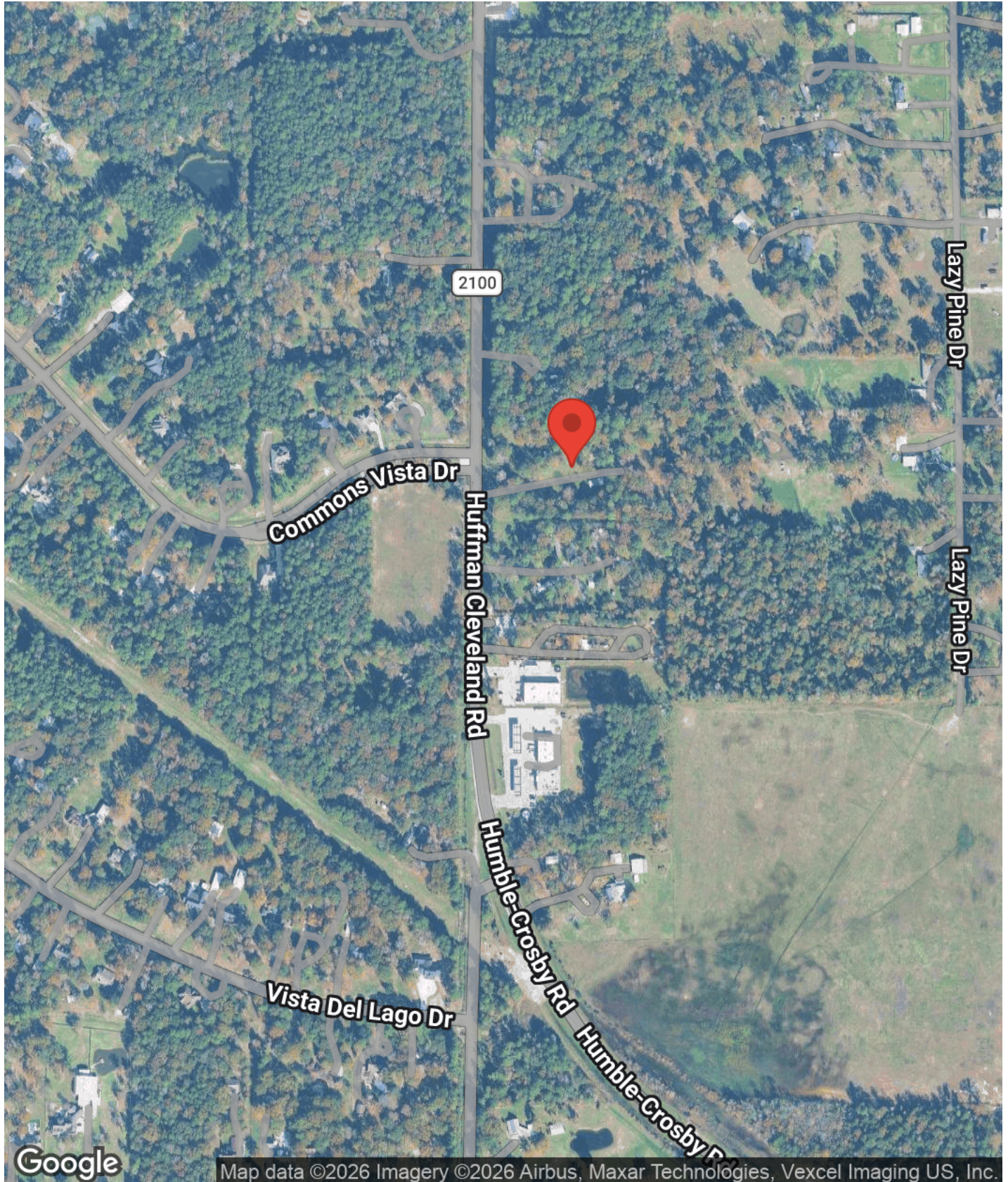
Each Office Independently Owned and Operated

ASH NOORANI
O: (832) 455-6486
ash@cbanrealestate.com

O: 7135814899

AERIAL MAP

29662 HUFFMAN CLEVELAND ROAD



Map data ©2026 Imagery ©2026 Airbus, Maxar Technologies, Vexcel Imaging US, Inc.

KW COMMERCIAL TEXAS
1220 Augusta Drive, suite 300
Houston, TX 77057



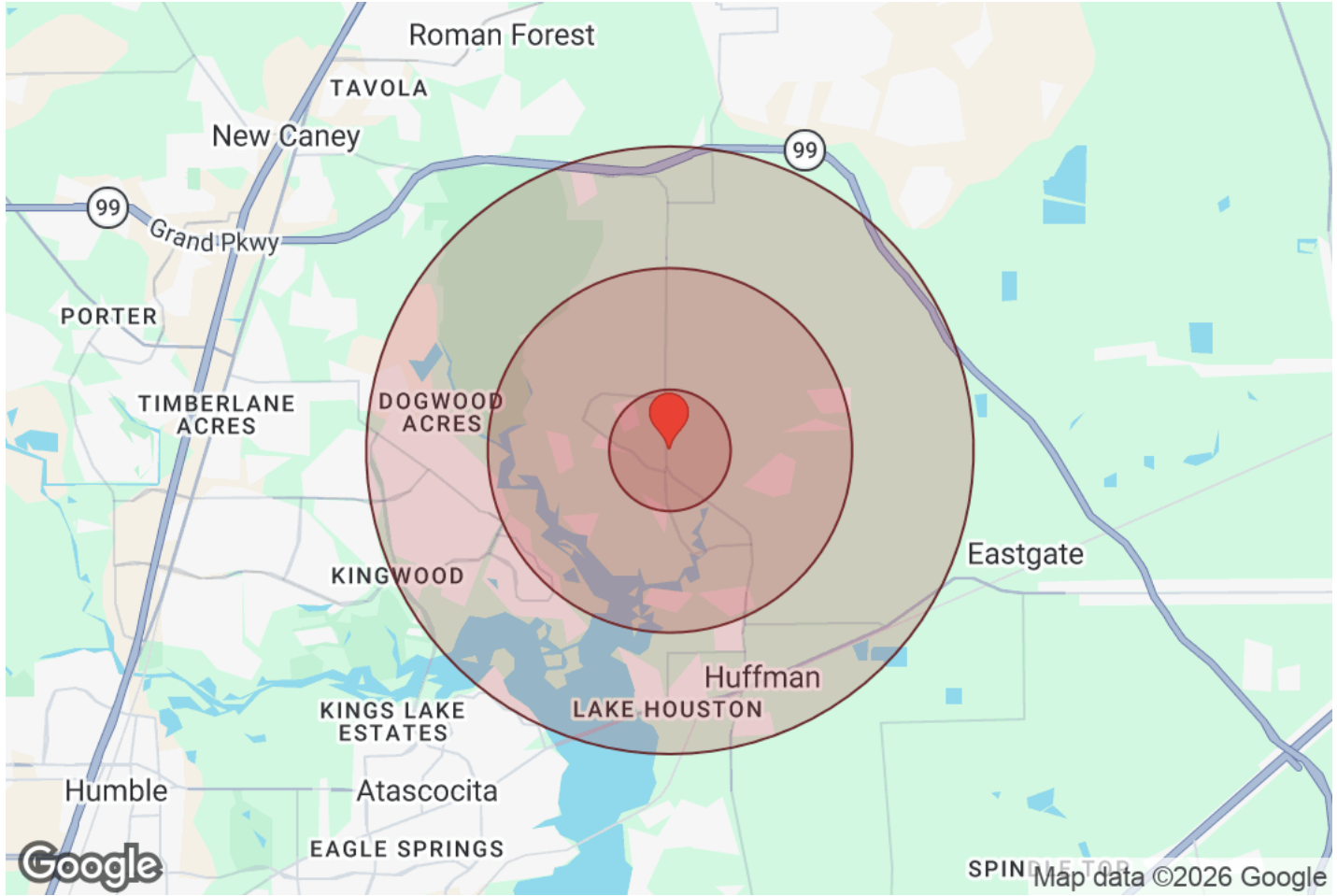
Each Office Independently Owned and Operated

ASH NOORANI
O: (832) 455-6486
ash@cbanrealestate.com

O: 7135814899

DEMOGRAPHICS

29662 HUFFMAN CLEVELAND ROAD



Distance: ● 1 Mile ● 3 Miles ● 5 Miles

Population	1 Mile	3 Miles	5 Miles
Male	1,397	6,094	24,074
Female	1,410	5,977	24,665
Total Population	2,807	12,071	48,739

Race / Ethnicity	1 Mile	3 Miles	5 Miles
White	1,814	7,910	29,760
Black	151	682	3,417
Am In/AK Nat	5	23	73
Hawaiian	N/A	1	15
Hispanic	711	2,881	12,214
Asian	58	303	2,096
Multiracial	57	229	1,019
Other	11	41	146

Housing	1 Mile	3 Miles	5 Miles
Total Units	1,046	4,516	18,600
Occupied	948	4,087	16,937
Owner Occupied	834	3,649	13,939
Renter Occupied	114	438	2,998
Vacant	98	429	1,663

Age	1 Mile	3 Miles	5 Miles
Ages 0 - 14	577	2,419	10,083
Ages 15 - 24	347	1,530	6,292
Ages 25 - 54	975	4,110	16,976
Ages 55 - 64	365	1,747	6,222
Ages 65+	542	2,264	9,167

Income	1 Mile	3 Miles	5 Miles
Median	\$114,506	\$123,549	\$126,364
Under \$15k	87	301	1,230
\$15k - \$25k	24	92	525
\$25k - \$35k	40	136	524
\$35k - \$50k	31	369	1,058
\$50k - \$75k	120	459	1,762
\$75k - \$100k	134	404	1,892
\$100k - \$150k	152	661	2,797
\$150k - \$200k	164	655	2,392
Over \$200k	195	1,010	4,756

KW COMMERCIAL TEXAS
1220 Augusta Drive, suite 300
Houston, TX 77057



Each Office Independently Owned and Operated

ASH NOORANI
O: (832) 455-6486
ash@cbanrealestate.com

O: 7135814899



Ash Noorani
DIRECTOR

(832) 455-6486

ash@cbanrealestate.com

Ash Noorani is a seasoned commercial real estate agent with 5 years of experience in the industry. Throughout his career, he has established himself as an expert in multifamily, retail centers, land, and gas station deals. He has a keen understanding of market trends, investment analysis, and negotiation strategies, which enables him to deliver superior results to his clients.

Prior to joining the commercial real estate industry, Ash spent 10 years in retail business, where he honed his sales and marketing skills. He has a deep understanding of the retail industry and has a keen eye for identifying opportunities that drive business growth. This experience also helps him to understand the unique needs of retail clients and tailor his approach to meet their specific requirements.

Throughout his career, Ash has built a reputation for his dedication to client satisfaction. He takes a consultative approach to real estate, working closely with his clients to understand their needs, goals, and priorities. He is committed to delivering exceptional service and achieving optimal outcomes for his clients.

If you are looking for a commercial real estate agent with expertise in multifamily, retail centers, land, and gas station deals, Ash is the professional you



Juan Barajas
AGENT

(281) 630-1594

juanandresbarajas@hotmail.com

Juan Barajas is a bilingual, full-time licensed real estate agent with over 26 years of experience in the Houston area. Since the year 2000, he has successfully sold more than 1,000 homes, building a strong reputation for expert negotiation skills, consistent results, and exceptional client service. His success has led to a business built largely on repeat clients and outstanding referrals, reflecting the trust and satisfaction of those he has served throughout his career.

He is committed to ensuring every client's needs are met and expectations are exceeded by bringing strong business leadership, integrity, and a genuine passion for getting the job done. Known for being positive, patient, humble, and honest, he provides buyers and sellers with the tools and information needed to make well-informed decisions. By staying on top of the real estate market, he allows his clients to focus on their goals while he handles the details. He does not work a typical 9-to-5 schedule—he works from start to finish, fully dedicated to guiding every transaction through to a successful close.



Disclaimer

29662 HUFFMAN CLEVELAND ROAD



All materials and information received or derived from KW Commercial its directors, officers, agents, advisors, affiliates and/or any third party sources are provided without representation or warranty as to completeness, veracity, or accuracy, condition of the property, compliance or lack of compliance with applicable governmental requirements, developability or suitability, financial performance of the property, projected financial performance of the property for any party's intended use or any and all other matters.

Neither KW Commercial its directors, officers, agents, advisors, or affiliates makes any representation or warranty, express or implied, as to accuracy or completeness of the materials or information provided, derived, or received. Materials and information from any source, whether written or verbal, that may be furnished for review are not a substitute for a party's active conduct of its own due diligence to determine these and other matters of significance to such party. KW Commercial will not investigate or verify any such matters or conduct due diligence for a party unless otherwise agreed in writing.

EACH PARTY SHALL CONDUCT ITS OWN INDEPENDENT INVESTIGATION AND DUE DILIGENCE.

Any party contemplating or under contract or in escrow for a transaction is urged to verify all information and to conduct their own inspections and investigations including through appropriate third-party independent professionals selected by such party. All financial data should be verified by the party including by obtaining and reading applicable documents and reports and consulting appropriate independent professionals. KW Commercial makes no warranties and/or representations regarding the veracity, completeness, or relevance of any financial data or assumptions. KW Commercial does not serve as a financial advisor to any party regarding any proposed transaction.

All data and assumptions regarding financial performance, including that used for financial modeling purposes, may differ from actual data or performance. Any estimates of market rents and/or projected rents that may be provided to a party do not necessarily mean that rents can be established at or increased to that level. Parties must evaluate any applicable contractual and governmental limitations as well as market conditions, vacancy factors and other issues in order to determine rents from or for the property. Legal questions should be discussed by the party with an attorney. Tax questions should be discussed by the party with a certified public accountant or tax attorney. Title questions should be discussed by the party with a title officer or attorney. Questions regarding the condition of the property and whether the property complies with applicable governmental requirements should be discussed by the party with appropriate engineers, architects, contractors, other consultants, and governmental agencies. All properties and services are marketed by KW Commercial in compliance with all applicable fair housing and equal opportunity laws.

KW COMMERCIAL TEXAS

1220 Augusta Drive, suite 300
Houston, TX 77057



Each Office Independently Owned and Operated

PRESENTED BY:

ASH NOORANI
O: (832) 455-6486
ash@cbanrealestate.com

O: 7135814899

The calculations and data presented are deemed to be accurate, but not guaranteed. They are intended for the purpose of illustrative projections and analysis. The information provided is not intended to replace or serve as substitute for any legal, accounting, investment, real estate, tax or other professional advice, consultation or service. The user of this software should consult with a professional in the respective legal, accounting, tax or other professional area before making any decisions.