

PREMIER HARVARD CORRIDOR MEDICAL/OFFICE FOR LEASE



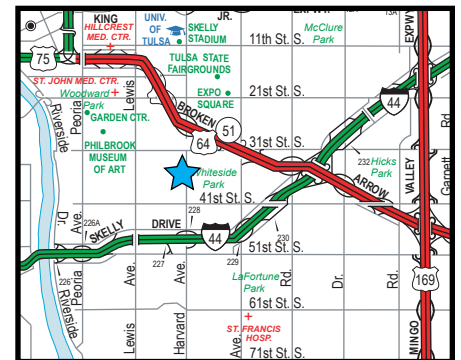
4554 S. HARVARD, TULSA, OK

SIZES

- 9,265 SF Available
- .73 acre land (31,799 SF)

FEATURES

- Premier Office/Medical lease in Tulsa's popular Harvard Corridor
- Available January 1, 2027
- Professional office configuration, adaptable also for medical
- Quality finishes includes LED Lighting, luxury plank and carpet square flooring
- Split size from 4,500 SF can be considered
- Tenant improvement allowances available for qualified terms
- Abundant 4.3 cars/1000 SF parking spaces (40+ spaces)
- Convenient "park to door" convenience
- 3 Separate outside entrances – split space potential
- 1982 Brick/Steel frame construction; 2017 renovation
- Building security system; Cox DSL Internet
- Convenient 1/2-mile access to I-44
- Building Signage to Harvard



Tulsa Area Map

The information contained herein is believed to be accurate but is not guaranteed as to accuracy and may change or be updated without notice.

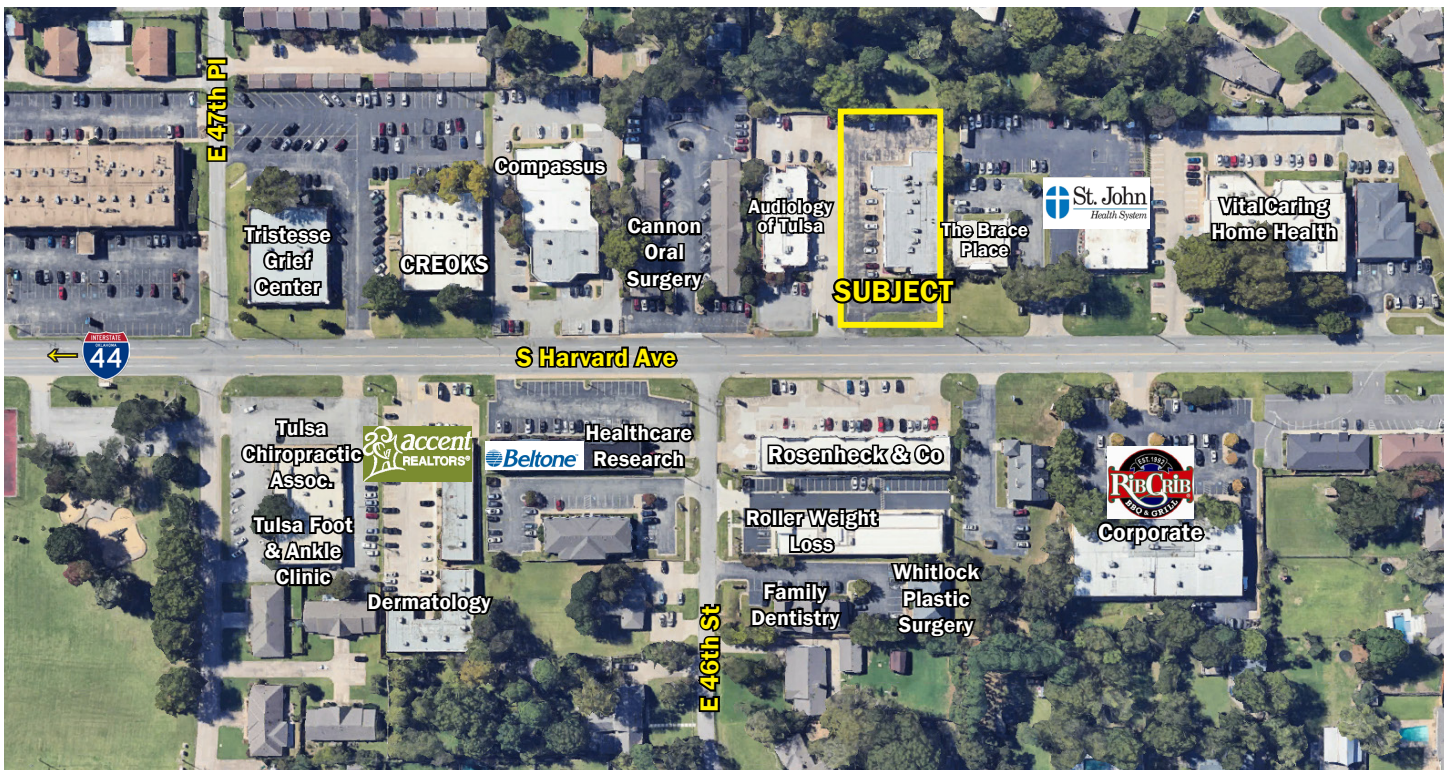
Contact: Monty Berry, CCIM, SIOR

Office (918) 280-9900 | **Cell** (918) 695-4162 | **Fax** (918) 280-9902

E-mail Monty@EquitasRealty.com



Aerial



Side Front Exterior

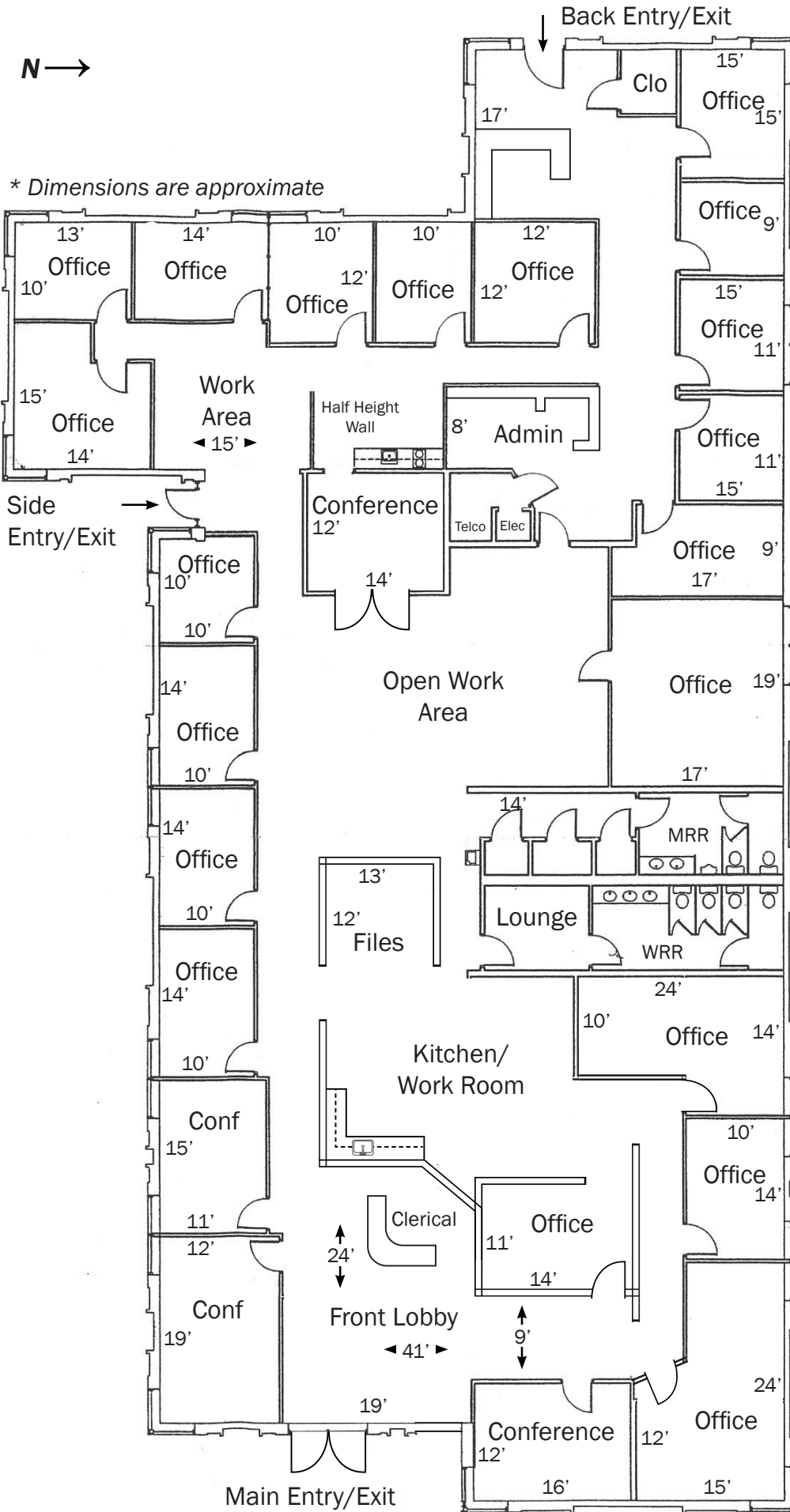


Back Exterior



Front Signage

Floor Plan



Photos



Front Entry



Kitchen



Open Work Area



Open Work Area



Conference



Typical Office



Back Entry



Side Entry