

RETAIL / OFFICE / SERVICE FOR LEASE

108 Plaza Circle, Suite D ♦ Alabaster, AL ♦ 35007 ♦ Shelby County



900 +/- Sq. Ft. ♦ PRICE: \$1,500 per month Full Service

MARK DINAN
Commercial & Investment Real Estate

205-980-3434

*All Information furnished regarding property sale, rental, or financing is from sources deemed reliable, but is not guaranteed.

PROPERTY DETAILS

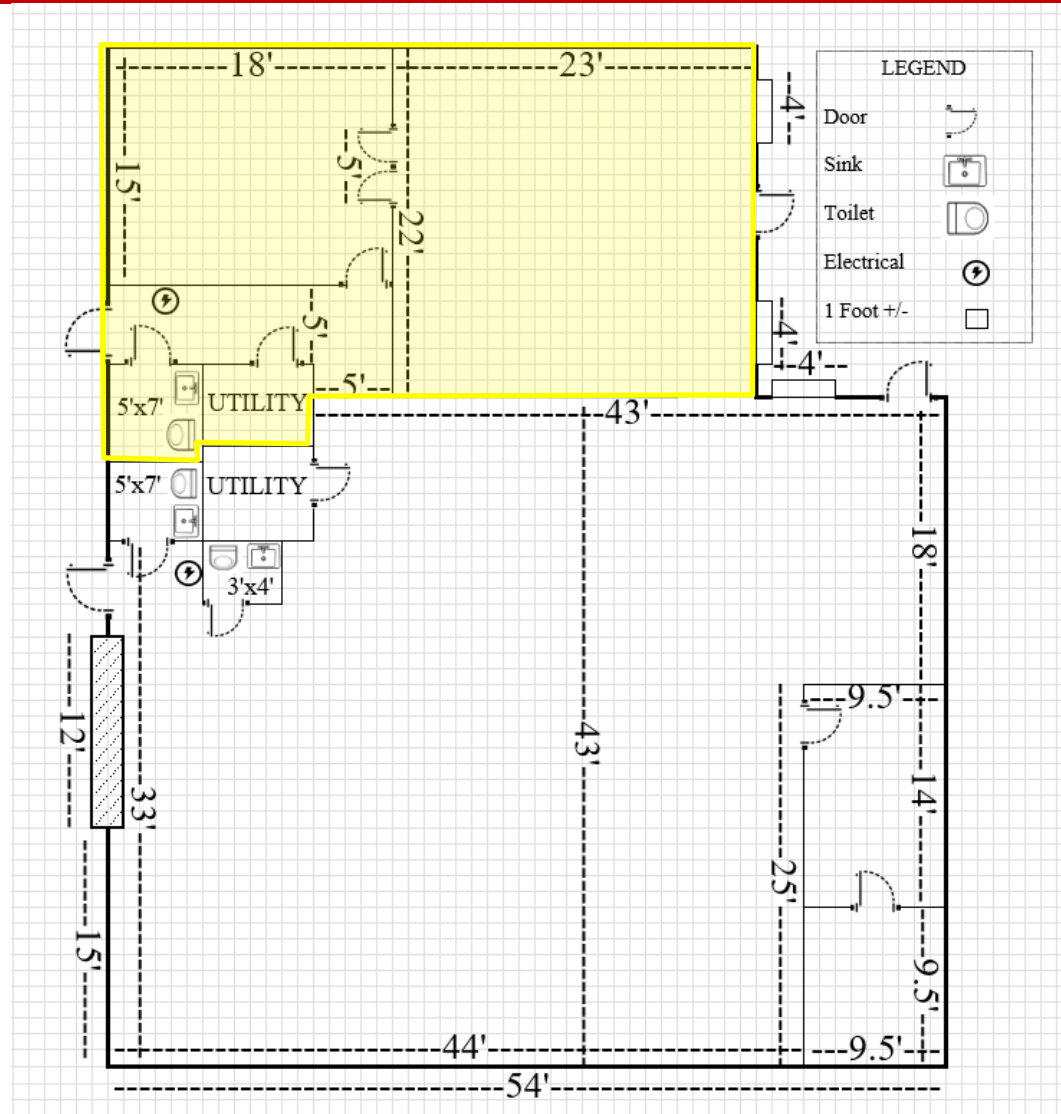
108 Plaza Circle, Suite D ♦ Alabaster, AL ♦ 35007 ♦ Shelby County

- ♦ 900 +/- sf
- ♦ Fully Renovated.
- ♦ Like New Move-in Condition.
- ♦ Plug in and go to work.
- ♦ Rent includes all expenses for taxes, insurance and CAM, water, sewer, electrical, maintenance, wi-fi.
- ♦ Fully Heated and Cooled.
- ♦ Floor plan includes offices, showroom, work space, and private restroom.
- ♦ New LVP floors, LED lights, Efficient.
- ♦ Level abundant parking.
- ♦ Signage
- ♦ Zoned B-3 Community Business/119 Overlay District
- ♦ High Growth Corridor. Visible from Hwy 119
- ♦ Easy access from Hwy 119 at a traffic light.
- ♦ Surrounded by retail business.
- ♦ One of Shelby County's fastest growing areas.
- ♦ Money Magazine called Alabaster Top 50 cities to Live in America 2020.
- ♦ Easy access at traffic light across from Post Office next to Brooklere Pharmacy and YMCA.



FLOOR PLAN

108 Plaza Circle, Suite D ♦ Alabaster, AL ♦ 35007 ♦ Shelby County



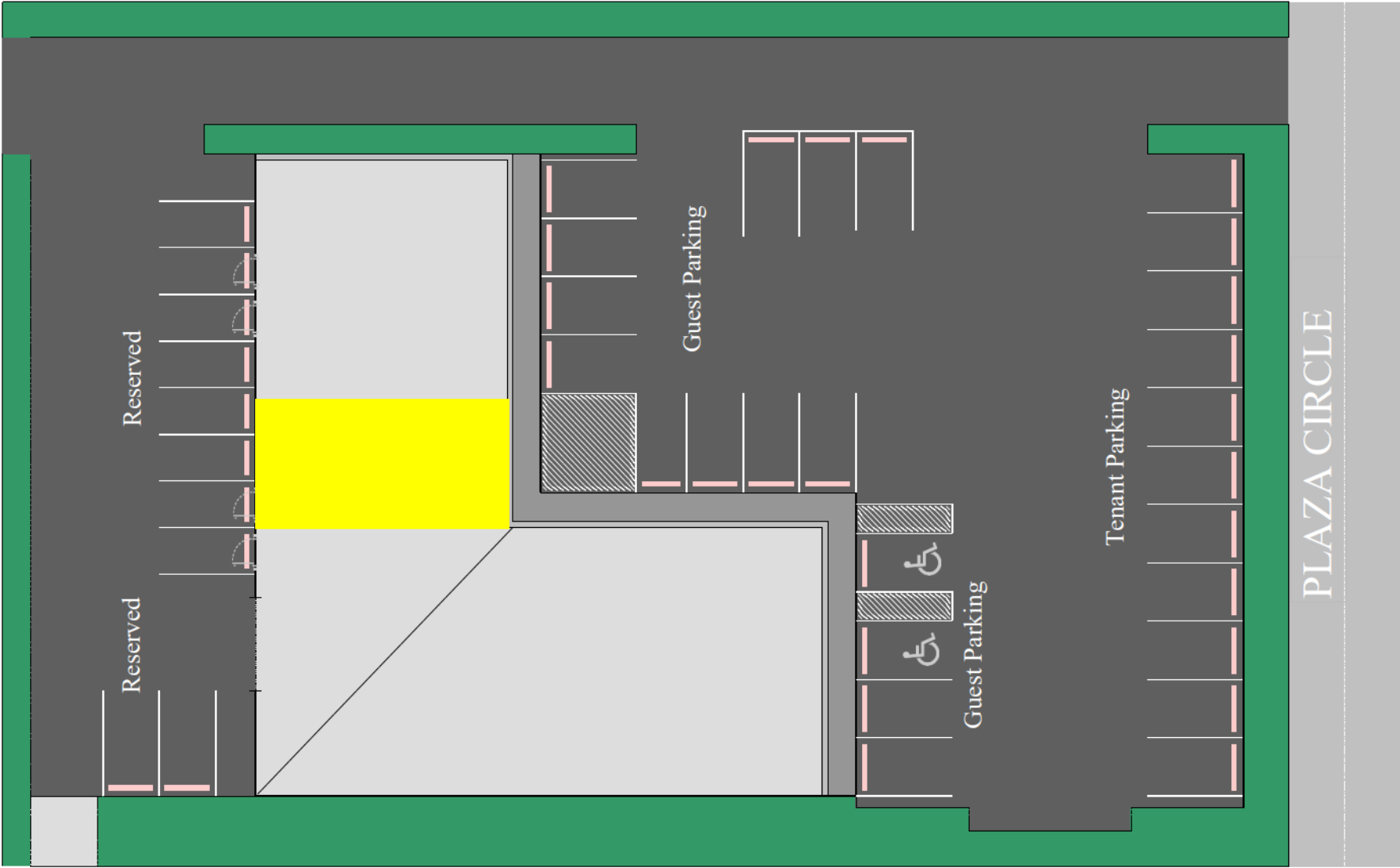
INTERIOR / EXTERIOR PHOTOS

108 Plaza Circle, Suite D ♦ Alabaster, AL ♦ 35007 ♦ Shelby County



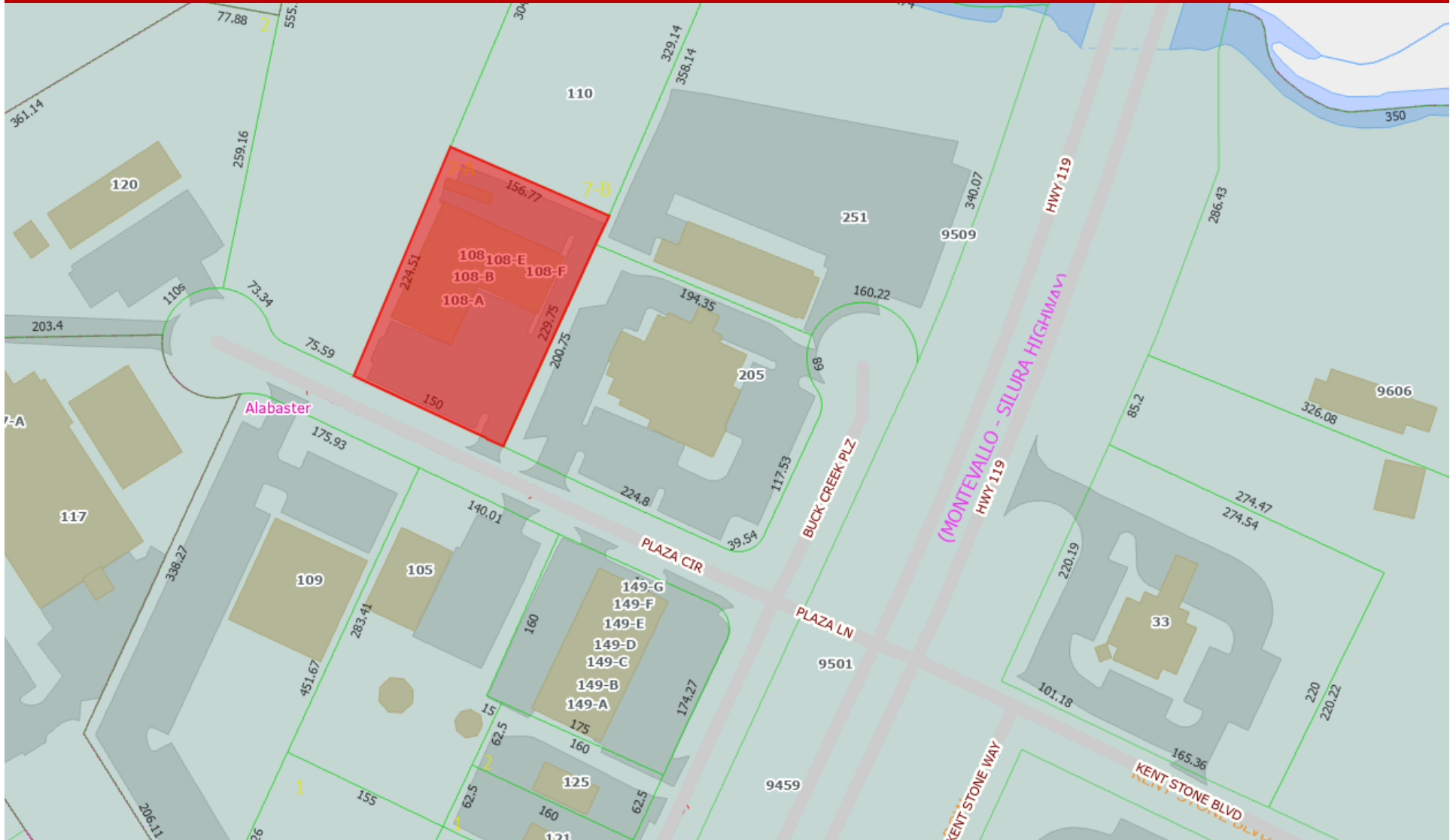
PARKING MAP

108 Plaza Circle, Suites C & D ♦ Alabaster, AL ♦ 35007 ♦ Shelby County



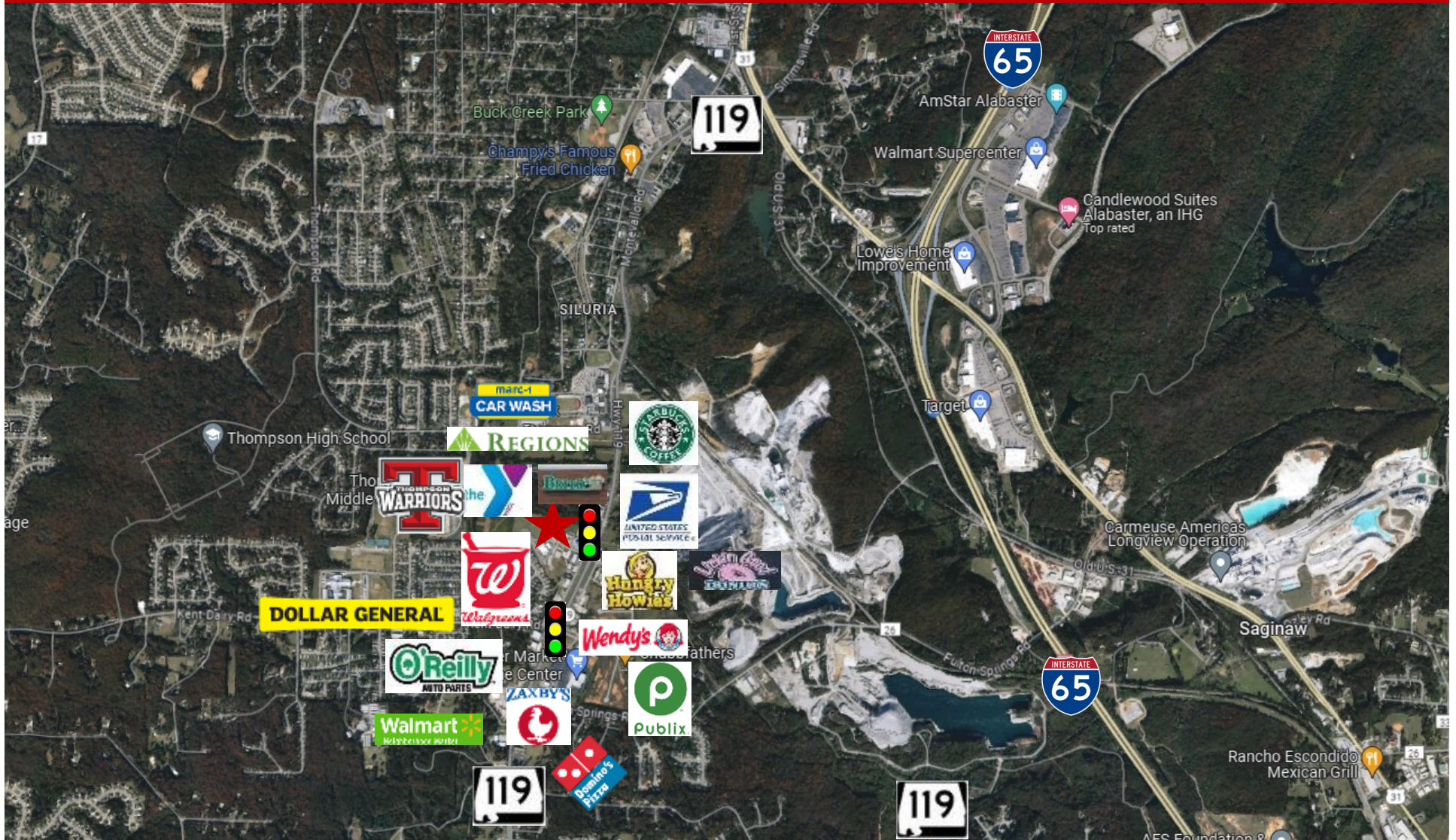
PLAT MAP

108 Plaza Circle, Suite D ♦ Alabaster, AL ♦ 35007 ♦ Shelby County



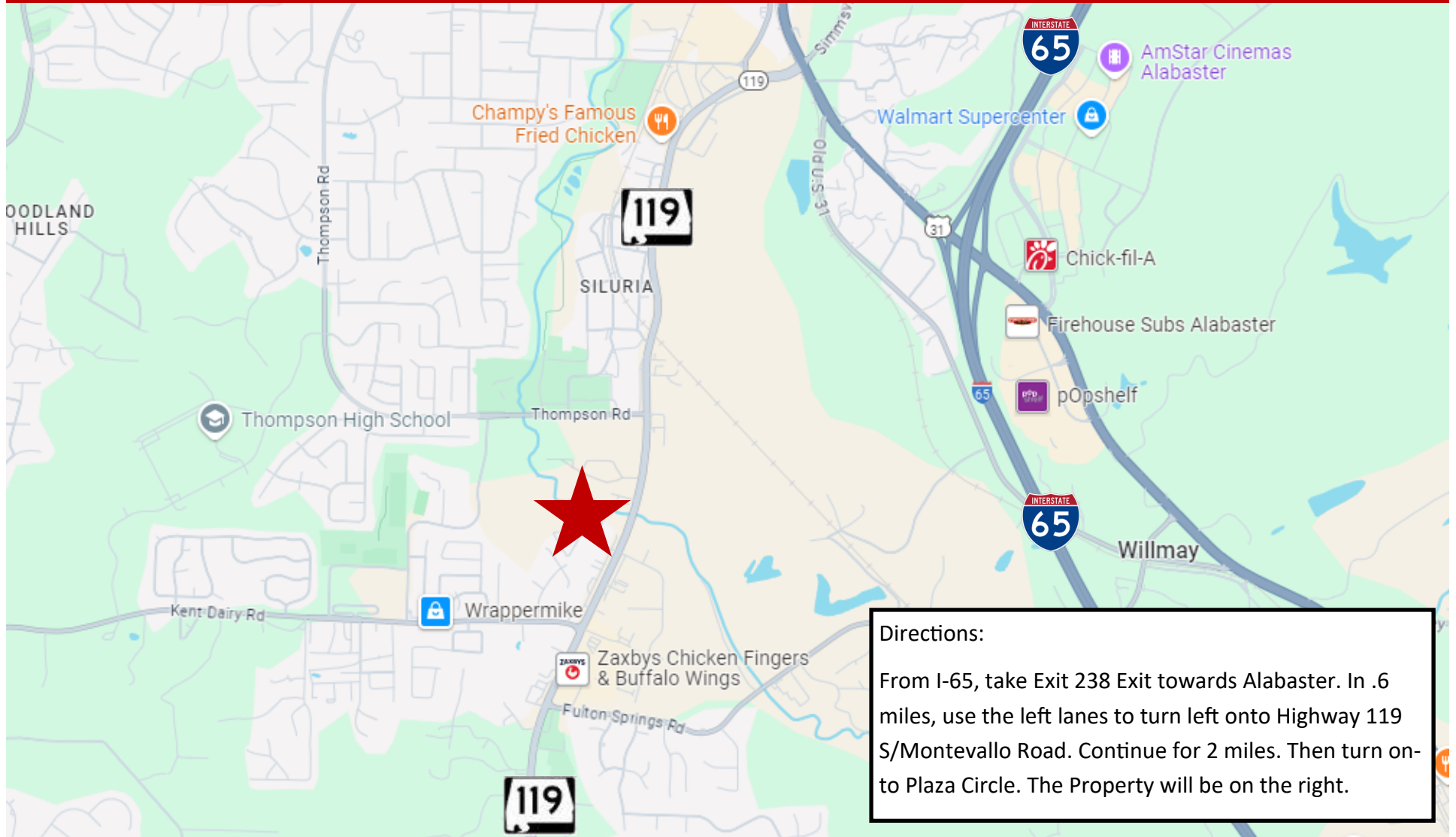
AERIAL MAP

108 Plaza Circle, Suite D ♦ Alabaster, AL ♦ 35007 ♦ Shelby County



LOCATION MAP

108 Plaza Circle, Suite D ♦ Alabaster, AL ♦ 35007 ♦ Shelby County



Directions:
From I-65, take Exit 238 Exit towards Alabaster. In .6 miles, use the left lanes to turn left onto Highway 119 S/Montevallo Road. Continue for 2 miles. Then turn on to Plaza Circle. The Property will be on the right.