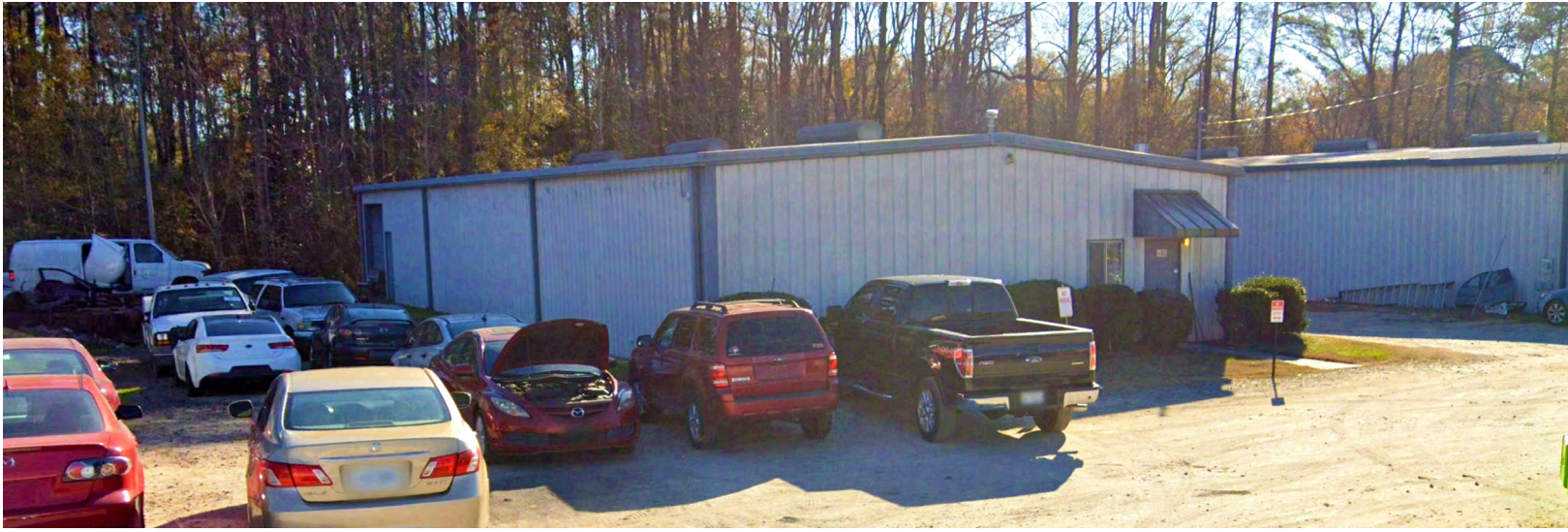


# Conoley Industrial Park

Wendell, North Carolina

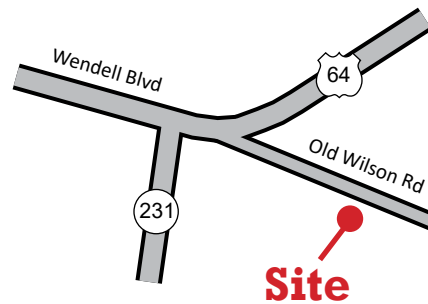
FOR  
LEASE



## Outstanding Industrial Park Located in Wendell, NC

### Features

- Building 480: 4,000 SF
- Great location off Old Wilson Rd near the intersection of Business 64 and Highway 231
- Zoned: Manufacturing & Industrial (M&I)
- Space includes two offices and one bathroom
- Two grade level doors
- Contact agent for more details or to schedule a showing



For more information,  
please contact:

**Jimmy Woody**

919.833.2213

*jwoody@  
insightpropertygroup.com*

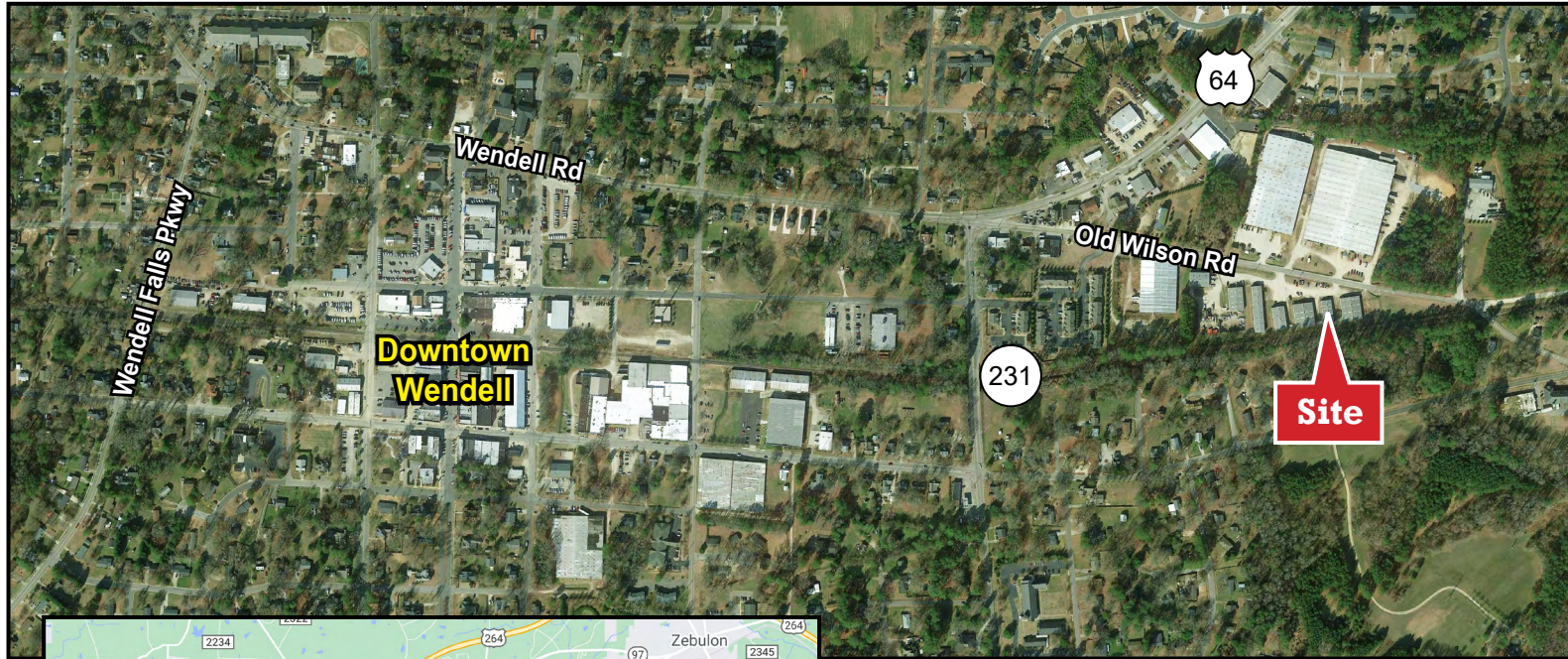
**Insight Property Group**

209 W. Millbrook Road  
Raleigh, NC 27609  
919.833.2200

# Conoley Industrial Park

Wendell, North Carolina

FOR LEASE



For more information, please contact:

**Jimmy Woody** • 919.833.2213 • [jwoody@insightpropertygroup.com](mailto:jwoody@insightpropertygroup.com)

209 W. Millbrook Road  
Raleigh, NC 27609  
919.833.2200

# Conoley Industrial Park

Wendell, North Carolina

FOR LEASE



*For more information, please contact:*

**Jimmy Woody** • 919.833.2213 • [jwoody@insightpropertygroup.com](mailto:jwoody@insightpropertygroup.com)

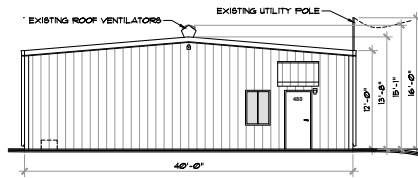
209 W. Millbrook Road  
Raleigh, NC 27609  
919.833.2200

# Conoley Industrial Park

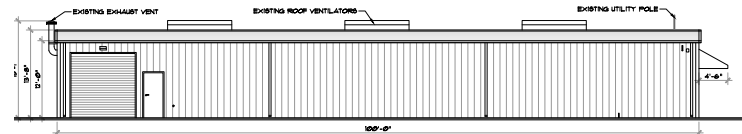
Wendell, North Carolina

FOR LEASE

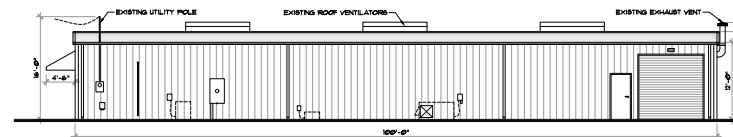
## Building 480 - 4,000 SF



1 NORTH ELEVATION  
SCALE: 1/8" = 1'-0"

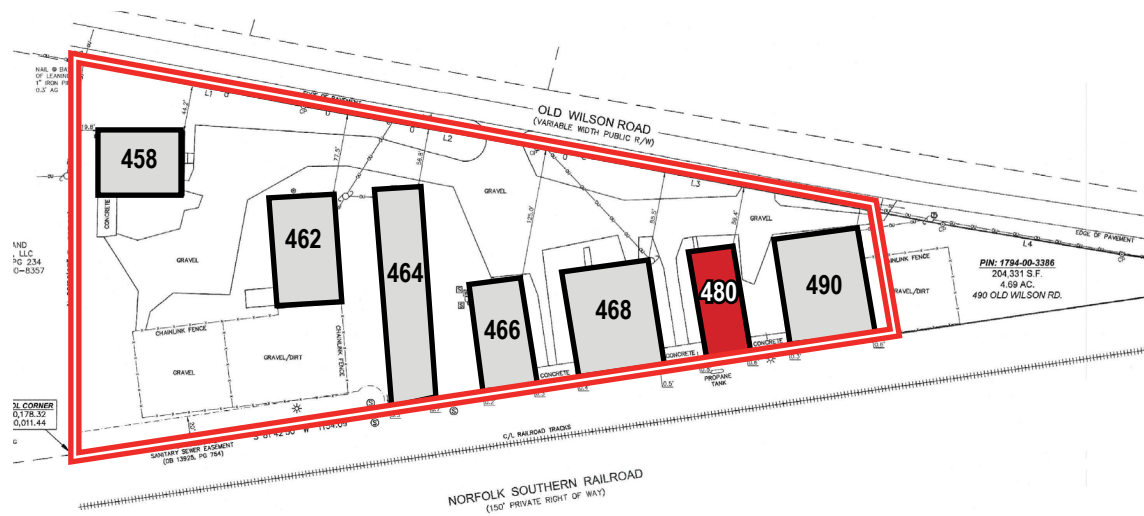


2 WEST ELEVATION  
SCALE: 1/8" = 1'-0"



4 EAST ELEVATION  
SCALE: 1/8" = 1'-0"

## Site Plan



For more information, please contact:

**Jimmy Woody** • 919.833.2213 • [jwoody@insightpropertygroup.com](mailto:jwoody@insightpropertygroup.com)

209 W. Millbrook Road  
Raleigh, NC 27609  
919.833.2200