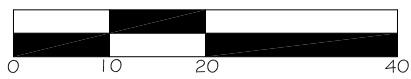


PLAT OF SURVEY

OF

LOTS 1, 2, 51, 52, 53, 54, 96 AND 97 IN THE SUBDIVISION OF
BLOCK 1 IN CANAL TRUSTEES SUBDIVISION IN COOK COUNTY, ILLINOIS.

Scale 1" = 20'



LEGAL DESCRIPTION:

PARCEL 1:

LOTS 51 (EXCEPT THE EAST 17 FEET THEREOF TAKEN FOR THE WIDENING OF ASHLAND AVENUE), 52, 53 AND 54 IN THE SUBDIVISION OF BLOCK 1 IN CANAL TRUSTEES' SUBDIVISION OF THE EAST 1/2 OF THE NORTHEAST 1/4 OF SECTION 7, TOWNSHIP 39 NORTH, RANGE 14 EAST OF THE THIRD PRINCIPAL MERIDIAN, IN COOK COUNTY, ILLINOIS.

P.I.N. : 17-07-207-022
17-07-207-023
17-07-207-024

PARCEL 2:

LOTS 1 AND 2 (EXCEPT THAT PART OF SAID LOTS LYING EAST OF A LINE 50 FEET WEST OF AND PARALLEL WITH THE EAST LINE OF SAID SECTION 7) IN THE SUBDIVISION OF LOTS 98, 99 AND 100 IN BLOCK 1 IN CANAL TRUSTEES' SUBDIVISION OF THE NORTH 1/2 OF THE NORTHEAST 1/4 OF SECTION 7, TOWNSHIP 39 NORTH, RANGE 14 EAST OF THE THIRD PRINCIPAL MERIDIAN, IN COOK COUNTY, ILLINOIS.

P.I.N. : 17-07-207-046
17-07-207-047

PARCEL 3:

LOTS 96 AND 97 IN HAMILTON'S SUBDIVISION OF BLOCK 1 IN CANAL TRUSTEES' SUBDIVISION OF SECTION 7, TOWNSHIP 39 NORTH, RANGE 14 EAST OF THE THIRD PRINCIPAL MERIDIAN, IN COOK COUNTY, ILLINOIS.

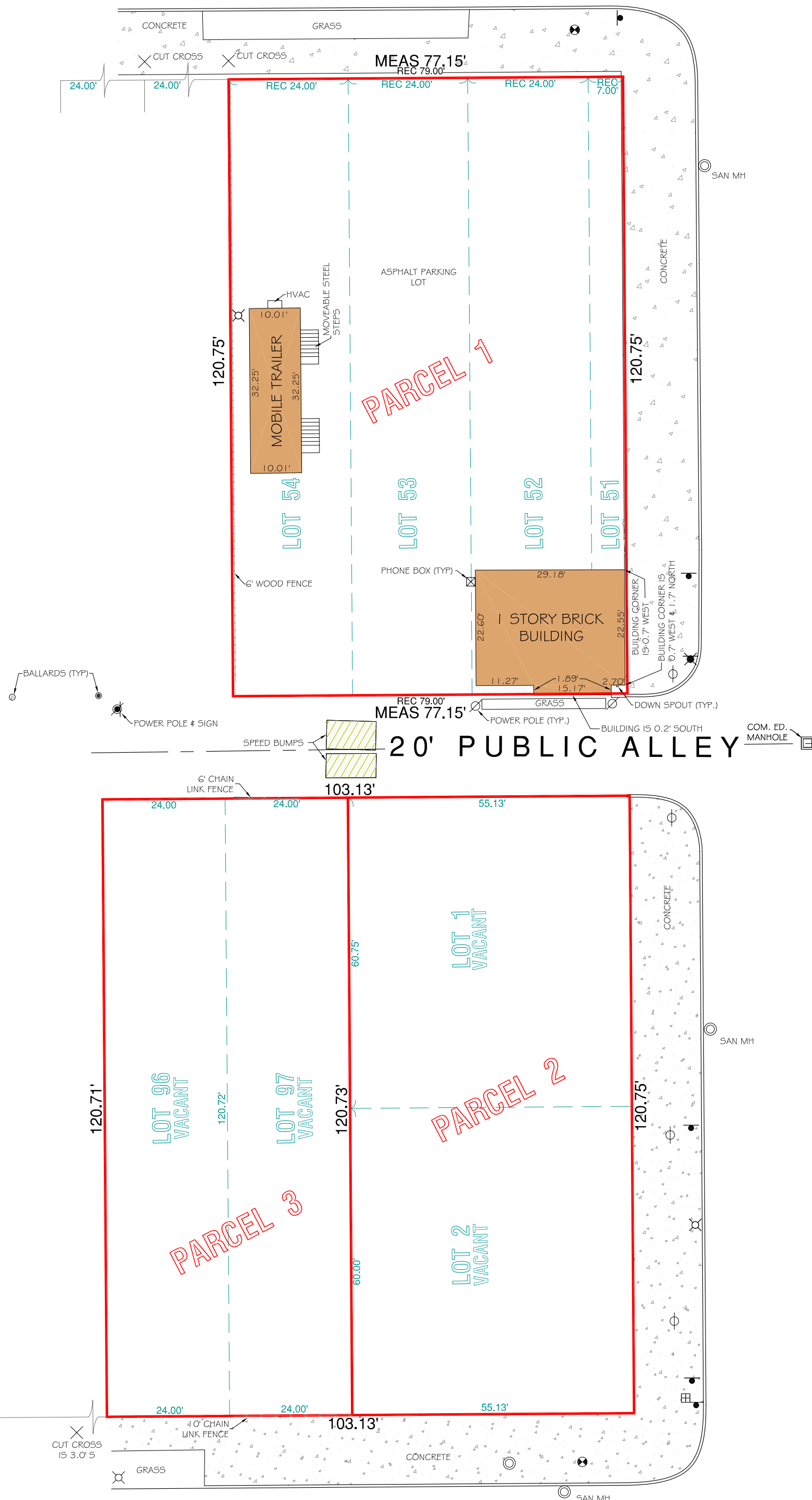
P.I.N. : 17-07-207-044
17-07-207-045

WEST SUPERIOR STREET

NORTH ASHLAND

NORTH ASHLAND

HURON STREET



LEGEND

- = BOUNDARY
- = WOOD FENCE
- = CHAIN LINK FENCE
- = FOUND SURVEY MARKER
- ⊕ = GAS VALVE
- = STEEL BALLARD
- = CONCRETE BALLARD
- ☒ = PHONE BOX
- ⊕ = WATER VAULT BOX
- ⊙ = MANHOLE
- ⊕ = POWER POLE
- ⊕ = LIGHT POST
- ⊕ = SIGN
- ⊕ = MAIL BOX

STATE OF ILLINOIS)
)S.S.
COUNTY OF KANE)

THIS IS TO CERTIFY THAT THE PLAT SHOWN HEREON IS A CORRECT REPRESENTATION OF A SURVEY PERFORMED AT AND UNDER MY DIRECTION. THIS PROFESSIONAL SERVICE CONFORMS TO THE CURRENT ILLINOIS MINIMUM STANDARDS FOR A BOUNDARY SURVEY. ALL DIMENSIONS SHOWN ARE IN FEET AND DECIMAL PARTS THEREOF.

GIVEN UNDER MY HAND AND SEAL THIS 29TH DAY OF NOVEMBER, A.D. 2007.

JOHN TANER SAJHOGLU
ILLINOIS PROFESSIONAL LAND SURVEYOR NO. 3317
LICENSE EXPIRES 11/08

Horizon Consulting Group

PROFESSIONAL DESIGN FIRM
LAND SURVEYING CORPORATION #184-003352

44 W 540 KESLINGER ROAD Tel: (630) 365-4100
ELBURN, ILLINOIS 60119 (815) 754-7755
WWW.HORIZONSURVEYING.COM (888) 754-7755
Fax: (630) 365-4103

PLAT OF SURVEY

OF

LOTS 1, 2, 51, 52, 53, 54, 96 AND 97 IN THE
SUBDIVISION OF BLOCK 1 IN CANAL TRUSTEES
SUBDIVISION IN COOK COUNTY, ILLINOIS.

PREPARED FOR:

AMERICAN EAGLE BANK
556 RANDALL ROAD
SUITE 1800
SOUTH ELGIN, ILLINOIS 60177

FIELD DATE:
11/26/2007

CHECKED BY:
JTS

DRAWN BY:
VE

JOB #
5805