

PROFESSIONAL / MEDICAL OFFICE

SUITE 401 FOR LEASE

3663 E Sunset Rd Las Vegas, NV 89120



LEASE RATE \$2.00 SF

CAMS \$.37/ SF

Jerry Steklachick
(702) 518-2526

©2023 Coldwell Banker. All Rights Reserved. Coldwell Banker Commercial® and the Coldwell Banker Commercial logos are trademarks of Coldwell Banker Real Estate LLC. The Coldwell Banker® System is comprised of company owned offices which are owned by a subsidiary of Anywhere Advisors LLC and franchised offices which are independently owned and operated. The Coldwell Banker System fully supports the principles of the Equal Opportunity Act.



COLDWELL BANKER
COMMERCIAL
PREMIER



SUITE OVERVIEW

Ideally used for a pediatric dental practice, this suite features a spacious reception and family waiting area, plus a large open-bay treatment room designed for carousel-style dentistry with plumbing and power for two central sink pods, each supporting five chairs. The layout includes four private operatories with chair hookups, two private offices, a wet lab, two restrooms, and a large employee break room, supporting efficient workflow and high-volume pediatric care.

Also suitable for medical, professional or general office use with minor modifications.

Jerry Steklachick
(702) 518-2526



SUITE 401

3663 E SUNSET RD

LEASE



PROPERTY DESCRIPTION

Now leasing at Sunset Professional Park—an established, Green Valley-adjacent office and professional complex on East Sunset Road. Ideal for dental, medical, and professional office users, the property offers a range of suite sizes with flexible layouts to accommodate a variety of practice needs. Tenants benefit from high visibility with over 37,000 vehicles passing daily and ample on-site parking. Conveniently located just 2.5 miles from the 215 Beltway, the property offers easy access to nearby neighborhoods including Green Valley, Paradise, Silverado Ranch, and Henderson, as well as McCarran Airport and the Las Vegas Strip. Join a strong mix of healthcare and professional tenants in a well-maintained setting designed for long-term success.

Jerry Steklachick
(702) 518-2526

OFFERING SUMMARY

Lease Rate:	\$2.00 SF (NN)
CAMs:	\$.37/SF
Suite 502:	2,875 SF

DEMOGRAPHICS	1 MILE	3 MILES	5 MILES
Total Households	4,557	61,499	171,619
Total Population	10,431	153,080	419,471
Average HH Income	\$89,942	\$91,176	\$86,301



COLDWELL BANKER
COMMERCIAL
PREMIER

SUNSET PROFESSIONAL PARK 3663 E SUNSET RD

LEASE



Jerry Steklachick
(702) 518-2526



COLDWELL BANKER
COMMERCIAL
PREMIER

INTERIOR PHOTOS

SUITE 401
3663 E Sunset Rd



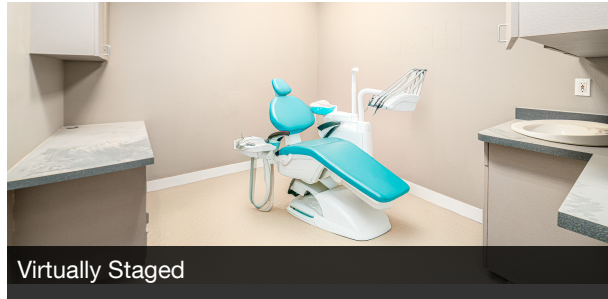
Reception



Open Pediatric Area



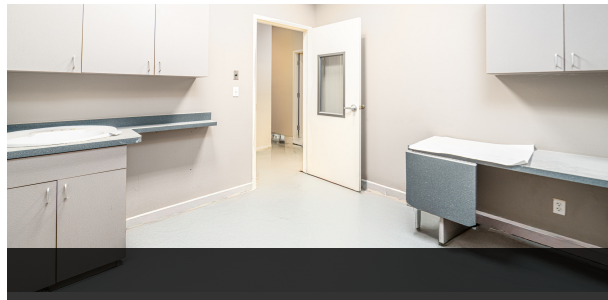
Open Pediatric Area



Virtually Staged



Virtually Staged



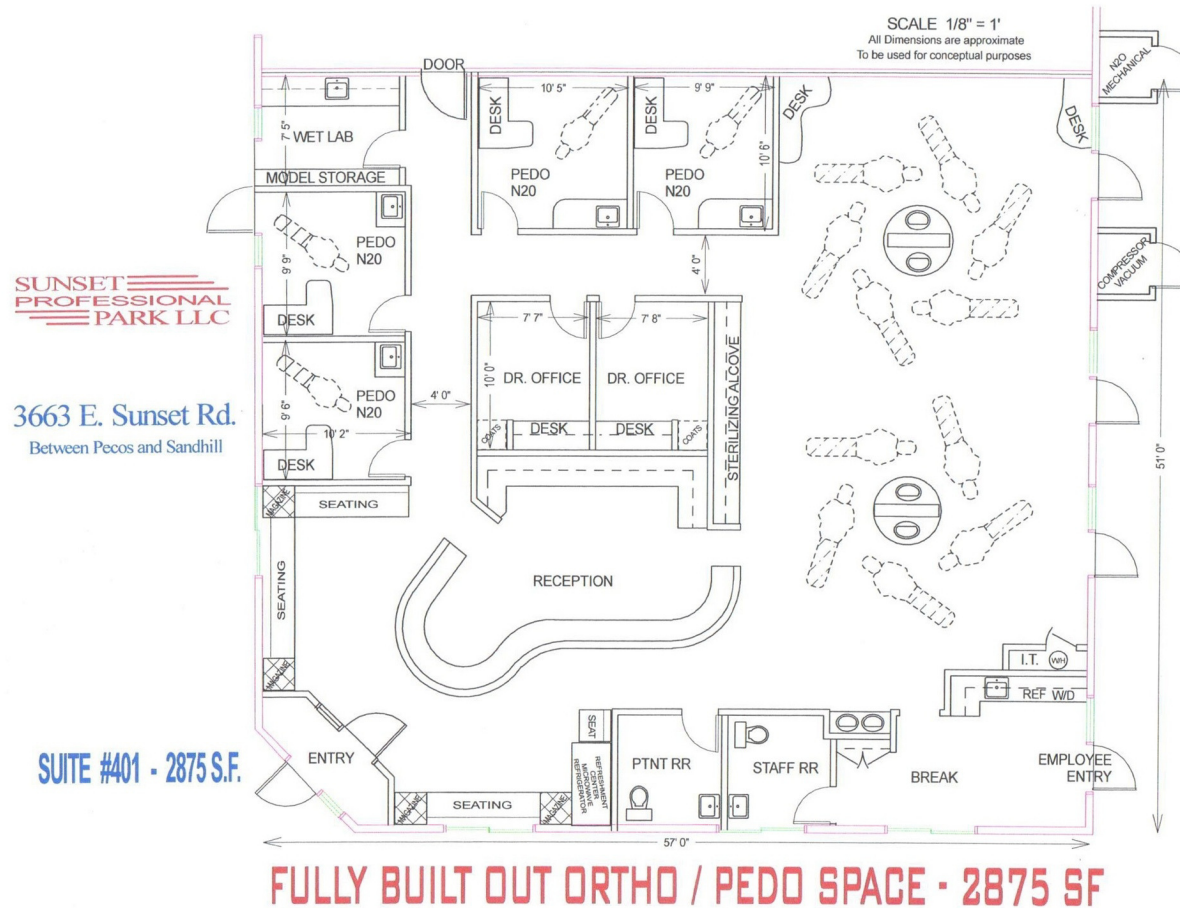
Jerry Steklachick
(702) 518-2526



SUITE 401

3663 E SUNSET RD

LEASE



Suite 502 has a versatile layout combining private offices, open offices and a glassed walled conference room with a reception area.

Jerry Steklachick
(702) 518-2526



COLDWELL BANKER
COMMERCIAL
PREMIER

LOCATION

3663 E SUNSET RD

LEASE



Jerry Steklachick
(702) 518-2526



DEMOGRAPHICS

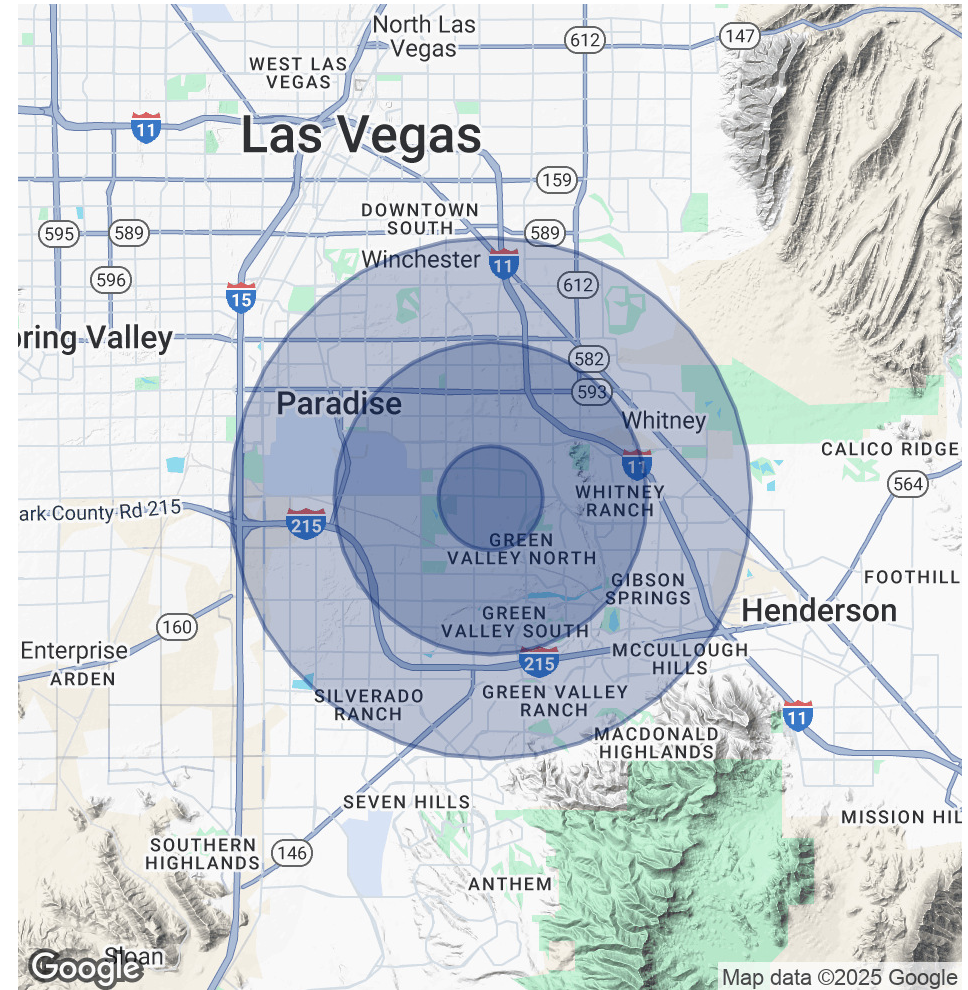
3663 E SUNSET RD

LEASE

POPULATION	1 MILE	3 MILES	5 MILES
Total Population	10,431	153,080	419,471
Average Age	42	42	41
Average Age (Male)	41	41	40
Average Age (Female)	43	42	42

HOUSEHOLDS & INCOME	1 MILE	3 MILES	5 MILES
Total Households	4,557	61,499	171,619
# of Persons per HH	2.3	2.5	2.4
Average HH Income	\$89,942	\$91,176	\$86,301
Average House Value	\$609,944	\$466,471	\$426,804

Demographics data derived from AlphaMap



Jerry Steklachick
(702) 518-2526

