

+/- 13,914 SF FOR SALE

1951 East 3rd St  
Corinth, MS 38834



## MORTUARY/FUNERAL HOME SPACE

+/- 2.01 Acres

A unique opportunity to acquire a  $\pm 13,914$  SF facility (former funeral home) situated on approximately 2.0 acres in Corinth, Mississippi. Positioned along East 3rd Street, the property offers a well-located site with existing improvements, expandable parking, and a building that has been operationally maintained over the years. The facility features a large lobby/reception area, numerous private rooms and offices, multiple chapels, multiple kitchens, and flexible interior space suited for a variety of uses. Whether for continued operation, adaptive reuse, or redevelopment, this property presents a highly functional opportunity in one of North Mississippi's key regional service hubs, drawing from a broad surrounding market and offering strong potential for an owner-user, investor, or redevelopment-minded buyer.

### PROPERTY HIGHLIGHTS

- Property Type: Funeral Home/Mortuary (Commercial)
- Building Size: 13,914 SF
- Property: 2.01 Acres
- Year Built: 1978
- Roof Material: Metal
- Lot Depth: 2,000 ft
- Lot Frontage: 4,400 ft
- Parking on site with additional parking available for lease.



**Caleb Park, SIOR**  
Vice President  
901 362 3454  
901 239 3623  
cpark@commadv.com

5101 Wheelis Drive, Suite 300  
Memphis, TN 38117  
Main: 901 366 6070  
[www.commadv.com](http://www.commadv.com)

*Independently Owned and Operated / A Member of the Cushman & Wakefield Alliance*

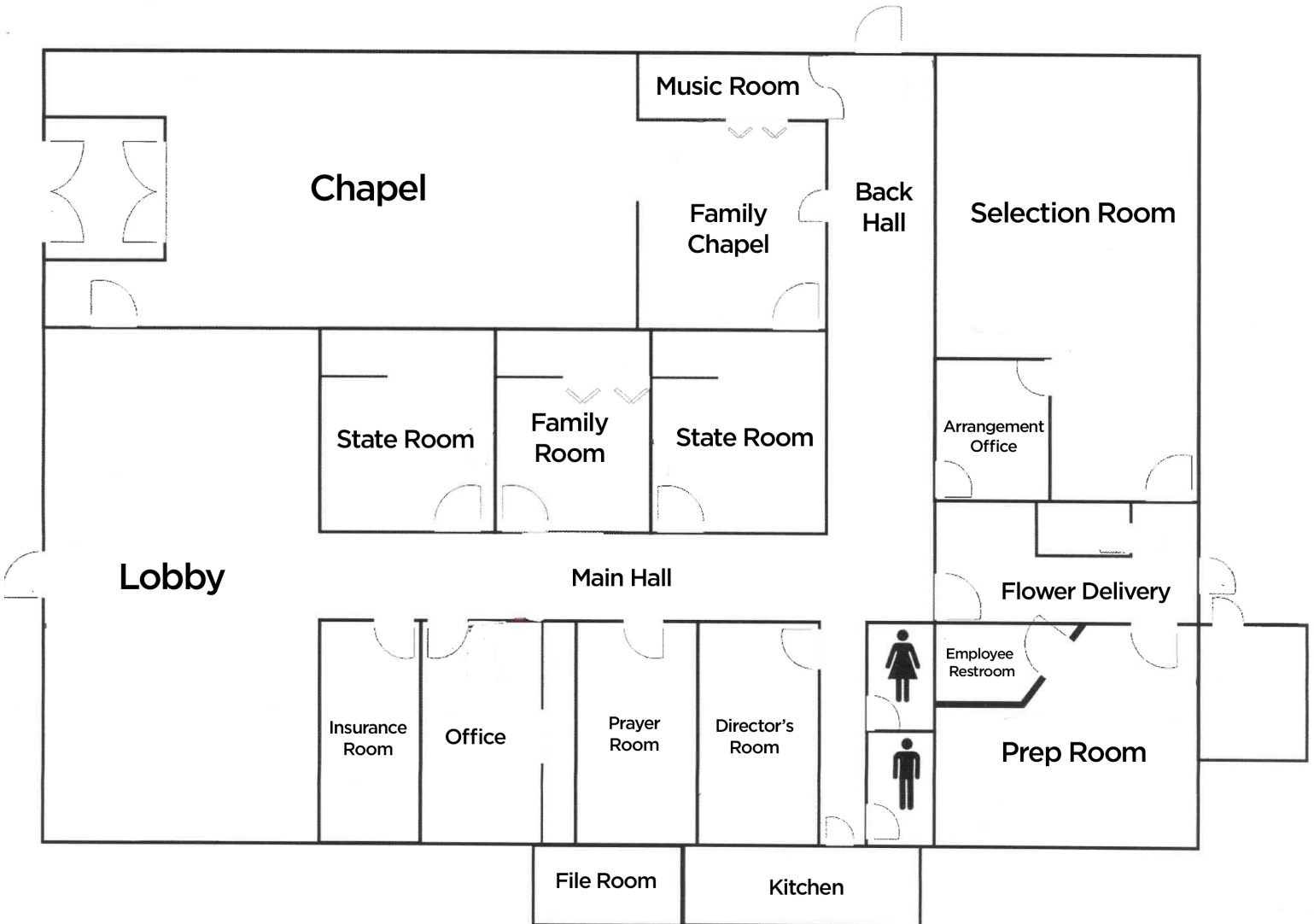
Cushman & Wakefield Copyright 05/05/26. No warranty or representation, express or implied, is made to the accuracy or completeness of the information contained herein, and same is submitted subject to errors, omissions, change of price, rental or other conditions, withdrawal without notice, and to any special listing conditions imposed by the property owner(s). As applicable, we make no representation as to the condition of the property (or properties) in question.

+/- 13,914 SF FOR SALE

1951 East 3rd St  
Corinth, MS 38834



## FLOOR PLAN



**Caleb Park, SIOR**  
Vice President  
901 362 3454  
901 239 3623  
cpark@commadv.com

5101 Wheelis Drive, Suite 300  
Memphis, TN 38117  
Main: 901 366 6070  
[www.commadv.com](http://www.commadv.com)

*Independently Owned and Operated / A Member of the Cushman & Wakefield Alliance*

Cushman & Wakefield Copyright 05/05/26. No warranty or representation, express or implied, is made to the accuracy or completeness of the information contained herein, and same is submitted subject to errors, omissions, change of price, rental or other conditions, withdrawal without notice, and to any special listing conditions imposed by the property owner(s). As applicable, we make no representation as to the condition of the property (or properties) in question.

+/- 13,914 SF FOR SALE

1951 East 3rd St  
Corinth, MS 38834



CUSHMAN &  
WAKEFIELD



COMMERCIAL  
ADVISORS

## PROPERTY PHOTOS



### Caleb Park, SIOR

Vice President

901 362 3454

901 239 3623

[cpark@commadv.com](mailto:cpark@commadv.com)

*Independently Owned and Operated / A Member of the Cushman & Wakefield Alliance*

Cushman & Wakefield Copyright 05/05/26. No warranty or representation, express or implied, is made to the accuracy or completeness of the information contained herein, and same is submitted subject to errors, omissions, change of price, rental or other conditions, withdrawal without notice, and to any special listing conditions imposed by the property owner(s). As applicable, we make no representation as to the condition of the property (or properties) in question.

5101 Wheelis Drive, Suite 300

Memphis, TN 38117

Main: 901 366 6070

[www.commadv.com](http://www.commadv.com)