

SOUTHWEST CROSSING

4510-4512 ENGLEWOOD AVE.
LUBBOCK, TX 79414

OFFICE SPACE FOR LEASE



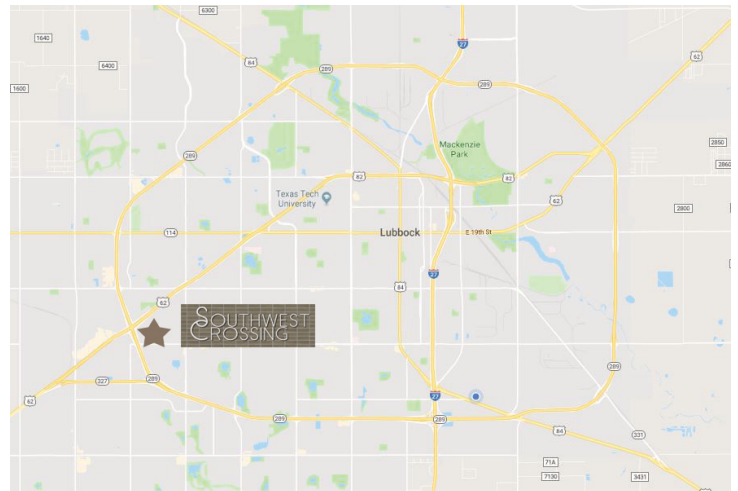
DETAILED SUMMARY

LEASE RATE	\$10.00/SF NNN
EST. NNN's	\$2.50/SF/year
SUITE SF	3,412 SF
RESTROOMS	1 Men's 1 Women's 1 ADA



PROPERTY COMMENTS

Recently renovated office space for lease. Good mix of private offices and large workrooms and storage areas. Unit has two front entrances and two rear alley doors including a large double door. Large amount of cabinets throughout. Space could be modified to suit a flex type use. Ample parking and well lit lot. Convenient location at West Loop 289 and Marsha Sharp Fwy.



Wilkerson

PROPERTIES INC.

Commercial & Industrial Real Estate Services

Will Wilkerson 214.843.8221

will@wilkersonproperties.com

SOUTHWEST CROSSING

4510-4512 ENGLEWOOD AVE.
LUBBOCK, TX 79414

OFFICE SPACE FOR LEASE



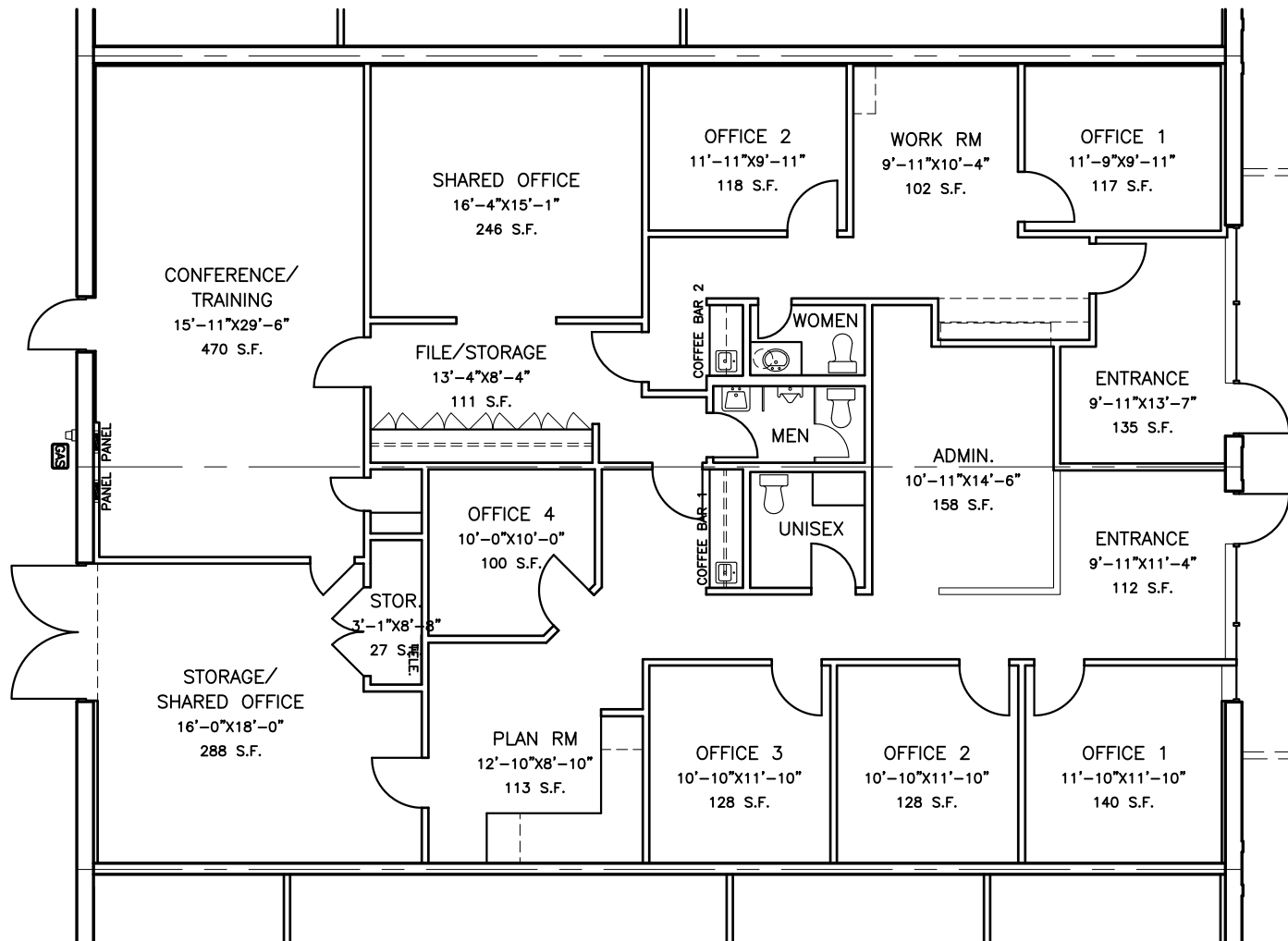
Wilkerson

PROPERTIES INC.

Commercial & Industrial Real Estate Services

Will Wilkerson 214.843.8221

will@wilkersonproperties.com



FLOOR PLAN

SCALE: 3/32" = 1'-0"

3,412.5 S.F.

Wilkerson

PROPERTIES INC.

Commercial & Industrial
Development, Management & Brokerage
Phone: (806) 474-2223
Fax: (806) 474-2216
501 E. 66th Street
Lubbock, Texas 79404

SOUTHWEST CROSSING
4510-4512 ENGLEWOOD
Lubbock, Texas 79414

Date: 07/18/2018
Drawn by: JWT, GP
Checked by:

Rev: 07/31/2018

A1