



1485

1455

FOR LEASE

1455-1485 NORTHPARK DR.
WESTON, FL 33326

VILLAGE PLAZA OF WESTON OFFICE CAMPUS

STL
COMMERCIAL

OVERVIEW

Incredible opportunity to lease a premier office property in the heart of Weston. The Village Plaza of Weston is ideally located on a scenic lakefront setting with immediate access to Weston Road, major highways, shopping, restaurants, and nearby amenities.

The property consists of two separate two story office buildings. The North Building (1455 Northpark Drive) contains approximately 10,817 SF of rentable office space and the South Building (1485 Northpark Drive) contains approximately 21,087 SF. Spaces can be leased individually or together for tenants seeking a larger full campus environment.

The buildings feature a mix of private offices, conference rooms, open bullpen areas, semi private offices, kitchens, and restrooms, providing flexibility for a wide range of office users. This is a rare opportunity to establish a presence in one of South Florida's most desirable business and residential communities.

SITE SUMMARY

LEASE RATE: \$30 PSF + NNN

LENGTH OF TERM: Negotiable

PARKING: 4 Spaces / 1,000 SF Ratio

AVAILABLE: Immediately

HIGHLIGHTS

- FOR LEASE: NORTH BUILDING (1485 NORTH PARK DR) - 21,087 SF
- FOR LEASE : SOUTH BUILDING (1455 NORTH PARK DR) - 10,817 SF
- CAN BE LEASED INDIVIDUALLY OR TOGETHER
- AMPLE PARKING: 4 SPACES / 1,000 SF RATIO
- IMMEDIATE OCCUPANCY AVAILABLE
- EXCELLENT ACCESS TO I-75, I-595, SAWGRASS EXPRESSWAY



1455-1485 NORTH PARK DRIVE - WESTON, FL 33326

MAX LORIA | MANAGING BROKER | 561.901.1402

DAVID RICHMAN | VP INVESTMENT SALES | 847.772.7159

JASON KAPIT, ESQ. | REAL ESTATE ADVISOR | 954.650.4443

This information has been obtained from sources believed reliable. We have not verified it and make no guarantee, warranty or representation about it.

AERIAL IMAGE



**1485 NORTHPARK DRIVE
21,087 SF AVAILABLE**



**1455 NORTHPARK DRIVE
10,187 SF AVAILABLE**

1455-1485 NORTHPARK DRIVE - WESTON, FL 33326

MAX LORIA | MANAGING BROKER | 561.901.1402

DAVID RICHMAN | VP INVESTMENT SALES | 847.772.7159

JASON KAPIT, ESQ. | REAL ESTATE ADVISOR | 954.650.4443

This information has been obtained from sources believed reliable. We have not verified it and make no guarantee, warranty or representation about it.

1455 NORTHPARK DRIVE - 10,187 SF AVAILABLE



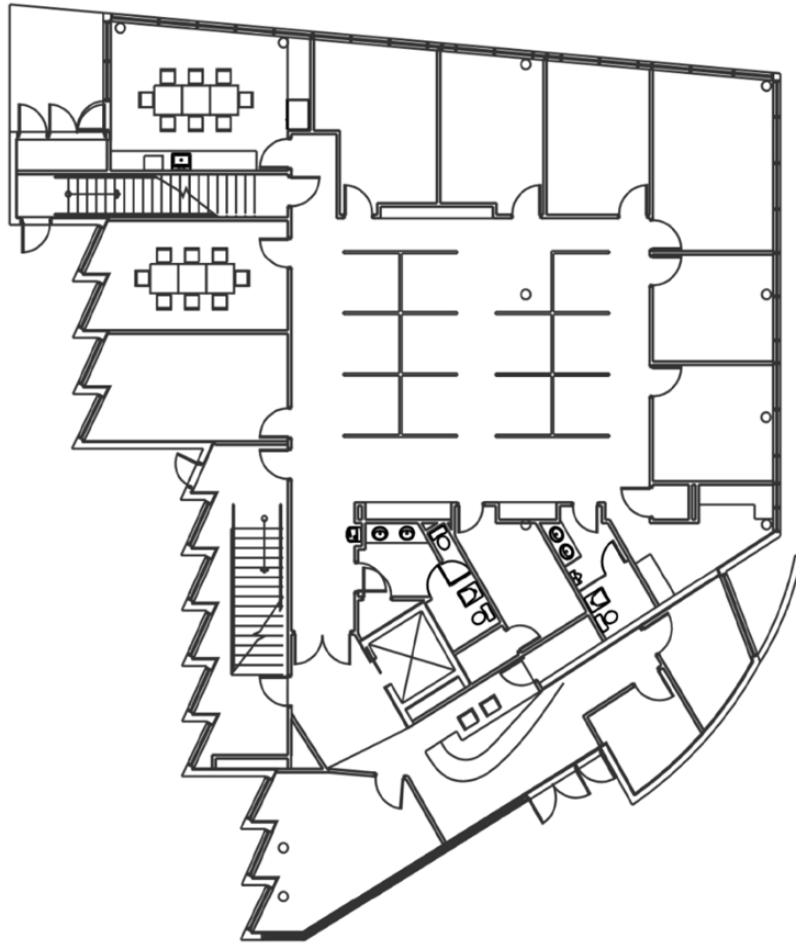
1455-1485 NORTHPARK DRIVE - WESTON, FL 33326

MAX LORIA | MANAGING BROKER | 561.901.1402
DAVID RICHMAN | VP INVESTMENT SALES | 847.772.7159
JASON KAPIT, ESQ. | REAL ESTATE ADVISOR | 954.650.4443

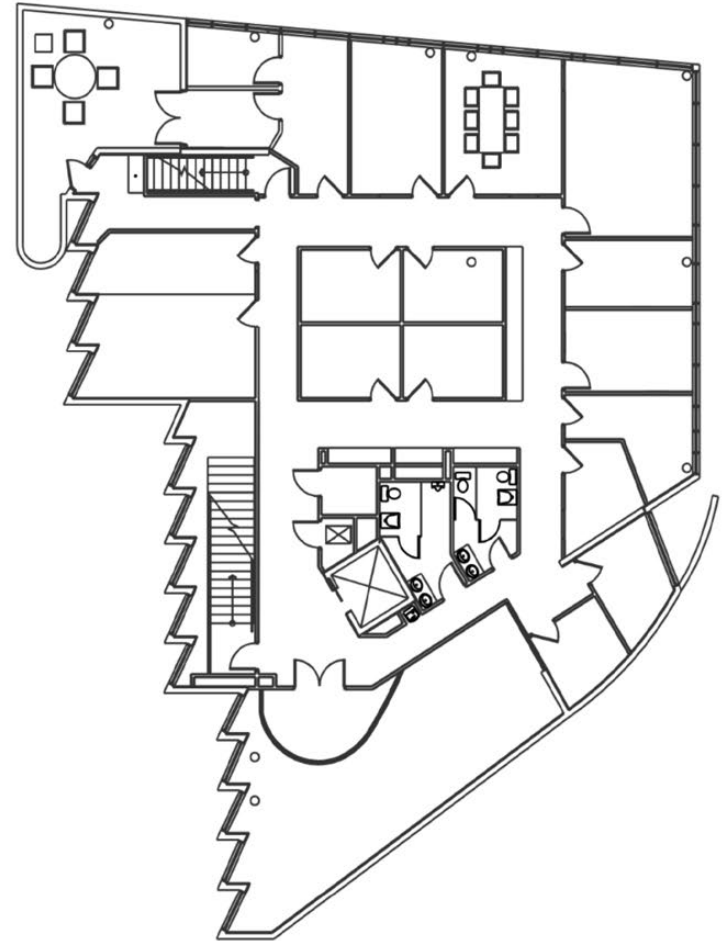
This information has been obtained from sources believed reliable. We have not verified it and make no guarantee, warranty or representation about it.

1455 NORTH PARK DRIVE FLOORPLANS

FIRST FLOOR



SECOND FLOOR

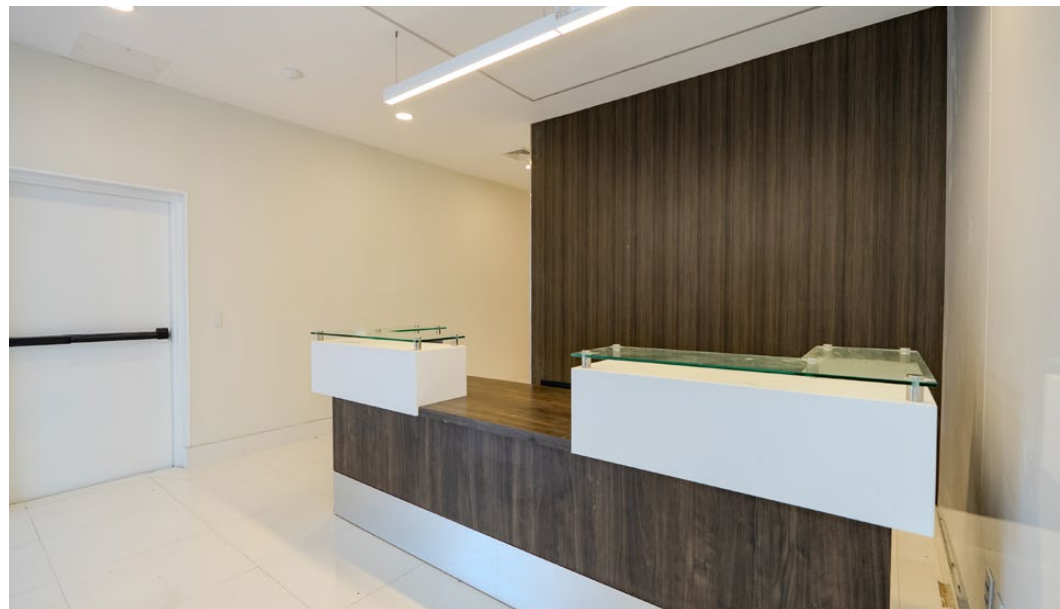
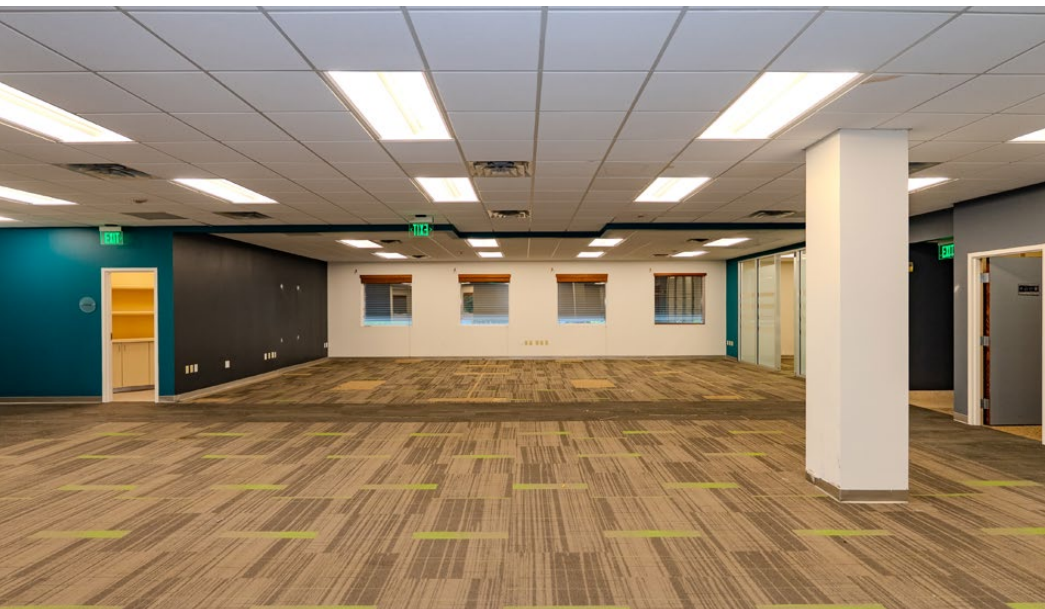


1455-1485 NORTHPARK DRIVE - WESTON, FL 33326

MAX LORIA | MANAGING BROKER | 561.901.1402
DAVID RICHMAN | VP INVESTMENT SALES | 847.772.7159
JASON KAPIT, ESQ. | REAL ESTATE ADVISOR | 954.650.4443

This information has been obtained from sources believed reliable. We have not verified it and make no guarantee, warranty or representation about it.

1485 NORTHPARK DRIVE - 21,087 SF AVAILABLE



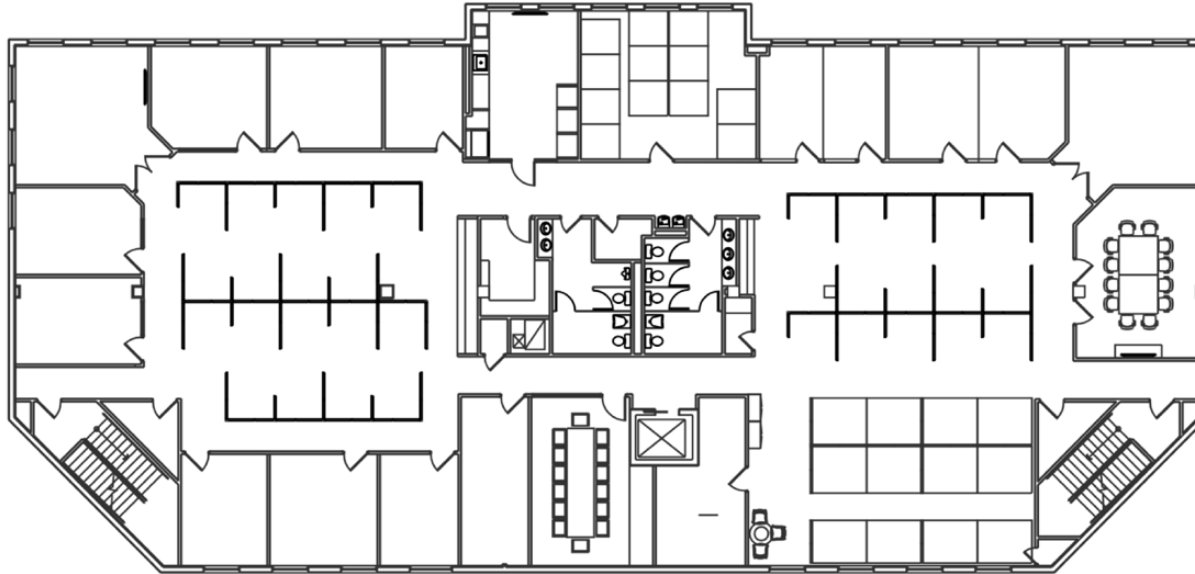
1455-1485 NORTHPARK DRIVE - WESTON, FL 33326

MAX LORIA | MANAGING BROKER | 561.901.1402
DAVID RICHMAN | VP INVESTMENT SALES | 847.772.7159
JASON KAPIT, ESQ. | REAL ESTATE ADVISOR | 954.650.4443

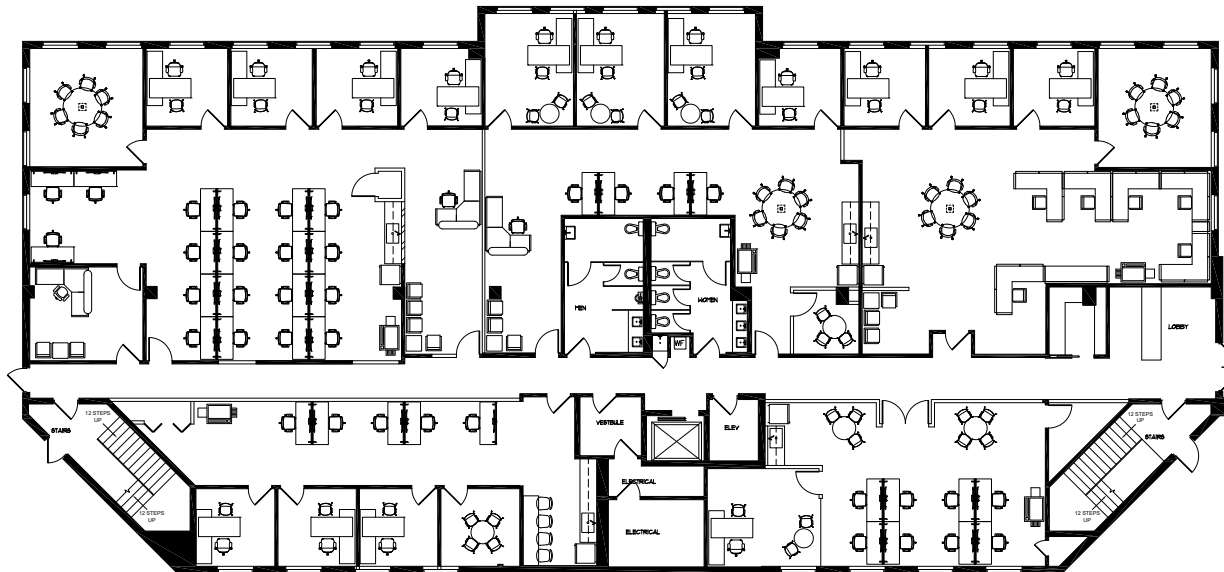
This information has been obtained from sources believed reliable. We have not verified it and make no guarantee, warranty or representation about it.

1485 NORTHPARK DRIVE FLOORPLANS

FIRST FLOOR



SECOND FLOOR



1455-1485 NORTHPARK DRIVE - WESTON, FL 33326

MAX LORIA | MANAGING BROKER | 561.901.1402
DAVID RICHMAN | VP INVESTMENT SALES | 847.772.7159
JASON KAPIT, ESQ. | REAL ESTATE ADVISOR | 954.650.4443

This information has been obtained from sources believed reliable. We have not verified it and make no guarantee, warranty or representation about it.

1455-1485 NORTHPARK DRIVE - TOTAL 31,904 SF AVAILABLE



1455-1485 NORTHPARK DRIVE - WESTON, FL 33326

MAX LORIA | MANAGING BROKER | 561.901.1402

DAVID RICHMAN | VP INVESTMENT SALES | 847.772.7159

JASON KAPIT, ESQ. | REAL ESTATE ADVISOR | 954.650.4443

This information has been obtained from sources believed reliable. We have not verified it and make no guarantee, warranty or representation about it.

LOCATION OVERVIEW



SUBJECT SPACE

INDIAN TRACE ROAD

WESTON ROAD

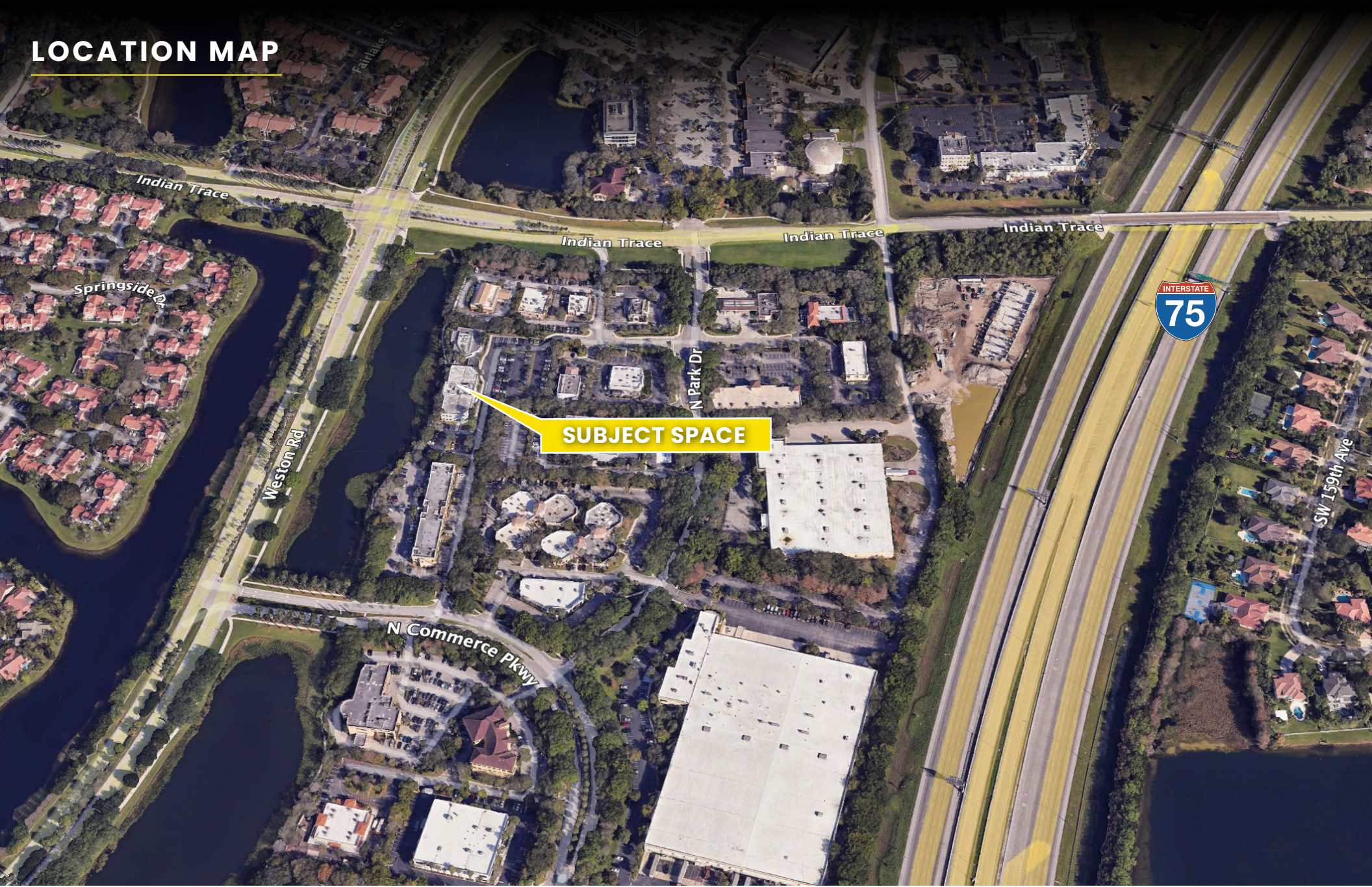
1455-1485 NORTHPARK DRIVE - WESTON, FL 33326

MAX LORIA | MANAGING BROKER | 561.901.1402
DAVID RICHMAN | VP INVESTMENT SALES | 847.772.7159
JASON KAPIT, ESQ. | REAL ESTATE ADVISOR | 954.650.4443

This information has been obtained from sources believed reliable. We have not verified it and make no guarantee, warranty or representation about it.



LOCATION MAP



1455-1485 NORTHPARK DRIVE - WESTON, FL 33326

MAX LORIA | MANAGING BROKER | 561.901.1402

DAVID RICHMAN | VP INVESTMENT SALES | 847.772.7159

JASON KAPIT, ESQ. | REAL ESTATE ADVISOR | 954.650.4443

This information has been obtained from sources believed reliable. We have not verified it and make no guarantee, warranty or representation about it.



MAX LORIA
MANAGING BROKER
MAX@STL-ADVISORS.COM
561.901.1402

DAVID RICHMAN
VP INVESTMENT SALES
DAVID@STL-ADVISORS.COM
847.772.7159

JASON KAPIT, ESQ.
REAL ESTATE ADVISOR
JASON@OFFMARKET.MEDIA
954.650.4443