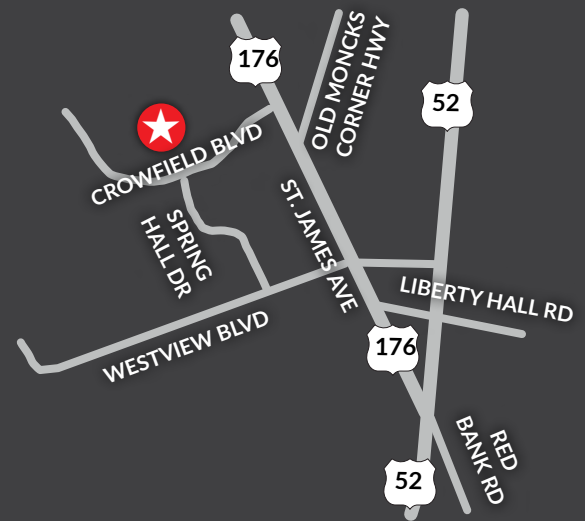


OFFICE FOR LEASE in Crowfield Executive Park

118 Springhall Drive | Goose Creek SC 29445

- Located within the Crowfield Executive Park in Goose Creek
- This is a well laid out office suite which includes a waiting area/reception, three private offices, a conference room plus a storage room and a restroom
- Great tenant mix to include medical, engineer and finance companies
- On-site parking
- Available immediately



LANDMARK
ENTERPRISES
COMMERCIAL REAL ESTATE

www.landmark-enterprises.com

*We obtained the information above from sources we believe to be reliable. However, we have not verified its accuracy and make no guarantee, warranty or representation about it. It is submitted subject to the possibility of errors, omissions, change of price, rental or other conditions, prior sale, lease or financing, or withdrawal without notice. We include projections, opinions, assumptions or estimates for example only, and they may not represent current or future performance of the property. You and your tax and legal advisors should conduct your own investigation of the property and transaction.



Jon Chalfie
VP of Brokerage
843-345-6000



Charlotte Fonvielle
Commercial Associate
843-860-9509

OFFICE SUITE FOR LEASE

in Crowfield Executive Park

OFFERING SUMMARY

PROPERTY ADDRESS: 118 Springhall Drive
Goose Creek SC 29445

TMS #: 243-03-00-011

COUNTY: Berkeley

AVAILABLE: Suite C – 1,024 SF - \$24/SF Modified Gross



118 SPRINGHALL DRIVE | GOOSE CREEK, SC 29445



LANDMARK
ENTERPRISES
COMMERCIAL REAL ESTATE

OFFICE SUITE FOR LEASE

in Crowfield Executive Park

DISTANCE MAP



118 SPRINGHALL DRIVE | GOOSE CREEK, SC 29445

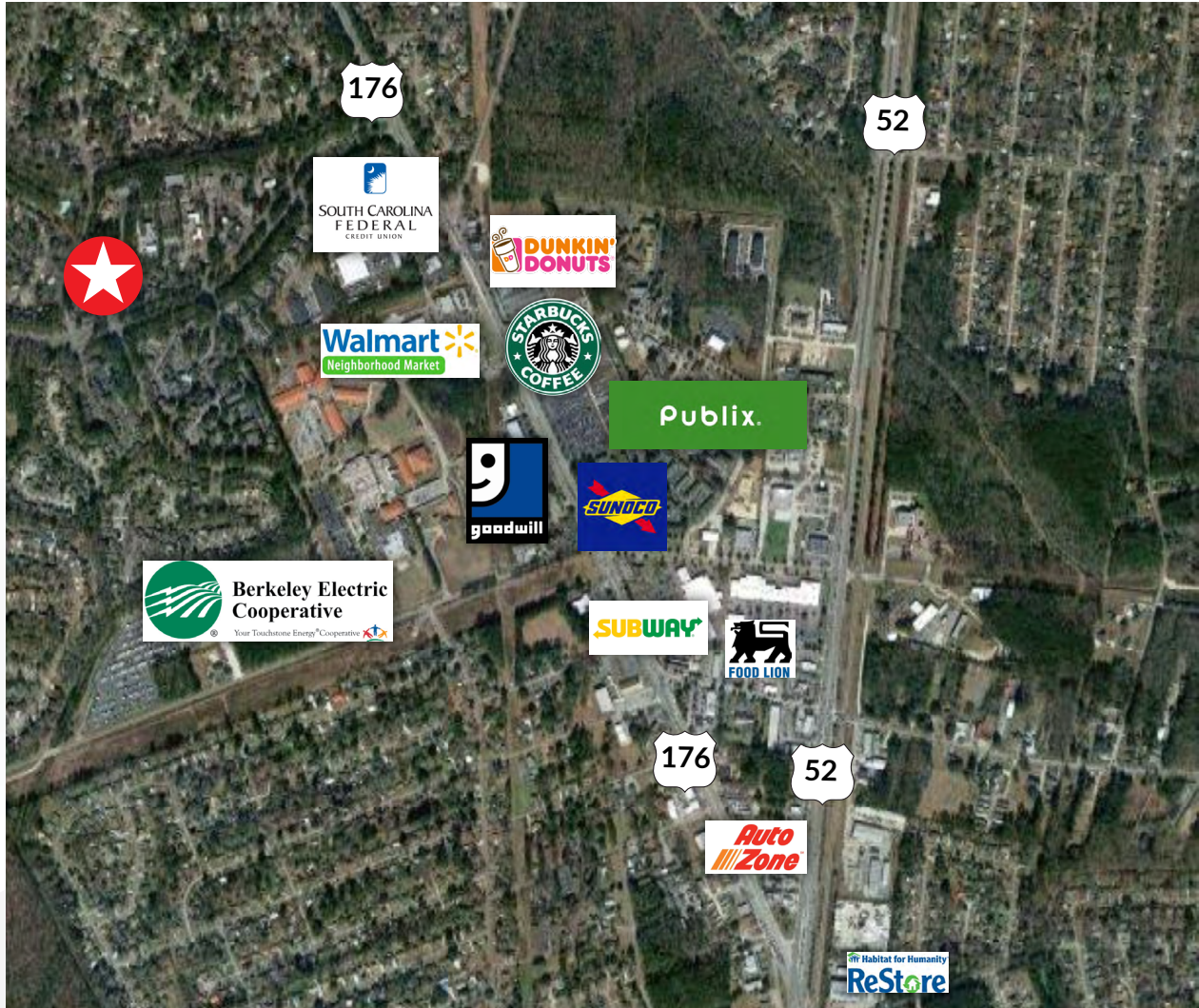


LANDMARK
ENTERPRISES
COMMERCIAL REAL ESTATE

OFFICE SUITE FOR LEASE

in Crowfield Executive Park

AERIAL MAP



118 SPRINGHALL DRIVE | GOOSE CREEK, SC 29445

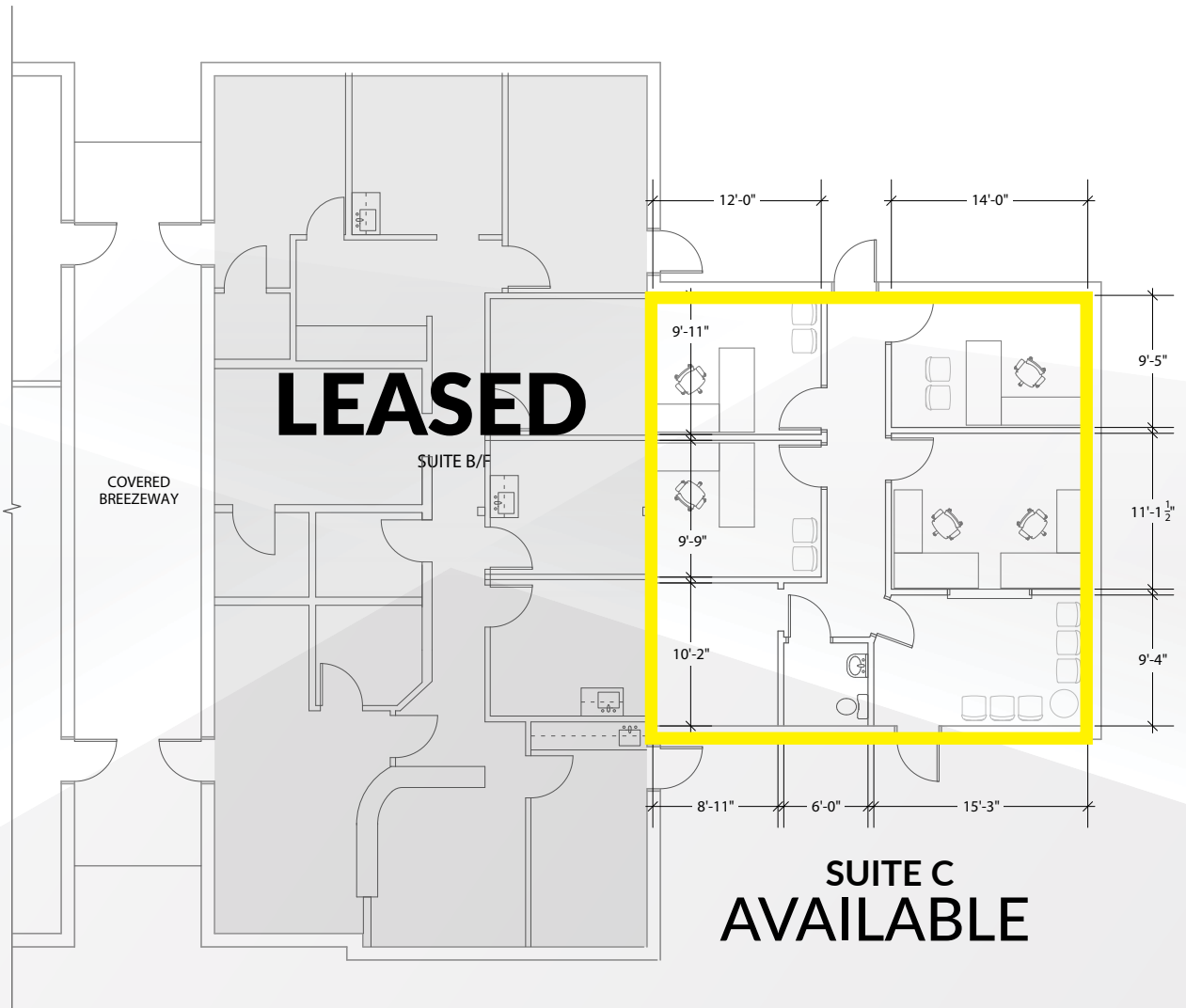


LANDMARK
ENTERPRISES
COMMERCIAL REAL ESTATE

OFFICE SUITE FOR LEASE

in Crowfield Executive Park

FLOOR PLAN



118 SPRINGHALL DRIVE | GOOSE CREEK, SC 29445



LANDMARK
ENTERPRISES
COMMERCIAL REAL ESTATE

OFFICE SUITE FOR LEASE

in Crowfield Executive Park



118 SPRINGHALL DRIVE | GOOSE CREEK, SC 29445



LANDMARK
ENTERPRISES
COMMERCIAL REAL ESTATE