

FOR LEASE

10010 - 105 Street  
Edmonton, AB

# Transition Place



**Cory Wosnack**  
Principal & Managing Director  
+1 780 909 7850  
cory.wosnack@avisonyoung.com

**Tori Sara**  
Team Lead, Client Services, Alberta  
+1 780 429 7561  
tori.sara@avisonyoung.com

**AVISON  
YOUNG**

**For Lease**

10010 - 105 Street, Edmonton AB

Area Available: Third floor

Rentable Area: 8,522 SF

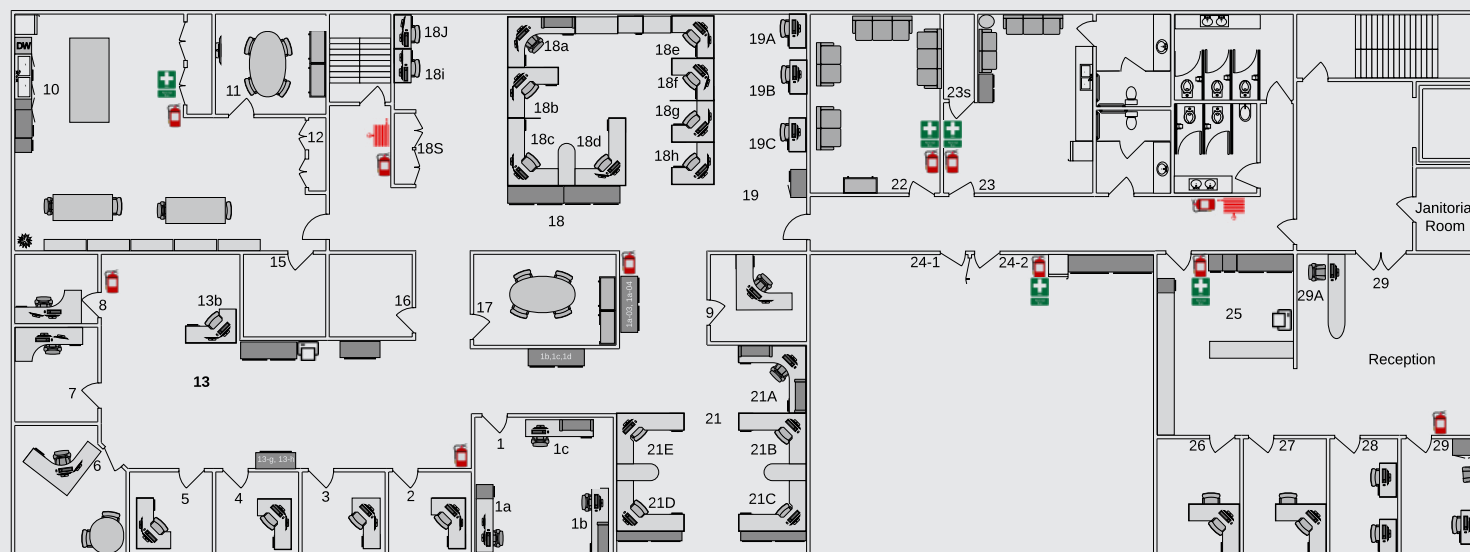
Rental Rate: \$7.00 PSF

Additional Rent: \$13.00 PSF

Parking: Up to 10 surface stalls  
\$200 per stall/month



**Floor Plan** 



# Nearby Services

- Restaurants / Cafés
- Services (Grocery, Retail, Banks)
- Hotels


**98**  
WALK SCORE  
/100


**90**  
BIKE SCORE  
/100

**86**  
TRANSIT SCORE  
/100



Located in the heart of downtown Edmonton, Transition Place benefits from great access and an abundance of nearby amenities. The area is well-connected by public transportation, ensuring easy access for employees and clients, with ample parking options nearby.

 Great location including frontage to 100 Avenue bike lane

 Abundance of cafés and restaurants within walking distance

## Get more information

**Cory Wosnack**  
Principal & Managing Director  
+1 780 909 7850  
cory.wosnack@avisonyoung.com

**Tori Sara**  
Team Lead, Client Services, Alberta  
+1 780 429 7561  
tori.sara@avisonyoung.com