

SUITE 292 – W | 1,954 SF

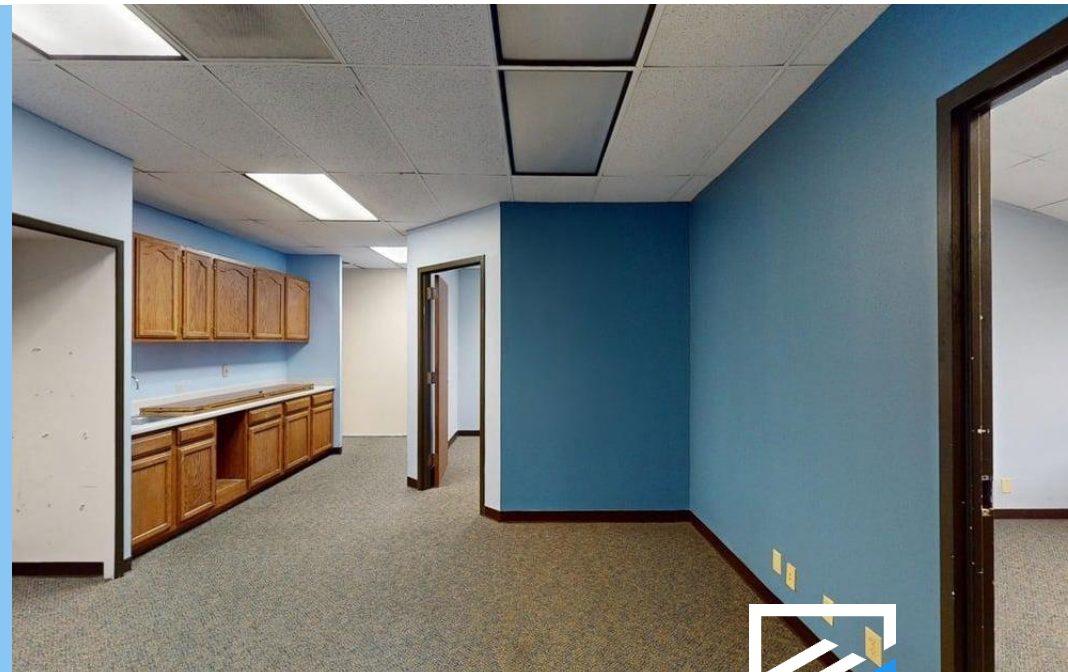
Located at 6800 Park Ten Blvd, Suite 292-West, in San Antonio, Texas, this 1,954-square-foot commercial office suite offers a functional, move-in ready workspace across 8 well-defined rooms. The single-story layout features a practical mix of private offices, open work areas, a central corridor, and a dedicated kitchenette area suited for a variety of professional uses.

Interior finishes include durable multi-toned commercial carpeting, drop-panel acoustic ceilings, recessed fluorescent lighting, and solid wood interior doors that add warmth throughout the suite. Several perimeter offices feature exterior-facing windows with vertical blinds, providing abundant natural light and views of surrounding greenery.

A built-in kitchenette with wood cabinetry, upper and lower storage, and a sink enhances everyday convenience for staff. This adaptable office suite provides a professional setting in Northwest San Antonio.

SPACE HIGHLIGHTS

- 1,954 SF Office Suite
- 8 Private Office Rooms
- Built-In Kitchenette
- Move-In Ready Space
- Windowed Private Offices
- Flexible Office Layout



SUITE 292 – W | 1,954 SF

