

MESA LINDA LOGISTICS CENTER

9260 MESA LINDA STREET, HESPERIA, CA

AVAILABLE

For Sale \$77,680,000

For Lease \$0.95G Per Month

SCAQMD COST SAVINGS

±\$700,000 Per Year

ROBUST LABOR POOL

±80,000 residents commuting outside the Inland Empire North



**SCAN TO
VISIT OUR WEBSITE**

Licensed as Real Estate Salespersons by the DRE. This information contained herein has been obtained from sources we deem reliable. While we have no reason to doubt its accuracy, we do not guarantee it. ©2026 Voit Real Estate Services, Inc. All Rights Reserved. License #01991785.

Voit

REAL ESTATE SERVICES

3280 E. Guasti Road, Suite 100, Ontario, CA 91761 | www.voitco.com

RYAN LAL, SIOR

Senior Vice President, Partner

909.545.8020

RLal@Voitco.com

License #01854104

DANTE BORRUSO

Vice President, Partner

909.775.4475

DBorruso@Voitco.com

License #02086368

Newcastle | PARTNERS

MESA LINDA LOGISTICS CENTER

9260 MESA LINDA STREET, HESPERIA, CA 92570

±406,138 SF

PROPERTY FEATURES



36' Minimum Clear Height at First Bay



±5,241 SF First Floor Office



±4,504 SF Mezzanine



±17.54 Acres



50' X 56' Typical Bay Spacing



54 Dock High Positions
9' x 10' - All Equiped w/ Mechanical Dock Levelers, 35,000 lbs



2 Ground Level Doors 12' x 14'



219 Auto Parking Stalls
8 EV Charging Stations



57 Trailer Parking Stalls (Off Dock)



8" Thick Floor Slab, 4,000 psi



185' All Concrete Secured Truck Courts



2.5% Skylights



4,000 Amp Underground Pull Section , w/ 4,000 Amp Service Panel Installed (verify)



LED Lighting System w/ Motion Sensors at an Average of 20 fc aff



ESFR, K25.2, 50 psi

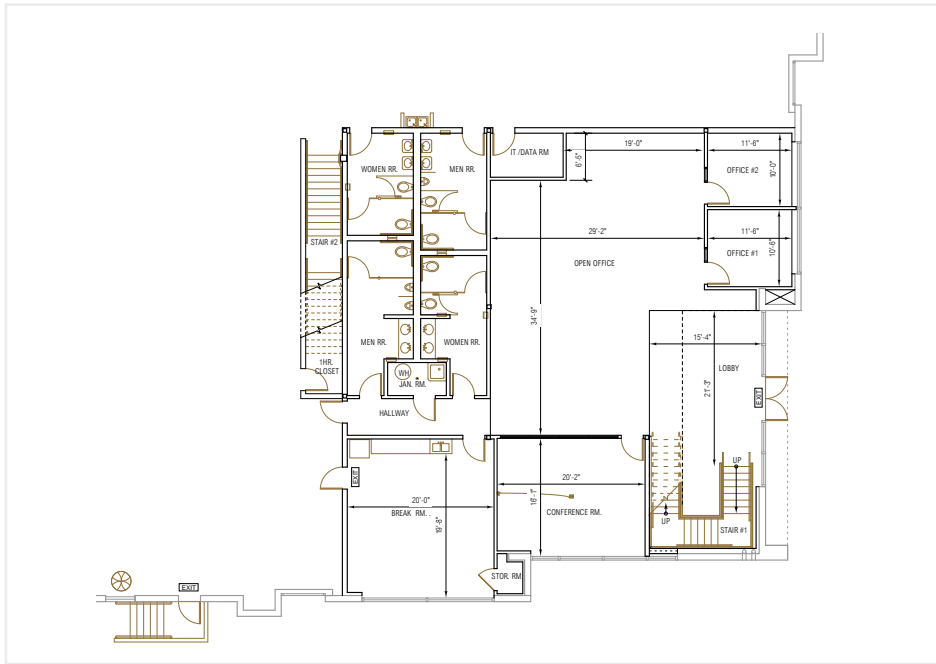
For qualified uses, take advantage of 100% building depreciation in year 1 of ownership, or benefit from other accelerated depreciation methods identified in current tax law. Please consult with a tax professional to see how this would benefit your tax situation.

MESA LINDA LOGISTICS CENTER

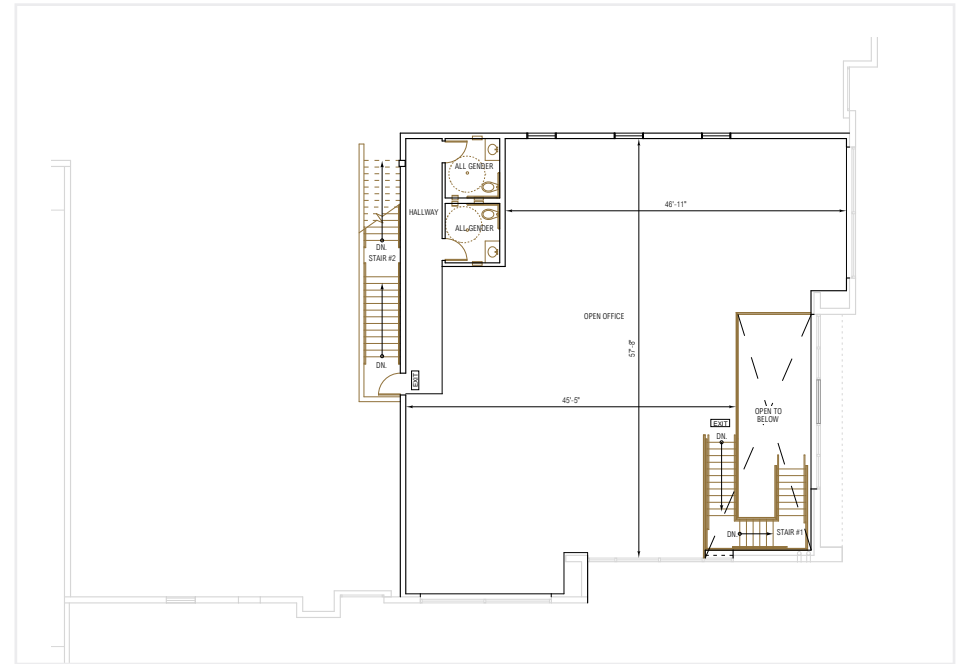
9260 MESA LINDA STREET, HESPERIA, CA 92570

±406,138 SF

OFFICE PLANS



**GROUND FLOOR
OFFICE PLAN ±3,567 SF**



**MEZZANINE
OFFICE PLAN ±3,141 SF**

MESA LINDA LOGISTICS CENTER

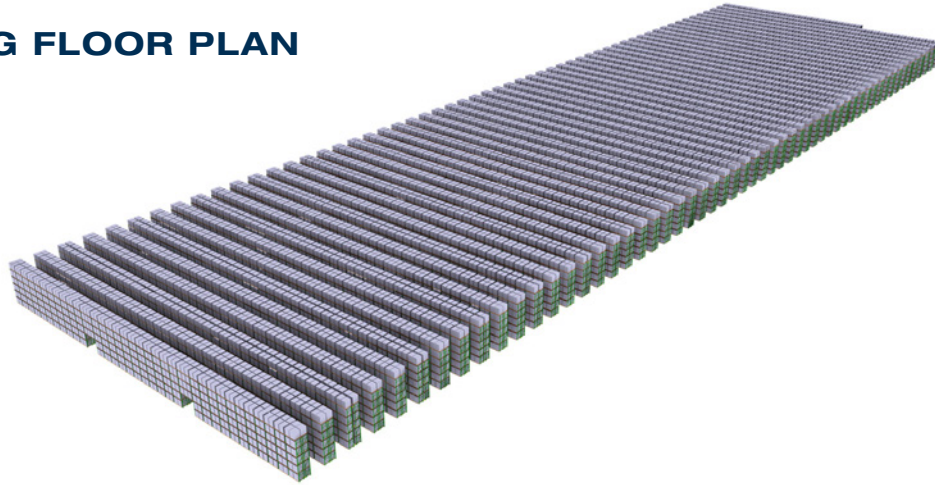
9260 MESA LINDA STREET, HESPERIA, CA 92570

±406,138 SF

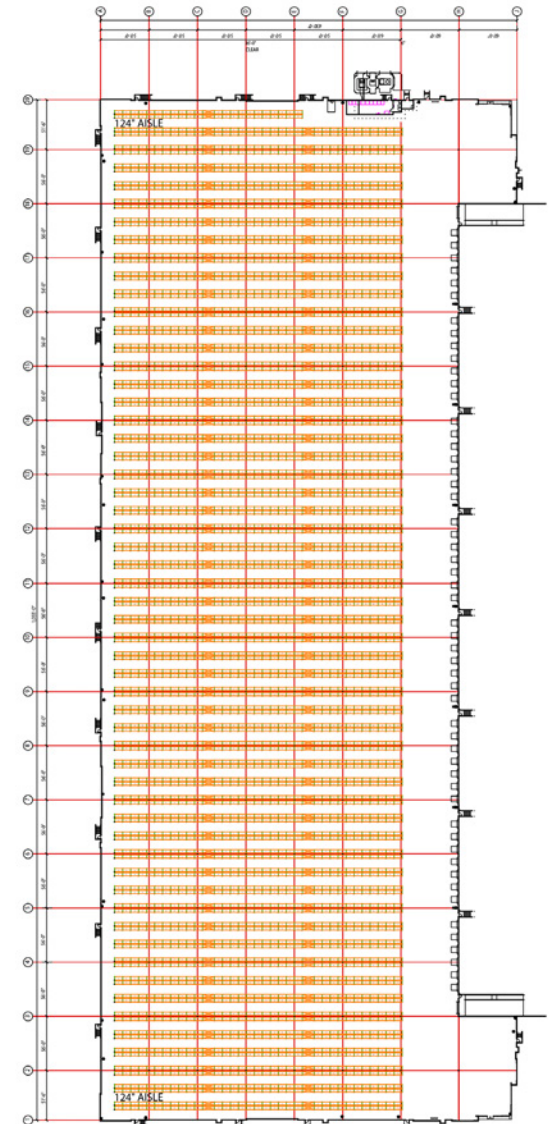
RAYMOND WEST
INTRALOGISTICS SOLUTIONS

CONTACT: Greg Hanoian | 562.447.5891 | greg.hanoian@raymondwest.com

CONCEPTUAL RACKING FLOOR PLAN

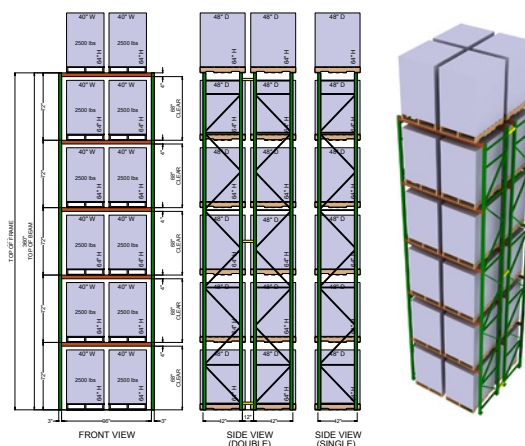
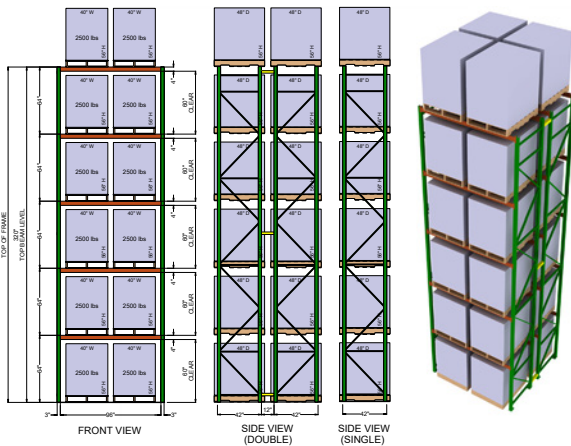


RACKING PLAN



TOTAL 56" PALLET POSITIONS

TOTAL 64" PALLET POSITIONS

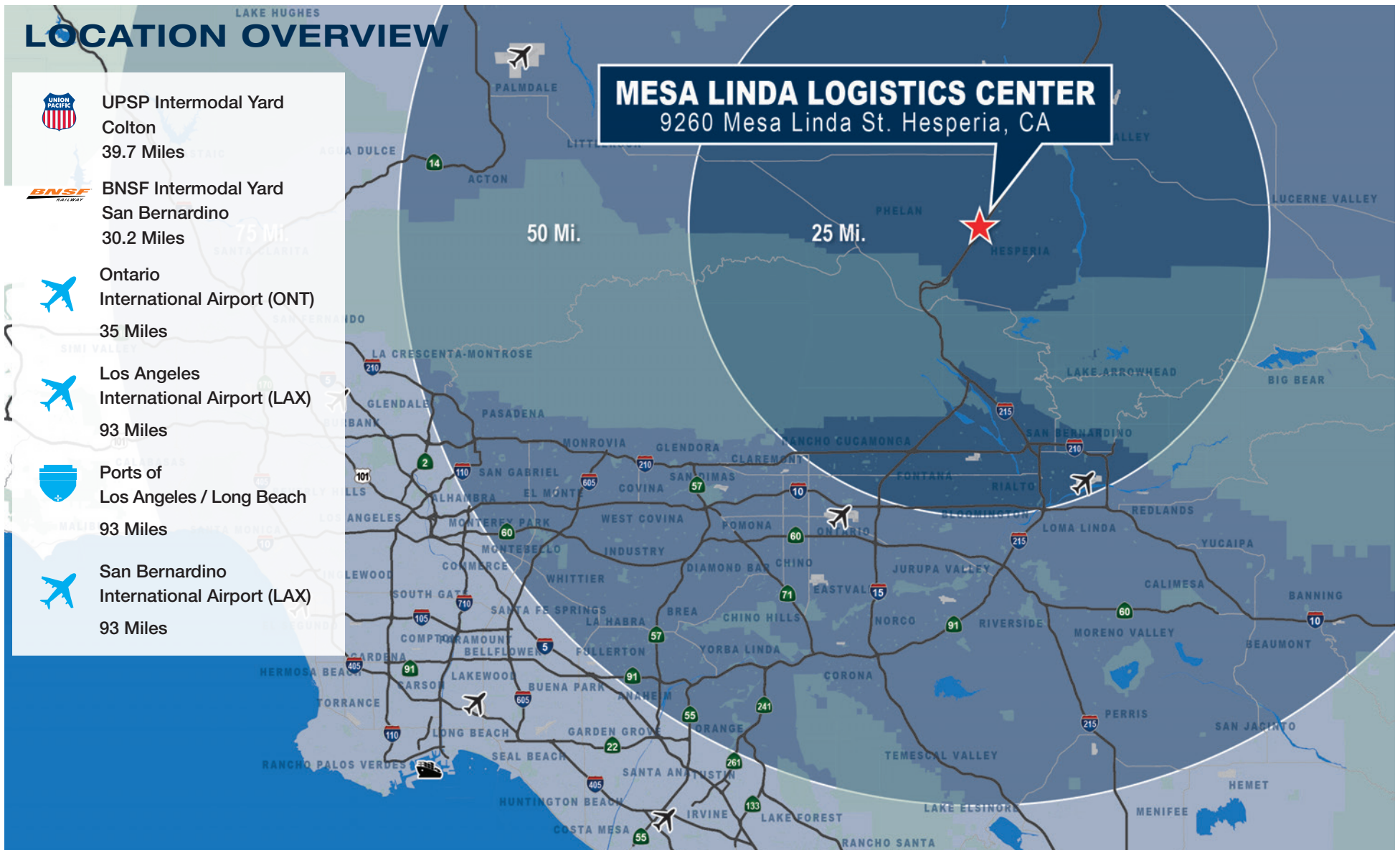


No warranty or representation is made to the accuracy of the conceptual racking plan or rendering racking plan.
No liability of any kind is to be imposed on the broker or owner herein and shall not be held responsible for any decisions made based on such information.

MESA LINDA LOGISTICS CENTER

9260 MESA LINDA STREET, HESPERIA, CA 92570

±406,138 SF



MESA LINDA LOGISTICS CENTER

9260 MESA LINDA STREET, HESPERIA, CA 92570

±406,138 SF

PREMIER DISTRIBUTION LOCATION

**DOWNTOWN
LOS ANGELES** 78.8 MILES

LAS VEGAS 196 MILES

PHOENIX 354 MILES

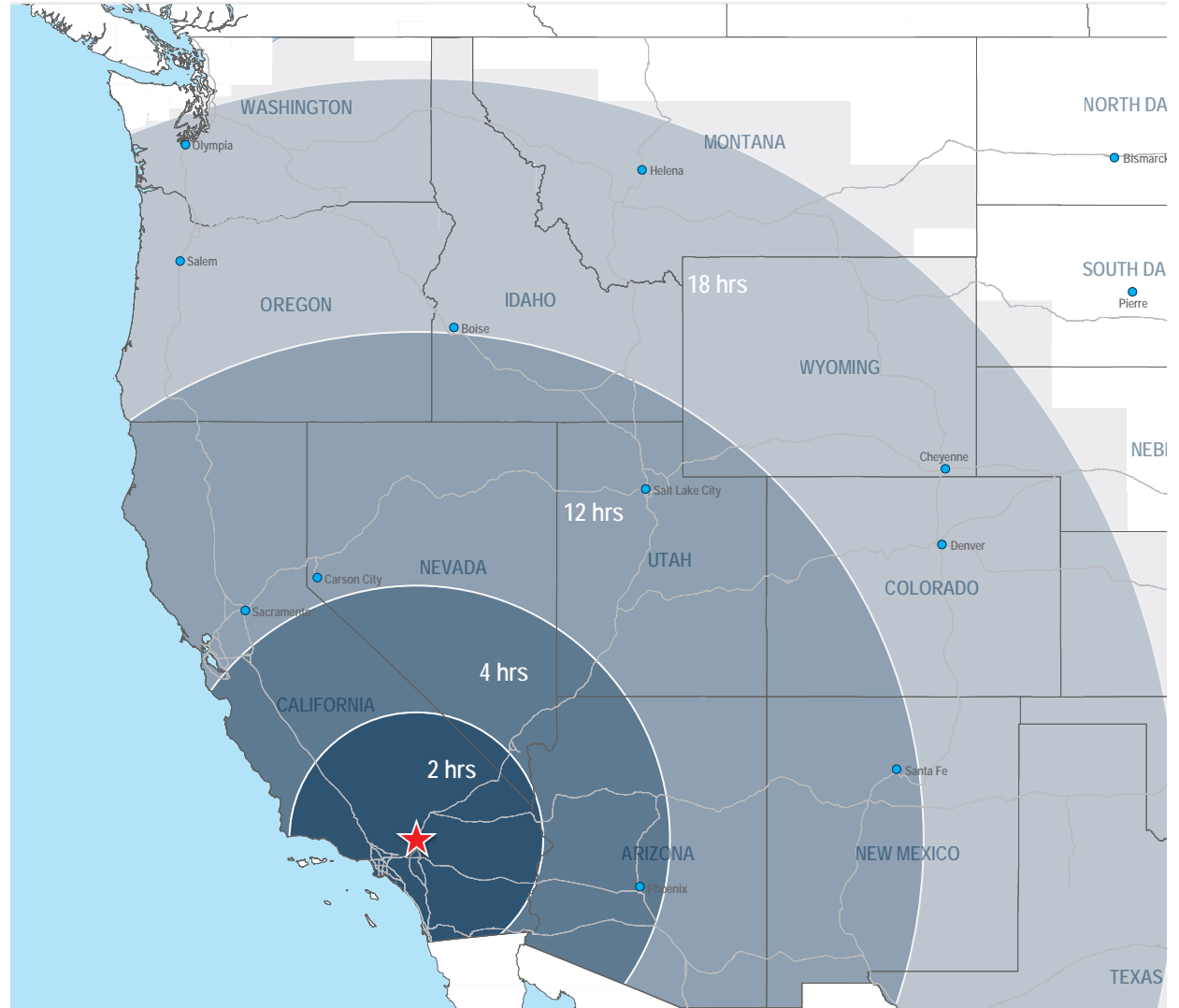
**SAN
FRANCISCO** 426 MILES

**SALT
LAKE CITY** 615 MILES

DENVER 943 MILES

PORTLAND 1,004 MILES

SEATTLE 1,177 MILES



MESA LINDA LOGISTICS CENTER

9260 MESA LINDA STREET, HESPERIA, CA 92570

±406,138 SF



Voit

REAL ESTATE SERVICES

RYAN LAL, SIOR

Senior Vice President, Partner

909.545.8020

RLal@Voitco.com

License #01854104

DANTE BORRUSO

Vice President, Partner

909.775.4475

DBorruso@Voitco.com

License #02086368

Newcastle | PARTNERS