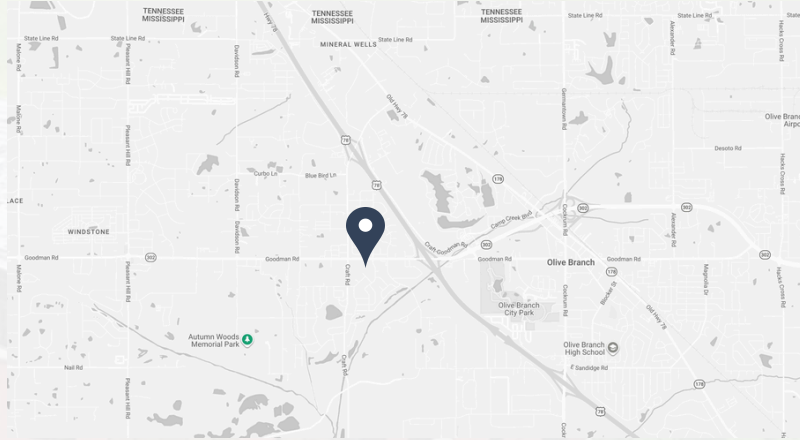


**FOR SALE**

**6920 OAK FOREST DRIVE**

**OLIVE BRANCH, MS 38654**

**6920 OAK FOREST DR**  
**OLIVE BRANCH, MS 38654**



**PROPERTY DESCRIPTION**

6920 Oak Forest Drive offers a rare opportunity to acquire a well-maintained, two-story office building in the heart of Olive Branch, MS. The property features a striking two-story entrance, a functional layout with reception, private offices, flexible workspace, and executive offices, along with abundant natural light, multiple restrooms, and break areas. Located just off the highly trafficked Goodman Road/Craft Road corridor, it provides convenient access to retail, dining, and major transportation routes.



**PROPERTY HIGHLIGHTS**

- 5,800 SF Two-Story Office Building (3,460 SF ground floor | 2,340 SF second floor)
- Ideal for Owner-User or Investor
- Efficient Layout with a mix of private offices and collaborative workspace
- Strong Access & Visibility just off Goodman Rd and Craft Rd
- Traffic Counts: Goodman Rd (34,000 AADT) and Craft Rd (23,000 AADT)

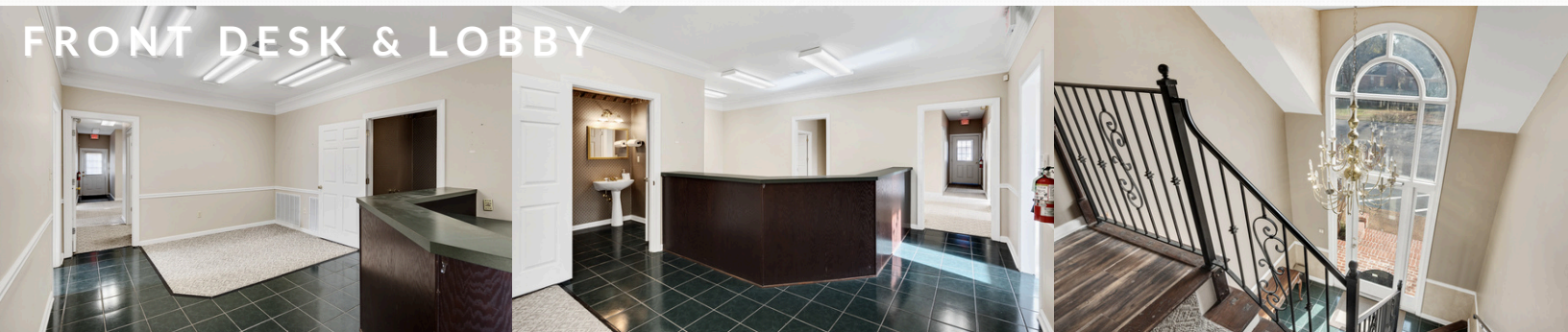


**JOSHUA FISHER**      **WRILEY GILLEN**  
 901.467.1310      901.545.5607  
 jfisher@jonesaur.com      wgillen@jonesaur.com





# PROPERTY INTERIOR



## FRONT DESK & LOBBY

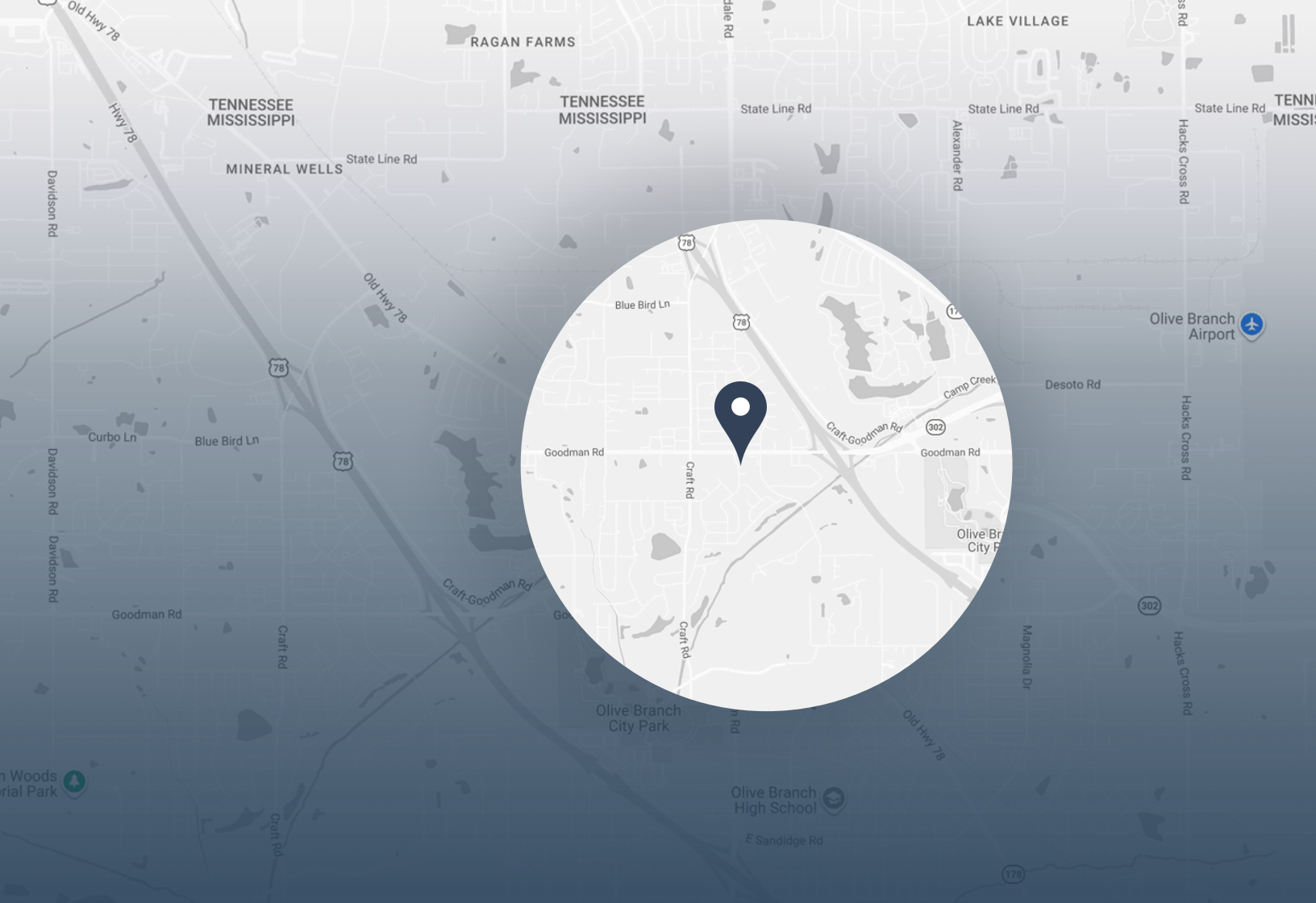


## DEDICATED OFFICES



## BREAKROOMS

**JOSHUA FISHER**      **WRILEY GILLEN**  
 901.467.1310              901.545.5607  
 jfisher@jonesaur.com      wgillen@jonesaur.com



# 6920 OAK FOREST DR | OLIVE BRANCH, MS 38654

## LOCATION DESCRIPTION

6920 Oak Forest Drive offers a compelling office opportunity within Olive Branch's established and rapidly growing business community. Positioned just off Goodman Road with convenient access to Craft Road, Highway 78, and Memphis, the property provides a highly accessible location for a variety of users. Surrounded by a strong mix of office, medical, and retail activity, the area continues to benefit from Desoto County's expanding population and business-friendly environment. With close proximity to dining, retail, and service amenities, this location delivers both convenience and credibility for businesses or investors seeking a presence in the greater Memphis metro.

**JOSHUA FISHER**

901.467.1310  
jfisher@jonesaur.com

**WRILEY GILLEN**

901.467.1310  
jfisher@jonesaur.com