



Lease rate
\$18.00
psf + janitorial

2189 Silas Deane Highway Rocky Hill, CT 06067

Second floor space available in high demand office area for lease

2189 Silas Deane Highway is a $\pm 20,000$ sf office building on 2.4 acres in Rocky Hill, CT. There is $\pm 3,220$ rsf available for lease on the second floor in this high-demand office area. The building has a marble lobby, high-quality finishes, excess parking available during business hours and an immediate access to I-91.

Features

- $\pm 3,220$ rsf for lease on 2nd floor; Will sub-divide to ± 920 rsf
- Close to shops & restaurants
- Immediate access to I-91
- Available May 1, 2026
- Marble lobby
- High-quality finishes
- Rarely available space in popular building
- Excess parking available during business hours per agreement with neighboring property

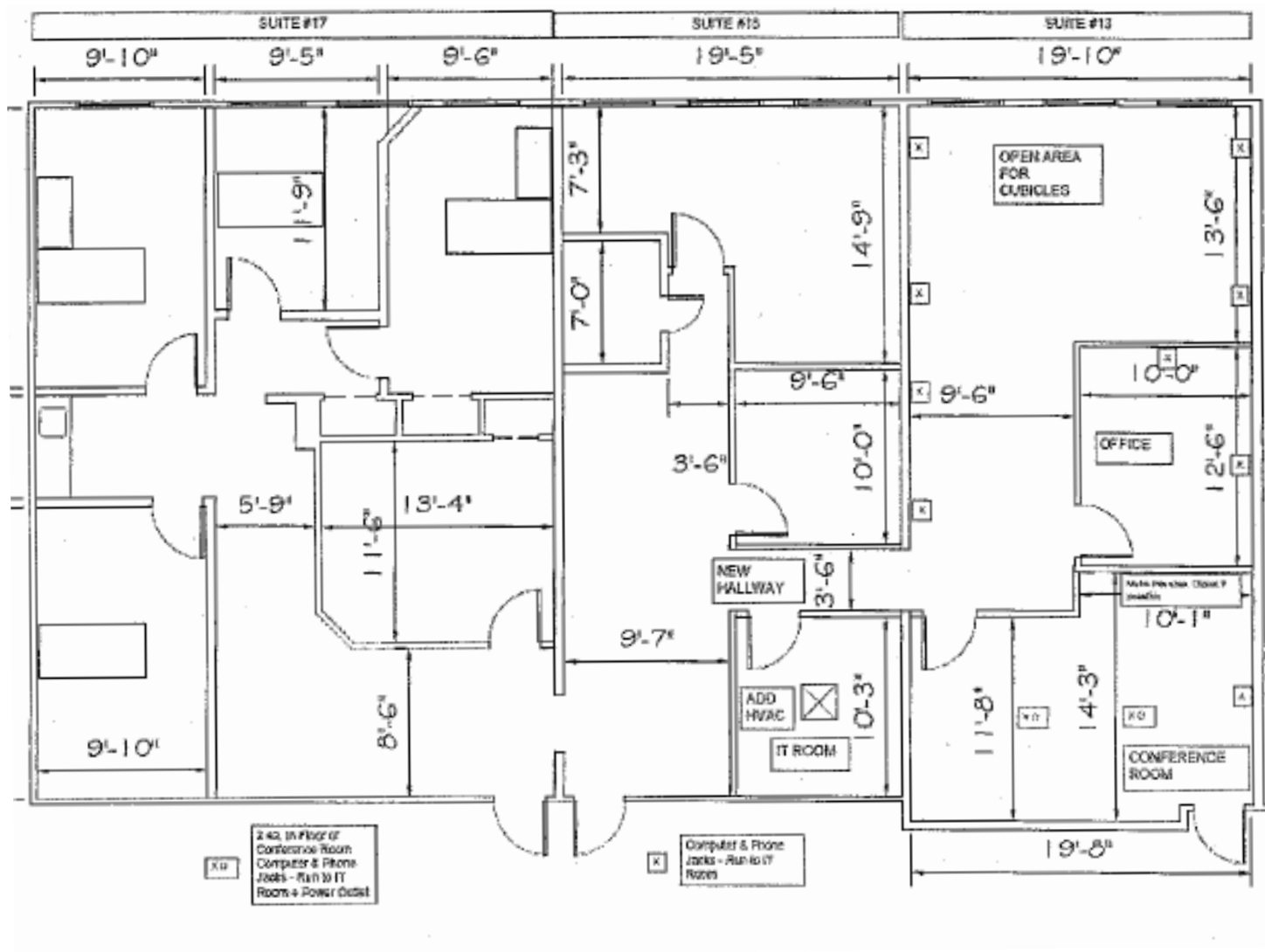
Jay Wamester, SIOR
860 616 4031
jay.wamester@ct.colliers.com

864 Wethersfield Avenue
Hartford, CT 06114
860 249 6521 Main

colliers.com/hartford

2189 Silas Deane Highway
Rocky Hill, CT 06067

Floor Plan



Contact

Jay Wamester, SIOR
860 616 4031
jay.wamester@ct.colliers.com

864 Wethersfield Avenue
Hartford, CT 06114
860 249 6521 Main

colliers.com/hartford



Contact

Jay Wamester, SIOR
860 616 4031
jay.wamester@ct.colliers.com

864 Wethersfield Avenue
Hartford, CT 06114
860 249 6521 Main

colliers.com/hartford