

For Lease

±35,616 SF | ±2,065 SF Office Available

826 Professor Lane, Suite 100, Sacramento, CA



Matt Lofrano
Executive Vice President
+1 916 563 3056
matt.lofrano@colliers.com
CA Lic. 01251712

Hannah Crandall
Transaction Manager
+1 916 563 3093
hannah.crandall@colliers.com
CA Lic. 02043170



LINK



Accelerating success.



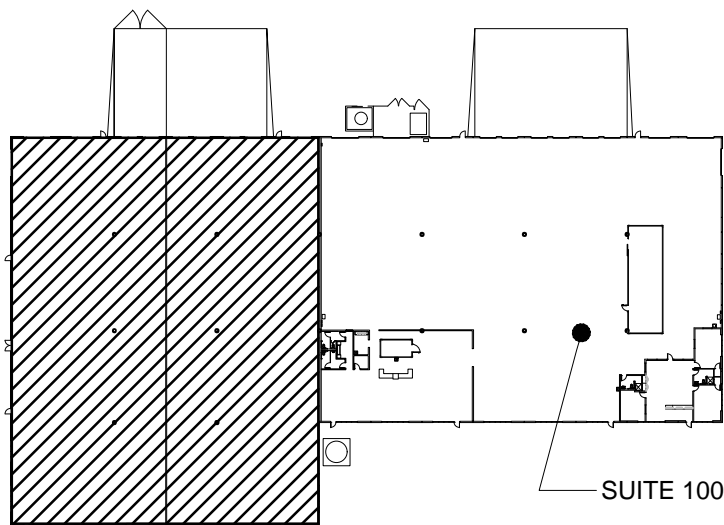
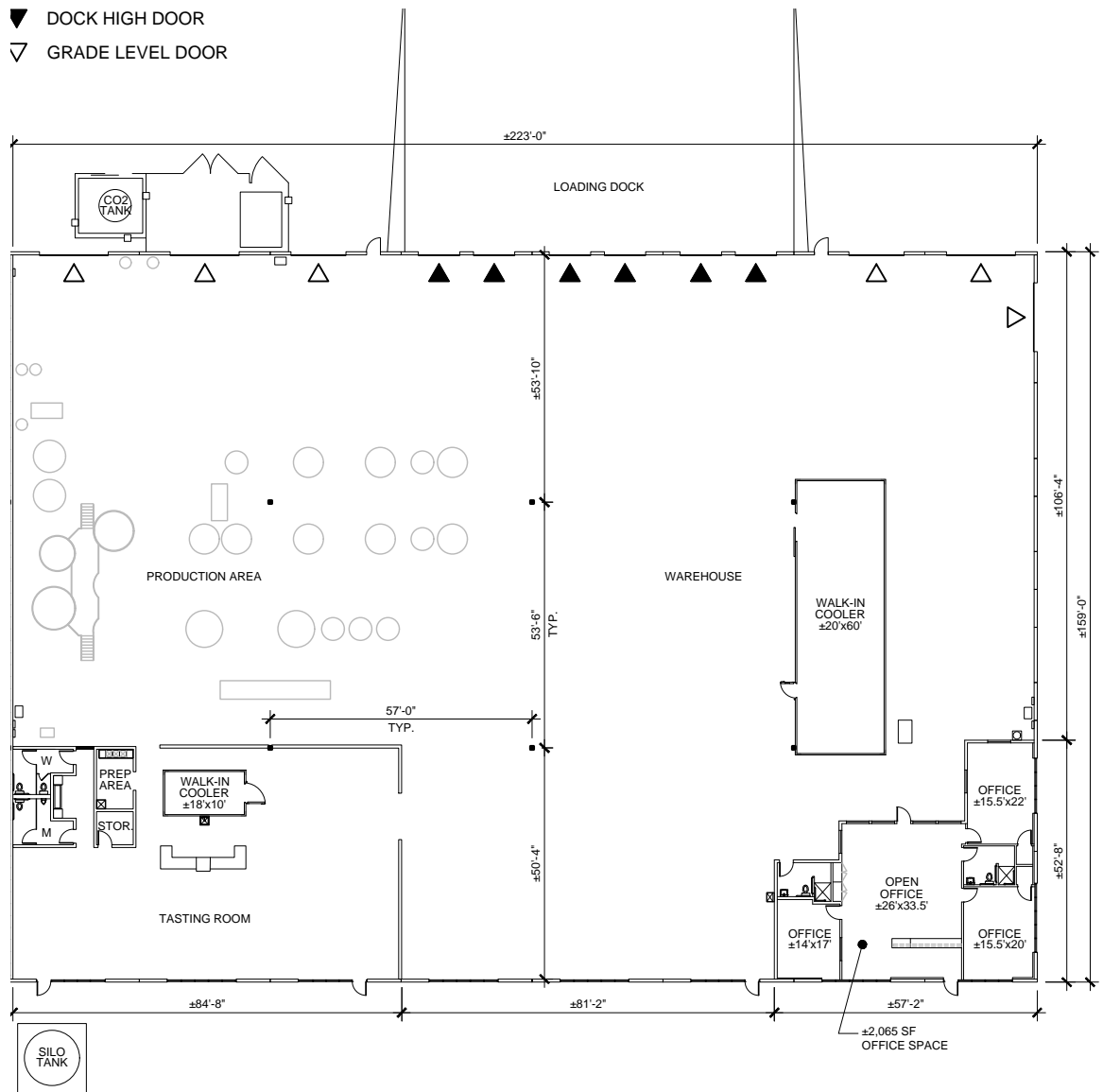
Property Features

- ±37,681 SF
- ±2,065 SF Office
- ±35,616 SF Warehouse
- Concrete tilt-up construction
- 57'x57' column spacing
- 277/480 V3 phase power
- 24'-28' Clear Height
- Pit levelers on all doors
- Skylights
- Extensive glass-line
- Easy access to interstates 5 & 80
- 6 dock high doors
- 5 grade level doors
- Existing equipment available
(See list on page 4)



Site Plan

- Suite 100 - ±35,616 SF
- Office - ±2,065 SF



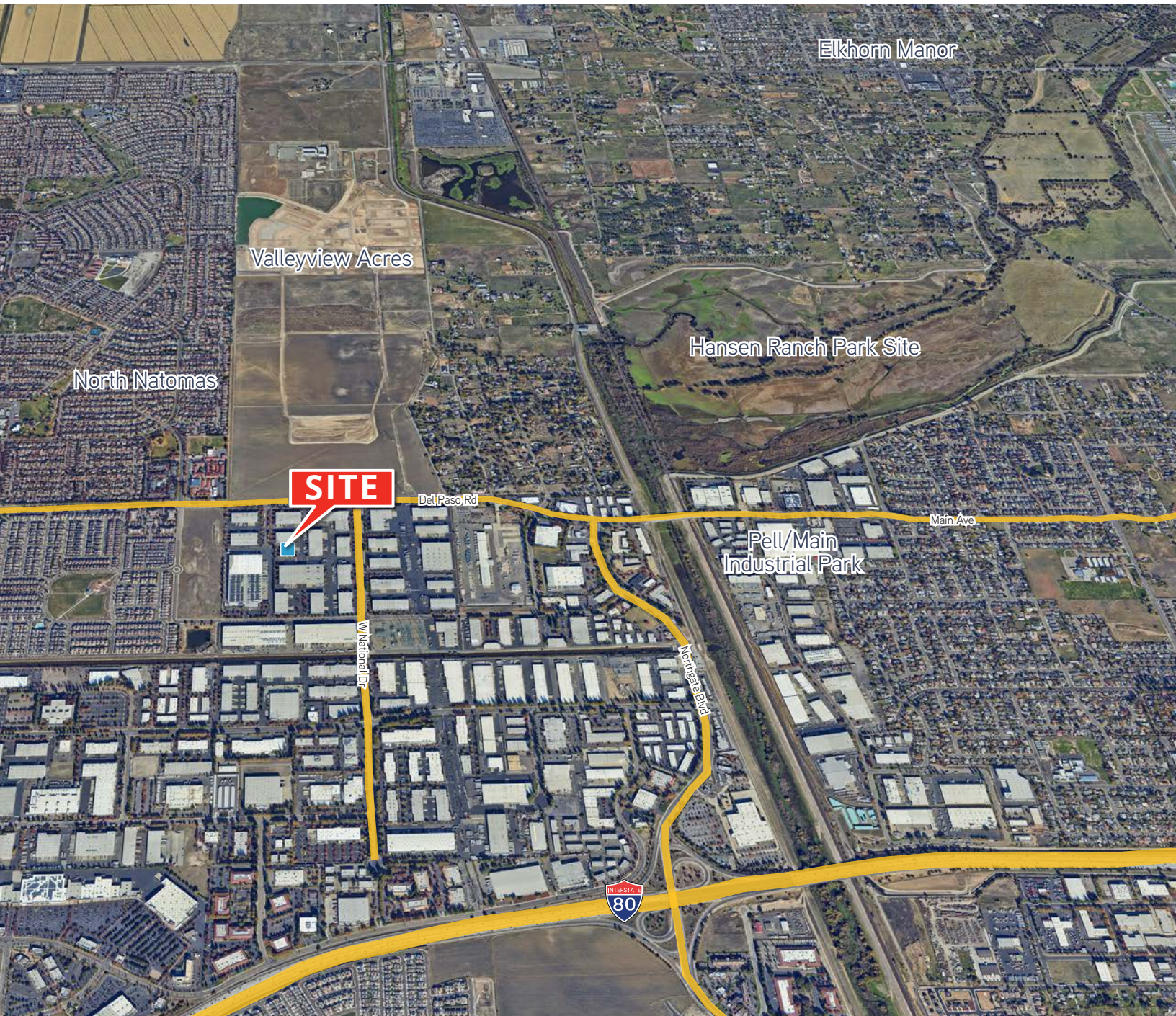


Available Equipment

QTY

- 1 Bulk CO2 Tank (exterior)
- 1 Mill Auger
- 12 Fermenters (various sizes, confirm qty)
- 1 Grain Auger
- 1 Mash/Lauter Mixer
- 2 Kettle
- 1 Whirlpool
- 1 Hot Liquid Pump
- 1 Cold Liquid Pump
- 1 Steam Boiler
- 1 Tank
- 4 CO2 Tanks (interior)
- 2 Air Compressor
- 2 Air Compressor Dryer
- 2 Glycol Unit
- 1 Centrifuge
- 1 Exhaust Fans
- 1 Steam Boiler
- 1 O2 Tank
- 1 Exhaust Fans
- 1 Intake Louvers
- 1 Infrared heaters
- 1 Packaging Line
- 1 Heat Exchanger
- 1 2,336 Cu Ft Exterior Grain Silo
- 1 Walk in Cooler
- 1 Large refrigeration unit
- *To be verified by Tenant

Location Overview



Matt Lofrano
Executive Vice President
+1 916 563 3056
matt.lofrano@colliers.com
CA Lic. 01251712

Hannah Crandall
Transaction Manager
+1 916 563 3093
hannah.crandall@colliers.com
CA Lic. 02043170



LINK

