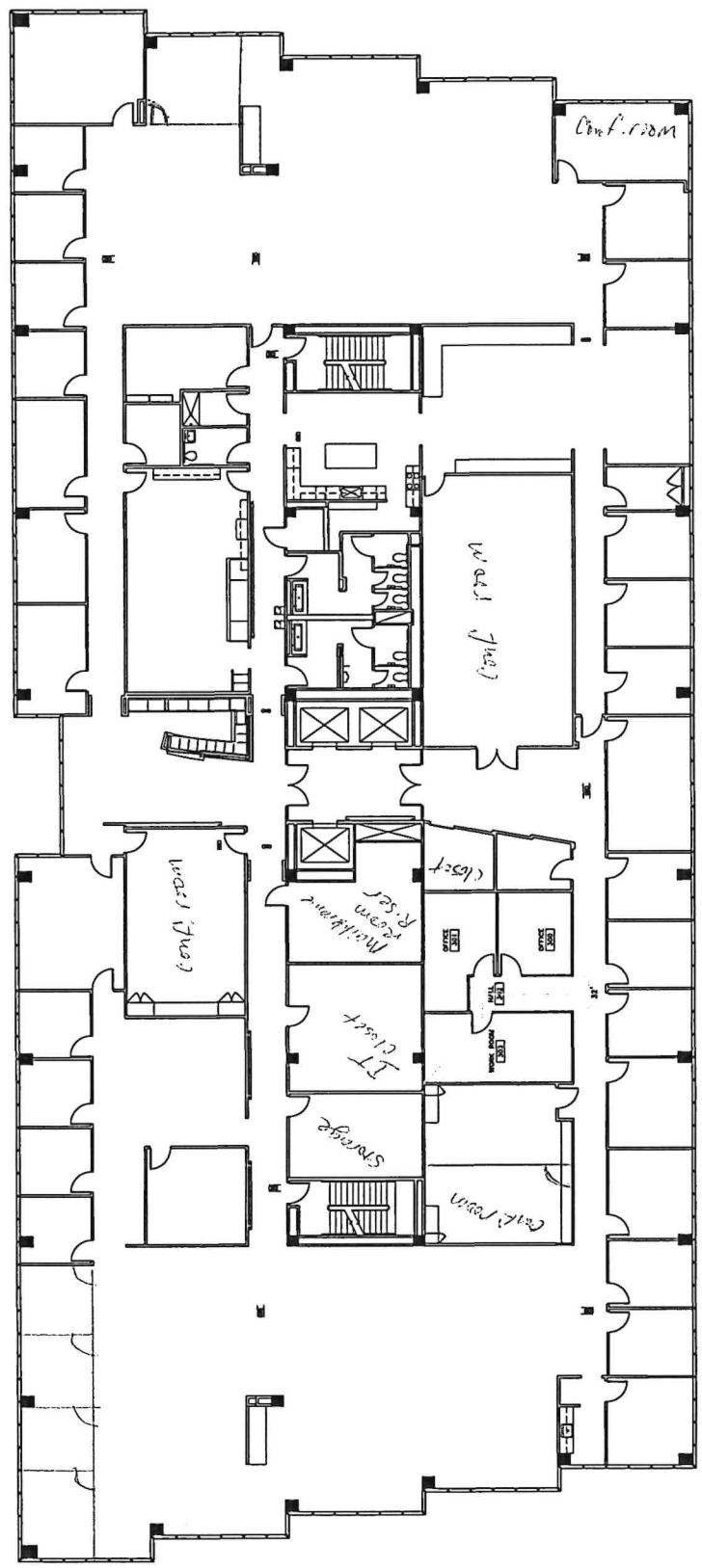


**LEGEND**

- EXIT SIGN
- SMOKE INDICATOR
- SMOKE DETECTOR
- SMOKE EXHAUST
- SMOKE EXHAUST
- SMOKE EXHAUST

**NOTE:**  
 THE BUILDING IS FULLY PROTECTED BY AUTOMATIC  
 FIRE SUPPRESSION SYSTEMS  
 BY COMPANY  
 EXIT ACCESS MAINTAINED - 100' MAX.  
 COMMON PATH OF TRAVEL - 100' MAX.

- APPLICABLE CODES: 2018 INTERNATIONAL BUILDING CODE
- 2018 INTERNATIONAL MECHANICAL AND ELECTRICAL CODE
- 2018 INTERNATIONAL PLUMBING CODE
- 2018 INTERNATIONAL FIRE CODE
- 2018 INTERNATIONAL ENERGY CODE
- 2018 INTERNATIONAL ELECTRICAL CODE
- 2018 TEXAS ACCESSIBILITY STANDARDS



LIFE SAFETY PLAN 1/8" = 1'-0" 01

RESOURCE ENVIRONMENTAL SOLUTIONS  
 (REMODEL)  
 LIFE SAFETY PLAN  
 A.0.0  
 TWSB Inc. Project No:07115-577

6575 WEST LOOP SOUTH  
 SUITE 300  
 BELLAIRE, TEXAS 77401

The Wingfield/Sears Group, Inc.  
 Architects  
 Interior Designers  
 3815 Montrose Blvd., Suite 200  
 Houston, Texas 77006  
 713.827.4600  
 www.Wingfield-Sears.com

| ISSUE NO. | DATE | DESCRIPTION |
|-----------|------|-------------|
|           |      |             |
|           |      |             |
|           |      |             |
|           |      |             |
|           |      |             |