

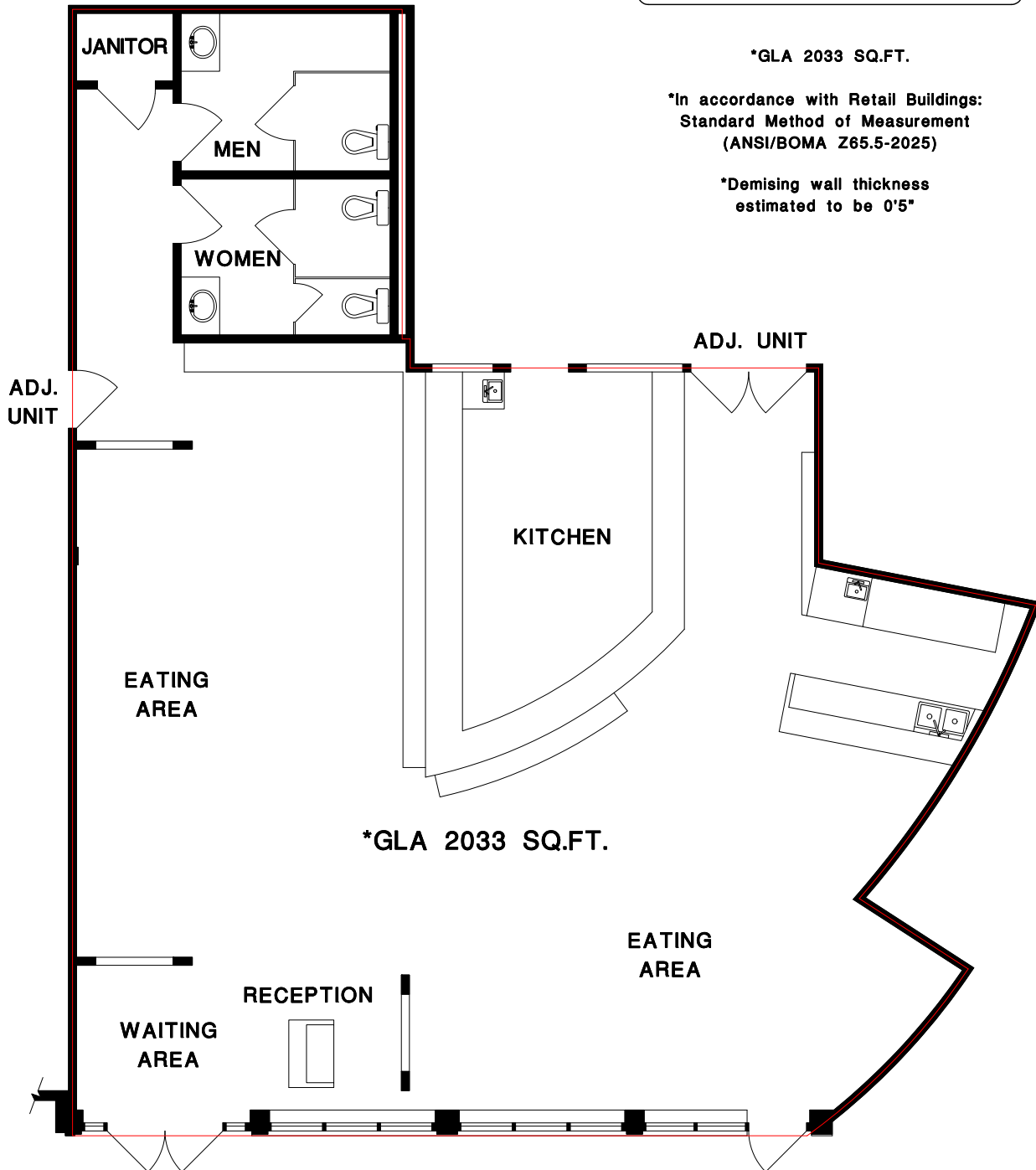
EXISTING PROPERTY AT:

**350 GIFFORD STREET
NEW WESTMINSTER, B.C.**

*GLA 2033 SQ.FT.

*In accordance with Retail Buildings:
Standard Method of Measurement
(ANSI/BOMA Z65.5-2025)

*Demising wall thickness
estimated to be 0'5"



*GLA 2033 SQ.FT.



1' 6'
SCALE



All measurements must be verified prior to construction or renovations.