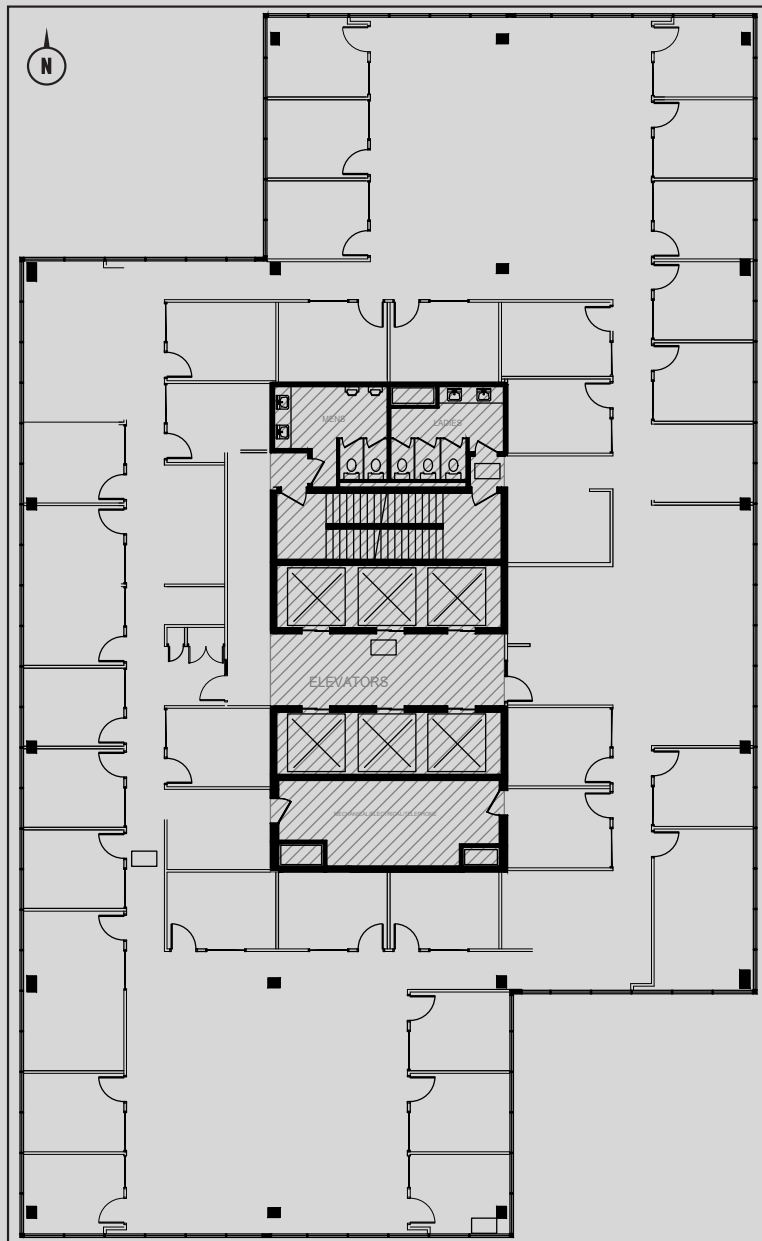


TYPICAL FLOORPLAN - 11,029 SQ.FT.



CAMERON MARTIN

587-635-5335

cmartin@epicinvestmentservices.com

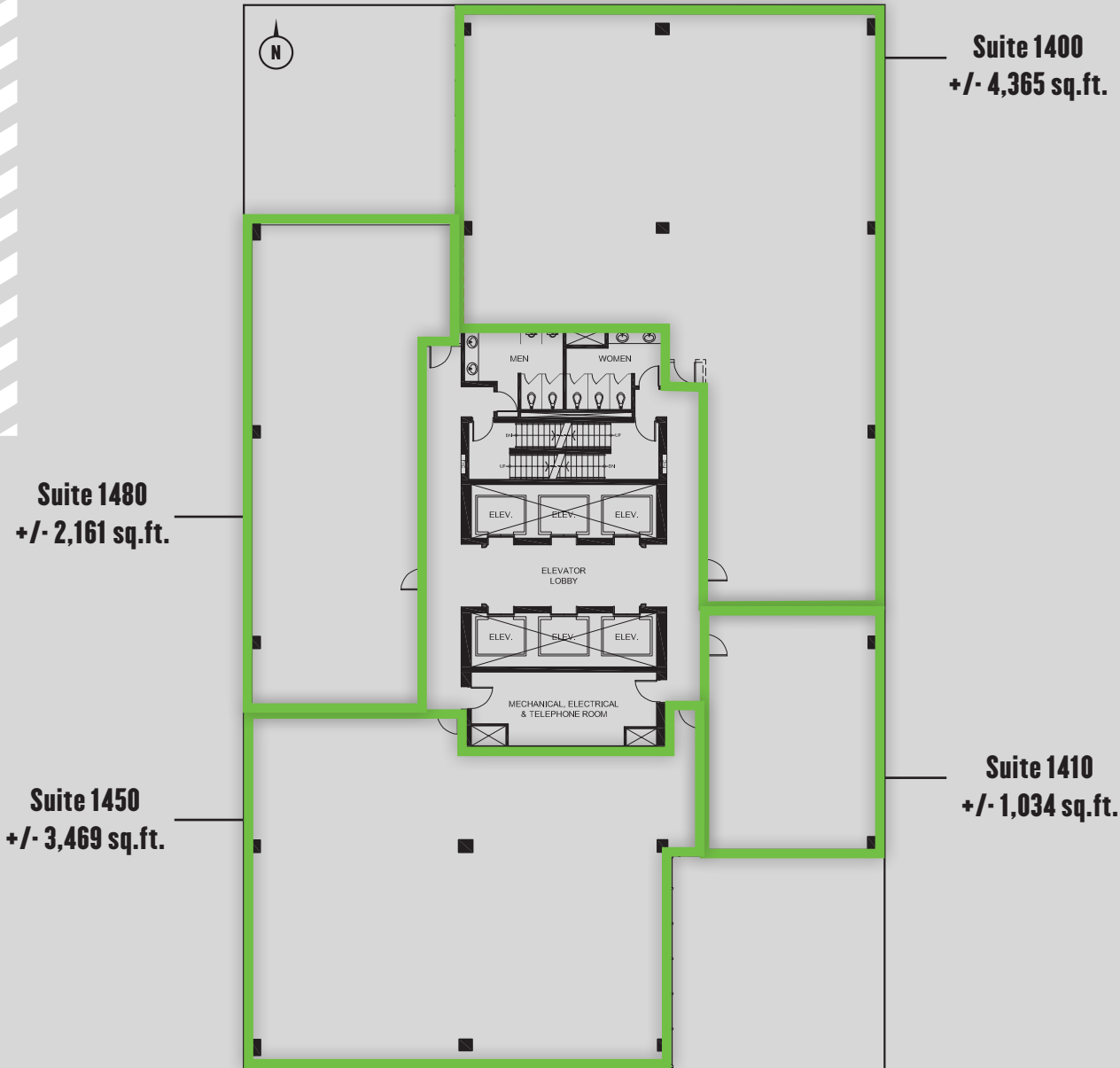
10130 103 Street NW
Edmonton, Alberta T5J 3N9

103DOWNTOWN.COM

Epic

EPIC Investment Services
10130 – 103 Street NW, Suite 1300
Edmonton, Alberta T5J 3N9
epicinvestmentservices.com

MULTI-TENANT FLOORPLAN



CAMERON MARTIN

587-635-5335

cmartin@epicinvestmentservices.com

10130 103 Street NW
Edmonton, Alberta T5J 3N9