

7 Glenthorne Mews, Unit 7, Glenthorne Mews, Hammersmith, W6 0LJ

**The self-contained ground floor in a stunning mews building is available for lease. Situated in a private gated courtyard in Hammersmith.**



- Self-Contained
- Mews Property
- Gas fired central heating
- Alarm
- Perimeter trunking - CAT 5 cabling
- Gated Courtyard

Office

**TO LET**

**1,390 sq ft**

(129.14 sq m)

# 7 Glenthorne Mews, Unit 7, Glenthorne Mews, Hammersmith, W6 0LJ

## Summary

|                       |                  |
|-----------------------|------------------|
| <b>Available Size</b> | 1,390 sq ft      |
| <b>Rent</b>           | £35 per sq ft    |
| <b>Rates Payable</b>  | £11.25 per sq ft |
| <b>Service Charge</b> | £1.76 per sq ft  |
| <b>EPC Rating</b>     | Upon enquiry     |

## Description

The two-floor former Victorian bakery has been converted into a terrace of brick clad self-contained mews office buildings with full height glazed frontages. The ground floor of this self-contained mews building is available within this attractive gated courtyard. These offices provide an opportunity to find an office to rent in Hammersmith W6.

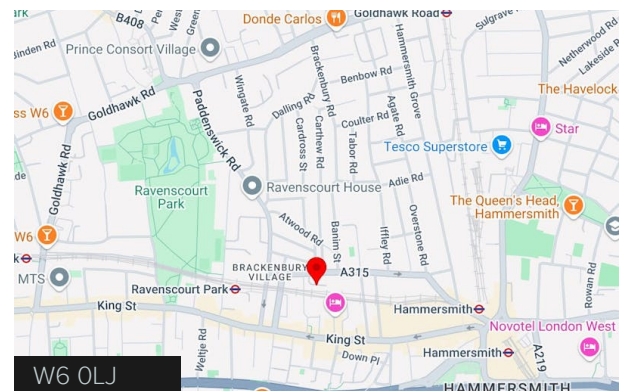
## Location

A mews of converted studio offices to the south of Glenthorne Road, close to the junction with Galena Road in Ravenscourt Park, Hammersmith. Ravenscourt Park (District Line) Underground station is less than a 4 minute walk away and Hammersmith Broadway is 7 minutes' walk. At Hammersmith Broadway Underground stations there are connections to the Piccadilly, District, Circle and Hammersmith & City Lines. From Hammersmith, the Piccadilly Line provides direct access to Heathrow Airport. Local road connections include the A4/M4 with access to the West End (6 miles) Heathrow Airport and the M25. There are a number of bars and pubs within walking distance, such as the Stonemasons Arms gastro pub together with the many shops, banks and restaurants on King Street.

## Accommodation

The accommodation comprises of the following

| Name                  | sq ft        | sq m          | Tenure | Availability |
|-----------------------|--------------|---------------|--------|--------------|
| Ground - Ground Floor | 1,390        | 129.14        | To Let | Available    |
| <b>Total</b>          | <b>1,390</b> | <b>129.14</b> |        |              |



## Viewing & Further Information

### Giles Harker

02087481200 | 07786 001 534  
gharker@frostmeadowcroft.com

### Shaun Wolfe

020 8748 1200 | 07900 911 135  
swolfe@frostmeadowcroft.com

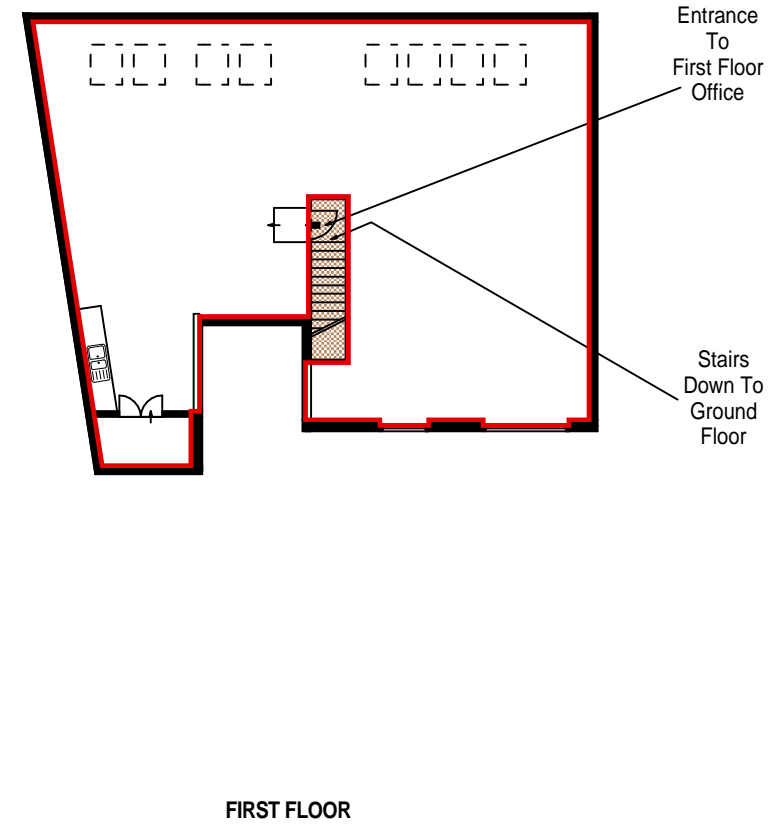
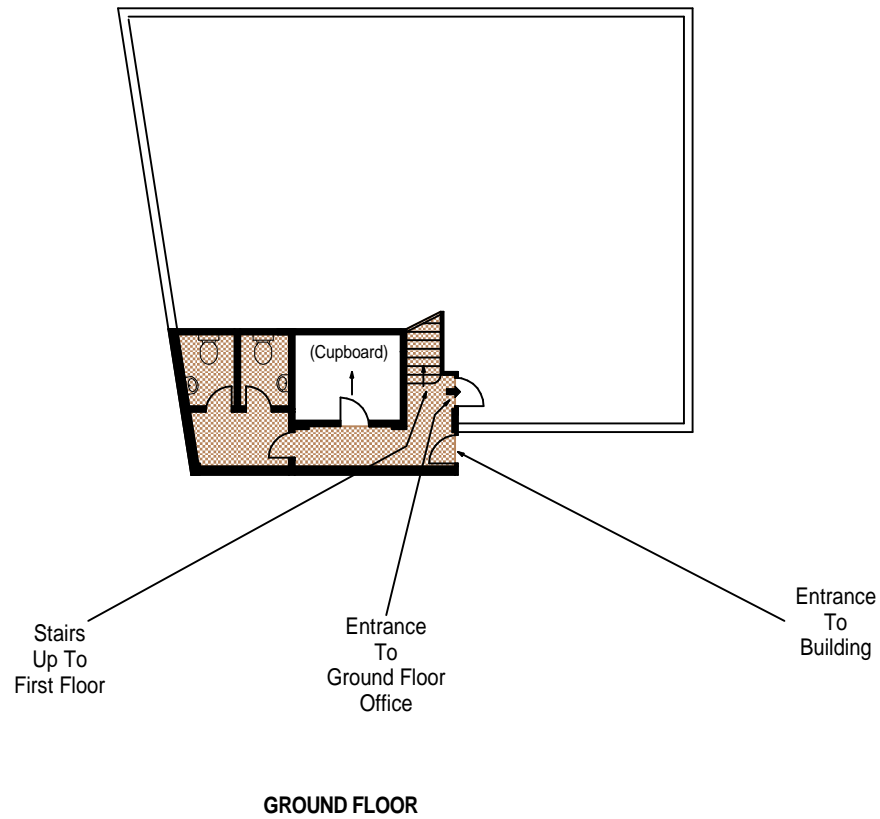




See more at [frostmeadowcroft.com](https://www.frostmeadowcroft.com)

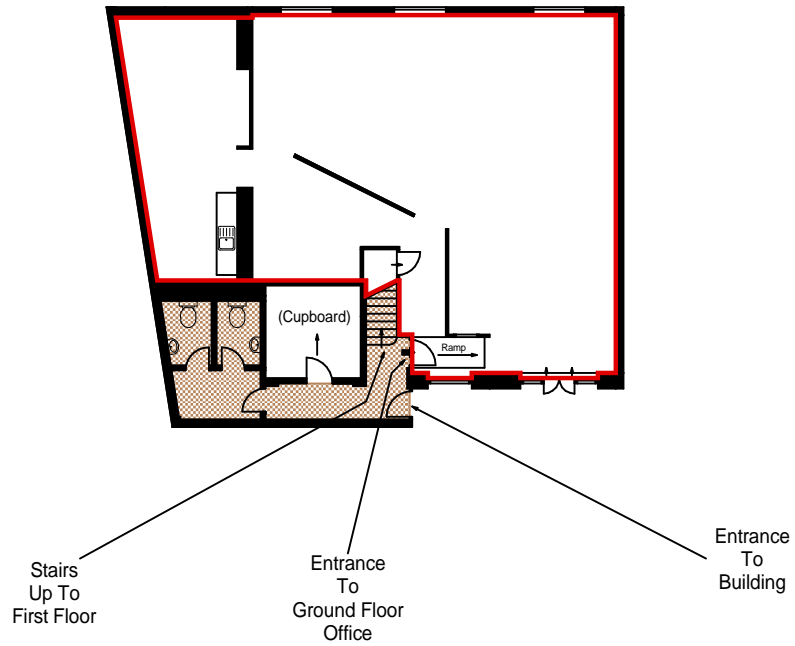
Misrepresentation Act 1967. These particulars are believed to be correct but their accuracy is not guaranteed and they do not form part of any contract. Unless otherwise stated, all prices and rents are quoted exclusive of VAT. Generated on 17/09/2024









|  |   |  |
|--|---|--|
| Property Details:<br><b>FIRST FLOOR OFFICE</b><br><b>UNIT 7</b><br><b>GLENTHORNE MEWS</b><br><b>115A GLENTHORNE ROAD</b><br><b>LONDON W6 0LJ</b> |  | Surveyed and Drawn By:<br><br>Sunnyhill House, 3-7 Sunnyhill Road<br>London, SW16 2UG                 |
| <b>SCALE</b><br><b>1:200 @ A4</b>  |   | Tel: 0845 257 2023<br>Fax: 0845 257 2024<br><a href="mailto:info@bkrfloorplans.co.uk">info@bkrfloorplans.co.uk</a><br><a href="http://www.bkrfloorplans.co.uk">www.bkrfloorplans.co.uk</a> |
| <b>Plans Drawn: 20.03.2013</b>   |   | © BKR 2013   |



**GROUND FLOOR**

|   |   |  |
|---|---|--|
| Property Details:<br><b>GROUND FLOOR OFFICE<br/>         UNIT 7<br/>         GLENTHORNE MEWS<br/>         115A GLENTHORNE ROAD<br/>         LONDON W6 0LJ</b> |  | Surveyed and Drawn By:<br><br>Sunnyhill House, 3-7 Sunnyhill Road<br>London, SW16 2UG                 |
| <b>SCALE</b><br><b>1:200 @ A4</b>   |   | Tel: 0845 257 2023<br>Fax: 0845 257 2024<br><a href="mailto:info@bkrfloorplans.co.uk">info@bkrfloorplans.co.uk</a><br><a href="http://www.bkrfloorplans.co.uk">www.bkrfloorplans.co.uk</a> |
| <b>Plans Drawn: 20.03.2013</b>  |   | © BKR 2013   |