

FOR LEASE

119 STREET CHARACTER OFFICE SPACE

Unit 1, 11302-119 Street NW, Edmonton, AB



HIGHLIGHTS

- 2,320 ft ± fully built out character office unit
- Open high beam ceilings and exposed brick
- Includes executive offices, boardroom, kitchenette and a shared washroom
- Ideal for many professional users including accountants, lawyers, consulting firms, administrative and more
- Fronting 119 Street with excellent access to Kingsway Avenue and minutes to the downtown core

JOEL WOLSKI

Director, Associate

C 780.904.5630

joel@royalparkrealty.com

SCOTT ENDRES

Partner, Broker

C 780.720.6541

scott@royalparkrealty.com



360°

VIRTUAL TOUR



ROYAL PARK
REALTY™

T 780.448.0800 F 780.426.3007
#201, 9083 51 Avenue NW Edmonton, AB T6E 5X4

royalparkrealty.com

For Lease | Unit 1, 11302 109 Street NW, Edmonton, AB



Property Details & Financials

MUNICIPAL ADDRESS	Unit 1, 11302-119 St NW, Edmonton, Alberta
LEGAL DESCRIPTION	Plan: 1743HW; Block: 193; Lot: B
ZONING	IM (Medium Industrial)
TYPE OF SPACE	Office
NEIGHBOURHOOD	Prince Rupert
UNIT 1	2,320 sq ft ±
PARKING	Additional parking available across the street
LEASE RATE	\$11.75/sq ft \$11.00/sq ft
OPERATING COSTS	\$10.50/sq ft (est. includes taxes, building insurance, property management and utilities)
TERM	Five (5) Years
POSSESSION	Immediate

Additional information

- Build out includes reception area, 4 executive offices, large boardroom, open work space, and 2 washrooms
- Move-in ready
- Close proximity to numerous amenities



**ROYAL PARK
REALTY™**

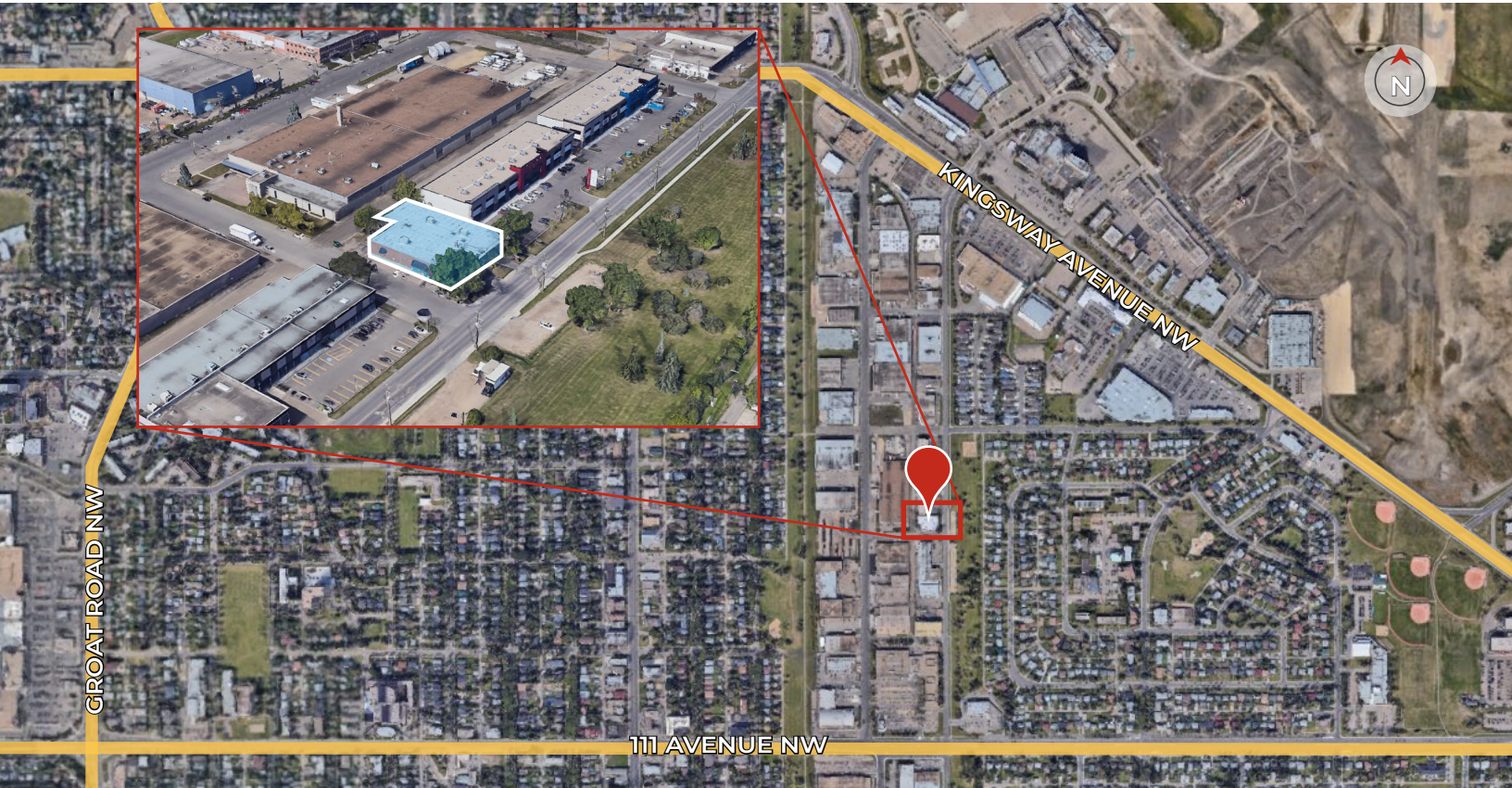
T 780.448.0800 F 780.426.3007
#201, 9083 51 Avenue NW Edmonton, AB T6E 5X4

royalparkrealty.com

Character, Move-in Ready Office Space in Central Edmonton



Property Location



ROYAL PARK
REALTY™

T 780.448.0800 F 780.426.3007
#201, 9083 51 Avenue NW Edmonton, AB T6E 5X4

royalparkrealty.com



Contact Us For More Information



JOEL WOLSKI
Director, Associate
C 780.904.5630
joel@royalparkrealty.com



SCOTT ENDRES
Partner, Broker
C 780.720.6541
scott@royalparkrealty.com



**ROYAL PARK
REALTY™**

T 780.448.0800 F 780.426.3007
#201, 9083 51 Avenue NW Edmonton, AB T6E 5X4

royalparkrealty.com