

CAMSS Building

FOR LEASE

630 6th St S, Kirkland, WA



830

630
SOUTH

CAMSS

Trophy-Class Finishes

Standalone Building Opportunity

New Construction

**Leibsohn
& Company** 



DAN KREKEL CCIM
Senior Vice President
+1 425 586 4655
dkrekel@leibsohn.com




MAXTON MACLACHLAN
Associate Vice President
+1 425 586 4659
mmaclachlan@leibsohn.com

CAMSS Building

630 6th St S, Kirkland, WA

Property Features



- » Trophy-Class Finishes Throughout
- » Standalone, Newly Constructed Building
- » Prominent Building Signage Available
- » Covered Parking for Employees and Visitors
- » ADA-Compliant Elevator Access
- » Designer Kitchen with Full Stovetop
- » Immaculate Architectural Design and Craftsmanship
- » Located Directly Across from Google's Kirkland Campus
- » Minutes from Downtown Kirkland's Retail, Dining, and Waterfront Amenities
- » Excellent Transit Connectivity with Metro Route 255 Stop Across the Street
- »  Available



CAMSS Building

630 6th St S, Kirkland, WA



**Leibsohn
& Company** 



DAN KREKEL CCIM
Senior Vice President
+1 425 586 4655
dkrekel@leibsohn.com



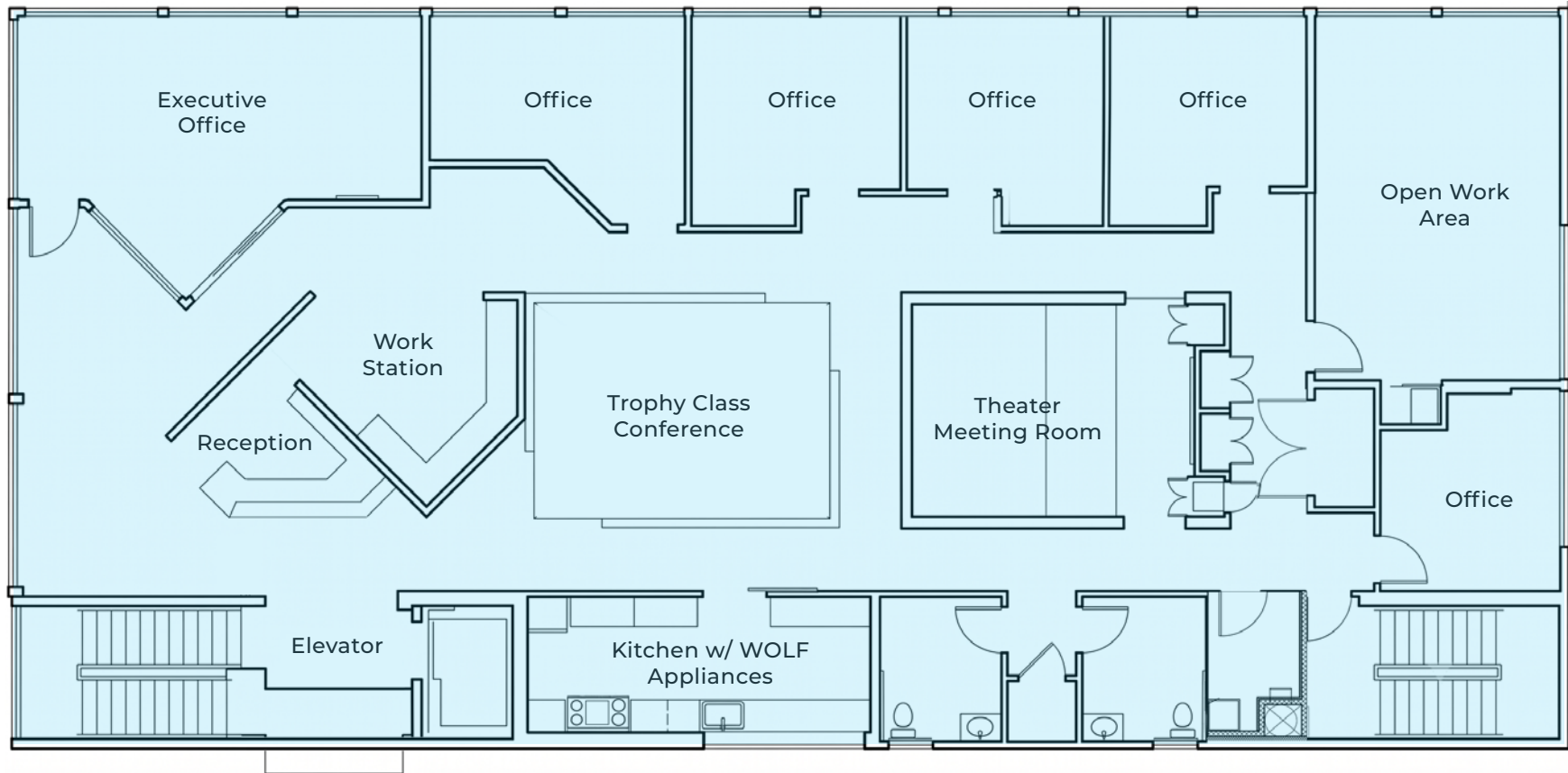
MAXTON MACLACHLAN
Associate Vice President
+1 425 586 4659
mmaclachlan@leibsohn.com

CAMSS Building

630 6th St S, Kirkland, WA

Entire Building | 4,800 RSF

- Base Rate: \$40.00/RSF, plus NNN
- 2026 NNN Rate: \$8.00/RSF
- Available Immediately



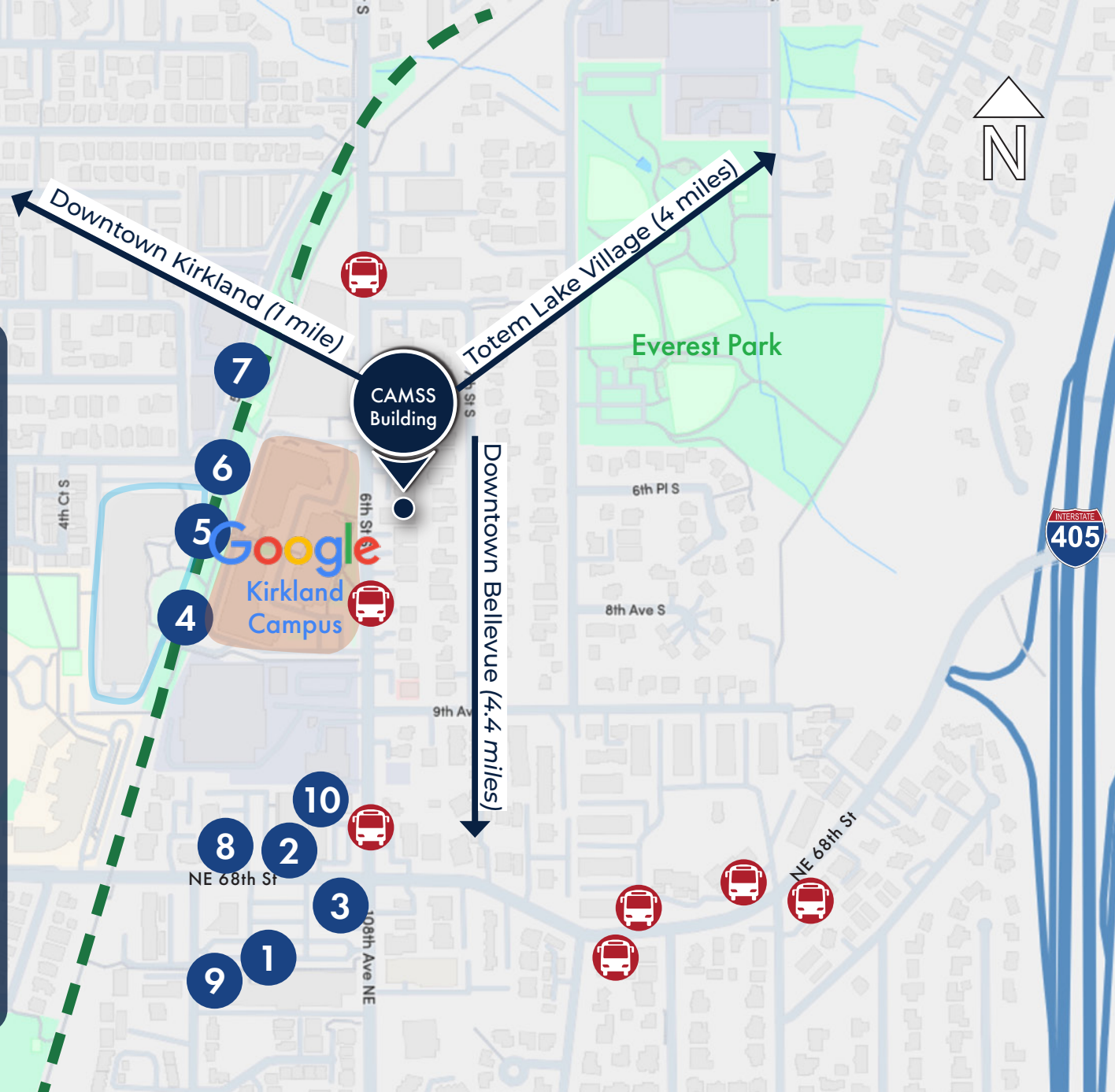
EASTRAIL



Major Bus Line Stop

NEARBY AMENITIES

1. Metropolitan Market
2. Bibi Mediterranean
3. Starbucks
4. Cross Kirkland Corridor Beach Volleyball Court
5. Cross Kirkland Corridor Beach Volleyball Court
6. Pickleball Court
7. Chainline Station Brewery
8. Kamakura Japanese Restaurant
9. Subway
10. Sarducci's Specialty Subs



CAMSS Building

630 6th St S, Kirkland, WA

Building Frontage



**Leibsohn
& Company** 



DAN KREKEL CCIM
Senior Vice President
+1 425 586 4655
dkrekel@leibsohn.com



MAXTON MACLACHLAN
Associate Vice President
+1 425 586 4659
mmaclachlan@leibsohn.com

CAMSSBuilding

630 6th St S, Kirkland, WA

Waiting Area



**Leibsohn
& Company** 



DAN KREKEL CCIM
Senior Vice President
+1 425 586 4655
dkrekel@leibsohn.com



MAXTON MACLACHLAN
Associate Vice President
+1 425 586 4659
mmaclachlan@leibsohn.com

CAMSSBuilding

630 6th St S, Kirkland, WA

Executive Office



**Leibsohn
& Company** 



DAN KREKEL CCIM
Senior Vice President
+1 425 586 4655
dkrekel@leibsohn.com



MAXTON MACLACHLAN
Associate Vice President
+1 425 586 4659
mmaclachlan@leibsohn.com

CAMSS Building

630 6th St S, Kirkland, WA

Trophy-Class Conference Room



**Leibsohn
& Company** 



DAN KREKEL CCIM
Senior Vice President
+1 425 586 4655
dkrekel@leibsohn.com



MAXTON MACLACHLAN
Associate Vice President
+1 425 586 4659
mmaclachlan@leibsohn.com

CAMSS Building

630 6th St S, Kirkland, WA

Executive Office



**Leibsohn
& Company** 



DAN KREKEL CCIM
Senior Vice President
+1 425 586 4655
dkrekel@leibsohn.com



MAXTON MACLACHLAN
Associate Vice President
+1 425 586 4659
mmaclachlan@leibsohn.com

CAMSS Building

630 6th St S, Kirkland, WA

ADA-Compliant Elevator Access



**Leibsohn
& Company** 



DAN KREKEL CCIM
Senior Vice President
+1 425 586 4655
dkrekel@leibsohn.com



MAXTON MACLACHLAN
Associate Vice President
+1 425 586 4659
mmaclachlan@leibsohn.com

CAMSS Building

630 6th St S, Kirkland, WA

Stairwell Entry



**Leibsohn
& Company** 



DAN KREKEL CCIM
Senior Vice President
+1 425 586 4655
dkrekel@leibsohn.com



MAXTON MACLACHLAN
Associate Vice President
+1 425 586 4659
mmaclachlan@leibsohn.com

CAMSSBuilding

630 6th St S, Kirkland, WA

Stairwell Entry



**Leibsohn
& Company** 



DAN KREKEL CCIM
Senior Vice President
+1 425 586 4655
dkrekel@leibsohn.com



MAXTON MACLACHLAN
Associate Vice President
+1 425 586 4659
mmaclachlan@leibsohn.com

CAMSS Building

630 6th St S, Kirkland, WA

Building Entry



**Leibsohn
& Company** 



DAN KREKEL CCIM
Senior Vice President
+1 425 586 4655
dkrekel@leibsohn.com



MAXTON MACLACHLAN
Associate Vice President
+1 425 586 4659
mmaclachlan@leibsohn.com

CAMSS Building

630 6th St S, Kirkland, WA

Theater Meeting Room



**Leibsohn
& Company** 



DAN KREKEL CCIM
Senior Vice President
+1 425 586 4655
dkrekel@leibsohn.com



MAXTON MACLACHLAN
Associate Vice President
+1 425 586 4659
mmaclachlan@leibsohn.com

CAMSS Building

630 6th St S, Kirkland, WA

Kitchen w/ WOLF Appliances



**Leibsohn
& Company** 



DAN KREKEL CCIM
Senior Vice President
+1 425 586 4655
dkrekel@leibsohn.com



MAXTON MACLACHLAN
Associate Vice President
+1 425 586 4659
mmaclachlan@leibsohn.com

CAMSS Building

630 6th St S, Kirkland, WA

Kitchen w/ WOLF Appliances



**Leibsohn
& Company** 



DAN KREKEL CCIM
Senior Vice President
+1 425 586 4655
dkrekel@leibsohn.com



MAXTON MACLACHLAN
Associate Vice President
+1 425 586 4659
mmaclachlan@leibsohn.com

A modern, two-story building with large windows and a wooden facade. The building is surrounded by lush green trees and a well-maintained lawn. A sign on the building reads "CAMSS Building" and "830".

CAMSS Building

630 6th St S, Kirkland, WA

THE INFORMATION CONTAINED HEREIN HAS BEEN RECEIVED FROM SOURCES WE DEEM RELIABLE. WHILE WE HAVE NO REASON TO DOUBT ITS ACCURACY, WE DO NOT GUARANTEE IT. YOU ARE ADVISED TO INDEPENDENTLY VERIFY ALL INFORMATION. ©Leibsohn & Company 2026

