

Steeplechase Village

# PROFESSIONAL PARK FOR LEASE

11240-11242 FM 1960 Rd, Houston, TX 77065



Anna Goodman / [anna@vp-reg.com](mailto:anna@vp-reg.com) / 713.419.8217  
Nargo Schinas / [nargo@vp-reg.com](mailto:nargo@vp-reg.com) / 832.237.5555  
[www.vp-reg.com](http://www.vp-reg.com)

  
vantagepoint  
real estate group

# PROFESSIONAL PARK FOR LEASE

11240-11242 FM 1960 Rd, Houston, TX 77065

## PROPERTY HIGHLIGHTS:

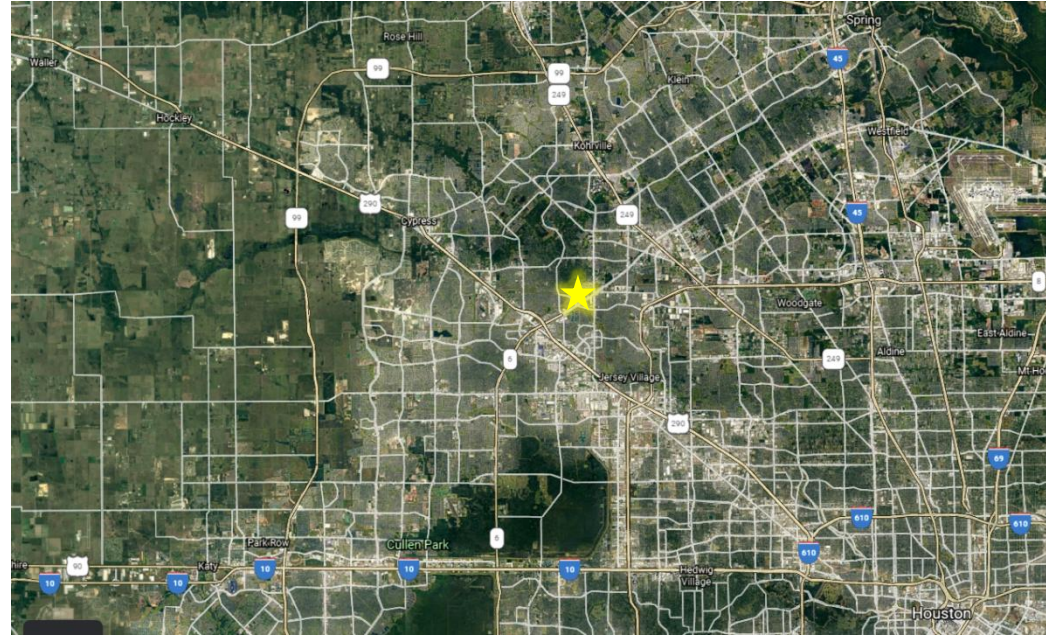
- FM 1960 Rd W Frontage
- 2 Large & Highly Visible Tenant Pylon Signs
- Outdoor Green Space With Walking Trail
- Individualized Storefront Designs Enhancing Tenant's Presence
- 4.5/1,000 Parking Ratio
- Easy Access to Hwy 290, Beltway 8, and SH 249

## FM 1960 RD WEST OF JONES TRAFFIC COUNTS:

- 59,000 (average daily traffic counts)

## AREA RETAILERS:

- Kroger
- Kohl's
- Walmart
- Ross
- Burlington
- Whataburger



## DEMOGRAPHICS:

• Population	16,180 (1 mi)	123,139 (3 mi)	229,495 (5 mi)
• Daytime Population	1,902 (1 mi)	86,190 (3 mi)	200,068 (5 mi)
• Households	4,314 (1 mi)	45,240 (3 mi)	111,172 (5 mi)
• Average HH Income	\$90,065 (1 mi)	\$81,364 (3 mi)	\$101,915 (5 mi)

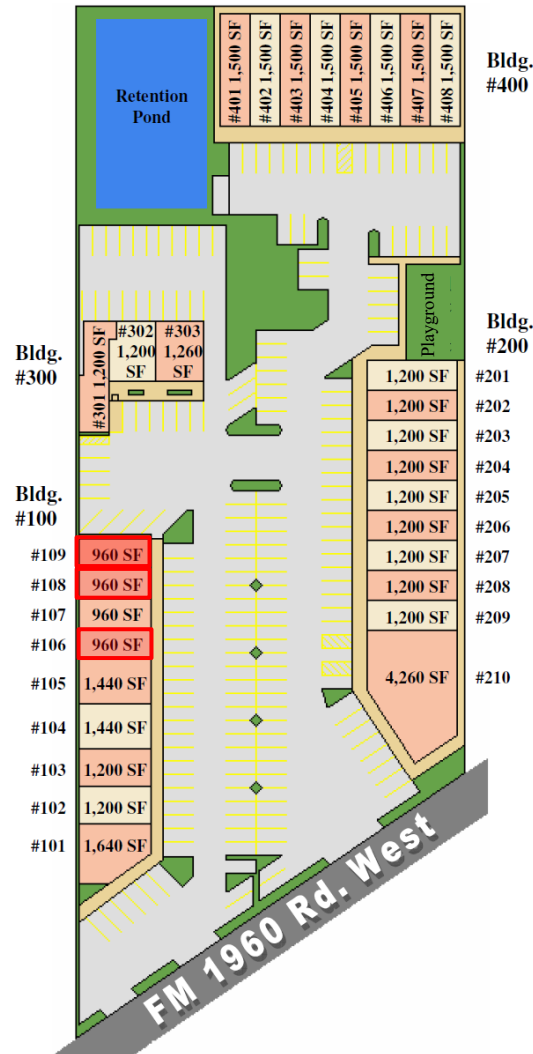
The information contained herein was obtained from sources deemed reliable; however, no guarantees, warranties or representations as to the completeness or accuracy thereof.

# PROFESSIONAL PARK FOR LEASE

11240-11242 FM 1960 Rd, Houston, TX 77065

**AVAILABLE SUITES IN RED:**

- Suite 106 – 960 SF
  - 2<sup>nd</sup> Generation space
- Suite 108 – 960 SF
  - 2<sup>nd</sup> Generation space
- Suite 109 – 960 SF
  - 2<sup>nd</sup> Generation space



**CO-TENANTS:**

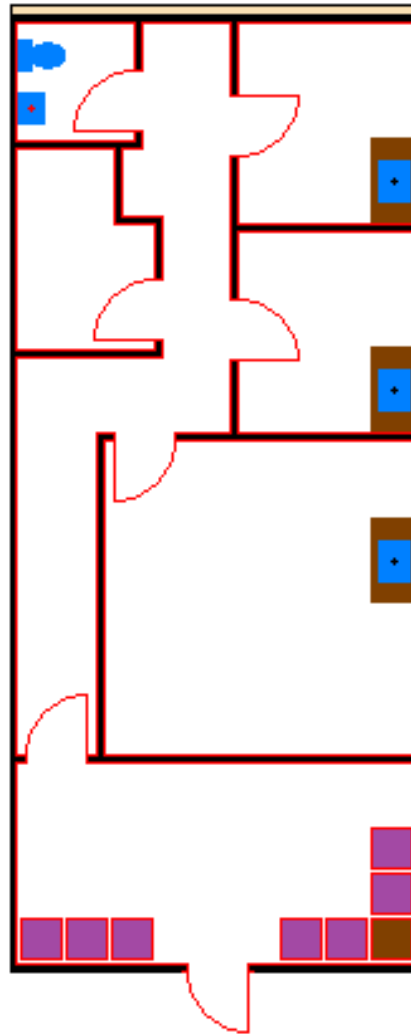
- NW Cypress Pediatrics & Family Medicine
- Star Physical Therapy
- Randstad
- Inkfree MD Laser Clinic
- Butterfly Effects ABA Therapy
- Autism 4 Kids Testing
- Leg Pain Clinic
- ABACEP Testosterone & Wellness Clinic
- Lotus Hand Acupuncture
- Pure One Infusion
- Little Explorers Lab
- Wonderbees Learning Academy
- Mila Bee Studios
- Allstate
- Lpt Realty
- Enterprise Rent-A-Car
- VantagePoint Real Estate Group

Steeplechase Village

# PROFESSIONAL PARK FOR LEASE

11240-11242 FM 1960 Rd, Houston, TX 77065

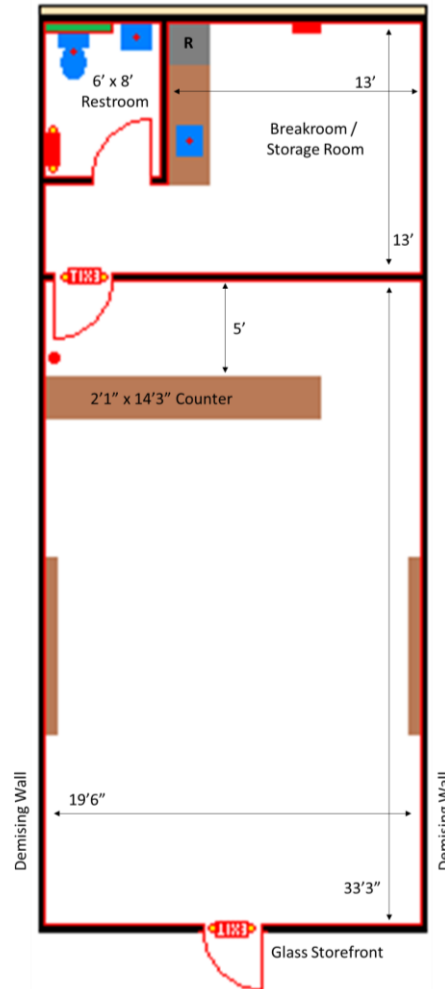
Suite 106 – 960 SF  
2<sup>nd</sup> Generation Office/Medical Space



Anna Goodman / [anna@vp-reg.com](mailto:anna@vp-reg.com) / 713.419.8217  
Nargo Schinas / [nargo@vp-reg.com](mailto:nargo@vp-reg.com) / 832.237.5555  
[www.vp-reg.com](http://www.vp-reg.com)

**vantagepoint**  
real estate group

Suite 106 – 960 SF  
2<sup>nd</sup> Generation Office

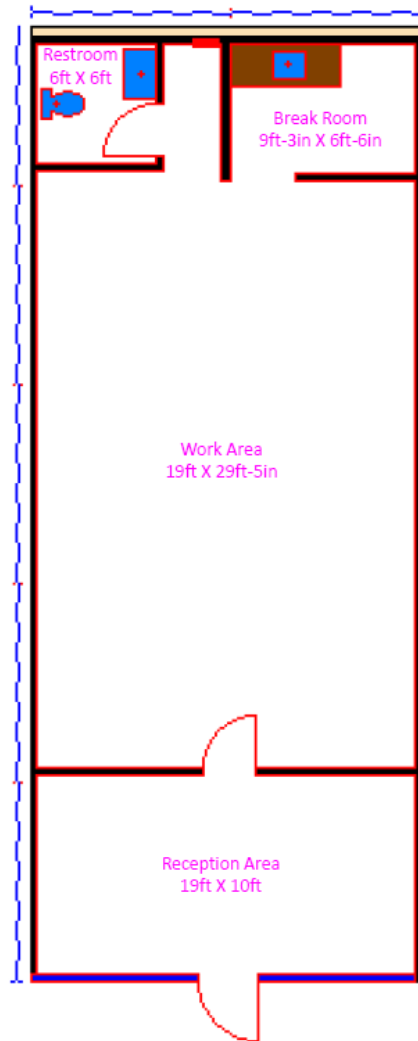


Steeplechase Village

# PROFESSIONAL PARK FOR LEASE

11240-11242 FM 1960 Rd, Houston, TX 77065

Suite 109 – 960 SF  
2<sup>nd</sup> Generation Space



Anna Goodman / [anna@vp-reg.com](mailto:anna@vp-reg.com) / 713.419.8217  
Nargo Schinas / [nargo@vp-reg.com](mailto:nargo@vp-reg.com) / 832.237.5555  
[www.vp-reg.com](http://www.vp-reg.com)

**vantagepoint**  
real estate group

Steeplechase Village

# PROFESSIONAL PARK FOR LEASE

11240-11242 FM 1960 Rd, Houston, TX 77065



Anna Goodman / [anna@vp-reg.com](mailto:anna@vp-reg.com) / 713.419.8217  
Nargo Schinas / [nargo@vp-reg.com](mailto:nargo@vp-reg.com) / 832.237.5555  
[www.vp-reg.com](http://www.vp-reg.com)

The logo for Vantagepoint Real Estate Group features the word "vantagepoint" in a bold, lowercase sans-serif font, with a red triangle above the letter "i". Below it, the words "real estate group" are written in a smaller, lowercase sans-serif font.